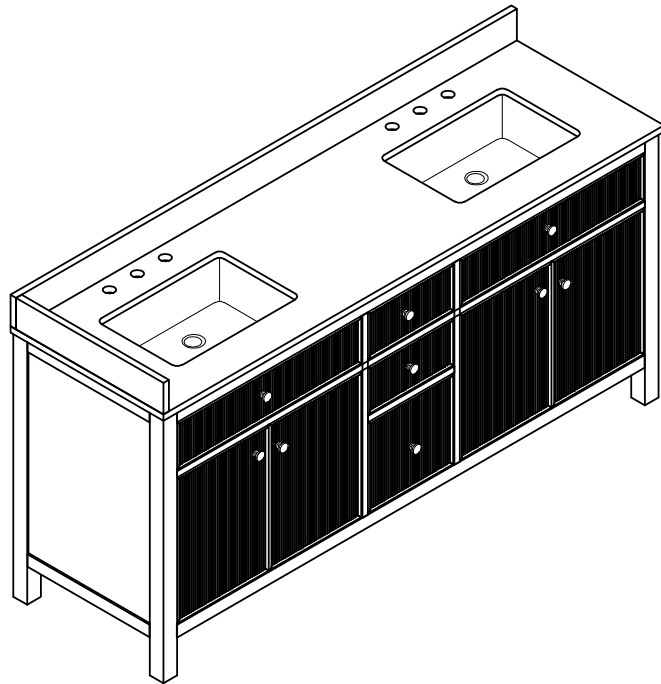


INSTALLATION INSTRUCTIONS



Model: 567072



ARE YOU INSTALLING THIS PRODUCT?

Please read the installation instructions BEFORE INSTALLATION.

If the product is not installed in accordance with these instructions, your Altair warranty may be void and the homeowner may have a claim against you (the installer).

We recommend consulting professional help if you are unfamiliar with installing bathroom vanities and/or plumbing.



IMPORTANT-It is the responsibility of the installer to make any adjustments to doors/drawers after installation if required.

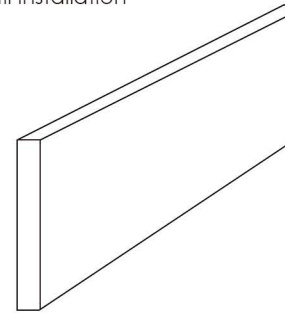
There may have been some movement in transportation and installation which causes doors/drawers to become unaligned.

PLEASE RETURN TO HOME OWNER- IMPORTANT CARE & WARRANTY INFORMATION INSIDE.

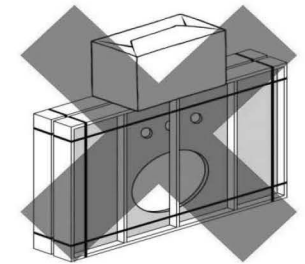
For more information visit www.altairdesignusa.com

Crate Storage and Care

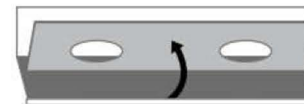
- Keep the countertop and sink in its box until installation



- Do not stack anything on top of box



- Store Crate vertically in safe location



NEVER LIFT THE VANITY TOP FLAT



NEVER CARRY THE VANITY TOP FLAT

Tools and Materials



Marker



Tape Measure



Drill



Screwdriver



Stud Finder



Level



Neutral Cure Silicone Sealant

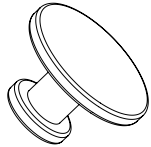


Damp Cloth

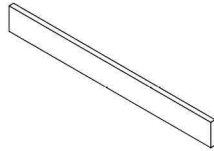


Wood Shims

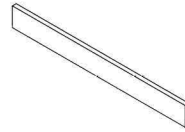
Main Body Parts



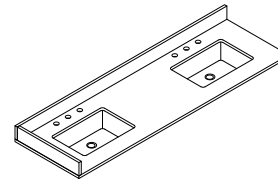
Hardware(9)



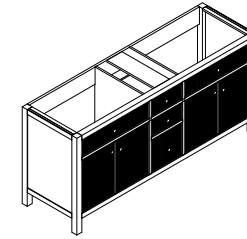
Backsplash(1)



Sidesplash(1)

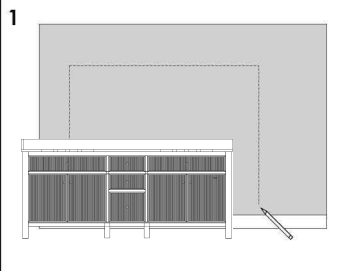


Top&Basin(1)

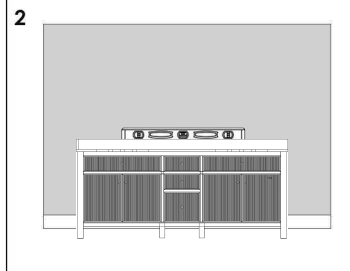


Main cabinet(1)

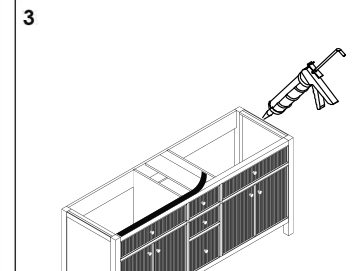
Cabinet Installation



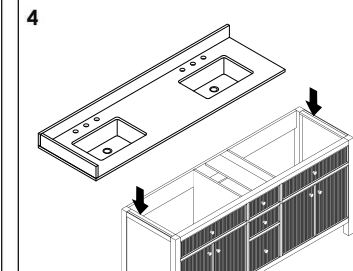
Determine location of where you would like to install your vanity.



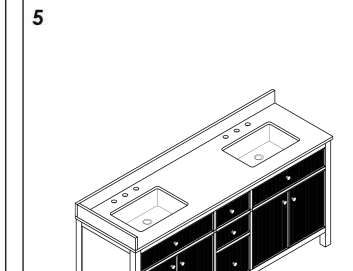
Place vanity in the installation location. Check that vanity cabinet is level.



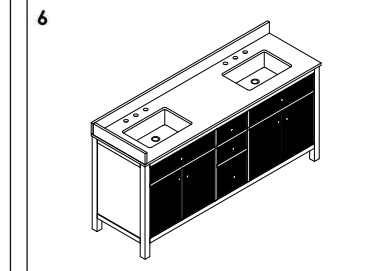
Apply a bead of adhesive silicone onto each edge of cabinet top. You can leave the EVA buffer strip or tear it off, before gluing the top.



Place ALTAR vanity top onto the cabinet, making sure vanity is seated properly.

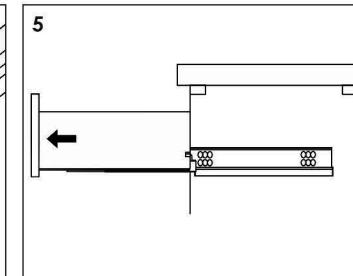
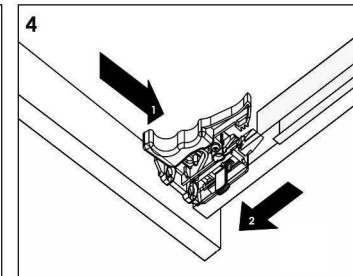
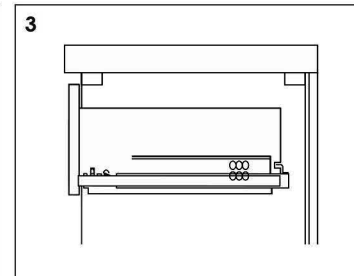
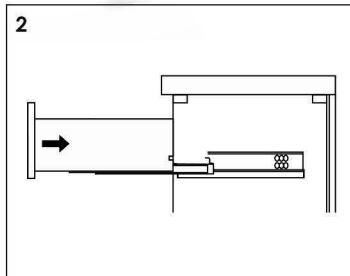
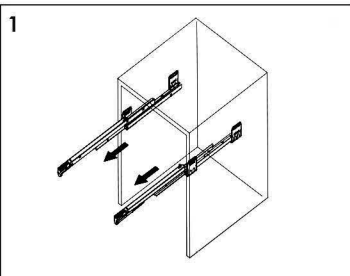


Do not use the vanity for at least 24 hours, in order to allow the glue to cure fully.



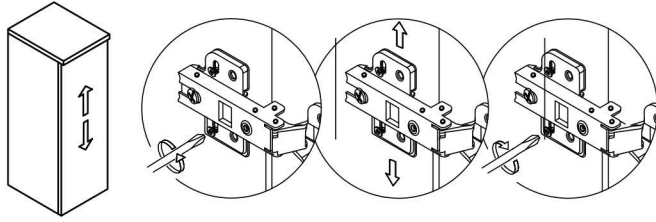
Disassemble drawer handles inside and install on drawer panel (Please disregard if the handles are installed properly).

Slider/Drawer Adjustment

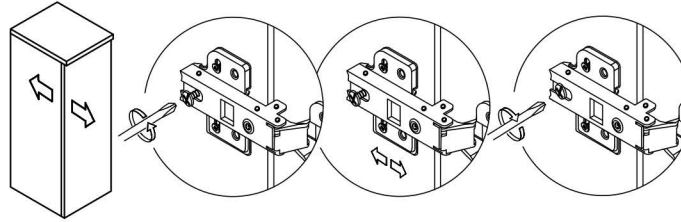


Hinge/Door Adjustment

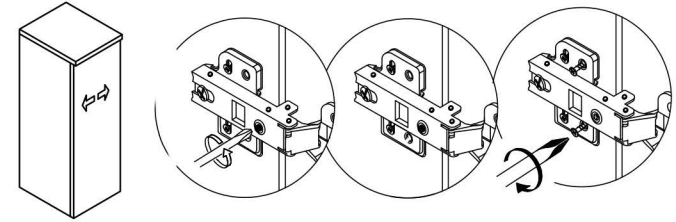
1. Up and down adjustment



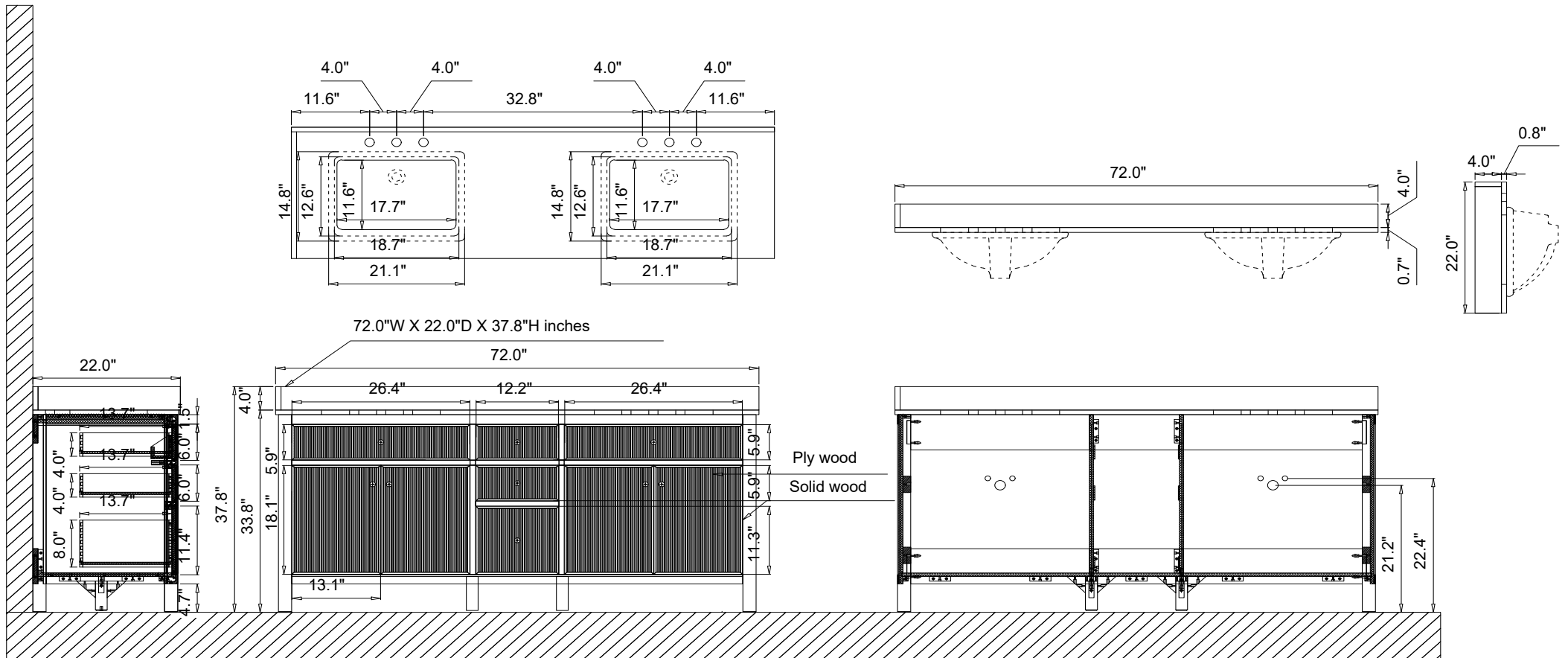
2. In and out adjustment



3. Left and right adjustment



Dimensions



Does not include faucet, drain assembly, p-frap and mirrors are only included with the purchase of the set.