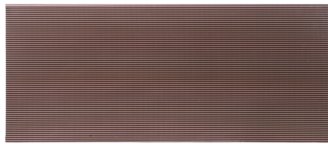


# ASSEMBLY INSTRUCTION

## Polycarbonate Window Door Awning

### Parts List and Diagram



2 pc  
A: Hollow Frosted Board



1 pc  
B: Front Metal Edging



1 pc  
C: Back Metal Edging



1 pc  
D: Connect Metal Bar



2 pcs  
E: Brackets



4 pcs  
F: Expanding Bolt



4 pcs  
G: M4 x 20



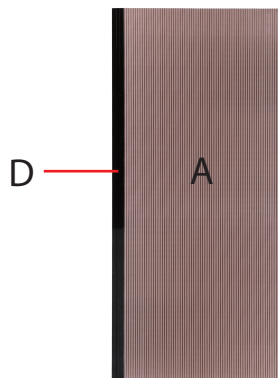
4 pcs  
H: M4 x 10

# Assemble steps

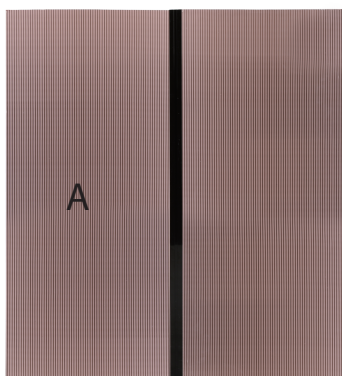
Step 1



Step 2



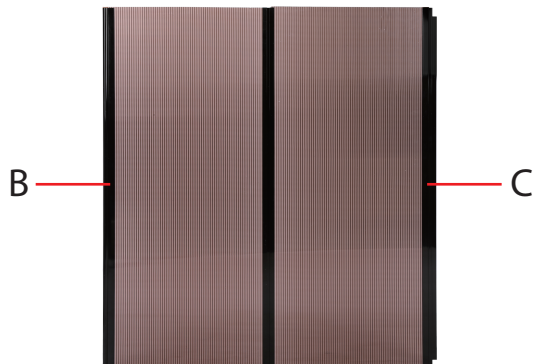
Step 3



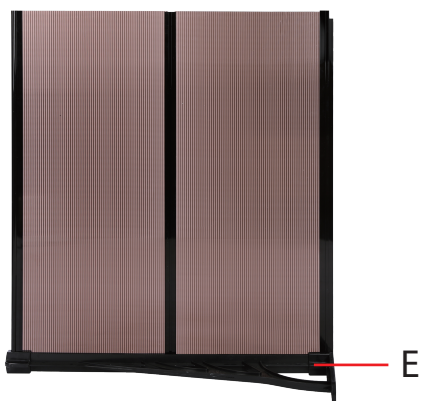


# Assemble steps

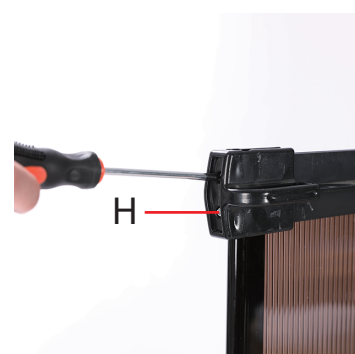
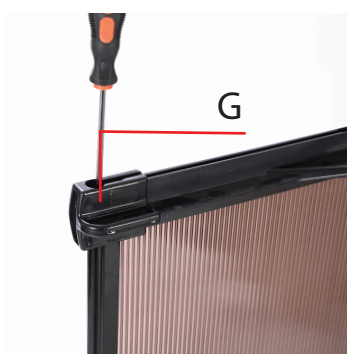
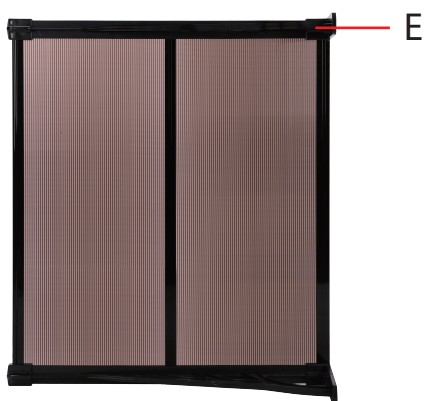
## Step 4

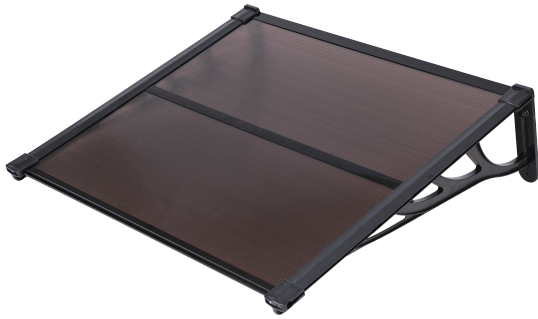


## Step 5

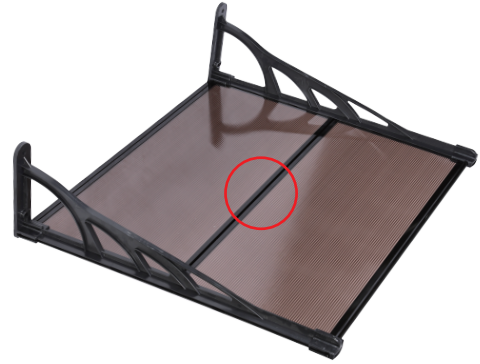


## Step 6





Front



Back Surface

**NOTE:**

To continuously improve its products, VIVOHOME reserves the right to modify this information without prior notification.

Please contact customer service via [support@vivohome.com](mailto:support@vivohome.com) with any questions, comments, or concerns. Thank you for using VIVOHOME products in your home!

**Thank You For Purchasing From  
VIVOHOME**

✉ [support@vivohome.com](mailto:support@vivohome.com)

[www.vivohome.com](http://www.vivohome.com)

MADE IN CHINA