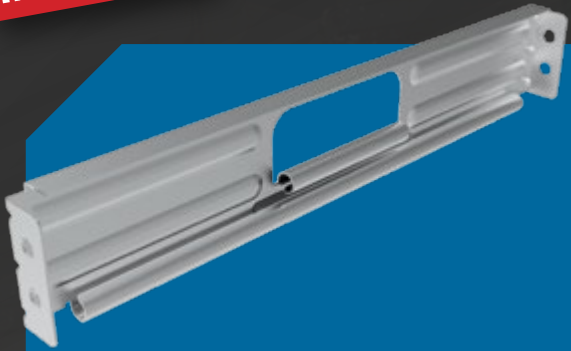


**INNOVATION**



# PLATFORM CROSSBEAM

- Evenly supports the 5/8" thick plywood and prevents it from flexing
- Galvanized steel
- Ergonomic handle cut out for comfort and easy handling

**METALTECH**®

**METALTECH**  
www.metaltech.info 1 800 363-7387

**BUILT TOUGH FOR  
SAFETY**

# PLATFORM CROSSBEAM

**SAME LOAD CAPACITY AND FULLY COMPATIBLE WITH PREVIOUS MODEL**

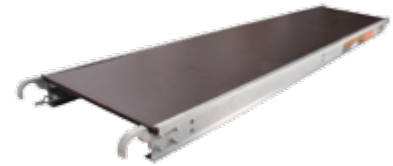
**EVENLY SUPPORTS THE 5/8" THICK PLYWOOD AND PREVENTS IT FROM FLEXING**

**BOLT ON ASSEMBLY FOR EASY REPLACEMENT**



**GALVANIZED STEEL**

**ERGONOMIC HANDLE CUT OUT FOR COMFORT AND EASY HANDLING**



DESCRIPTION	ALUMINUM PLATFORM WITH 5/8" PLYWOOD DECK			ALUMINUM PLATFORM WITH 5/8" ANTI-SLIP PLYWOOD DECK	
	7 FT	8 FT	10 FT	7 FT	10 FT
<b>DIMENSIONS</b>	7 FT X 19 IN. (2.1 M X 47.6 CM)	8 FT X 19 IN. (2.4 M X 48.3 CM)	10 FT X 19 IN. (3.1 M X 48.3 CM)	7 FT X 19 IN. (3.1 M X 48.3 CM)	10 FT X 19 IN. (3.1 M X 48.3 CM)
<b>LOAD CAPACITY</b>	75 LB/FT <sup>2</sup>	75 LB/FT <sup>2</sup>	75 LB/FT <sup>2</sup>	75 LB/FT <sup>2</sup>	75 LB/FT <sup>2</sup>
<b>WEIGHT</b>	33.2 LB (15.1 KG)	41.5 LB (18.8 KG)	46 LB (20.9 KG)	35 LB (15.9 KG)	52 LB (23.6 KG)
<b>STANDARDS</b>	ANSI, CSA AND OSHA	ANSI, CSA AND OSHA	ANSI, CSA AND OSHA	ANSI, CSA AND OSHA	ANSI, CSA AND OSHA
<b>MODEL</b>	M-MPP719	M-MPP819	M-MPP1019	M-MPP719AS	M-MPP1019AS
<b>UPC</b>	778300900077	-	778300900107	778300900015	778300900022



**WWW.METALTECH.CO**

**1 800 363-7587**