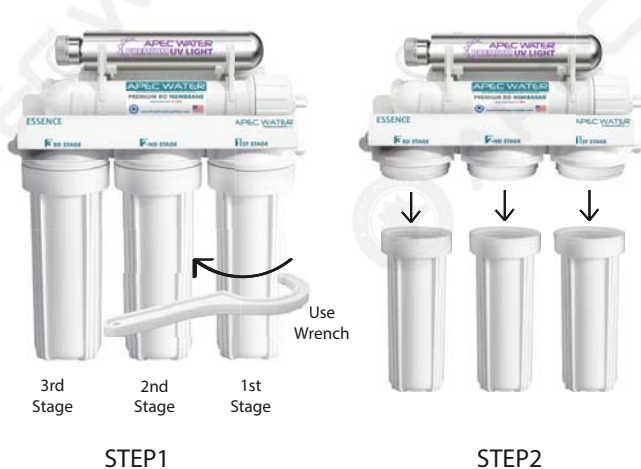


# APEC ROES-UV75-SS / ROES-PHUV75 System Filter Change Instruction

## Changing Stages 1, 2, 3 Pre-Filters: (should be changed at least every 6-12 months)

- 1) Turn OFF cold water supply to RO system by turning the needle valve stem to the right until it stops, or you can turn off the cold main water valve. Turn OFF the tank ball valve by turning the blue handle 90 degrees. Lift up RO faucet lever briefly to relieve the built-up pressure inside the RO system. This will make opening the housings easier.
- 2) Open housing: Have the RO standing upright. Slip the plastic wrench onto the #1 housing. Looking down from a top view, you should open the housing turning **clockwise**. If necessary, lay RO down on the floor to get a better leverage. If the housing is too tight, use a hammer and lightly tap on the wrench handle to help turn the wrench.
- 3) Discard 3 used filters, wash housings with mild soap, rinse off. Put 3 new filters into their respective housings: sediment filter in stage-1, Carbon block filters in stages 2 & 3.
- 4) Close up the housings. Make sure each housing has a **black O-ring** in the housing grooves. Use wrench to tighten each housing.
- 5) Remember: Turn ON the cold water supply and OPEN the tank valve after finished changing filters! Check for leaks!



After Taking the housings off, take out the dirty filters and put the new 3 pre-filters in. Remember, Stage-2 and Stage-3 are the same carbon filters.



Fig. A1

Option: Recommend to add a little bit lubricant on double o-rings.

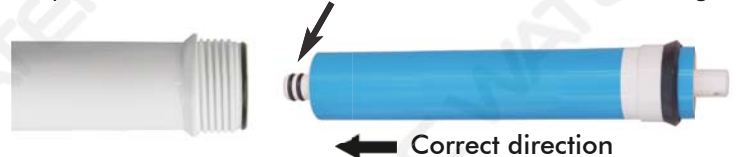


Fig. A2

## Changing Stage-4 Membrane: (should be changed every 2-3 years)

- 1) Turn OFF the cold water supply to RO system. Turn OFF the tank ball-valve by turning blue handle 90 degrees. Lift up RO faucet lever briefly to relieve the built-up pressure inside the RO system. This will make opening the housings easier.
- 2) See **Fig. C**. Locate the Membrane housing on the system (labeled "Membrane"). Remove the tubing from the housing's cap at **point D** (see Fig C). To remove tubing, Push In and Hold Down on the collet ring square against the fitting. With the collet held in this position the tube can be removed. Open up the cap (turn counter-clockwise) see **Fig. A1**. Remove the used membrane. Discard. Empty water from housing. Insert the new membrane using a pair of pliers. Push membrane into housing tightly.  
Avoid touching the Membrane with your hands to prevent contamination!
- 3) **Important!** Make sure the "double-ring" end of the membrane goes into the housing first as shown in **Fig. A2**. above. The membrane cannot filter water if it's inserted in the WRONG direction!
- 4) Close the housing cap. Reconnect the tubing to the cap by pushing it into the quick connect fitting, then gently pull back on the tubing to make sure the connection was secure. **Turn on** the cold water supply and **open** the tank valve. Let the RO system run to re-fill the tank (takes about 2-3 hours). **Check for leaks!**
- 5) Drain the first tank of water (through faucet) to flush out the new membrane! The 2<sup>nd</sup> tank of water is ready for use.

## How to Replace Stage-5 UV Bulb:

Replace the UV light bulb after 1 year of service. After 12 months, the UV bulb loses its strength. Pro-longed use after 1 year will result in less than optimal performance.

- 1) Unplug the light Transformer from the power outlet.
- 2) Do not open the UV light housing.
- 3) Remove the UV transformer cover from the UV light housing. (Fig. B1).
- 4) Remove the old UV bulb from transformer cover and install the new bulb (Fig. B2 & Fig. B3)
- 5) Insert the UV bulb all the way into the UV light housing securely and make sure the cover fully covers the UV light entry point (Fig. B5).



Fig. B1



Fig. B2



Fig. B3

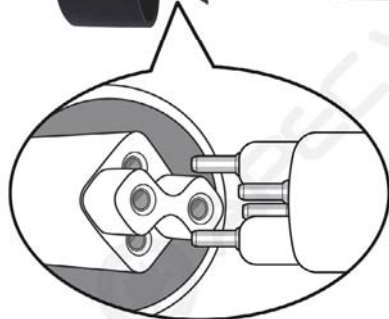
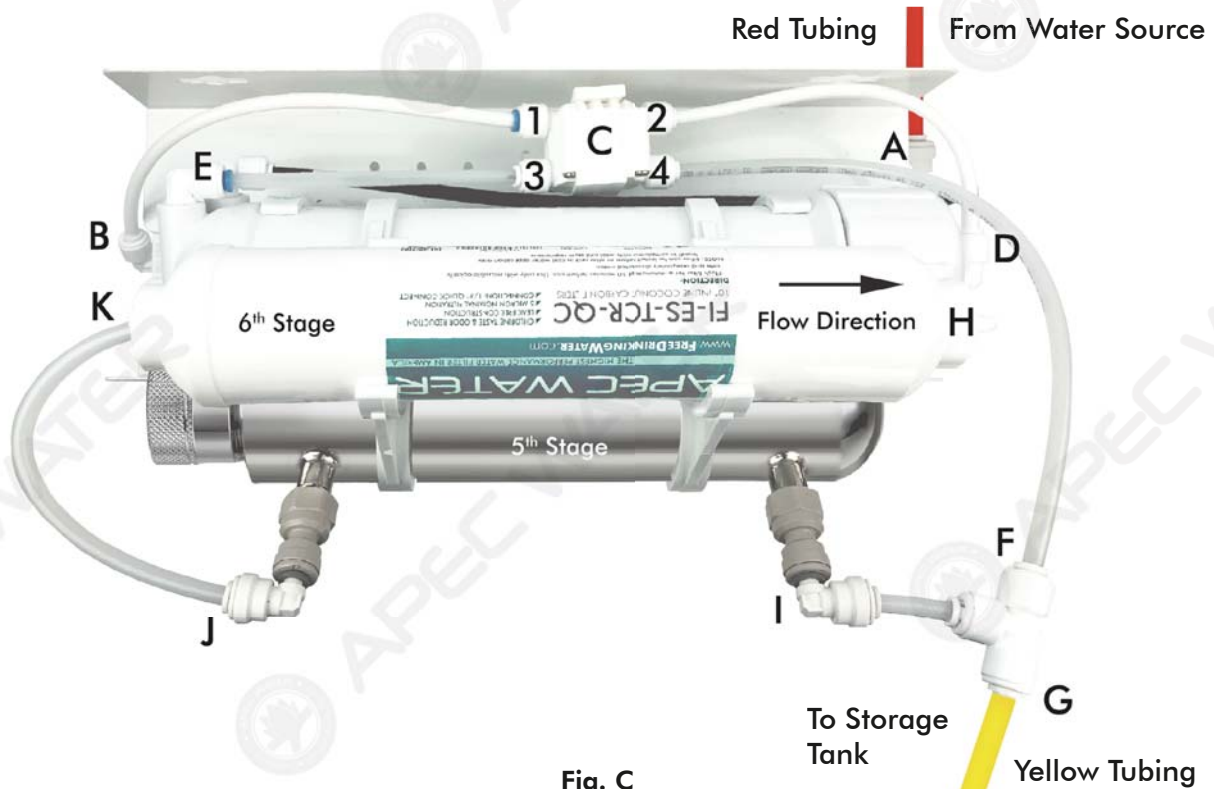


Fig. B4



Fig. B5

**Changing Stage-6 Carbon TCR Filter:** (should be changed with the membrane every 2-3 years)



- 1) Remove the OLD filter: **See Fig.C**. Disconnect the tubing from **Point K** and tubing at **Point H**. To remove tubing, Push In and Hold Down on the collet ring square against the fitting. With the collet held in this position the tube can be removed. Discard the used filter. The new 6th stage filter will come with 2 plastic end caps. Please use a flat head screwdriver to remove the caps before proceeding.
- 2) Sanitize: Use some mild bleach solution to rinse the 2 plastic fittings and the 2 ports of the new filter. This is to prevent contamination.

**NOTE:** Only this filter change needs bleach sanitizing. **Do Not** apply chlorine/bleach in any way to Membrane or it will damage the membrane!

- 3) Connect the 2 fittings and tubing to the new filter as before. Make sure the "FLOW→" on the filter is pointing to **Point H**.
- 4) **Check for leaks!**

### How to Replace Stage-7 pH Mineral Filter:

- 1) Turn OFF cold water supply to RO system. Turn OFF tank ball-valve by turning the blue handle clockwise 90 degrees. Turn ON RO faucet to relieve pressure inside the RO system. It will make removing the tubing easier.
- 2) Remove the CLEAR outlet tubing at **Point P**. See Fig. D. To remove the tubing Push In and hold down on the collet ring square against the fitting. With the collet held in this position the tube can be removed Once the outlet tubing is disconnected, please remove inlet tubing at **Point O**. Remove old filter and discard.
- 3) The new PH filter will come with 2 End Plugs. Please remove the plugs before connecting the tubing to the filter.
- 4) To reconnect the tubing to **Point O** and **Point P**, push the tubing into the Quick Connect fitting, then gently pull back on the tubing to make sure the connection was secured.
- 5) Please drain a full tank of water before use.
- 6) **Check for leaks!**

Fig. D



**NOTE:** The QC fittings come with an **End Plug that needs to be removed** before the tubing can be connected. See Fig. D.



Fig. D