

ocioc



W5

Technical specifications

Ceiling Fan Light

Model: OC52-BK-5X-W5
OC52-BG-5X-W5
OC52-WH-5X-W5
OC52-WG-5X-W5

Input: AC 120V 60Hz

Size: φ52inch+H9inch

Power: 50W (Fan: 35W, Light: 15W)



WARNING



✓ ON/OFF switch



✗ Dimmable switch

Disconnect power prior to installation, inspection, or removal
Do not touch when light is on or when it is hot
If there is any problem with the fixture, turn power off and do not attempt to repair unless you are a qualified technician
Do not expose to water or rain

Packing List



Mounting Bracket



Fan Motor Assembly



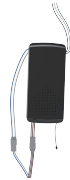
Canopy washer



Light Fixture



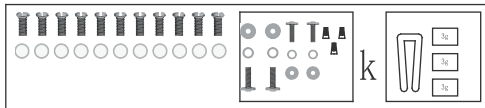
Canopy



Remote Control



Blade



Screw Pack

Installation Guide

1



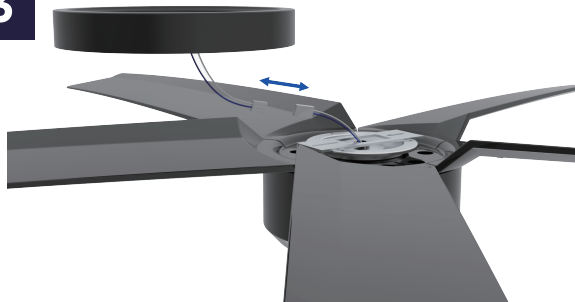
Fix the Canopy to the fan motor.

2



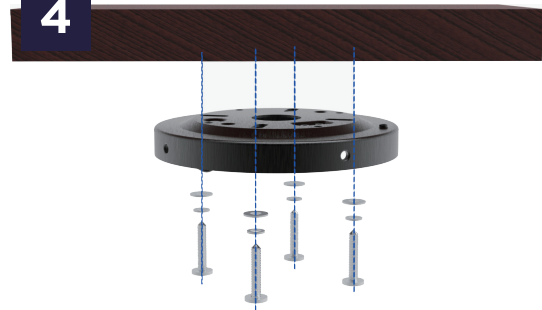
Fix the fan blades to the fan motor.

3



Connect the light fixture wires and mount to the fan.

4



Fix the Mounting Bracket to the ceiling.

5



Hang the fan onto the mounting bracket on the ceiling.

6



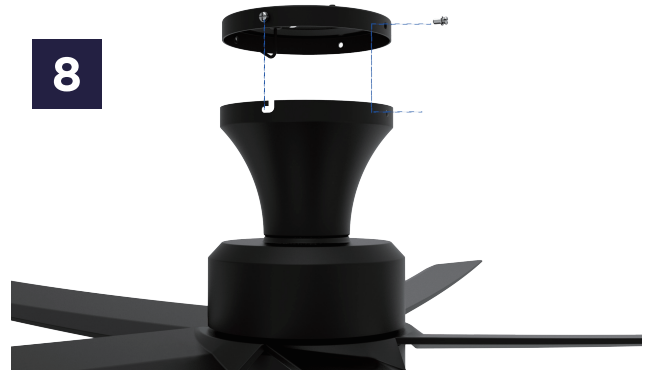
Connect the fan controller's two wire sets (one for lighting, one for fan control) to their respective matching wires on the fan.

7

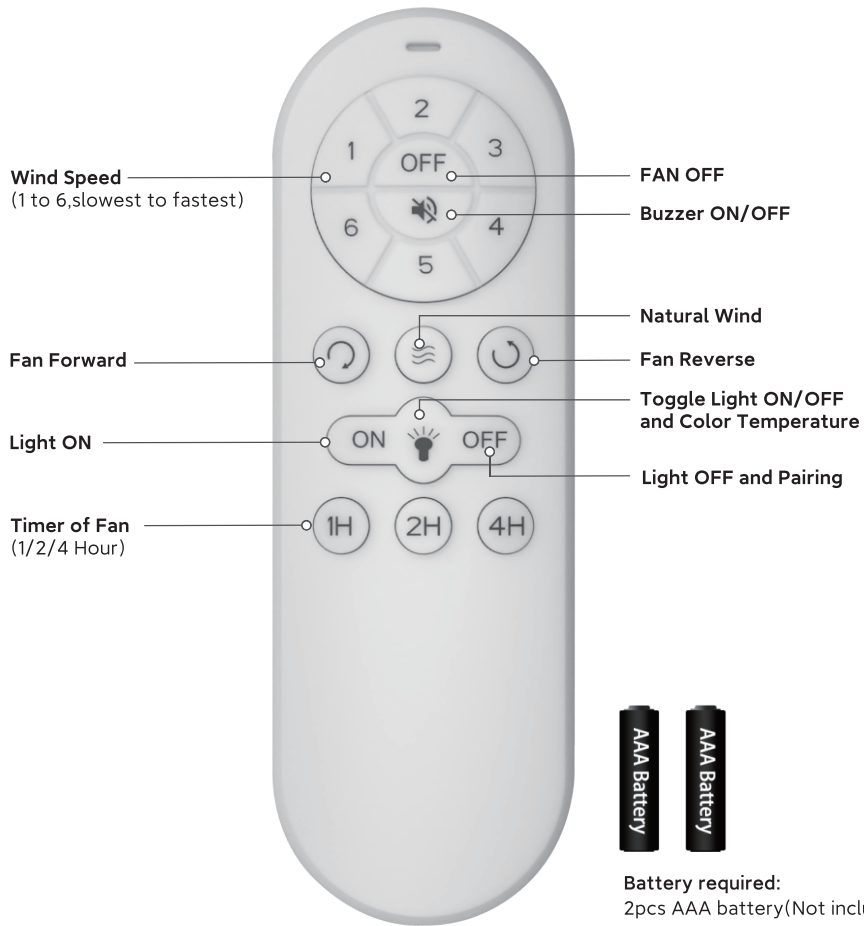


Connect the input of the controller to the ceiling power cord and place the controller horizontally inside the canopy.

8



Hang the fan onto the ceiling, secure it in place, and installation is complete.



Battery required:
2pcs AAA battery(Not included)

PAIRING METHOD:

Within the first 30 seconds of powering on the fan, press and hold the 'Light OFF' button. A successful pairing is indicated by a beep sound.

TROUBLESHOOTING GUIDE:

If you find the remote control unable to operate the fan, please follow these steps to resolve the issue:

- 1, Check the remote control's battery for proper contact, correct placement, and sufficient charge.
- 2, Re-pair the remote control with the ceiling fan .

AFTER-SALES SERVICE SUPPORT

Please feel free to contact us for the support if you have any questions or need any technical help, we will solve it for you within 24hrs.

AMAZON Channel:

STEP 1. Go to Your Orders.

STEP 2 .Find your order in the list.

STEP 3 .Select "Problem with order".

STEP 4 .Choose your topic from the list displayed.

STEP 5 .Select Contact seller.

OCIOC Service Mailbox Channel:

ociocservice@outlook.com

