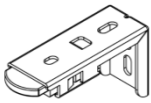


NATURAL WEAVE ROLLER SHADE

INSTALLATION INSTRUCTIONS

Step 1: Check Package Contents



- Mounting Bracket
22" - 40" = 2
46.5" = 3



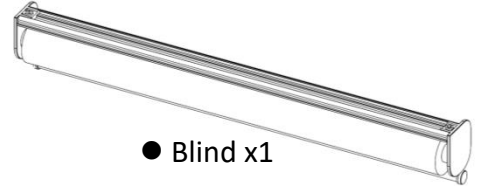
- Anchor
22" - 40" = 4
46.5" = 6



- Handle x1



- Screw
22" - 40" = 4
46.5" = 6



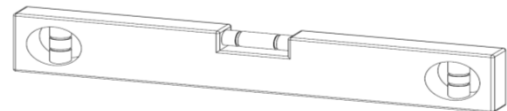
- Blind x1
-

Step 2: Measure Brackets Position

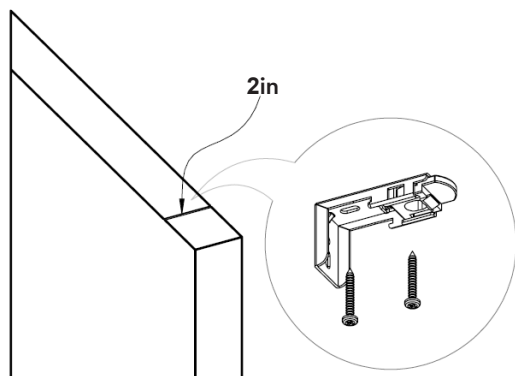
2 Mounting Brackets should be positioned 4 inches from the left and right edges of the blinds. Use a steel tape measure and a level to ensure accuracy.



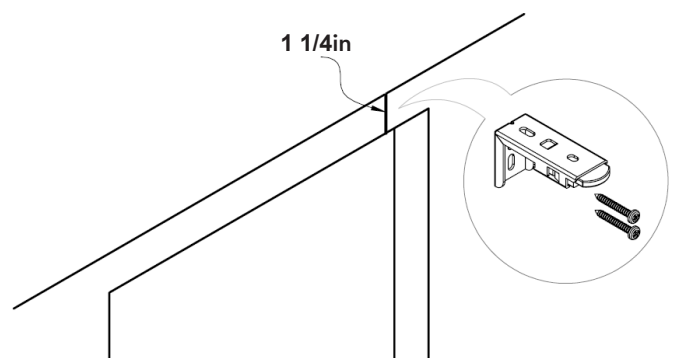
Make sure the brackets are level.



For inside mount Ceiling installed, requiring at least 2 inches space for bracket installation.
For outside mount Wall installed, requiring at least 1 1/4 inches space for bracket installation.

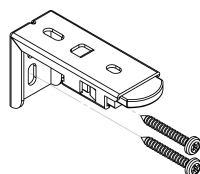


OR



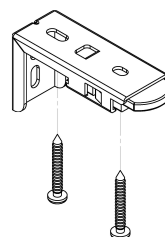
Step 3: Mount Brackets on the Wall or Ceiling

Drill 2 screws for each Mounting brackets to the wall or ceiling.



Wall Mount

OR



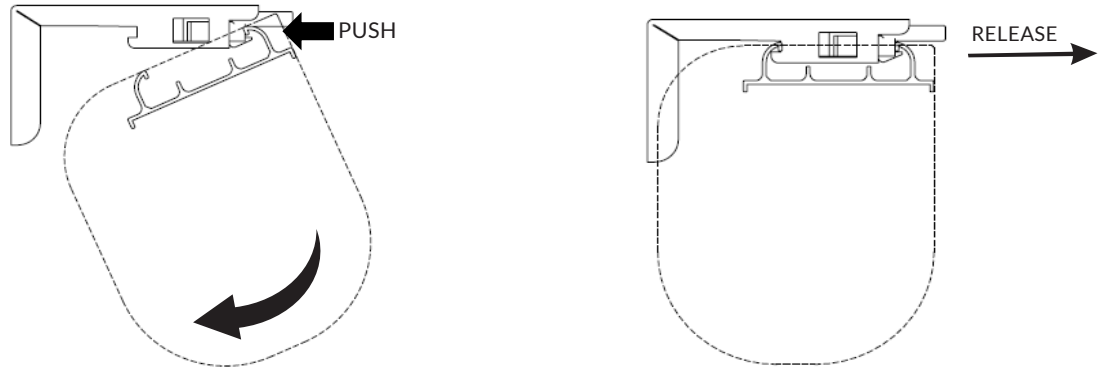
Ceiling Mount

NATURAL WEAVE ROLLER SHADE

INSTALLATION INSTRUCTIONS

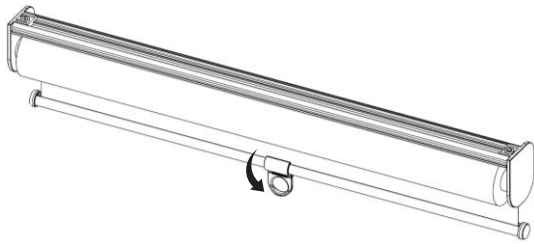
Step 4: Attach the Blind

Place the front lip of the top of the headrail into the bracket (as shown below). While holding it in place push back to hook the rear headrail up into the bracket.



Step 5: Handle assembly

Make sure the handle is completely centered.



Step 6: HOW-TO-USE

To open and close blind: Pull and tuck.

