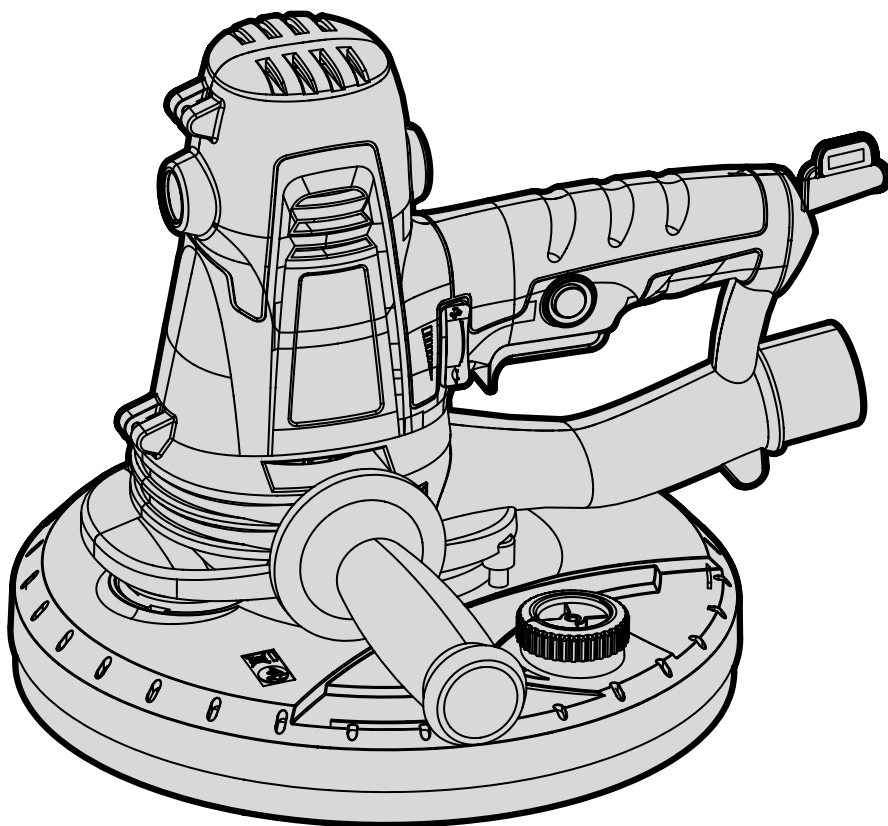




MODEL DW1085

HANDHELD DRYWALL SANDER

Instruction Manual



NEED HELP? CONTACT US!

Have product questions? Need technical support? Please feel free to contact us:



1-800-232-1195 (M-F 8AM-5PM CST)



TECHSUPPORT@WENPRODUCTS.COM

IMPORTANT: Your new tool has been engineered and manufactured to WEN's highest standards for dependability, ease of operation, and operator safety. When properly cared for, this product will supply you years of rugged, trouble-free performance. Pay close attention to the rules for safe operation, warnings, and cautions. If you use your tool properly and for its intended purpose, you will enjoy years of safe, reliable service.

For replacement parts and the most up-to-date instruction manuals, visit ***WENPRODUCTS.COM***

CONTENTS


WELCOME	3
Introduction	3
Specifications.....	3
 SAFETY	 4
General Safety Rules	4
Drywall Sander Safety Warnings.....	6
Electrical Information	8
 BEFORE OPERATING	 9
Know Your Drywall Sander	9
Assembly & Adjustments.....	10
 OPERATION & MAINTENANCE	 11
Operation	11
Maintenance.....	12
Exploded View & Parts List.....	14
Warranty Statement	16

To purchase replacement sandpaper for your tool, visit ***WENPRODUCTS.COM***

150-Grit Drywall Sandpaper, 10 Pack (Model DW150SP)
180-Grit Drywall Sandpaper, 10 Pack (Model DW180SP)
240-Grit Drywall Sandpaper, 10 Pack (Model DW240SP)
400-Grit Drywall Sandpaper, 10 Pack (Model DW400SP)
15-Foot Dust Hose (Part Number 6369-103)

INTRODUCTION

Thanks for purchasing the WEN Drywall Sander. We know you are excited to put your tool to work, but first, please take a moment to read through the manual. Safe operation of this tool requires that you read and understand this operator's manual and all the labels affixed to the tool. This manual provides information regarding potential safety concerns, as well as helpful assembly and operating instructions for your tool.

 Indicates danger, warning, or caution. The safety symbols and the explanations with them deserve your careful attention and understanding. Always follow the safety precautions to reduce the risk of fire, electric shock or personal injury. However, please note that these instructions and warnings are not substitutes for proper accident prevention measures.

NOTE: The following safety information is not meant to cover all possible conditions and situations that may occur. WEN reserves the right to change this product and specifications at any time without prior notice.

At WEN, we are continuously improving our products. If you find that your tool does not exactly match this manual, please visit **wenproducts.com** for the most up-to-date manual or contact our customer service at **1-800-232-1195**.

Keep this manual available to all users during the entire life of the tool and review it frequently to maximize safety for both yourself and others.

SPECIFICATIONS

Model Number	DW1085
Motor	AC 120V, 60 Hz, 10A
Variable Speed	1500 to 2300 RPM
Base Pad Diameter	8.5 Inches
Sanding Disc Diameter	9 Inches
Dust Port Size	Outer Diameter: 1-3/8 Inches
Dust Port Adapter Size	Outer Diameter: 1-1/2", 1-7/8", or 2-1/4"
Dust Hose Length	7.5 Feet
Power Cord Length	13.5 Feet
Product Dimensions	11-7/8 in. x 8-1/2 in. x 9-3/4 in.
Product Weight	6.6 Pounds

GENERAL SAFETY RULES

 **WARNING!** Read all safety warnings and all instructions. Failure to follow the warnings and instructions may result in electric shock, fire and/or serious injury.

Safety is a combination of common sense, staying alert and knowing how your item works. The term “power tool” in the warnings refers to your mains-operated (corded) power tool or battery-operated (cordless) power tool.

SAVE THESE SAFETY INSTRUCTIONS.

WORK AREA SAFETY

- 1. Keep work area clean and well lit.** Cluttered or dark areas invite accidents.
- 2. Do not operate power tools in explosive atmospheres, such as in the presence of flammable liquids, gases or dust.** Power tools create sparks which may ignite the dust or fumes.
- 3. Keep children and bystanders away while operating a power tool.** Distractions can cause you to lose control.

ELECTRICAL SAFETY

- 1. Power tool plugs must match the outlet. Never modify the plug in any way. Do not use any adapter plugs with earthed (grounded) power tools.** Unmodified plugs and matching outlets will reduce risk of electric shock.
- 2. Avoid body contact with earthed or grounded surfaces such as pipes, radiators, ranges and refrigerators.** There is an increased risk of electric shock if your body is earthed or grounded.
- 3. Do not expose power tools to rain or wet conditions.** Water entering a power tool will increase the risk of electric shock.
- 4. Do not abuse the cord. Never use the cord for carrying, pulling or unplugging the power tool. Keep cord away from heat, oil, sharp edges or moving parts.** Damaged or entangled cords increase the risk of electric shock.
- 5. When operating a power tool outdoors, use an extension cord suitable for outdoor use.** Use of a cord suitable for outdoor use reduces the risk of electric shock.

- 6. If operating a power tool in a damp location is unavoidable, use a ground fault circuit interrupter (GFCI) protected supply.** Use of a GFCI reduces the risk of electric shock.

PERSONAL SAFETY

- 1. Stay alert, watch what you are doing and use common sense when operating a power tool. Do not use a power tool while you are tired or under the influence of drugs, alcohol or medication.** A moment of inattention while operating power tools may result in serious personal injury.
- 2. Use personal protective equipment. Always wear eye protection.** Protective equipment such as a respiratory mask, non-skid safety shoes and hearing protection used for appropriate conditions will reduce the risk of personal injury.
- 3. Prevent unintentional starting. Ensure the switch is in the off-position before connecting to power source and/or battery pack, picking up or carrying the tool.** Carrying power tools with your finger on the switch or energizing power tools that have the switch on invites accidents.
- 4. Remove any adjusting key or wrench before turning the power tool on.** A wrench or a key left attached to a rotating part of the power tool may result in personal injury.
- 5. Do not overreach. Keep proper footing and balance at all times.** This enables better control of the power tool in unexpected situations.
- 6. Dress properly. Do not wear loose clothing or jewelry. Keep your hair and clothing away from moving parts.** Loose clothes, jewelry or long hair can be caught in moving parts.

GENERAL SAFETY RULES

 **WARNING!** Read all safety warnings and all instructions. Failure to follow the warnings and instructions may result in electric shock, fire and/or serious injury.

Safety is a combination of common sense, staying alert and knowing how your item works. The term “power tool” in the warnings refers to your mains-operated (corded) power tool or battery-operated (cordless) power tool.

SAVE THESE SAFETY INSTRUCTIONS.

7. If devices are provided for the connection of dust extraction and collection facilities, ensure these are connected and properly used. Use of dust collection can reduce dust-related hazards.

POWER TOOL USE AND CARE

1. Do not force the power tool. Use the correct power tool for your application. The correct power tool will do the job better and safer at the rate for which it was designed.

2. Do not use the power tool if the switch does not turn it on and off. Any power tool that cannot be controlled with the switch is dangerous and must be repaired.

3. Disconnect the plug from the power source and/or the battery pack from the power tool before making any adjustments, changing accessories, or storing power tools. Such preventive safety measures reduce the risk of starting the power tool accidentally.

4. Store idle power tools out of the reach of children and do not allow persons unfamiliar with the power tool or these instructions to operate the power tool. Power tools are dangerous in the hands of untrained users.

5. Maintain power tools. Check for misalignment or binding of moving parts, breakage of parts and any other condition that may affect the power tool's operation. If damaged, have the power tool repaired before use. Many accidents are caused by poorly maintained power tools.

6. Keep cutting tools sharp and clean. Properly maintained cutting tools with sharp cutting edges are less likely to bind and are easier to control.

7. Use the power tool, accessories and tool bits, etc. in accordance with these instructions, taking into account the working conditions and the work to be performed. Use of the power tool for operations different from those intended could result in a hazardous situation.

8. Use clamps to secure your workpiece to a stable surface. Holding a workpiece by hand or using your body to support it may lead to loss of control.

9. KEEP GUARDS IN PLACE and in working order.

SERVICE

1. Have your power tool serviced by a qualified repair person using only identical replacement parts. This will ensure that the safety of the power tool is maintained.


CALIFORNIA PROPOSITION 65 WARNING

Some dust created by power sanding, sawing, grinding, drilling, and other construction activities may contain chemicals, including lead, known to the State of California to cause cancer, birth defects, or other reproductive harm. Wash hands after handling. Some examples of these chemicals are:

- Lead from lead-based paints.
- Crystalline silica from bricks, cement, and other masonry products.
- Arsenic and chromium from chemically treated lumber.

Your risk from these exposures varies depending on how often you do this type of work. To reduce your exposure to these chemicals, work in a well-ventilated area with approved safety equipment such as dust masks specially designed to filter out microscopic particles.


DRYWALL SANDER SAFETY WARNINGS

 **WARNING!** Do not let comfort or familiarity with the product replace strict adherence to product safety rules. Failure to follow the safety instructions may result in serious personal injury.

DRYWALL SANDER SAFETY

1. This power tool is intended for sanding drywall for home use only. Using this tool for professional purposes will reduce the tool's lifespan and cause parts to wear down sooner. Do not force the machine to do other jobs, such as grinding, cutting off, grooming, etc. Operations for which the tool was not designed, including modification of the machine, may cause machine damage, personal injuries, and invalidate the warranty.
2. Keep bystanders and all other living creatures, including children, pets, and in-laws away from the work area.
3. Do not operate the tool in the presence of flammable liquids or gases. Do not operate the tool in wet or damp conditions; doing so significantly increases the risk of electrical shock.
4. The following personal protective equipment must be used to reduce the risk of personal injuries:
 - ANSI Z87.1-approved impact-resistant safety goggles with side shields. Safety goggles should be worn during operation, assembly or maintenance of the tool.
 - Ear protection such as plugs or muffs. Failure to use adequate ear protectors when the noise level is high can result in hearing loss and other problems, such as tinnitus (ringing, whistling or buzzing in the ear).
 - Face mask or dust mask to fight the debris produced by operation. The dust generated during may carry health risks (e.g. cancer, birth defects, asthma and/or dermatitis). Work in a well-ventilated environment and wear a dust masks specially designed to filter out microscopic particles.
 - Heavy-duty work gloves to protect your hands.
 - Safety non-slip work boots.
 - Safety helmet if any work is being carried out above your head.
5. The rated speed of the accessories must be greater than or equal to the tool's maximum speed of 2300 RPM. Do not use accessories rated at speeds below the machine's maximum RPM.
6. Do not use sanding discs larger than the recommended size of 9 inches in diameter. Incorrectly sized accessories will not get along with your sander.
7. Always hold your tool firmly with both hands to maintain control and to avoid kickback.
8. Position the power cord clear of the rotating accessory to avoid accidentally damaging the cord.
9. Do not run the power tool while carrying it at your side. Accidental contact with the rotating accessory could snag your clothing, pulling the accessory into your body.
10. Never lay the power tool down until the accessory has come to a complete stop. The rotating accessory may grab the surface and pull the sander out of your control.
11. Always turn the tool OFF and disconnect the power before making adjustments or performing maintenance.
12. Maintain the tool properly. Keep your machine's ventilation slots and dust port clean. Keep the tool and accessories clean and in good working order. Have your tool serviced by a qualified repair person using only identical replacement parts.

DRYWALL SANDER SAFETY WARNINGS

 **WARNING!** Do not let comfort or familiarity with the product replace strict adherence to product safety rules. Failure to follow the safety instructions may result in serious personal injury.

KICKBACK AND RELATED WARNINGS

Kickback is a sudden reaction to a pinched or snagged rotating wheel, backing pad, brush or any other accessory. Pinching or snagging causes rapid stalling of the rotating accessory which in turn causes the uncontrolled power tool to be forced in the direction opposite of the accessory's rotation at the point of the binding.

Kickback is the result of power tool misuse and/or incorrect operating procedures or conditions and can be avoided by taking proper precautions as given below.

1. Maintain a firm grip on the power tool and position your body and arm to allow you to resist kickback forces. Always use auxiliary handle, if provided, for maximum control over kickback or torque reaction during start-up. The operator can control torque reactions or kickback forces, if proper precautions are taken.
2. Never place your hand near the rotating accessory. The accessory may kickback over your hand.
3. Do not position your body in the area where power tool will move if kickback occurs. Kickback will propel the tool in the direction opposite to the wheel's movement at the point of snagging.
4. Use special care when working corners, sharp edges etc. Avoid bouncing and snagging the accessory. Corners, sharp edges or bouncing have a tendency to snag the rotating accessory and cause loss of control or kickback.

VIBRATION SAFETY

This tool vibrates during use. Repeated or long-term exposure to vibration may cause temporary or permanent physical injury, particularly to the hands, arms and shoulders. To reduce the risk of vibration-related injuries:

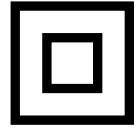
1. First be examined by a doctor and then have regular medical check-ups to ensure medical problems are not being caused or worsened from using this tool. People who are pregnant, have impaired blood circulation to the hand, past hand injuries, nervous system disorders, diabetes, or Raynaud's disease should NOT use this tool.
2. If you feel any symptoms related to vibration (such as tingling, numbness, and white or blue fingers), stop working and seek medical advice as soon as possible.
3. Wear suitable work gloves to reduce the effects of vibration.
4. Hold the tool firmly enough to keep safe control of it, but NOT too tightly. The risk associated with vibration is increased when the gripping force is high. Let the tool do the work.
5. Take vibration-free breaks during each day of work.

These safety instructions can't possibly warn of every scenario that may arise with this tool, so always make sure to stay alert and use common sense during operation.

ELECTRICAL INFORMATION

DOUBLE-INSULATED TOOLS

The tool's electrical system is double-insulated where two systems of insulation are provided. This eliminates the need for the usual three-wire grounded power cord. Double-insulated tools do not need to be grounded, nor should a means for grounding be added to the product. All exposed metal parts are isolated from the internal metal motor components with protecting insulation.



IMPORTANT: Servicing a double-insulated product requires extreme care and knowledge of the system, and should be done only by qualified service personnel using identical replacement parts. Always use original factory replacement parts when servicing.

1. Polarized Plugs. To reduce the risk of electric shock, this equipment has a polarized plug (one blade is wider than the other). This plug will fit in a polarized outlet only one way. If the plug does not fit fully in the outlet, reverse the plug. If it still does not fit, contact a qualified electrician to install a proper outlet. Do not modify the machine plug or the extension cord in any way.

2. Ground fault circuit interrupter protection (GFCI) should be provided on the circuit or outlet used for this power tool to reduce the risk of electric shock.

3. Service and repair. To avoid danger, electrical appliances must only be repaired by a qualified service technician using original replacement parts.

GUIDELINES AND RECOMMENDATIONS FOR EXTENSION CORDS

When using an extension cord, be sure to use one heavy enough to carry the current your product will draw. An undersized cord will cause a drop in line voltage, resulting in loss of power and overheating. The table below shows the correct size to be used according to cord length and ampere rating. When in doubt, use a heavier cord. The smaller the gauge number, the heavier the cord.

AMPERAGE	REQUIRED GAUGE FOR EXTENSION CORDS			
	25 ft.	50 ft.	100 ft.	150 ft.
10A	18 gauge	16 gauge	14 gauge	12 gauge

1. Examine extension cord before use. Make sure your extension cord is properly wired and in good condition. Always replace a damaged extension cord or have it repaired by a qualified person before using it.

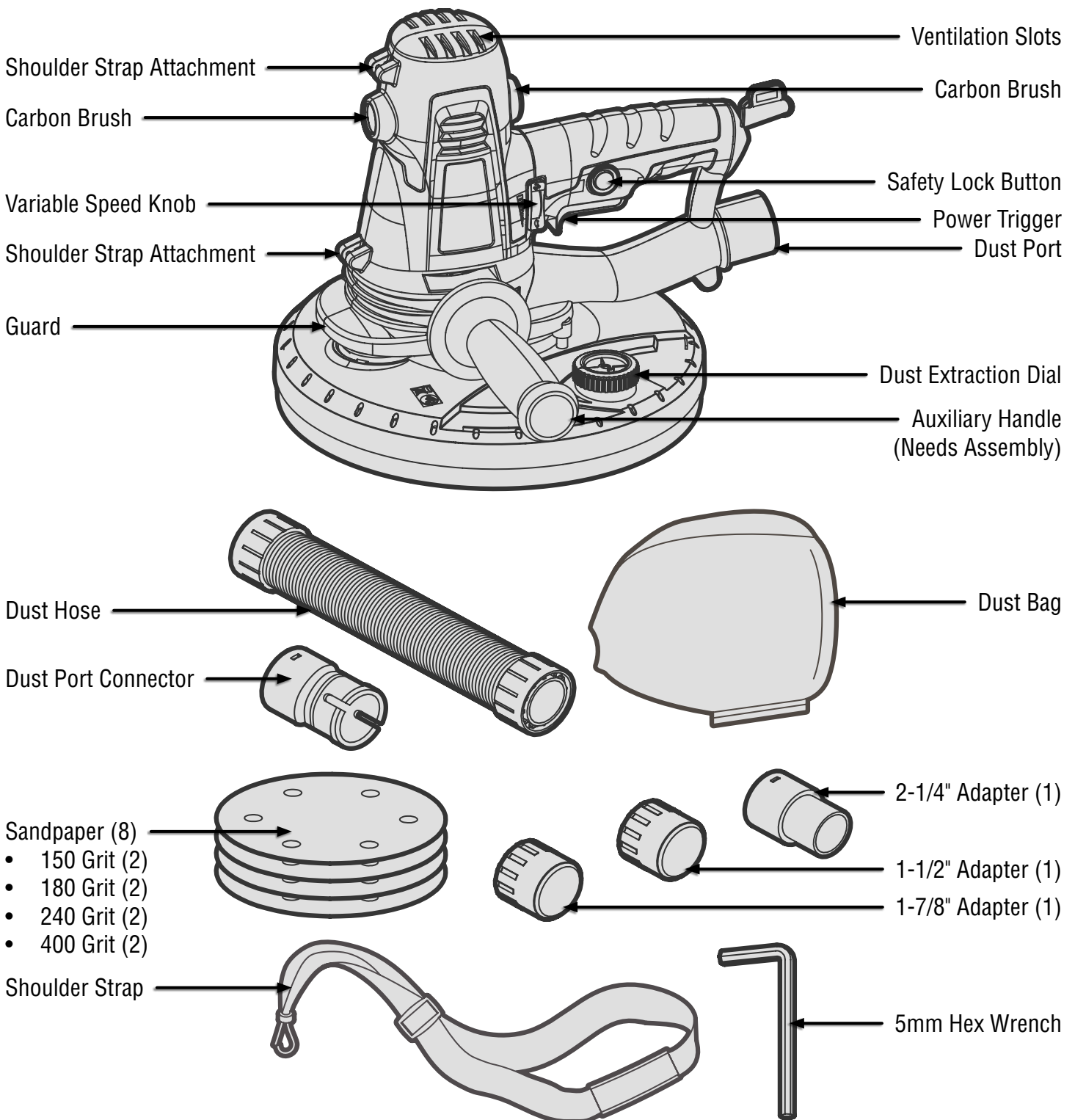
2. Do not abuse extension cord. Do not pull on cord to disconnect from receptacle; always disconnect by pulling on plug. Disconnect the extension cord from the receptacle before disconnecting the product from the extension cord. Protect your extension cords from sharp objects, excessive heat and damp/wet areas.

3. Use a separate electrical circuit for your tool. This circuit must not be less than a 12-gauge wire and should be protected with a 15A time-delayed fuse. Before connecting the motor to the power line, make sure the switch is in the OFF position and the electric current is rated the same as the current stamped on the motor nameplate. Running at a lower voltage will damage the motor.

KNOW YOUR DRYWALL SANDER

UNPACKING

With the help of a friend or trustworthy foe, such as one of your in-laws, carefully remove the drywall sander from the packaging and place it on a sturdy, flat surface. Make sure to take out all contents and accessories. Do not discard the packaging until everything is removed. Check the packing list below to make sure you have all of the parts and accessories. If any part is missing or broken, please contact customer service at **1-800-232-1195** (M-F 8-5 CST), or email techsupport@wenproducts.com.



ASSEMBLY & ADJUSTMENTS

⚠ WARNING! To prevent injury from accidental operation, make sure the tool is switched OFF and unplugged from the power source before assembling the tool or making any adjustments.

ATTACHING THE AUXILIARY HANDLE

For safe operation, the auxiliary handle must be installed. The handle can be assembled onto either side of the tool, depending on your preference. Thread the handle into the mounting hole (Fig. 1 - 1) and turn it clockwise to tighten. Make sure the handle is securely mounted.

When operating the tool, hold on to the main handle and auxiliary handle to prevent loss of control.

ATTACHING AND CHANGING SANDING DISCS

Your tool comes with 150, 180, 240 and 400 grit sanding discs for different sanding requirements.

Attach the sanding disc of your choice to the center of the hook and loop base pad. The holes in the sanding disc must align with the dust extraction hole in the base pad (Fig. 2).

Replacement sanding discs can be ordered from **wenproducts.com**.

ATTACHING THE DUST HOSE

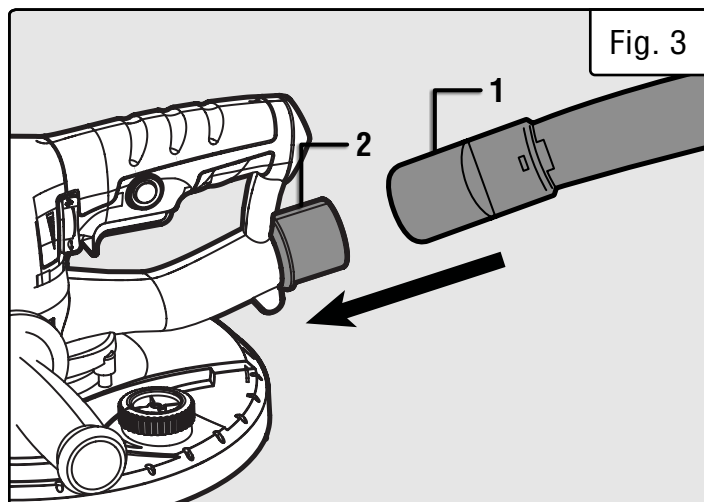
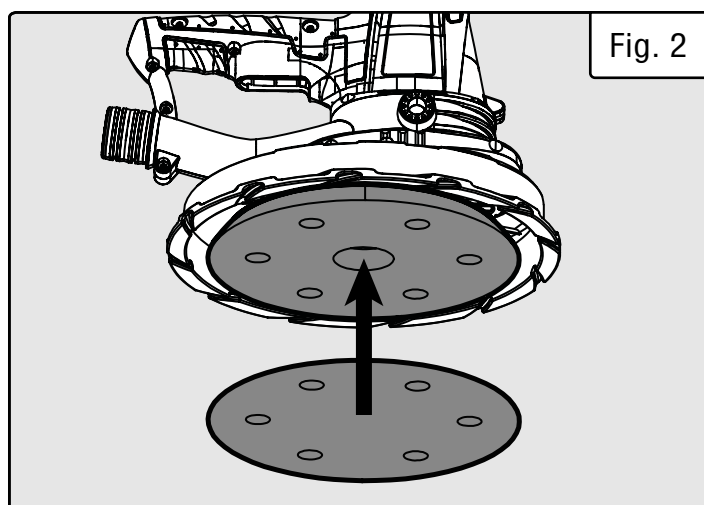
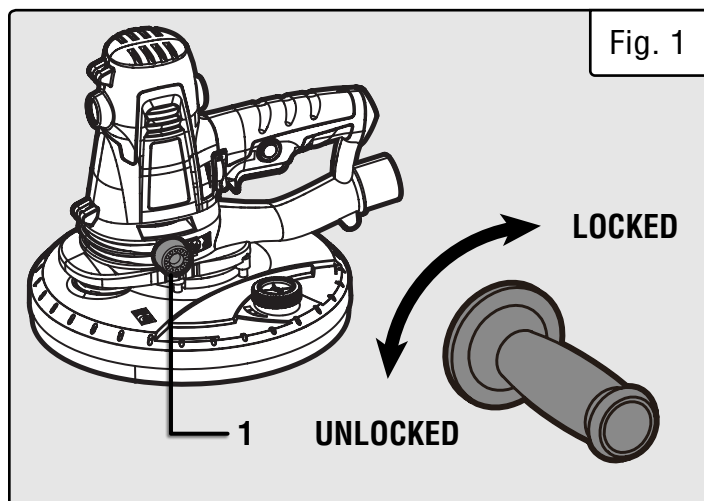
Align and insert the dust port connector (Fig. 3 - 1) all the way onto the dust port on the back of your sander (Fig. 3 - 2). The dust hose is connected to a dust bag to collect dust during sanding operations.

CONNECTING TO A DUST EXTRACTOR

Alternative to using the dust bag, you can also connect your sander to a dust extractor. Your sander comes with three sizes of adapters, a 1-7/8-inch adapter, a 1-1/4-inch adapter (located inside the 1-7/8-inch adapter), and a 2-1/4-inch adapter.

Connect the dust hose to a suitable adapter and connect it to the dust extractor of your choice.

NOTE: Your sander comes with a 7.5-foot dust hose to allow ease of use with the dust bag. If you need a longer hose, a 15-foot dust hose is available for purchase from **wenproducts.com**.



OPERATION

⚠ WARNING! To prevent serious injury, make sure all the warnings and instructions have been read and understood before operating this tool.

VARIABLE SPEED CONTROL

Use the variable speed dial (Fig. 4 - 1) to adjust the base pad's rotating speed between 1500 and 2300 RPM, depending on your task at hand. Use lower speeds for coarse sanding, or cleaning plastic and water stains from the work surface. Use higher speeds for fine sanding to achieve a smooth finish.

ADJUSTING THE DUST EXTRACTION POWER

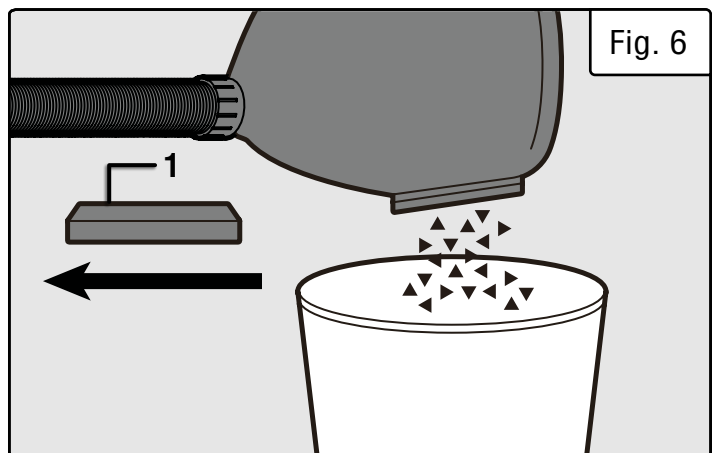
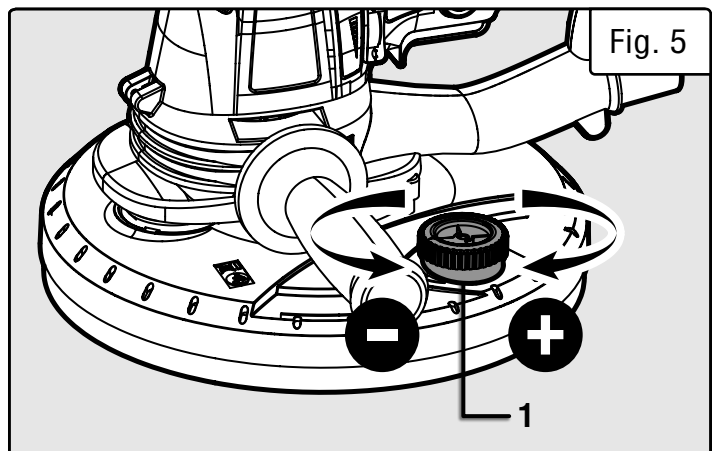
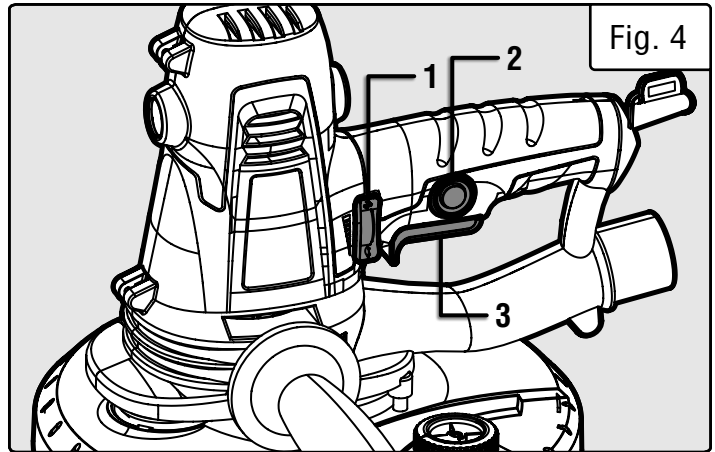
Turn the dust extraction dial (Fig. 5 - 1) clockwise to increase the suction power. Turn the dust extraction dial counterclockwise to decrease the suction power.

USING THE DRYWALL SANDER


1. Talk to your drywall and explain what's about to happen to make sure it's properly prepared.
2. Hold the sander firmly with two hands before starting. Make sure the sander is clear of the work surface to avoid kickback.
3. Press down the trigger lock button (Fig. 4 - 2), and then press the trigger (Fig. 4 - 3) to switch ON the tool. You can press down the trigger lock button again to lock the trigger ON for continuous use.
4. Let the sanding disc come to full speed before applying it onto the workpiece.
5. During sanding operation, do not press the sander too hard to avoid overloading. Use proper pressure to achieve the best results. If the machine slows or bogs down, reduce the applied pressure.
6. Once the sanding task has been completed, turn OFF the sander by releasing the trigger. If the sander has been locked ON, press down the lock button and trigger to release them, and your tool will turn OFF. Wait for the base pad to stop rotating before setting the tool down.

EMPTYING THE DUST BAG

1. We recommend emptying the dust bag after every sanding operation. Remove the dust hose with dust bag from the sander's dust port.
2. Hold the dust bag over a trash can. Remove the clasp (Fig. 6 - 1) and empty the dust bag.
3. Attach the clasp back onto the rails on the dust bag, and re-attach the dust hose and dust bag to the tool.



MAINTENANCE

 **WARNING!** To avoid accidents, make sure the power switch is in the OFF position and unplug the tool from the electrical outlet before cleaning or performing any maintenance. Servicing of the tool must be performed by a qualified technician.

GENERAL MAINTENANCE

1. Before each use, inspect the general condition of the tool. Check for:

- Loose hardware,
- Misalignment or binding of moving parts,
- Damaged cord/electrical wiring,
- Cracked or broken parts, and
- Any other condition that may affect its safe operation.

2. After every use, wipe the tool clean with a soft cloth. Make sure water does not get into the tool.

NOTE: Most plastics are susceptible to damage from various types of commercial solvents. Do not use any solvents or cleaning products that could damage the plastic parts. Some of these include but are not limited to: gasoline, carbon tetrachloride, chlorinated cleaning solvents, and household detergents that contain ammonia.

3. Keep the ventilation openings free from dust and debris to prevent the motor from overheating.

4. Store the tool in a clean and dry place away from the reach of children.

STATIC MITIGATION

Static discharge is always a problem when sanding, especially when sanding drywall, since static shocks are more frequent and stronger in dry, highly dusty environments. Using a dust collector or vacuum also contributes to static buildup. The amount of static buildup depends on the temperature, ambient humidity, type of vacuum hose being used, suction power and speed, and other factors. Your sander is designed with anti-static mitigation in mind. However, if you are still experiencing static shocks during use, the following mitigation measures may help:

- Wear rubber gloves when sanding.
- Purchase a humidifier and use that in the working area. This will increase ambient humidity and decrease the risk of shock. This is generally the best solution.
- Use increased ventilation in the working area. This will decrease dust concentration and decrease the risk of shock. However, note that using a humidifier and increased ventilation simultaneously is not necessarily a good idea, as the increased ventilation will just take any built-up humidity with it.
- Purchase and use an anti-static hose for the dust collector; these hoses are specifically designed to mitigate static buildup, but they are relatively expensive.
- Purchase and use a length of anti-static tinsel, which is available from online retailers.
- Use a length of bare wire wrapped around the dust hose and attach it to a ground point.

MAINTENANCE

⚠ WARNING! To avoid accidents, make sure the power switch is in the OFF position and unplug the tool from the electrical outlet before cleaning or performing any maintenance. Servicing of the tool must be performed by a qualified technician.

CARBON BRUSH REPLACEMENT

The wear on the carbon brushes depends on how frequently and how heavily the tool is used. If you see excessive sparks during operation or if the tool stops working, inspect the brushes and replace them.

Replacement carbon brushes (Part No. 6362-040) can be ordered from wenproducts.com. Only genuine WEN replacement brushes designed specifically for your tool should be used.

1. To inspect the brushes, open the carbon brush covers (Fig. 7 - 1) by turning them counterclockwise with a flat-head screwdriver (not included).
2. Take out and inspect the carbon brushes (Fig. 8). If the brushes are worn to under 1/8 inch in length, replace them with new carbon brushes. Both carbon brushes should be replaced at the same time.
3. Reinstall the brush caps.

PRODUCT DISPOSAL

Used power tools should not be disposed of together with household waste. This product contains electronic components that should be recycled. Please take this product to your local recycling facility for responsible disposal and to minimize its environmental impact.

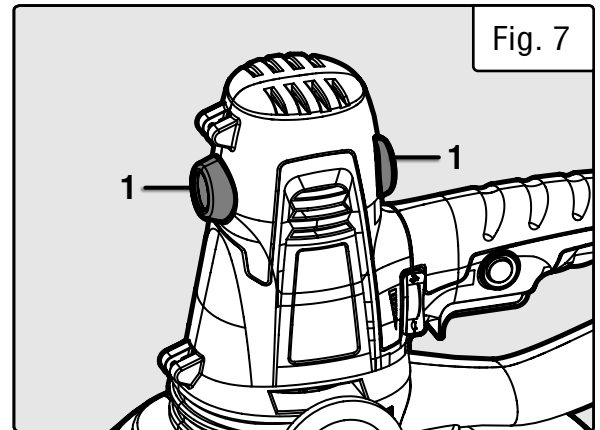


Fig. 7

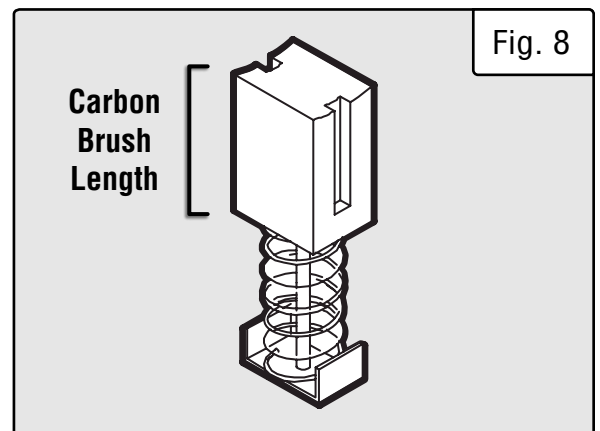
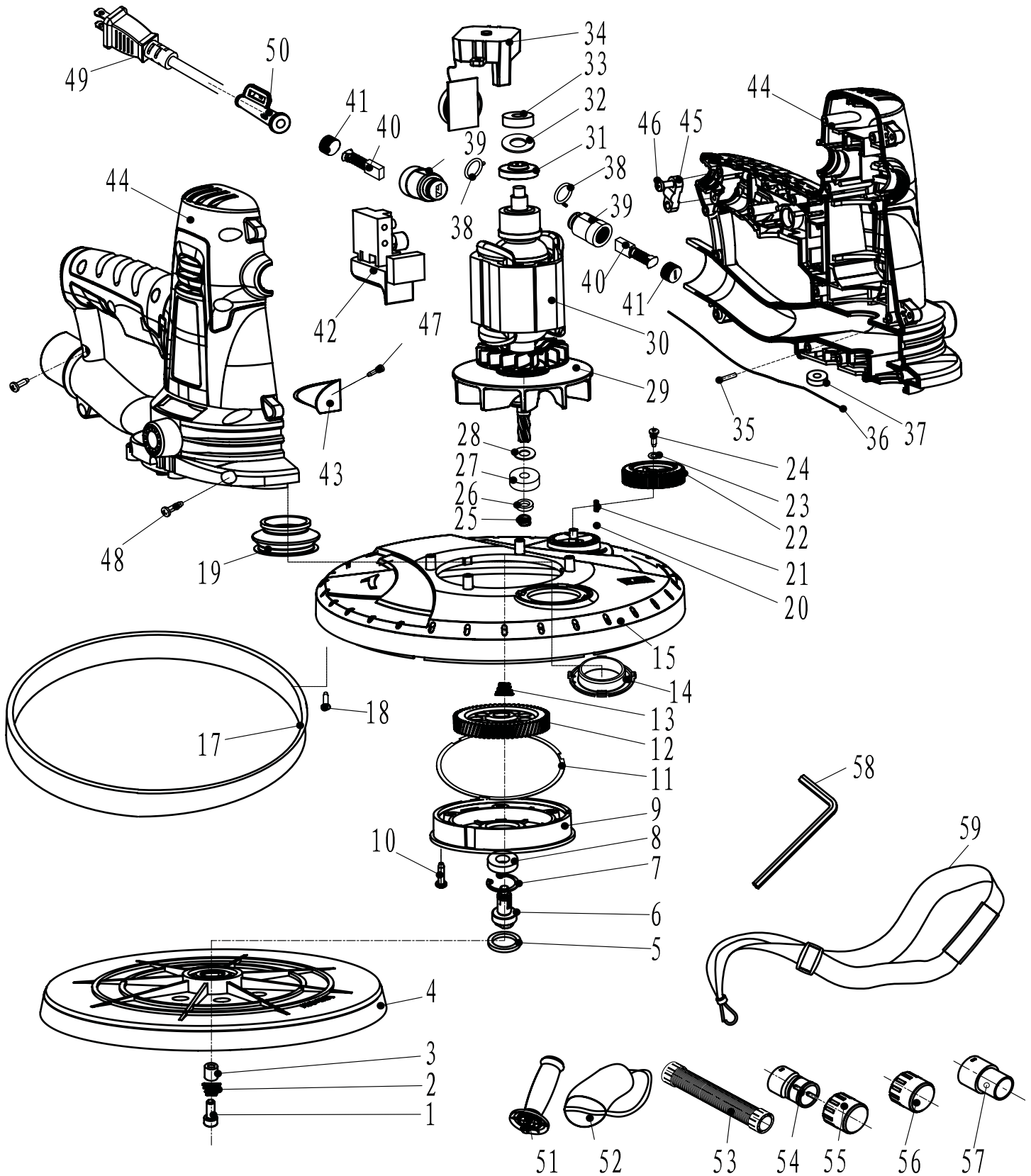


Fig. 8

EXPLODED VIEW & PARTS LIST



NOTE: Not all parts may be available for purchase. Parts and accessories that wear down over the course of normal use are not covered under the warranty.

EXPLODED VIEW & PARTS LIST

No.	Part No.	Description	Qty.	No.	Part No.	Description	Qty.
1	6362-001	Hex Screw M6x14	1	35	6362-035	Pin ϕ 3x16	1
2	6362-002	M6 Spring	1	36	6362-036	Seal Belt ϕ 1.2	1
3	6362-003	M6 Stop Button	1	37	6362-037	Bearing 606Z	1
4	DW5062-003	Sanding Pad	1	38	6362-038	Tension Spring	2
5	6362-005	Oil Seal	1	39	6362-039	Brush Holder	2
6	6362-006	Output Shaft	1	40	6362-040	Carbon Brush	2
7	6362-007	Collar ϕ 22	1	41	6362-041	Brush Holder Cover	2
8	6362-008	Bearing 6900 RS	1	42	6362-042	Switch	1
9	6362-009	End Cover	1	43	6362-043	Ventilation Board	1
10	6362-010	Screw ST3.9x16	6	44	6362-044	Housing	1
11	6362-011	Paper Washer	1	45	6362-045	Clamp Plate for Cable	1
12	6362-012	Big Gear	1	46	6362-046	Screw ST3.9x14	8
13	6362-013	Spring	1	47	6362-047	Screw ST3x10	1
14	6362-014	Clamp Plate for Disc	1	48	6362-048	Screw ST3.9x16	9
15	6362-015	Disc	1	49	6362-049	Cable	1
17	6362-017	Brush Segment	1	50	6362-050	Cable Sleeve	1
18	6362-018	Screw ST3x8	1	51	6362-051	Handle	1
19	6362-019	Waved Sleeve	1	52	6362-052	Dust Bag	1
20	6362-020	Ball ϕ 4	1	53	6362-053	Dust Tube	1
21	6362-021	Spring of Adjust Knob	1	54	6362-054	Middle Connector	3
22	6362-022	Adjust Knob	1	55	6362-055	57mm Adapter	2
23	6362-023	Flat Washer ϕ 4	1	56	6369-102	47mm Adapter	1
24	6362-024	Screw ST3.9x10	1	57	6362-057	Dust Port Connector	1
25	6362-025	Spring of Rotor	1	58	6362-058	Hex Wrench M5	1
26	6362-026	Wool Washer	1	59	6362-059	Shoulder Strap	1
27	6362-027	Bearing 608RS	1	N.P.	DW150SP	150-Grit Sanding Disc	2
28	6362-028	Flat Washer ϕ 8	1	N.P.	DW180SP	180-Grit Sanding Disc	2
29	6362-029	Rotor	1	N.P.	DW240SP	240-Grit Sanding Disc	2
30	6362-030	Stator	1	N.P.	DW400SP	400-Grit Sanding Disc	2
31	6362-031	Magnet Ring	1				
32	6362-032	Flat Washer ϕ 7	1				
33	6362-033	Bearing 607RS	1				
34	6362-034	Speed Regulator	1				

NOTE: Not all parts may be available for purchase. Parts and accessories that wear down over the course of normal use are not covered under the warranty.

WARRANTY STATEMENT

WEN Products is committed to building tools that are dependable for years. Our warranties are consistent with this commitment and our dedication to quality.

LIMITED WARRANTY OF WEN PRODUCTS FOR HOME USE

GREAT LAKES TECHNOLOGIES, LLC ("Seller") warrants to the original purchaser only, that all WEN consumer power tools will be free from defects in material or workmanship during personal use for a period of two (2) years from date of purchase or 500 hours of use; whichever comes first. Ninety days for all WEN products if the tool is used for professional or commercial use. Purchaser has 30 days from the date of purchase to report missing or damaged parts.

SELLER'S SOLE OBLIGATION AND YOUR EXCLUSIVE REMEDY under this Limited Warranty and, to the extent permitted by law, any warranty or condition implied by law, shall be the replacement of parts, without charge, which are defective in material or workmanship and which have not been subjected to misuse, alteration, careless handling, misrepair, abuse, neglect, normal wear and tear, improper maintenance, or other conditions adversely affecting the Product or the component of the Product, whether by accident or intentionally, by persons other than Seller. To make a claim under this Limited Warranty, you must make sure to keep a copy of your proof of purchase that clearly defines the Date of Purchase (month and year) and the Place of Purchase. Place of Purchase must be a direct vendor of Great Lakes Technologies, LLC. Purchasing through third party vendors, including but not limited to garage sales, pawn shops, resale shops, or any other secondhand merchant, voids the warranty included with this product. Contact techsupport@wenproducts.com or 1-800-232-1195 with the following information to make arrangements: your shipping address, phone number, serial number, required part numbers, and proof of purchase. Damaged or defective parts and products may need to be sent to WEN before the replacements can be shipped out.

Upon the confirmation of a WEN representative, your product may qualify for repairs and service work. When returning a product for warranty service, the shipping charges must be prepaid by the purchaser. The product must be shipped in its original container (or an equivalent), properly packed to withstand the hazards of shipment. The product must be fully insured with a copy of the proof of purchase enclosed. There must also be a description of the problem in order to help our repairs department diagnose and fix the issue. Repairs will be made and the product will be returned and shipped back to the purchaser at no charge for addresses within the contiguous United States.

THIS LIMITED WARRANTY DOES NOT APPLY TO ITEMS THAT WEAR OUT FROM REGULAR USAGE OVER TIME, INCLUDING BELTS, BRUSHES, BLADES, BATTERIES, ETC. ANY IMPLIED WARRANTIES SHALL BE LIMITED IN DURATION TO TWO (2) YEARS FROM DATE OF PURCHASE. SOME STATES IN THE U.S. AND SOME CANADIAN PROVINCES DO NOT ALLOW LIMITATIONS ON HOW LONG AN IMPLIED WARRANTY LASTS, SO THE ABOVE LIMITATION MAY NOT APPLY TO YOU.

IN NO EVENT SHALL SELLER BE LIABLE FOR ANY INCIDENTAL OR CONSEQUENTIAL DAMAGES (INCLUDING BUT NOT LIMITED TO LIABILITY FOR LOSS OF PROFITS) ARISING FROM THE SALE OR USE OF THIS PRODUCT. SOME STATES IN THE U.S. AND SOME CANADIAN PROVINCES DO NOT ALLOW THE EXCLUSION OR LIMITATION OF INCIDENTAL OR CONSEQUENTIAL DAMAGES, SO THE ABOVE LIMITATION OR EXCLUSION MAY NOT APPLY TO YOU.

THIS LIMITED WARRANTY GIVES YOU SPECIFIC LEGAL RIGHTS, AND YOU MAY ALSO HAVE OTHER RIGHTS WHICH VARY FROM STATE TO STATE IN THE U.S., PROVINCE TO PROVINCE IN CANADA AND FROM COUNTRY TO COUNTRY.

THIS LIMITED WARRANTY APPLIES ONLY TO ITEMS SOLD WITHIN THE UNITED STATES OF AMERICA, CANADA AND THE COMMONWEALTH OF PUERTO RICO. FOR WARRANTY COVERAGE WITHIN OTHER COUNTRIES, CONTACT THE WEN CUSTOMER SUPPORT LINE. FOR WARRANTY PARTS OR PRODUCTS REPAIRED UNDER WARRANTY SHIPPING TO ADDRESSES OUTSIDE OF THE CONTIGUOUS UNITED STATES, ADDITIONAL SHIPPING CHARGES MAY APPLY.