



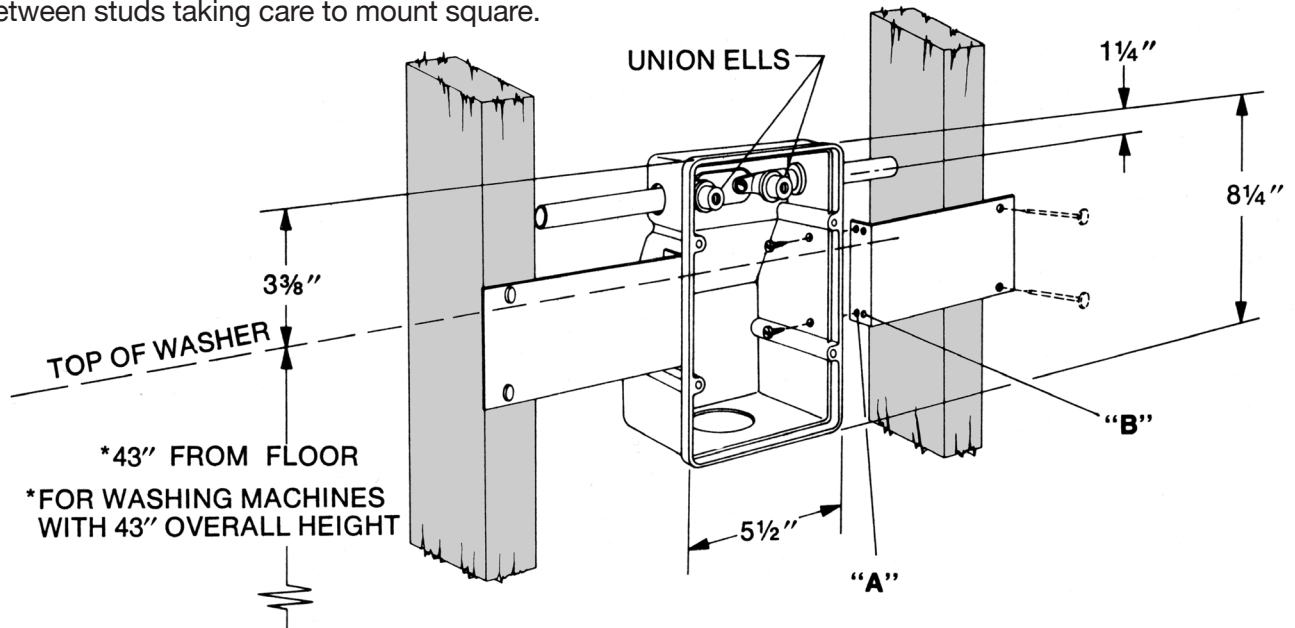
# SYMMONS<sup>®</sup> Laundry-Mate<sup>™</sup>

## in-wall washing machine supply and drain fixture

### INSTALLATION PROCEDURE:

INSTALL BETWEEN 2" x 4" STUDS ON 16" CENTERS OR OTHER  
CONSTRUCTION EQUIVALENT – ACTUAL MEASUREMENT OF STUDS 1½" X 3½"

1. Mount angle straps to box as shown with (4) ½" long pan head sheet metal screws. (Use stubby screw-driver.) **Use hole "A" for ½" thick finished wall, hole "B" for ¾" thick finished wall.** Mount assembly between studs taking care to mount square.



2. Sweat 5" length of ½" copper tubing (not provided) into union ells. (When stops are used, use 3½" length of copper tubing and sweat into female end of stop-sweat male end of stop into union ells.) Slide rubber washers (not required when stops are used) onto copper tubing and mount thru sides of box and secure elbows to box with ¾" long pan head self tapping screws. Slide rubber washers against inside of box. Connect supplies from above or below, hot on left, cold on right. **DO NOT SWEAT SOLDER CONNECTIONS CLOSE TO BOX.**

3. Mount valve handle onto valve and mount valve to union ells with gaskets and screws provided.

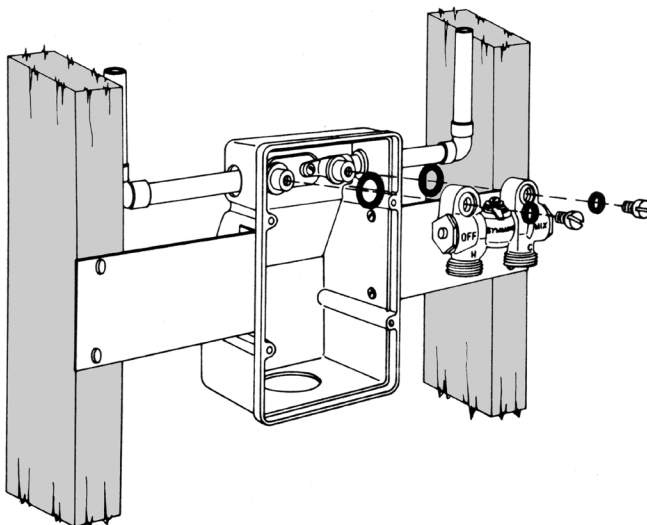
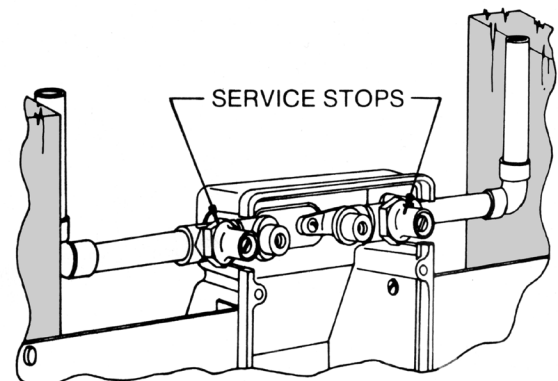
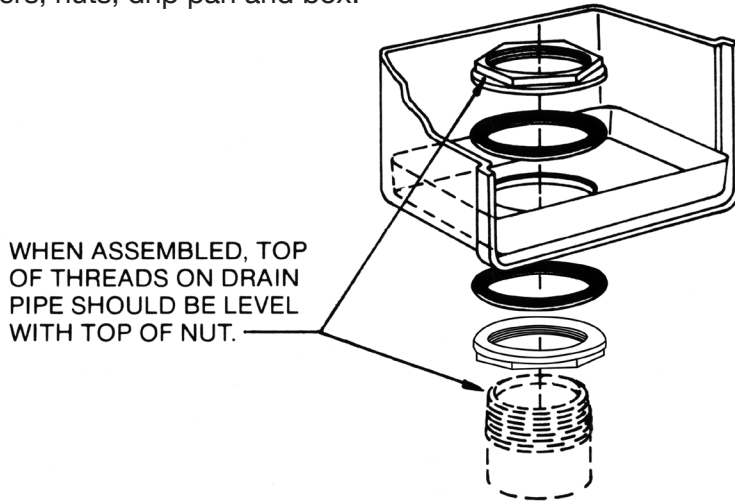


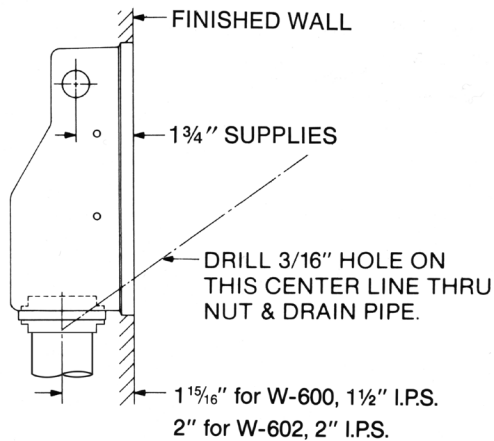
Illustration of slotted box with  
service stops installed.



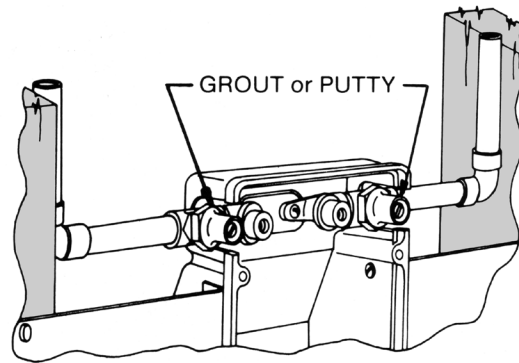
4. Install first nut and gasket on to pipe or tubing as low as possible. Place overflow tray in bottom of box over pipe or tubing and secure with second gasket and nut. Thread first nut and gasket up against box from below so as to secure box between two nuts. Be sure seal is made between all washers, nuts, drip pan and box.



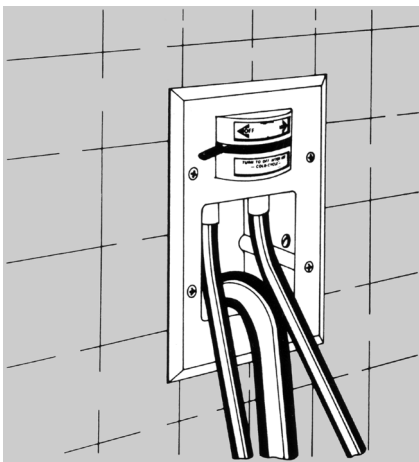
- 4A. Complete finish wall—front edge of box must be flush with finish wall.



- 4B. When service stops are used, fill area around stops and slots in box with grout or putty.



5. Slide cover back onto washing machine hoses and screw hoses onto valve. Mount cover to box with (4) 1" long oval head self tapping screws. Put knob on handle. Place drain hose into drain outlet.



#### Limited Warranty

Symmons Industries, Inc. warrants to the original user of this product that for a period of five years from the date of installation of the product, any defective product will be exchanged or reconditioned (at our option) free of charge. Return the defective product (prepaid) to Symmons Industries, Inc., 31 Brooks Drive, Braintree, Massachusetts 02184.

There are no other express warranties on this product and ALL WARRANTIES OF MERCHANTABILITY AND WARRANTIES AS TO FITNESS FOR A PARTICULAR PURPOSE AND ANY OTHER IMPLIED WARRANTIES ARE LIMITED TO A PERIOD OF FIVE YEARS AFTER INSTALLATION. SYMMONS INDUSTRIES, INC. EXPRESSLY DISCLAIMS CONTINGENT LIABILITY AND CONSEQUENTIAL DAMAGE OF EVERY KIND WHATSOEVER. Some states do not allow limitations on how long an implied warranty lasts or an exclusion may not apply to you. This warranty gives you specific legal rights, and you may also have other rights which vary from state to state. Modification, alteration, improper installation or use of repair parts other than genuine Symmons parts will void the warranty on this product.