



Diamond Hole Saw

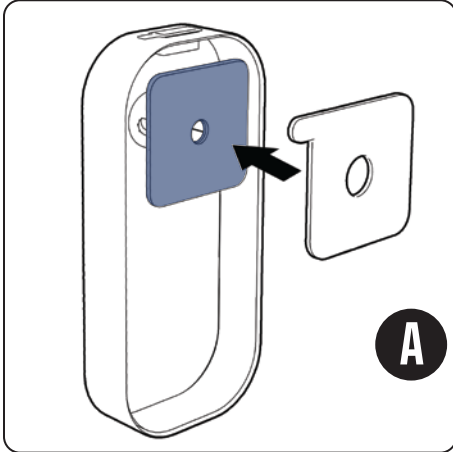
10571 / 10572



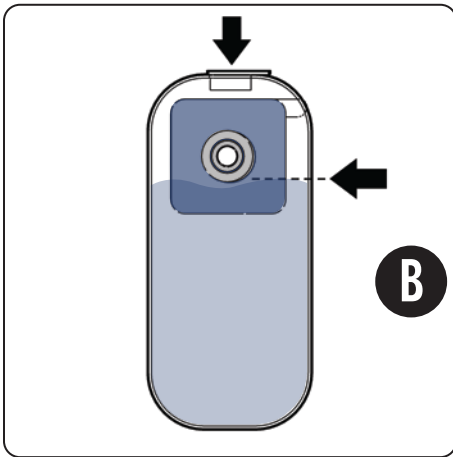
Blister card packaging

Use the QEP® Diamond Hole Saw Kits to drill holes when installing bathroom fixtures on various tile surfaces including the hardest porcelain, ceramic, marble and granite. These drills feature a metal saw with diamond grit edge for long lasting use, limited wear, faster cuts, less dust and less chipping. In addition to the hole saw, each kit contains adhesive pads, a water cooling system and drill guide. This hole saw must be used with the water system to keep it from overheating and must be used with a cordless drill.

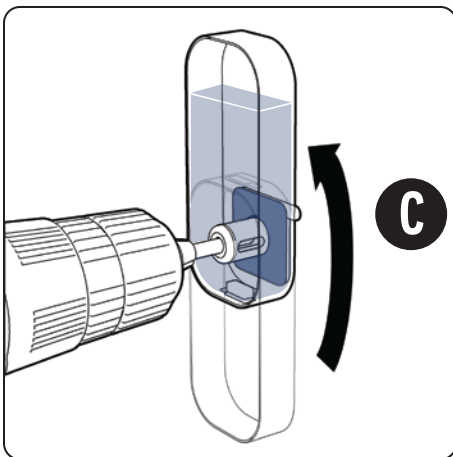
How To Use



1. Mark where the hole is to be drilled.
2. Be sure that the blue Drill Guide is flush to the Water Reservoir.
3. Peel paper from one side of Mounting Tape and attach to the surface of the blue Drill Guide, centering the hole around the lip. Press firmly. **(A)**



4. Remove cap on Water Reservoir and fill with water to bottom edge of the Drill Guide. Reattach cap firmly. **(B)**
5. Remove remaining paper from Mounting Tape. With Water Reservoir cap facing up, align the mark on the wall to the center of the Drill Guide. Press firmly to adhere.



6. Insert Drill Bit into Drill Guide. Rotate Water Reservoir 180 degrees and drill the hole. **(C)**