

Assembly Instructions

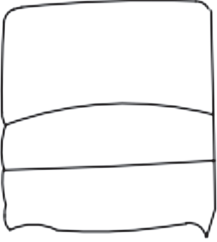


Recliner–R9878

Your recliner comes packaged in one box. Carefully remove all of The components from the packaging and set aside for assembly.

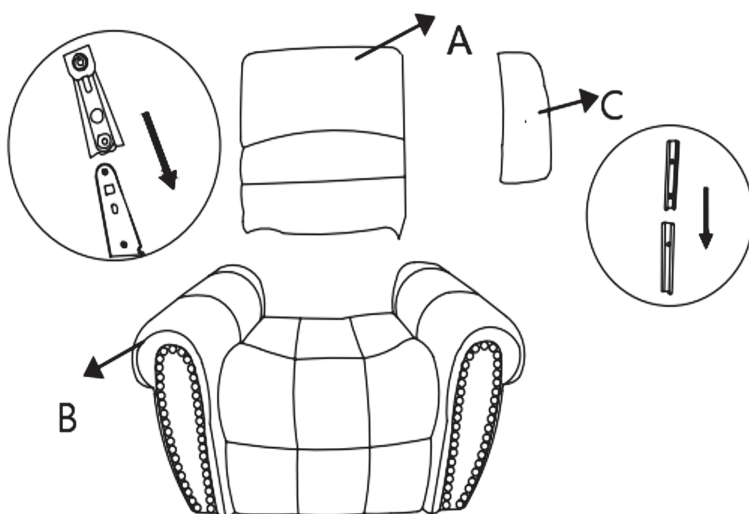
CAUTION:

DO NOT use any sharp objects to open plastic wrapped components as damage to product or components may result.

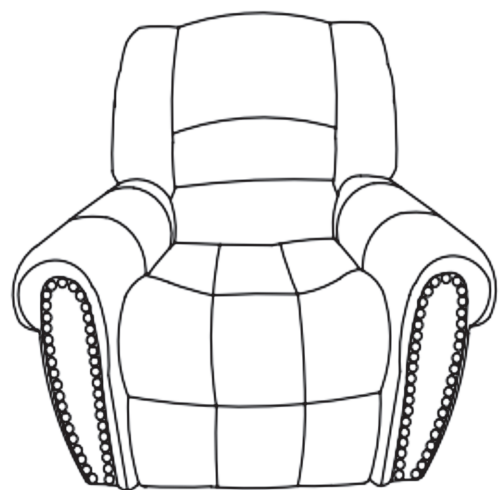
Package Contents

		
A 1xSeat Back	B 1xSeat	C 2xEars

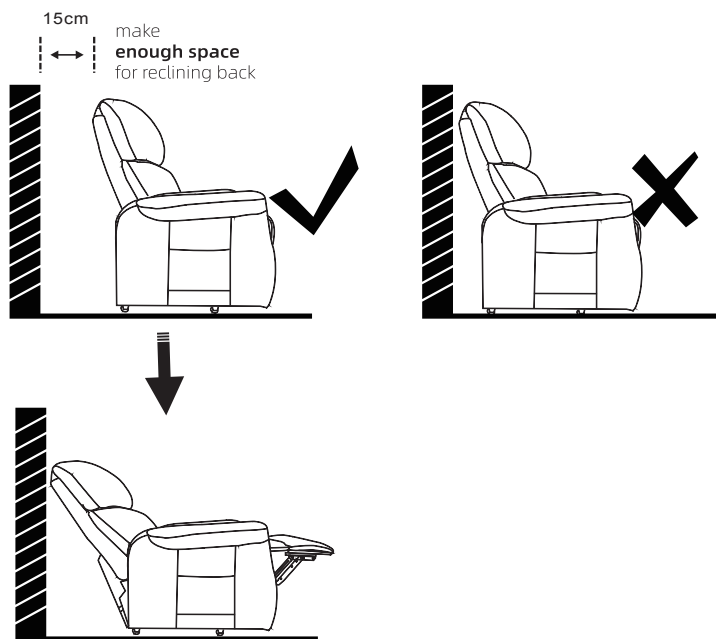
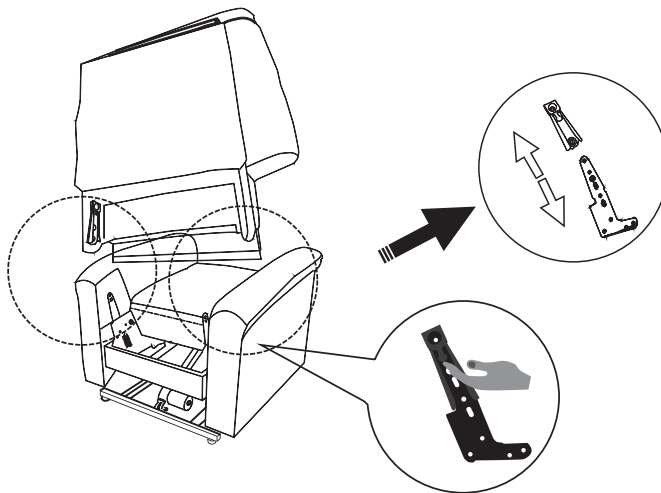
Step 1



Step 2



Disconnect seating and back



Warnings

1. Please check was the components of the chair all included and can be used.
2. Please DO NOT sit on the armrests and footrest to eliminate the risk of tipping over.
3. Never sit on the footrest when it is open, even a child.
4. If the sofa damaged or doesn't match the website product, please take clear picture and label of the carton to our service team, and we'll help you to solve the problem.
5. When you push the button switch and the foot plate does not open, please check if the buckle line at the bottom of the sofa is loose.
 - Lay down the recliner chair, Pull the hand iron out Find this string which connects to switch.
 - ② Put the buckle cable into the inner hole.
 - Return the iron piece.
6. If the chair still doesn't work, please feedback the information to the customer service in time. We will solve the problem for you as soon as possible.