

CLOSET FLANGES

Used to mount a toilet to the floor, closet flanges connect a toilet to the DWV (Drain, Waste and Vent) system.



OPEN FLANGE

Open flange used primarily in repair work. Requires a test plug or cap for pressure testing.

Materials: ABS, PVC or cast iron. Comes with plastic, stainless steel or metal ring.



CLOSED FLANGE

Closed flange with pre-installed ability for pressure testing. Used primarily in new construction.

Materials: ABS or PVC. Comes with plastic or stainless steel ring.



SPECIALTY FLANGE

Specialty flanges in 45 degree or offset allows for margin of error for drain/pipe alignment.

Materials: ABS or PVC. Comes with plastic, stainless steel or metal ring.

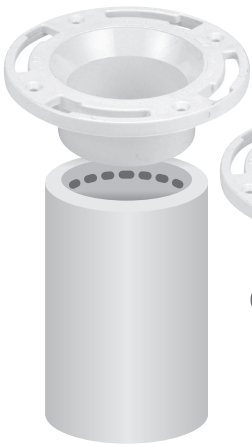


REPAIR FLANGE

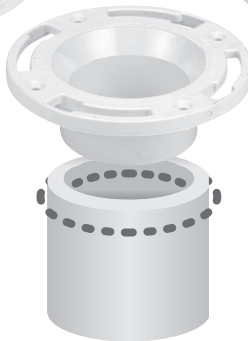
Replaces broken cast iron closet flanges.

Materials: ABS, PVC or cast iron.

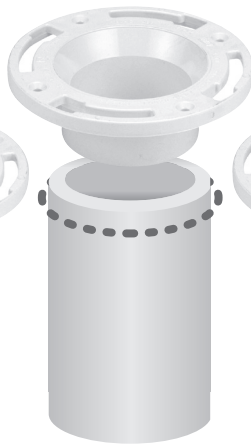
CONNECTIONS



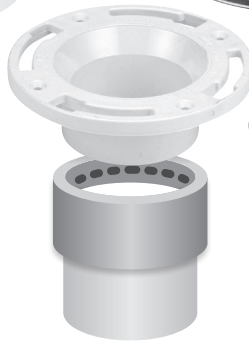
Repair/Remodel
Inside Fit
Not Code Approved



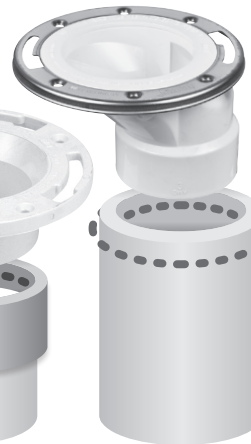
Inside/Outside Fit



Hub
Outside Fit



Spigot
Same size as Pipe
Requires Fitting



Offset
Inside/Outside Fit



Twist-N-Set
Inside Fit
Not Code Approved



45 Degree Spigot Fit
Requires Fitting



Find us on

©2018 OateySCS. All Rights Reserved. This information is based on data believed to be reliable but Oatey makes no warranties, express or implied, as to its accuracy and assumes no liability arising out of its use. The data listed falls within the normal range of product properties but should not be used to establish specification limits or used alone as the basis of design. Oatey's liability to purchasers is expressly limited to the terms and conditions of sale. Oatey is a trademark of Oatey Co. Oatey Co. is part of the Oatey family of companies. All other trademarks can be found on Oatey.com.