

# Rheem® and Ruud® Water Heater Accessories

**...for fast, economical installation and operation.**

Rheem or Ruud water heater accessory kits for easier, quicker and more economical water heater installation. These custom-made Rheem or Ruud accessories can help you and your customers meet local code requirements.



## CATCH PAN KIT

Available in 6 sizes to help protect any installation area from possible water damage. Each 2" deep drain pan is manufactured of aluminum and fitted with a 1" drain outlet. Provides that extra level of "protection assurance" that many homeowners and apartment dwellers are looking for. Available in 14", 16", 19", 22", 24", and 26½" diameters. Our specially designed, tapered side wall allows for "one-inside-the-other" stacking and minimal storage area. Available with side or bottom drain outlet.



Catch pan must conform to local codes.



## STAND KIT FOR GAS WATER HEATERS

For 30, 40, and 50 gallon gas models. The stand kit is an easy, economical way to meet National Fuel Gas Code and local code requirements to raise a gas water heater 18". Can be pre-assembled for one man, on-the-job installation. More economical than a carpenter-built stand. One unit fits 30, 40, and 50 gallon tall models and 30 and 40 gallon stubby models. (AS-29061A)

## WALL MOUNTING KIT

**For Point-of-Use Electric Water Heaters.**

This wall mounting kit for point-of-use electric water heater installations provides an easy way to mount the unit off the floor, out of the way for more usable floor space in a small area. It's been designed for use with 6, 10, 15, and 20 gallon models (AS-36111-A) and all walls with 16" stud centers. All necessary parts are included in this easy to install, time-and-money saving kit.



## HEAT TRAP FITTINGS

**Designed for more economical operation of residential water heaters.**

Easy to install – equally effective on gas or electric water heaters. Reduces convective heat loss in the piping during standby. Dielectric fitting shields against galvanic corrosion. Both fittings are electro zinc plated and polypropylene lined. New design gives quiet operation.

# Kit Contents and Installation Instructions

## INSTALLATION INSTRUCTIONS— WALL MOUNTING KIT

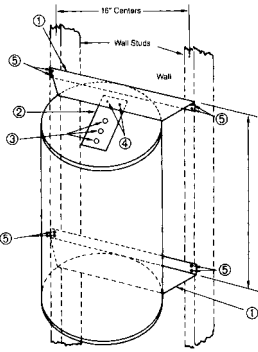


Fig. 1

1. Locate wall studs in the area where water heater is to be mounted. Wall support brackets are designed for 16" wall stud centers. Refer to Figure 1.

2. Determine the desired height of the water heater above the floor. Position one wall support bracket (1), with flange UP at the determined bottom point of the water heater. Level the bracket and fasten it securely to the wall studs with four lag bolts  $\frac{1}{4}$ " x 2 $\frac{1}{2}$ " (5).

3. Position the upper wall bracket (1), flange DOWN, so the inside dimension "X" between the two wall support brackets agrees with the water heater heights shown in the table. Level the bracket and fasten it securely to the wall studs with the four remaining lag bolts  $\frac{1}{4}$ " x 2 $\frac{1}{2}$ " (5).

### FOR USE WITH POINT-OF-USE ELECTRIC WATER HEATERS 6-10-15-20 GALLON MODELS

The following items are included in the kit: AS-36111-A.

ITEM	QTY.	DESCRIPTION
1	2	Brackets, Wall Support (AS-29063)
2	1	Bracket, Water Heater, Top Support (AS-36112)
3	1	Screw-Thread Cutting $\frac{1}{4}$ "-20 (AP-7909-B)
4	2	Screws, Self-Tapping 10-32 x $\frac{1}{4}$ " (AP-8412-C)
5	8	Lag Bolts, $\frac{1}{4}$ " x 2 $\frac{1}{2}$ " (AP-8433-B)

HEATER SIZE	DIMENSION FIGURE 1	SELECTION ROW FIGURE 2
6 gallon	15 $\frac{3}{4}$ "	A
10 gallon	15 $\frac{3}{4}$ "	A
15 gallon	17 $\frac{3}{4}$ "	B
20 gallon	19 $\frac{3}{4}$ "	C

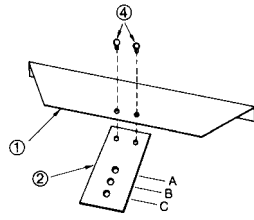


Fig. 2

4. Using the  $\frac{1}{4}$ "-20 thread cutting screw (3) furnished with the kit, mount the water heater top support bracket (2) to the top of the water heater by inserting the screw (3) through the bracket (2) into the top center of the water heater. The water heater top support bracket (2) has three holes designated "A," "B," and "C." See Figure 2 and refer to the selection chart below to position the different water heater diameters to the correct hole in the bracket (2). Tighten the screw securely.

5. Position, and temporarily support, the water heater between the two wall support brackets (1). Position the water heater top support bracket (2) between the upper wall support bracket (1) and the top of the water heater.

With the two 10-32 x  $\frac{1}{4}$ " self-tapping screws (4), secure the water heater top support bracket (2) to the upper wall support bracket (1). The screws should pass through the wall support bracket (1) and be threaded into the water heater top support bracket (2).

## INSTALLATION INSTRUCTIONS— GAS HEATER STAND

1. Assemble three sets of "X" members made up of one each item (2) and (3) leg extensions supports. Use 10-24 x  $\frac{3}{8}$ " screws (4) and nuts (5) to join the "X" members at their midpoint.

**NOTE:** There is a slight difference in the two leg extension supports (2) and (3) at their angled ends.

2. Attach the "X" members to the three leg extensions (1) using 10-24 x  $\frac{3}{8}$ " screws (4) and nuts (5). Refer to Figures 1 and 2. There are three holes in the lower portion of each leg extension (1), and it is necessary to select the proper one for attaching the lower ends of the leg extension supports (2) and (3). The proper holes are selected on the basis of water heater size and shape as follows:

Upper hole for 40 Gallon Stubby or 50 Gallon Tall.

Middle hole for 30 Gallon Stubby or 40 Gallon Tall.

Lower hole for 30 Gallon Tall.

3. Carefully lay the water heater on its back on some protective material. Insert the assembled stand over the water heater legs, align the holes in the leg extensions (1) with the holes in the water heater's legs and fasten with the #14 x  $\frac{1}{2}$ " sheet metal screws (6). Tighten all fasteners securely.

4. Carefully raise water heater and attached stand to an upright position, and place water heater in desired location.

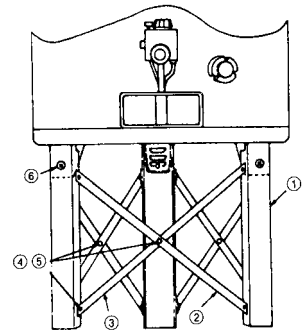
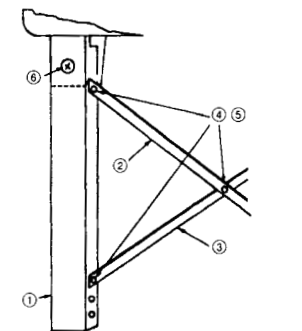


Fig. 1



Upper Hole for 40 Gallon Stubby or 50 Gallon Tall  
Middle Hole for 30 Gallon Stubby or 40 Gallon Tall  
Lower Hole for 30 Gallon Tall

Fig. 2

### FOR USE WITH RESIDENTIAL GAS WATER HEATERS 30-40-50 GALLON MODELS

The following items are included in the kit: AS-29061A.

ITEM	QTY.	DESCRIPTION
1	3	Leg Extension (AS-29059)
2	3	Support, Leg Extension (AS-29060-C)
3	3	Support, Leg Extension (AS-29060-B)
4	15	Screw, Machine #10-24 x $\frac{3}{8}$ " Rd. Hd. (AP-224-E)
5	15	Nut, Hex #10-24 (AP-554)
6	3	Screw, S. M. #4 x $\frac{1}{2}$ " (AP-8274-G)

The number one choice of plumbing professionals.

**RHEEM  
WATER  
HEATERS**

101 Bell Road, Montgomery, Alabama 36117

"In keeping with its policy of continuous progress and product improvement, Rheem reserves the right to make changes without notice."

