

Fig. 1

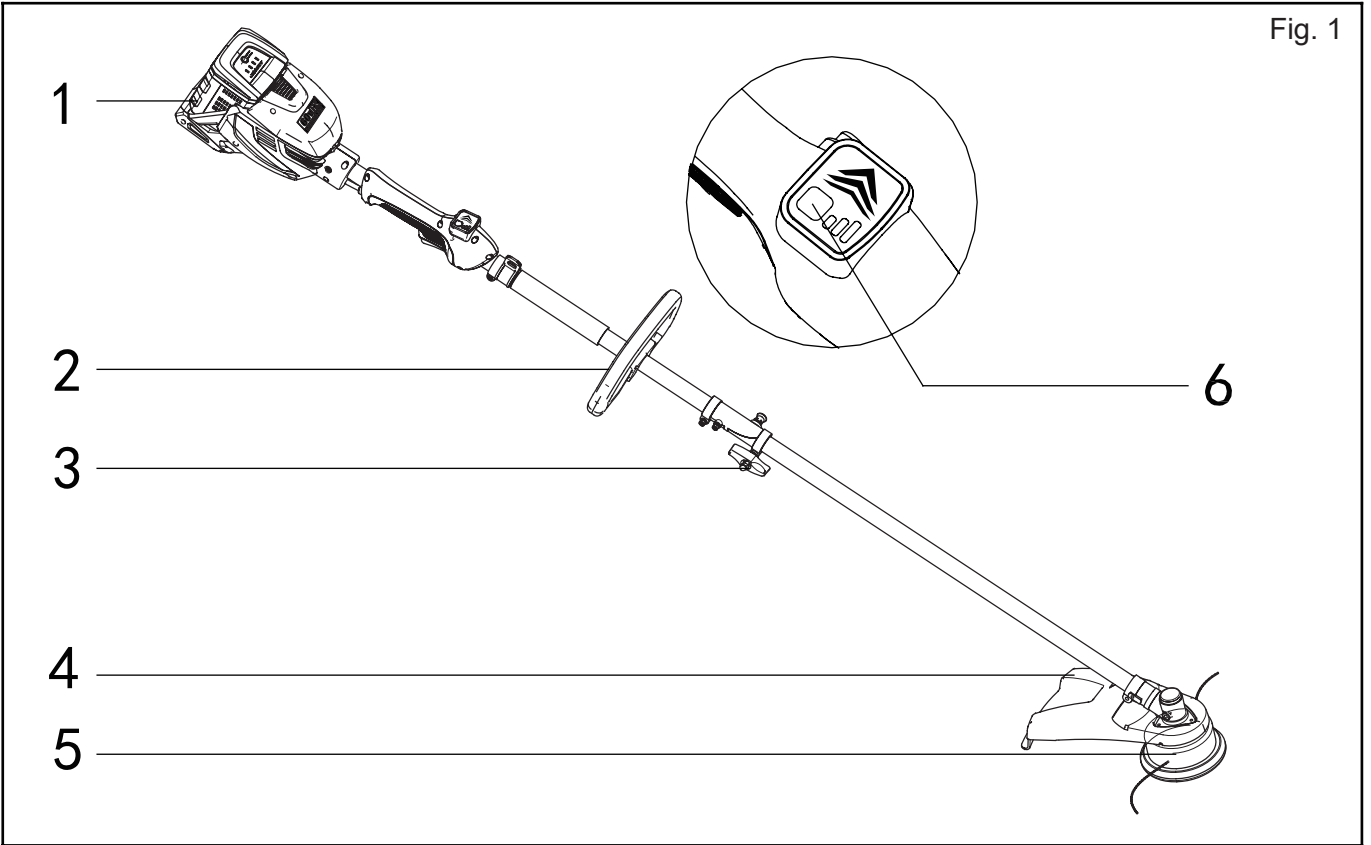
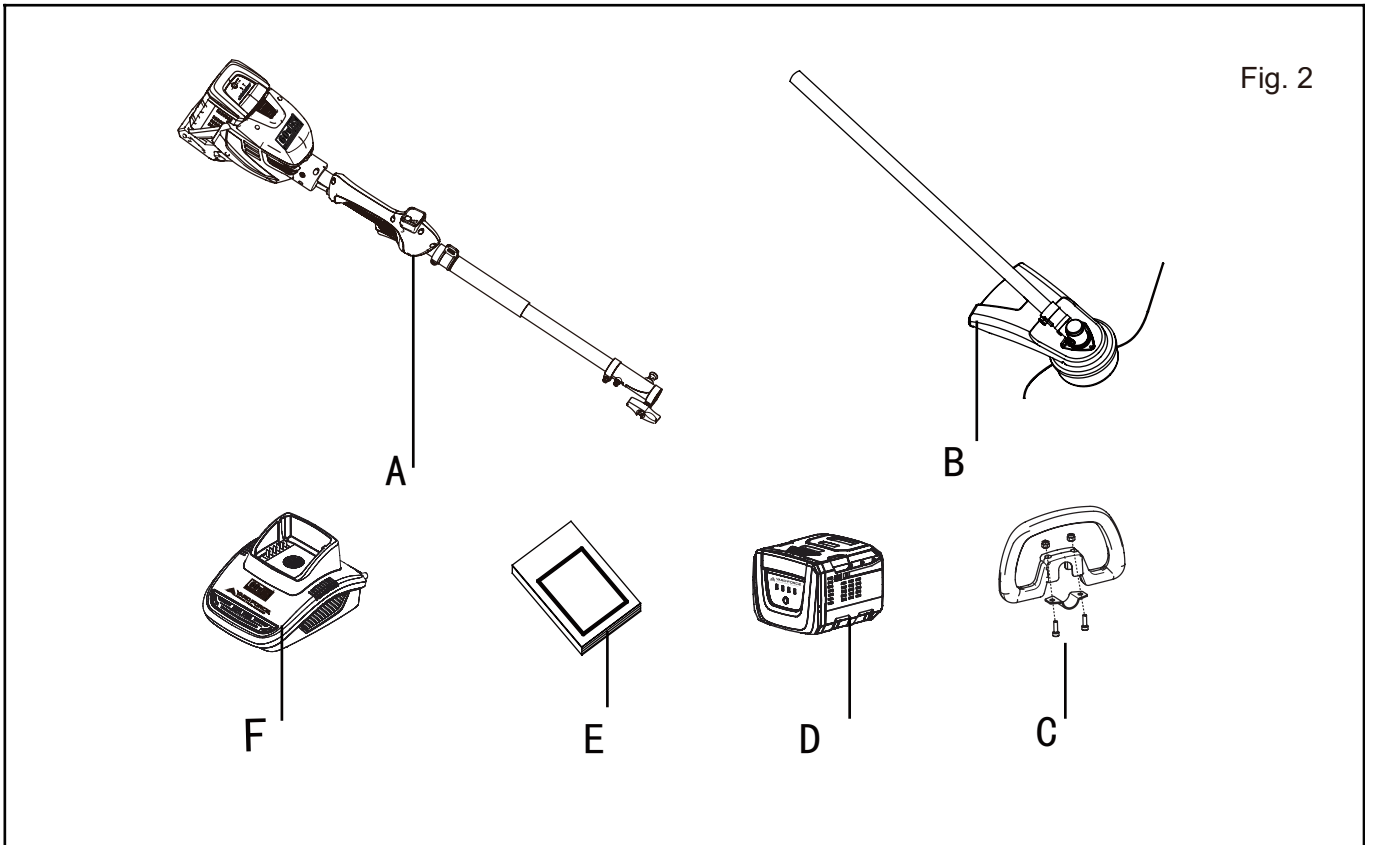


Fig. 2



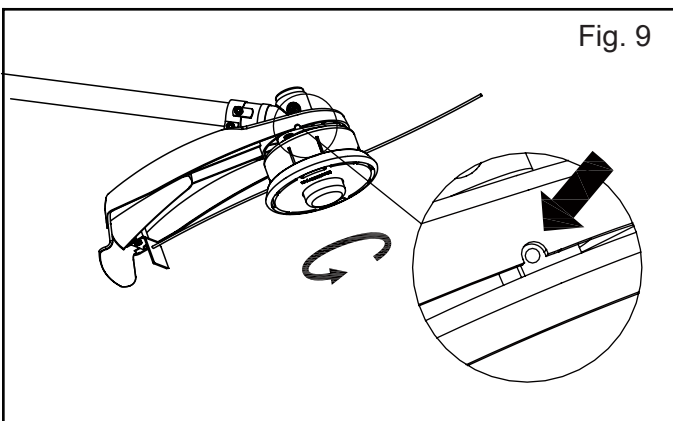
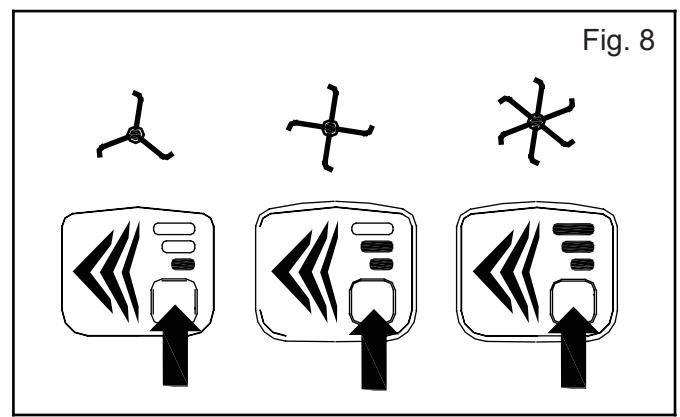
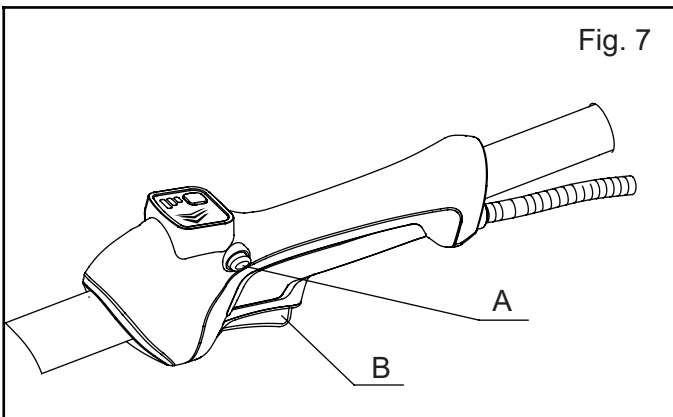
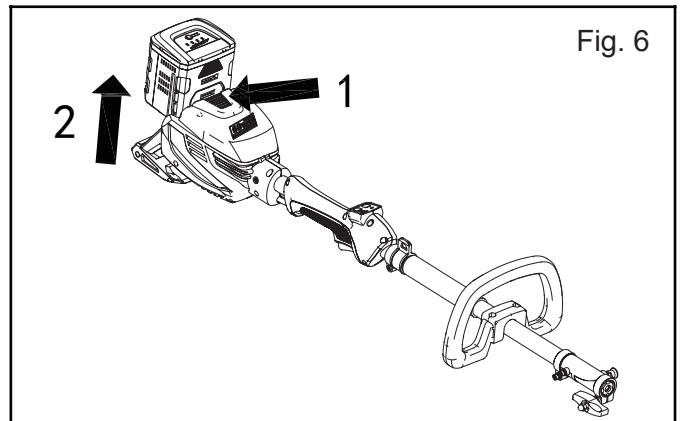
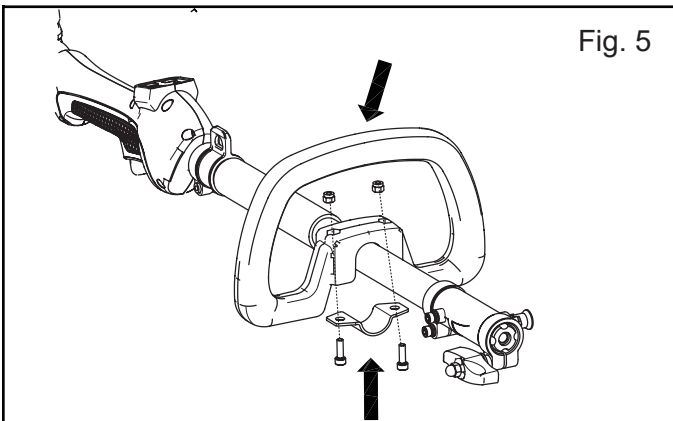
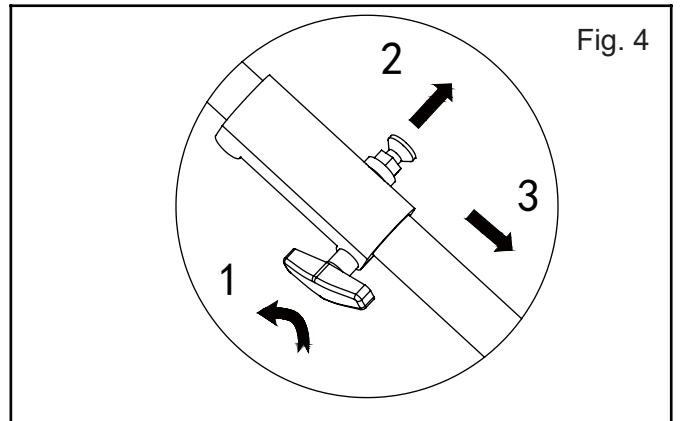
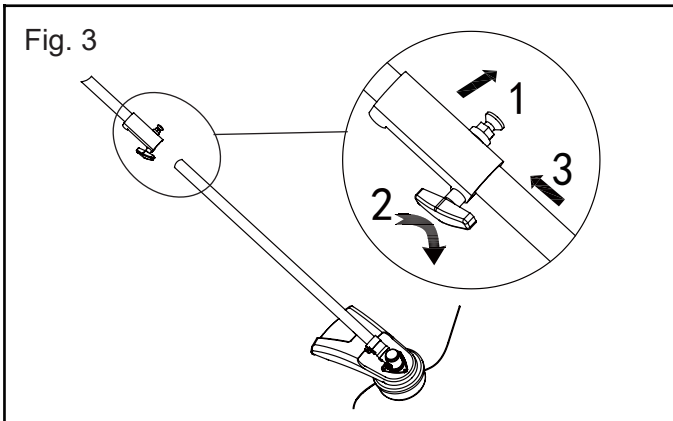


Fig. 10

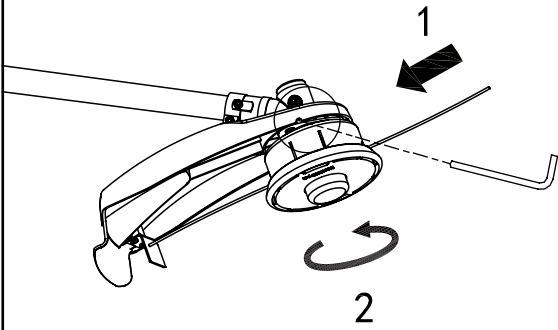


Fig. 11

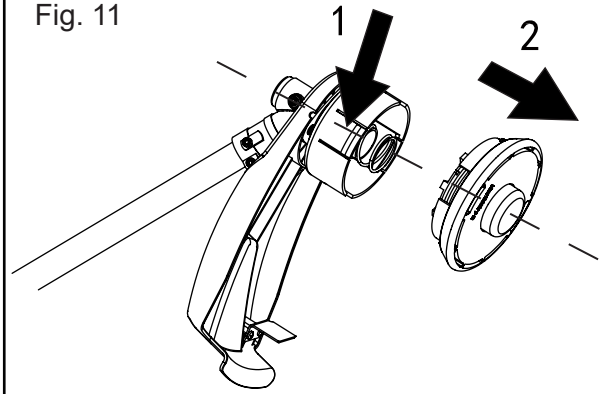


Fig. 12

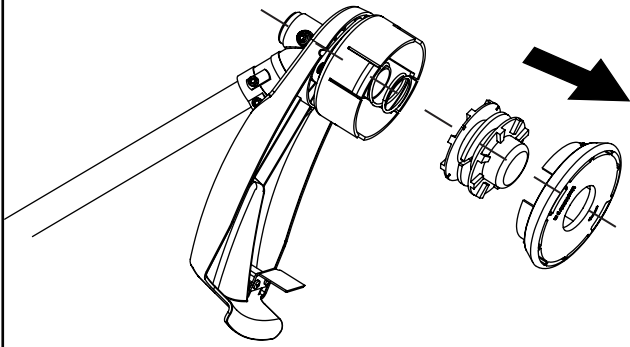


Fig. 13

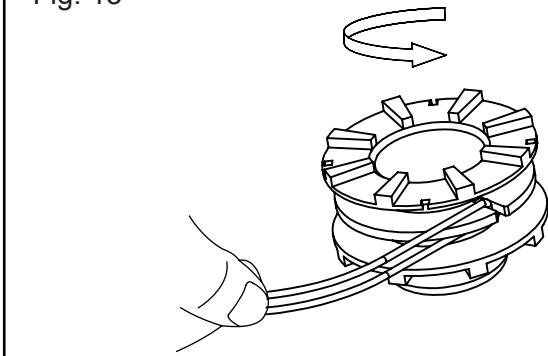
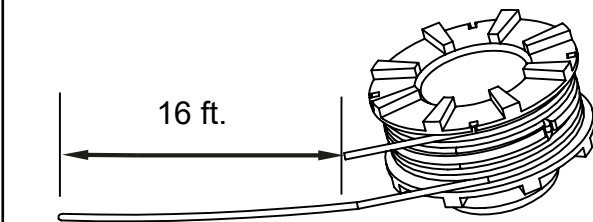


Fig. 14



## DESCRIPTION OF PRODUCT PARTS

### Parts list (See Fig. 1)

1. Power head
2. Auxiliary handle
3. Shaft connector
4. Safety guard
5. Cutting head
6. Speed adjustment button

### Delivery list (See Fig. 2)

- A. Power head assy. x 1
- B. Line trimmer attachment x 1
- C. Auxiliary handle x 1
- D. Battery pack x 1
- E. Manual x 1
- F. Charger x 1

Carefully remove the machine and parts from its packaging. Identify all the parts packaged in the carton against the parts list. Please contact our customer service center (**Monday - Friday 8:30AM - 5:00PM ET**) at **(866) 902-9690** if anything is missing.



**WARNING!** If any parts are damaged or missing, do not operate this tool until the missing parts are replaced. Failure to heed this warning could result in serious personal injury.

**NOTE!** Always recycle the packaging in accordance with local recycling schemes.



**WARNING!** This item requires a two person lift to remove from the packaging. Make sure that you have sufficient space to put the lawn mower down. Keep your feet apart so that you have a stable position, bend at the knees and keep your back straight.

## TECHNICAL SPECIFICATIONS

Item No.	YF60VRX18-LT
Voltage/Capacity	60 v d.c. / 2.5 Ah Li-ion
Cutting Width	16"
Cutting Line Dia.	0.095"(0.080" Compatible)
Line Feed	Dual Line, Tap-Feed
Running Speed	3 Speeds, 4500/5000/5500 RPM
Motor	Brushless

Charger	Input: 100~240 V, 50/60 Hz, Output: 63 v d.c. 2.5 A
Charging Time	60 minutes
Weight	20.2 lbs
Battery Pack Type	YF60VRX2.5-BAT
Adapter Type	YF60VRX2A-CHG

## INTENDED USE

The product is intended for cutting weed, grass or similar soft vegetation in areas that are hard to reach, e.g. under bushes, on slopes and edges. It may not be used to work on unusual thick, dry or wet grass, e.g. pasture grass, or to shred leaves.

For safety reasons it is essential to read the entire instruction manual before first operation and to observe all the instructions therein.

## SAFETY SYMBOLS

The purpose of safety symbols is to attract your attention to possible dangers. The safety symbols and the explanations with them deserve your careful attention and understanding. The symbol warnings do not, by themselves, eliminate any danger. The instructions and warnings they give are no substitutes for proper accident prevention measures.



**WARNING:** Be sure to read and understand all safety instructions in this Operator's Manual, including all safety alert symbols such as "**DANGER**," "**WARNING**," and "**CAUTION**" before using this tool. Failure to follow all instructions listed below may result in electric shock, fire, and/or serious personal injury.

## SAFETY INSTRUCTIONS

This page depicts and describes safety symbols that may appear on this product. Read, understand, and follow all instructions on the machine before attempting to assemble and operate.