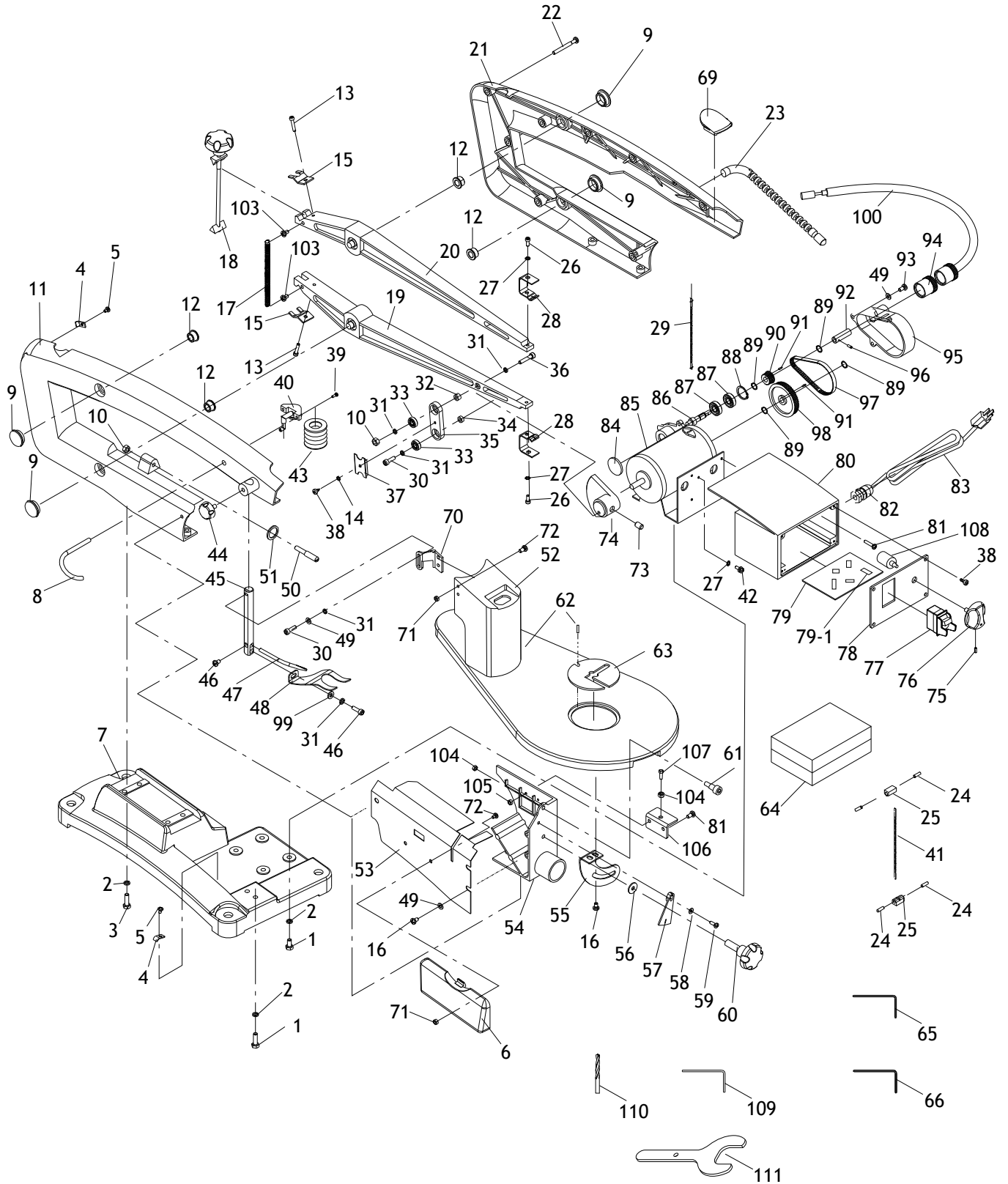


PARTS

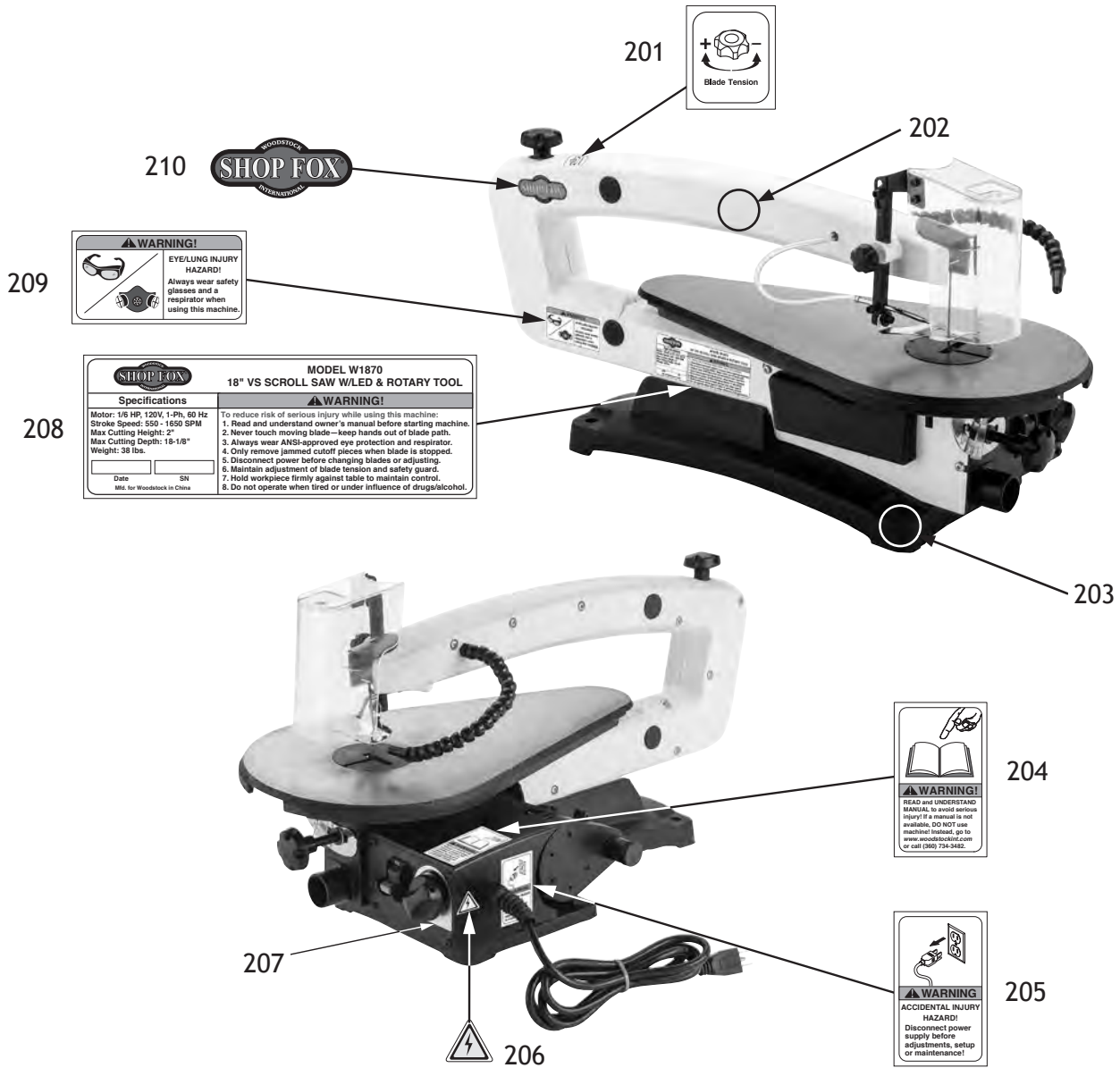
Main



Main Parts List

REF	PART #	DESCRIPTION	REF	PART #	DESCRIPTION
1	X1870001	HEX BOLT M6-1 X 20	55	X1870055	SCALE
2	X1870002	FLAT WASHER 6MM	56	X1870056	FENDER WASHER 6MM
3	X1870003	HEX BOLT M6-1 X 25	57	X1870057	POINTER
4	X1870004	CORD CLAMP PLATE	58	X1870058	FLAT WASHER 4MM
5	X1870005	PHLP HD SCR M4-.7 X 6	59	X1870059	PHLP HD SCR M4-.7 X 12
6	X1870006	STORAGE COMPARTMENT	60	X1870060	KNOB BOLT M6-1 X 13, D44, 5-LOBE
7	X1870007	BASE	61	X1870061	SHOULDER SCREW M6-1 X 11, 8 X 11
8	X1870008	AIR HOSE 6 X 216MM CLEAR	62	X1870062	TABLE W/ROLL PIN 3 X 8MM
9	X1870009	DUST CAP	63	X1870063	TABLE INSERT
10	X1870010	HEX NUT M5-.8	64	X1870064	ACCESSORY TOOL KIT
11	X1870011	LEFT ARM HOUSING	65	X1870065	HEX WRENCH 2.5MM
12	X1870012	OIL SLEEVE BEARING	66	X1870066	HEX WRENCH 4MM
13	X1870013	PHLP HD SCR M4-.7 X 10	69	X1870069	HOUSING COVER
14	X1870014	FLAT WASHER 4MM	70	X1870070	BLADE GUARD CONNECTION PLATE
15	X1870015	PRESSURE PLATE	71	X1870071	HEX NUT M4-.7
16	X1870016	PHLP HD SCR M5-.8 X 8	72	X1870072	PHLP HD SCR M4-.7 X 8
17	X1870017	ARM SPRING	73	X1870073	SET SCREW M8-1.25 X 12
18	X1870018	TENSION BOLT ASSEMBLY	74	X1870074	ECCENTRIC COUNTERWEIGHT
19	X1870019	LOWER ARM ASSEMBLY	75	X1870075	SET SCREW M5-.8 X 6
20	X1870020	UPPER ARM ASSEMBLY	76	X1870076	VARIABLE-SPEED DIAL
21	X1870021	RIGHT ARM HOUSING	77	X1870077	TOGGLE SWITCH KEDU HY7
22	X1870022	PHLP HD SCR M5-.8 X 50	78	X1870078	SWITCH COVER
23	X1870023	LAMP ASSEMBLY	79	X1870079	CIRCUIT BOARD
24	X1870024	SET SCREW M5-.8 X 8	79-1	X1870079-1	FUSE 5A 250V 0.18" FAST-ACTING, GLASS
25	X1870025	BLADE ADAPTER	80	X1870080	JUNCTION BOX
26	X1870026	CAP SCREW M4-.7 X 10	81	X1870081	PHLP HD SCR M4-.7 X 10
27	X1870027	EXT TOOTH WASHER 4MM	82	X1870082	STRAIN RELIEF TYPE-3 M16-1.5
28	X1870028	BLADE SUPPORT	83	X1870083	POWER CORD 18G 3W 72" 5-15P
29	X1870029	BLADE (PIN-END) 15T	84	X1870084	DUST COVER
30	X1870030	CAP SCREW M5-.8 X 16	85	X1870085	MOTOR 1/6HP 120VDC
31	X1870031	FLAT WASHER 5MM	86	X1870086	SHAFT
32	X1870032	UPPER SPACER 6 X 9.5MM	87	X1870087	BALL BEARING 608-2RS
33	X1870033	BALL BEARING 625ZZ	88	X1870088	EXT RETAINING RING 22MM
34	X1870034	LOWER SPACER 4 X 9.5MM	89	X1870089	E-CLIP 6MM
35	X1870035	ECCENTRIC CONNECTOR	90	X1870090	DRIVEN PULLEY
36	X1870036	CAP SCREW M5-.8 X 30	91	X1870091	KEY 3 X 3 X 8
37	X1870037	ECCENTRIC CONNECTOR PLATE	92	X1870092	COUPLING
38	X1870038	TAP SCREW 4.2 X 9.5	93	X1870093	PHLP HD SCR M5-.8 X 12
39	X1870039	PHLP HD SCR M3-.5 X 10	94	X1870094	SHAFT GUARD
40	X1870040	BELLOWS CONNECTOR PLATE	95	X1870095	PULLEY COVER
41	X1870041	BLADE (PLAIN-END) 18T	96	X1870096	ROLL PIN 3 X 8MM
42	X1870042	PHLP HD SCR M4-.7 X 8 W/WASHER	97	X1870097	TIMING BELT 74XXL 234.95 X 5MM
43	X1870043	BELLOWS	98	X1870098	DRIVING PULLEY
44	X1870044	KNOB BOLT M6-1 X 10, D27, 4-LOBE	99	X1870099	FENDER WASHER 5MM
45	X1870045	HOLD-DOWN SHOE ROD	100	X1870100	FLEXIBLE SHAFT
46	X1870046	CAP SCREW M5-.8 X 10	103	X1870103	PHLP HD SCR M4-.7 X 12
47	X1870047	AIR NOZZLE 5.2 X 73MM	104	X1870104	HEX NUT M6-1
48	X1870048	HOLD-DOWN SHOE	105	X1870105	LOCK NUT M4-.7
49	X1870049	FLAT WASHER 5MM	106	X1870106	SUPPORT BRACKET
50	X1870050	SHOULDER SCREW M5-.8 X 23, 8 X 25	107	X1870107	HEX BOLT M6-1 X 20
51	X1870051	FLAT WASHER 8MM	108	X1870108	POTENTIOMETER C104 50V
52	X1870052	BLADE GUARD	109	X1870109	COLLET LOCKING PIN 3MM
53	X1870053	SIDE COVER	110	X1870110	DRILL BIT 1/8
54	X1870054	FRONT HOUSING W/DUST PORT	111	X1870111	COLLET CHUCK WRENCH 9.5MM

Labels & Cosmetics



REF	PART #	DESCRIPTION
201	X1870201	BLADE TENSION KNOB LABEL
202	X1870202	TOUCH-UP PAINT, SHOP FOX WHITE
203	X1870203	TOUCH-UP PAINT, SHOP FOX BLACK
204	X1870204	READ MANUAL LABEL
205	X1870205	DISCONNECT POWER LABEL

REF	PART #	DESCRIPTION
206	X1870206	ELECTRICITY LABEL
207	X1870207	VARIABLE-SPEED DIAL LABEL
208	X1870208	MACHINE ID LABEL
209	X1870209	RESPIRATOR/GLASSES LABEL
210	X1870210	SHOP FOX LOGO

⚠️ WARNING

Safety labels warn about machine hazards and how to prevent serious personal injury. The owner of this machine **MUST** maintain the original location and readability of all labels on this machine. If any label is removed or becomes unreadable, **REPLACE** that label before allowing machine to be operated again. Contact us at (360) 734-3482 or www.woodstockint.com to order new labels.