

PERMASTIK™

Hang it all, save the wall!

Magnetic Insect Screen

Installation Instructions



AFTER SALES SUPPORT

www.permastik.com

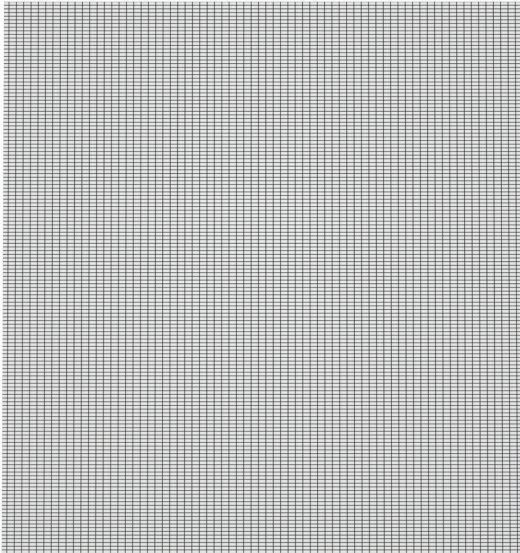
 1300 467 068

Product Code: 79

Parts List

- 1.2m x 1m Mesh
- 4.4m Magnetic Tape
- 4x 60cm Plastic Extrusions
- 4x 50cm Plastic Extrusions
- 4.4m Magnetic Insert
- 4x Corner Connectors
- 2x Metal Clips
- 4x Connectors

A



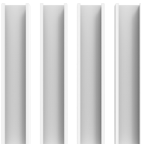
F



G



H



B



C



D

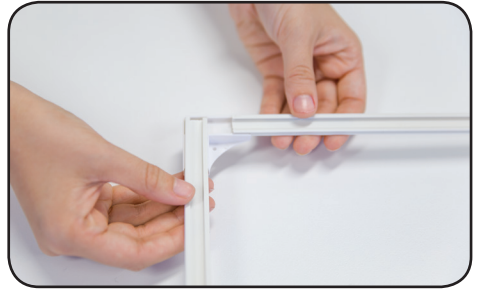
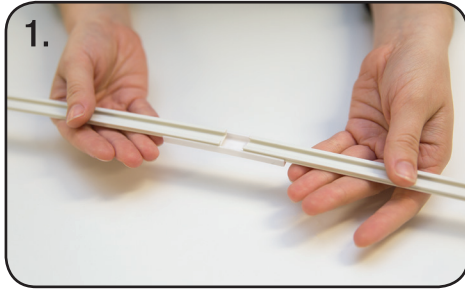


E

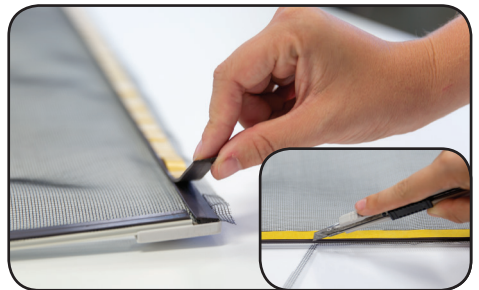
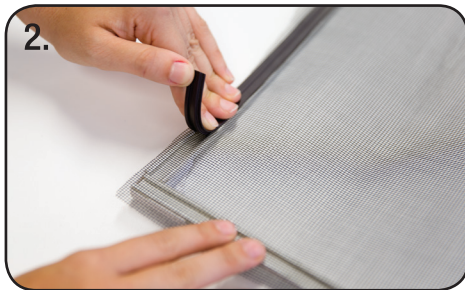


If any parts are missing do not attempt to use your Magnetic Insect Screen.
Please call after sales support to obtain replacements.
Only use parts supplied by the manufacturer with your Magnetic Insect Screen.

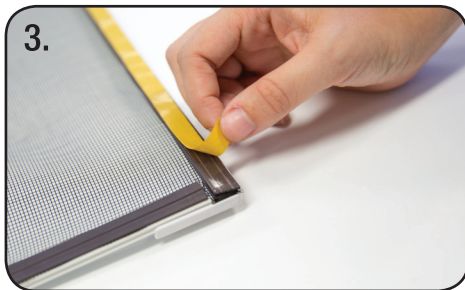
Installation



1. Measure dimensions of window frame vertically and horizontally. Use connectors to adjust plastic extrusions to size of window. Use scissors to cut plastic extrusion if trimming is required. Complete the plastic frame by joining with corner connectors.

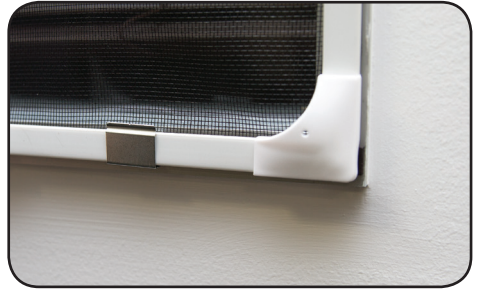


2. Lay mesh over frame and secure by inserting magnetic strip. Trim excess magnetic strip. Align magnetic tape on magnetic strip. Trim excess magnetic tape and mesh.



3. Ensure surface is clean, dry and free from dust. Peel adhesive release paper and apply insect screen to window frame, evenly apply pressure to adhesive areas. Carefully remove frame by gently peeling away from the wall. Evenly press each strip firmly for 30 seconds. Wait 1 hour before placing frame back into position.

Installation Continued



Optional: For added security, use the 2 included metal clips across the bottom of the frame. Install these pieces under the adhesive magnetic tape.

Removal

Use dental floss to gently cut through the adhesive substrate and remove the object from the surface. Stretch or peel off the remaining adhesive, use an adhesive solvent for best results.

