

Poulan PRO[®]

PARTS MANUAL

Zero Turn Mower

P46ZX / 967330901-00

Please read the operator manual carefully and make sure you understand the instructions before using the machine.



When you need spare parts or support in service questions, warranty issues, etc., please consult the following professional:

This manual belongs to the machine with the manufacturing number:	Engine	Transmission

Manufacturing Number

The machine's manufacturing number can be found on the printed plate affixed to the engine compartment.

Stated on the plate, from the top are:

- The machine's type designation (I.D.).
- The manufacturer's type number (Model).
- The machine's serial number (Serial no.)

Please have the type designation and serial number available when ordering spare parts.

The engine's manufacturing number is stamped on one of the valve covers.

The plate states:

- The engine's model.
- The engine's type.
- Code

Please have these available when ordering spare parts.

The wheel motors and hydrostatic pumps have a barcode decal affixed at the rear.

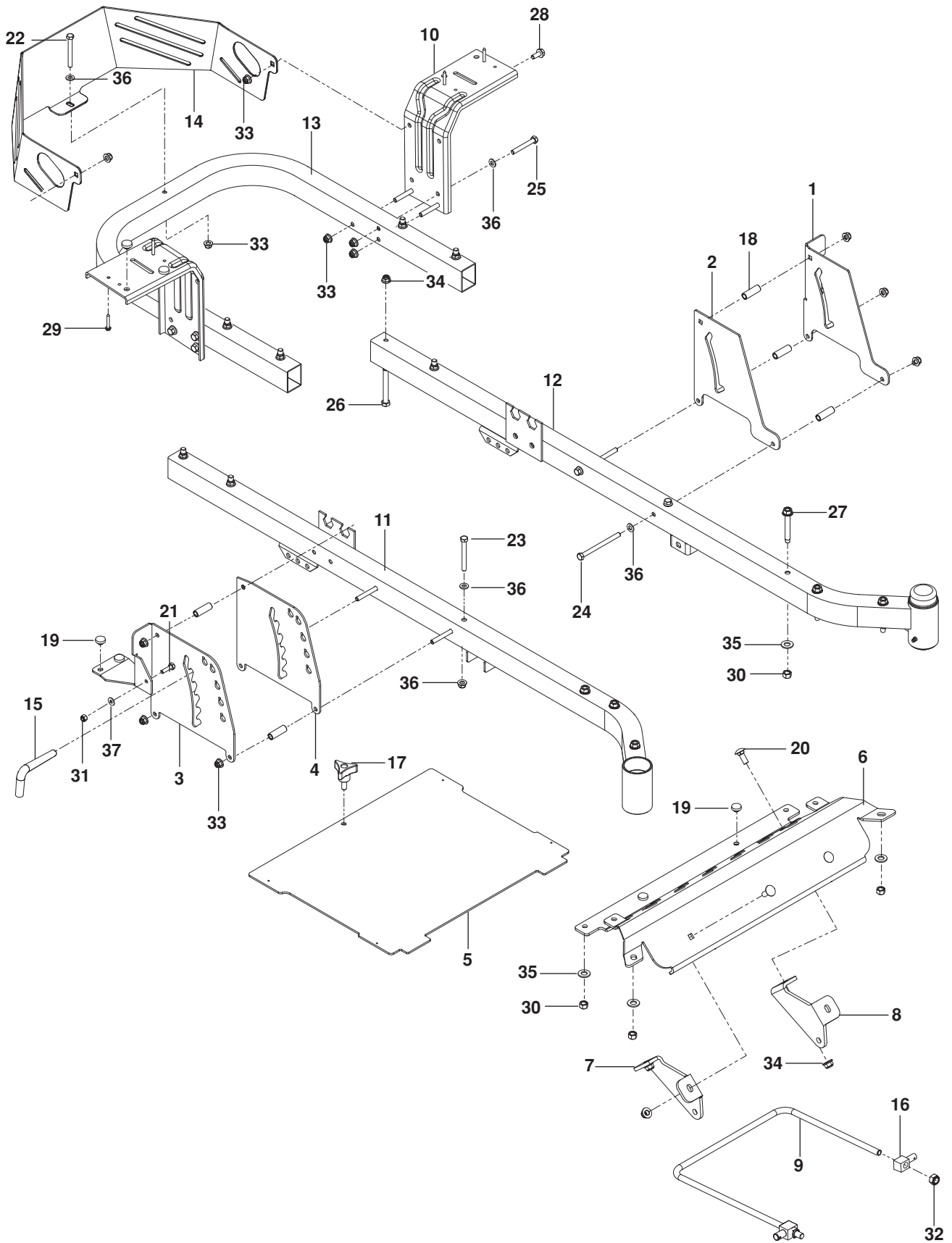
CONTENTS

FRAME.....	4
ENGINE PLATE.....	6
STEERING	8
IGNITION.....	10
BRAKE / LIFT.....	12
HYDRAULIC PUMP- MOTOR.....	14
WHEELS AND TIRES.....	16
MOWER DECK / CUTTING DECK.....	18
SEAT	20
DECALS.....	22
ACCESSORIES	
BAGGER.....	24

Illustrations may or may not represent the actual assemblies and it is not recommended to use this manual as a guide to assemble or disassemble the mower.

NOTE: All fasteners are Grade 5 unless otherwise specified.

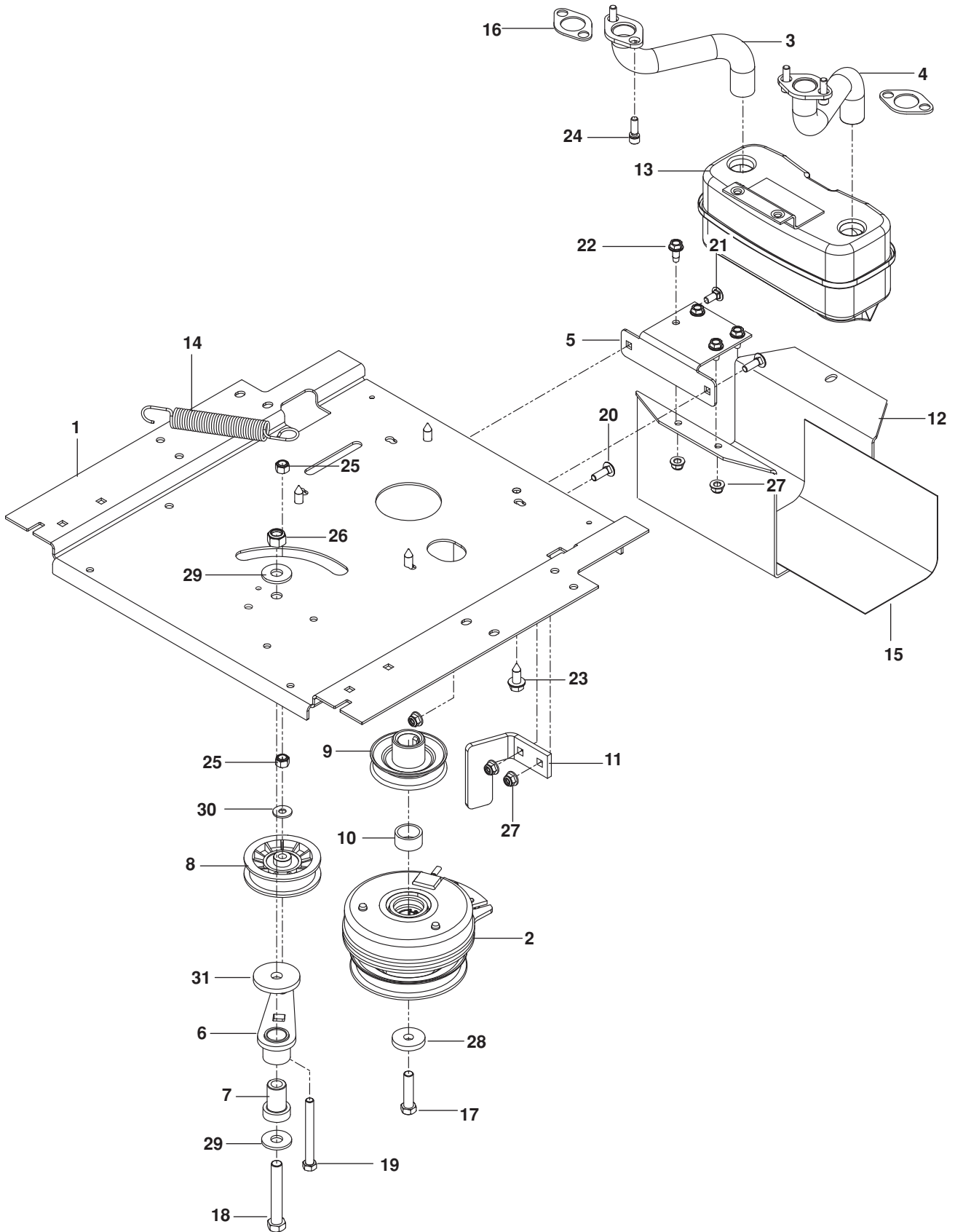
FRAME



FRAME

ITEM	PART NO.	QTY.	DESCRIPTION	ITEM	PART NO.	QTY.	DESCRIPTION
1..	510 26 18-02.....	1	PLATE, OUTER BRAKE BLK	20..	872 14 06-08.....	4	BOLT $\frac{3}{8}$ -16 x 1 RD HD SQNK
2..	510 20 67-03.....	1	PLATE, BRAKE LATCH BLK	21..	874 78 04-16.....	2	BOLT $\frac{1}{4}$ -20 x 1 HEX HD
3..	510 24 56-04.....	1	PLATE, LIFT OUTER BLK	22..	874 49 05-48.....	1	BOLT $\frac{5}{16}$ -18 x 3 HEX HD
4..	510 24 05-02.....	1	PLATE, LIFT INNER BLK	23..	874 78 05-44.....	2	BOLT $\frac{5}{16}$ -18 x 2 $\frac{3}{4}$ HEX HD
5..	581 44 86-06.....	1	PLATE, FOOT	24..	874 78 05-64.....	4	BOLT $\frac{5}{16}$ -18 x 4 HEX HD
6..	522 74 07-09.....	1	FOOT REST BLK	25..	874 78 05-36.....	6	BOLT $\frac{5}{16}$ -18 x 2 $\frac{1}{4}$ HEX HD
7..	581 22 28-02.....	1	MOUNT, STRUT RT BLK	26..	874 78 06-48.....	8	BOLT $\frac{3}{8}$ -16 x 3 HEX HD
8..	581 22 29-02.....	1	MOUNT, STRUT LT BLK	27..	874 49 06-44.....	6	BOLT $\frac{3}{8}$ -16 x 2 $\frac{3}{4}$ HEX FLG HD
9..	521 93 81-01.....	1	LINK, FRONT SUSPENSION	28..	874 49 05-12.....	3	BOLT $\frac{5}{16}$ -18 x $\frac{3}{4}$ HEX FLG HD
10..	580 50 13-02.....	2	SUPPORT, FENDER BLK	29..	539 11 06-74.....	4	SCREW #10-12 x 1 $\frac{1}{4}$
11..	510 17 75-02.....	1	FRAME, FRONT RT BLK	30..	539 20 02-82.....	6	NUT $\frac{3}{8}$ -16 HEX JAM NYLOC
12..	510 17 74-02.....	1	FRAME, FRONT LT BLK	31..	873 80 04-00.....	2	NUT $\frac{1}{4}$ -20 HEX NYLOC
13..	510 17 76-02.....	1	FRAME, REAR BLK	32..	539 11 91-24.....	2	NUT $\frac{7}{16}$ -14 HEX NYLOC
14..	522 95 67-08.....	1	GUARD, REAR BLK	33..	539 11 28-99.....	17	NUT $\frac{5}{16}$ -18 HEX FLG NYLOC
15..	510 01 65-03.....	1	LIFT PIN	34..	521 99 65-01.....	12	NUT $\frac{3}{8}$ -16 HEX FLG NYLOC
16..	539 11 47-89.....	2	SWIVEL	35..	819 14 16-14.....	6	WASHER $\frac{3}{8}$ STD FLT
17..	539 10 44-11.....	1	KNOB	36..	819 11 11-16.....	13	WASHER $\frac{5}{16}$ SAE FLT
18..	580 48 61-01.....	6	SPACER	37..	819 18 22-12.....	2	WASHER $\frac{1}{4}$ SAE FLT
19..	539 10 25-87.....	6	BUMPER				

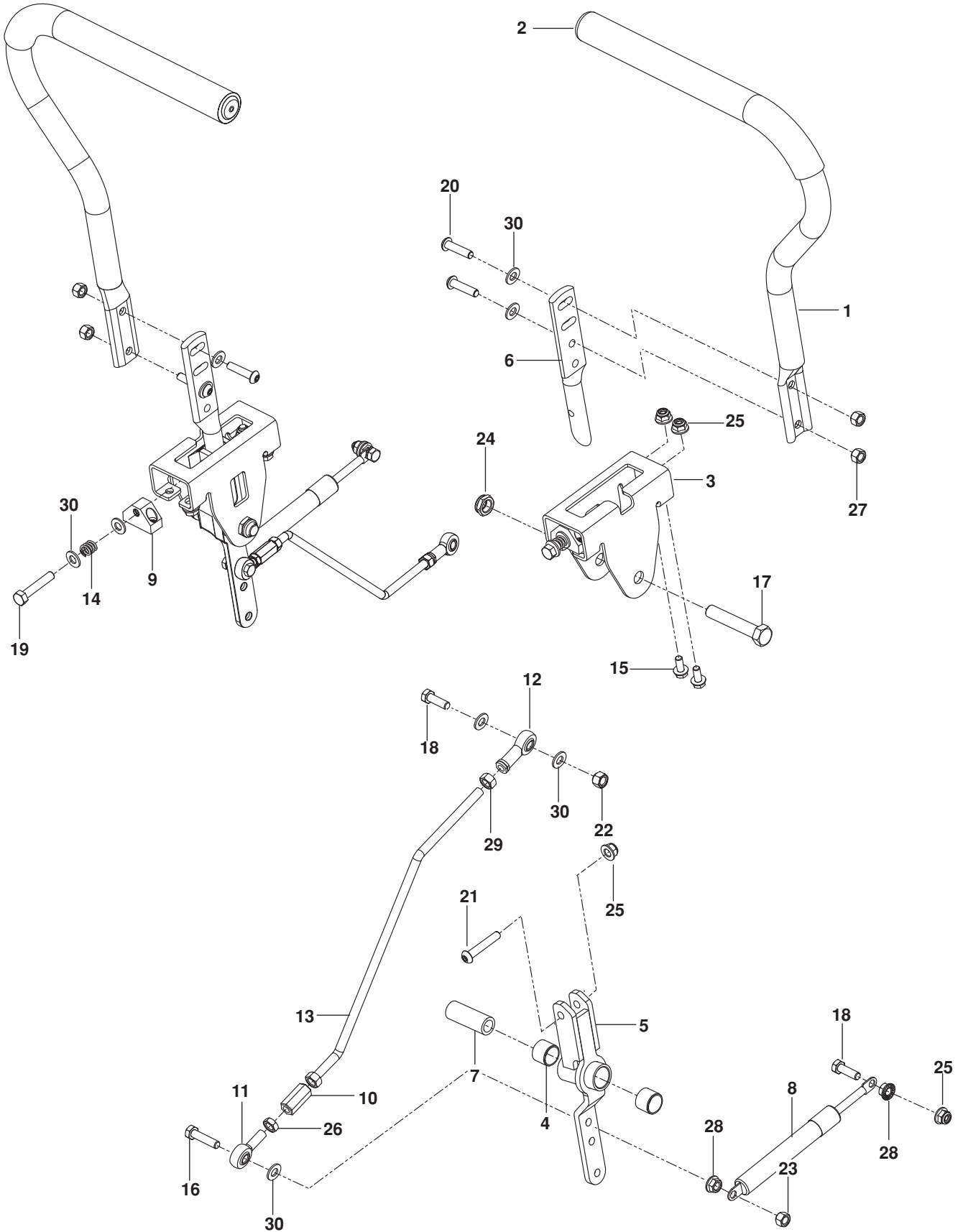
ENGINE PLATE



ENGINE PLATE

ITEM	PART NO.	QTY.	DESCRIPTION	ITEM	PART NO.	QTY.	DESCRIPTION
1..	587 48 07-02.....	1	PLATE, ENGINE BLK	20..	872 14 05-08.....	2	BOLT ⁵ / ₁₆ -18 x 1 RD HD SQNK
2..	585 52 11-01.....	1	CLUTCH	21..	872 14 05-06.....	2	BOLT ⁵ / ₁₆ -18 x ³ / ₄ RD HD SQNK
3..	581 88 10-01.....	1	TUBE, EXHAUST RT	22..	817 49 05-12.....	4	SCREW ⁵ / ₁₆ -18 x ³ / ₄ THD FRM
4..	581 88-11-01	1	TUBE, EXHAUST LT	23..	817 12 06-16.....	4	SCREW ³ / ₈ -16 x 1 THD FRM
5..	581 88 67-02.....	1	BRACKET, MUFFLER BLK	24..	532 18 39-06.....	4	SCREW ⁵ / ₁₆ -18 x 1 SKT HD
6..	532 44 81-45.....	1	ARM, IDLER	25..	539 97 69-79.....	2	NUT ³ / ₈ -16 HEX NYLOC
7..	539 10 12-31.....	1	SPINDLE, IDLER	26..	873 80 08-00.....	1	NUT ¹ / ₂ -13 HEX NYLOC
8..	539 11 03-11.....	1	PULLEY, IDLER	27..	539 11 28-99.....	5	NUT ⁵ / ₁₆ -18 HEX FLG NYLOC
9..	539 11 45-30.....	1	PULLEY, ENGINE	28..	532 12 61-97.....	1	WASHER, CLUTCH
10..	539 11 22-52.....	1	SPACER	29..	819 18 22-12.....	2	WASHER ¹ / ₂ FLT
11..	510 24 60-02.....	1	STOP, CLUTCH BLK	30..	819 12 14-14.....	2	WASHER ⁵ / ₁₆ STD FLT
12..	587 45 12-02.....	1	GUARD, MUFFLER BLK	31..	539 11 26-70.....	1	WASHER, HEAVY
13..	539 13 16-04.....	1	MUFFLER ASSY	NOT SHOWN			
14..	532 19 61-05.....	1	SPRING, DECK DRIVE		585 80 81-01	1	GUARD, SCREEN
15..	539 13 28-59.....	1	SHIELD, MUFFLER		579 07 39-01	2	SCREW, GUARD
16..	532 16 53-91.....	2	GASKET, MUFFLER		-----	1	ENGINE, BRIGGS & STRATTON 44S677 22 HP For engine service and replacement parts, see a B&S dealer
17..	581 33 28-04.....	1	BOLT ⁷ / ₁₆ -20 x 1 ¹ / ₂				
18..	874 78 08-52.....	1	BOLT ¹ / ₂ -13 x 3 ¹ / ₄				
19..	874 52 06-56.....	1	BOLT ³ / ₈ -16 x 3 ¹ / ₂				

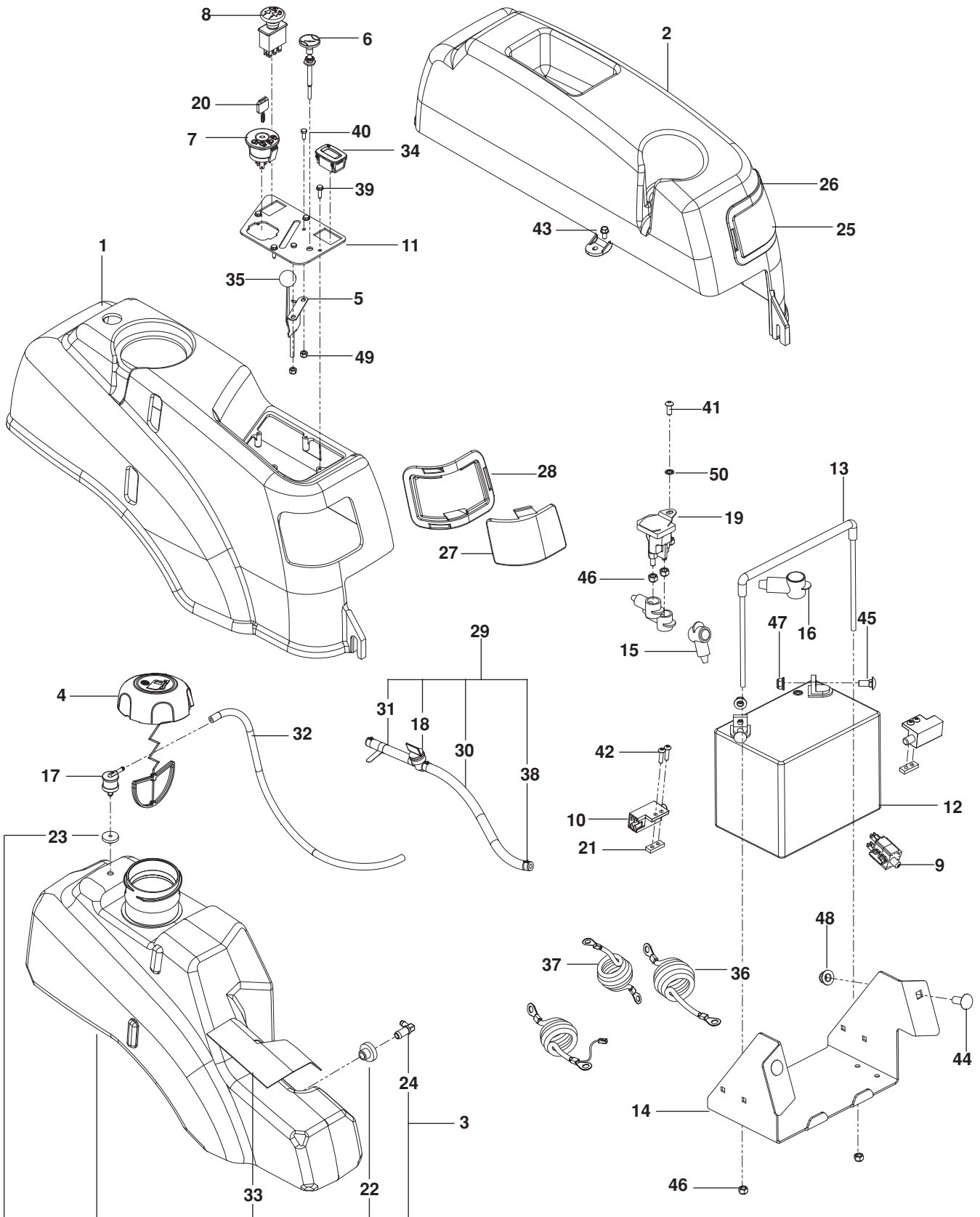
STEERING



STEERING

ITEM	PART NO.	QTY.	DESCRIPTION	ITEM	PART NO.	QTY.	DESCRIPTION
1..	581 82 67-03.....	2.....	LEVER w/ GRIP	16..	874 78 05-28.....	2.....	BOLT $\frac{5}{16}$ -18 x $1\frac{3}{4}$ TPBLT
2..	525 39 29-01.....	2.....	GRIP, FOAM	17..	874 78 08-44.....	2.....	BOLT $\frac{1}{2}$ -13 x $2\frac{3}{4}$
3..	586 73 72-02.....	2.....	BRACKET, CONTROL	18..	874 78 05-16.....	4.....	BOLT $\frac{5}{16}$ -18 x 1 THD FRM
4..	532 43 82-82.....	4.....	BEARING	19..	874 78 05-24.....	2.....	BOLT $\frac{5}{16}$ -18 x $1\frac{1}{2}$
5..	587 18 77-01.....	2.....	LEVER, CONTROL	20..	578 29 64-03.....	4.....	SCREW $\frac{5}{16}$ -18 X $1\frac{1}{4}$ BTN
6..	577 42 00-01.....	2.....	LEVER, HANDLE	21..	576 85 04-02.....	2.....	SCREW $\frac{5}{16}$ -18 X $1\frac{3}{4}$ BTN HD
7..	584 92 72-01.....	2.....	SPACER, PIVOT CONTROL	22..	539 11 56-17.....	2.....	NUT $\frac{5}{16}$ -18 THIN NYLOC
8..	539 10 27-20.....	2.....	DAMPENER	23..	873 80 05-00.....	2.....	NUT $\frac{5}{16}$ -18 HEX NYLOC
9..	581 43 75-01.....	2.....	BLOCK, TRACKING	24..	539 10 80-10.....	2.....	NUT $\frac{1}{2}$ -13 HEX JAM NYL GR2
10..	539 11 66-89.....	2.....	COUPLER, ROD END	25..	539 11 28-99.....	12.....	NUT $\frac{5}{16}$ -18 HEX FLG NYLOC
11..	539 11 66-90.....	2.....	ROD END MALE LH	26..	873 70 05-00.....	2.....	NUT $\frac{5}{16}$ -24 HEX JAM LH
12..	539 11 57-29.....	2.....	ROD END RH	27..	585 98 60-01.....	4.....	NUT $\frac{5}{16}$ -18 HEX NYLOC BLK
13..	580 62 42-01.....	2.....	ROD, MOTION CONTROL	28..	539 99 05-85.....	4.....	NUT $\frac{5}{16}$ -18 HEX WHIZLK
14..	539 10 28-45.....	2.....	SPRING	29..	539 99 02-23.....	4.....	NUT $\frac{5}{16}$ -24 HEX
15..	874 49 05-12.....	8.....	BOLT HEX FLG $\frac{5}{16}$ -18 X $\frac{3}{4}$	30..	819 11 11-16.....	10.....	WASHER $\frac{5}{16}$ SAE FLT

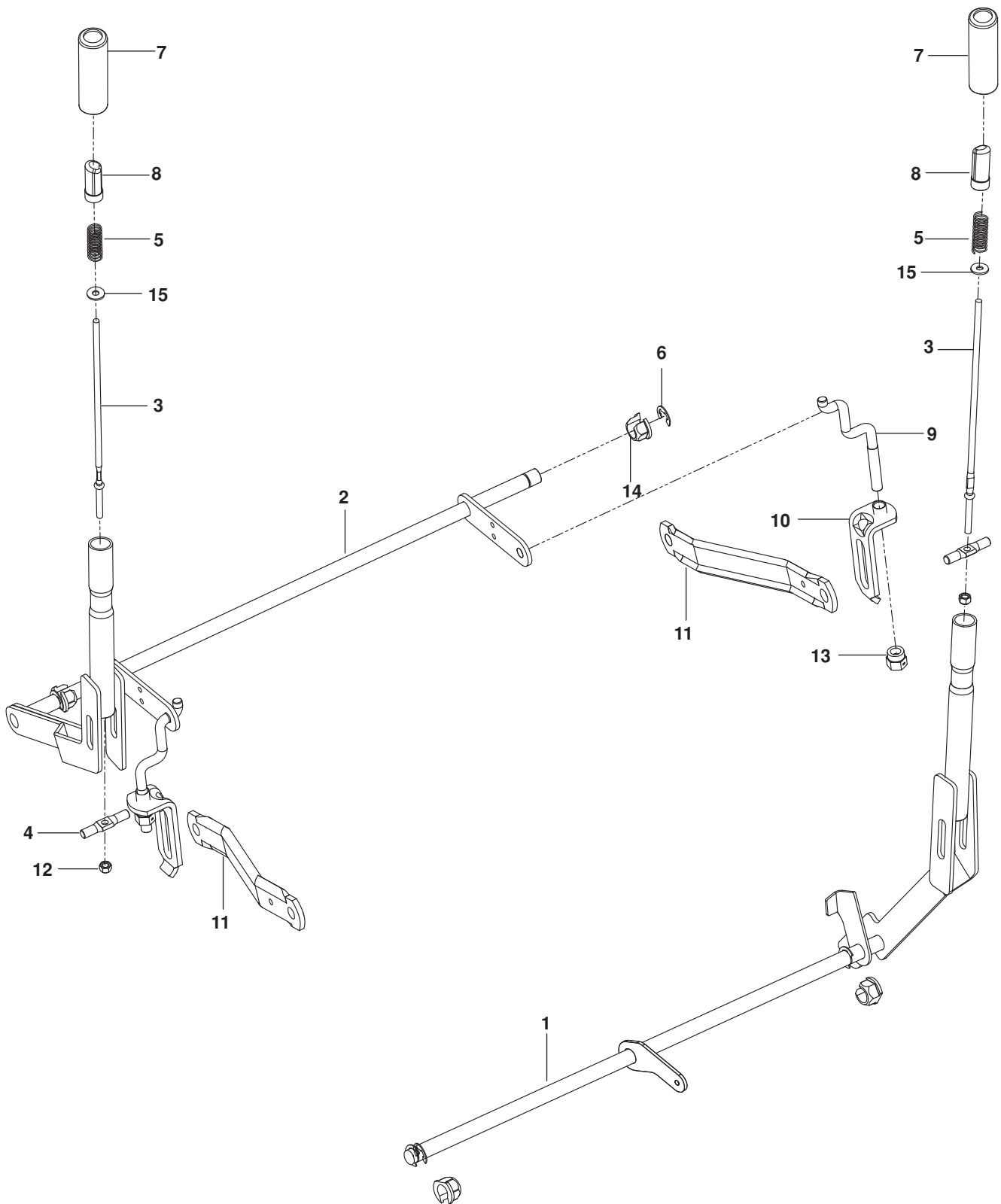
IGNITION



IGNITION

ITEM	PART NO.	QTY.	DESCRIPTION	ITEM	PART NO.	QTY.	DESCRIPTION
1..	578 17 90-02.....	1	FENDER, RT BLK	27..	576 37 12-01.....	1	PANEL, RT
2..	576 37 05-01.....	1	FENDER, LT BLK	28..	576 37 10-01.....	1	RING, RT BLK
3..	578 18 06-04.....	1	ASSY, FUEL TANK	29..	586 12 39-04.....	1	FUEL LINE ASSY
4..	585 12 48-02.....	1	CAP, FUEL w/ TETHER	30..	587 04 48-10.....	1	FUEL LINE 10"
5..	539 11 24-39.....	1	CABLE, THROTTLE	31..	587 04 48-03.....	1	FUEL LINE 3"
6..	539 11 24-39.....	1	CABLE, CHOKE	32..	587 04 45-20.....	1	HOSE, VAPOR ³ / ₁₆ x 20"
7..	539 10 75-41.....	1	SWITCH, IGNITION	33..	522 55 91-01.....	1	SHIELD, HEAT
8..	532 17 46-52.....	1	SWITCH, CLUTCH	34..	586 16 18-01.....	1	METER, SERVICE
9..	532 19 78-02.....	1	SWITCH, BRAKE	35..	539 13 30-49.....	1	KNOB
10..	532 10 95-53.....	2	SWITCH, NC	36..	539 10 33-06.....	2	CABLE, POSITIVE RED
11..	584 25 46-02.....	1	PANEL, CONTROL	37..	539 11 00-68.....	1	CABLE, NEGATIVE BLK
12..	539 10 24-36.....	1	BATTERY	38..	532 12 34-87.....	4	CLAMP, HOSE
13..	539 13 12-09.....	1	TIE DOWN, BATTERY	39..	539 11 06-73.....	2	SCREW 10-24 x ³ / ₄ WSH HD
14..	585 04 87-02.....	1	BOX, BATTERY BLK	40..	539 99 04-11.....	2	SCREW 10-24 x ¹ / ₂ HEX HD
15..	539 11 64-00.....	3	INSULATOR	41..	539 11 12-29.....	1	SCREW ¹ / ₄ -20 x ⁵ / ₈ BTN SKT
16..	539 10 27-59.....	1	INSULATOR	42..	574 82 27-01.....	4	SCREW 10-24 x ³ / ₄ SKT HD
17..	576 61 81-01.....	1	VALVE, FUEL CHECK	43..	817 49 04-08.....	2	SCREW ¹ / ₄ -20 x ¹ / ₂
18..	539 91 63-25.....	1	VALVE, FUEL	44..	539 99 06-45.....	2	BOLT ³ / ₈ -16 x 1 RD HD SQNK
19..	532 19 25-07.....	1	SOLENOID	45..	539 99 03-16.....	2	BOLT ⁵ / ₁₆ -18 x ³ / ₄ RD HD SQNK
20..	532 14 04-01.....	1	KEY, IGNITION	46..	539 97 69-78.....	4	NUT ¹ / ₄ -20 HEX NYLOC
21..	581 22 30-01.....	2	PLATE, TAPPED	47..	539 11 28-99.....	2	NUT ⁵ / ₁₆ -18 FLANGE NYLOC
22..	539 10 52-45.....	1	GROMMET, RUBBER	48..	521 99 65-01.....	2	NUT ³ / ₈ -16 HEX FLG NYLOC
23..	576 61 82-01.....	1	GROMMET, CHECK VALVE	49..	539 97 69-77.....	2	NUT 10-24 HEX NYLOC
24..	539 11 04-32.....	1	ELBOW	50..	539 99 00-53.....	1	WASHER ¹ / ₄ ITLW
25..	576 37 11-01.....	1	PANEL, LT	NOT SHOWN			
26..	576 37 09-01.....	1	RING, LT BLK		585 72 77-01	1	HARNES, WIRING

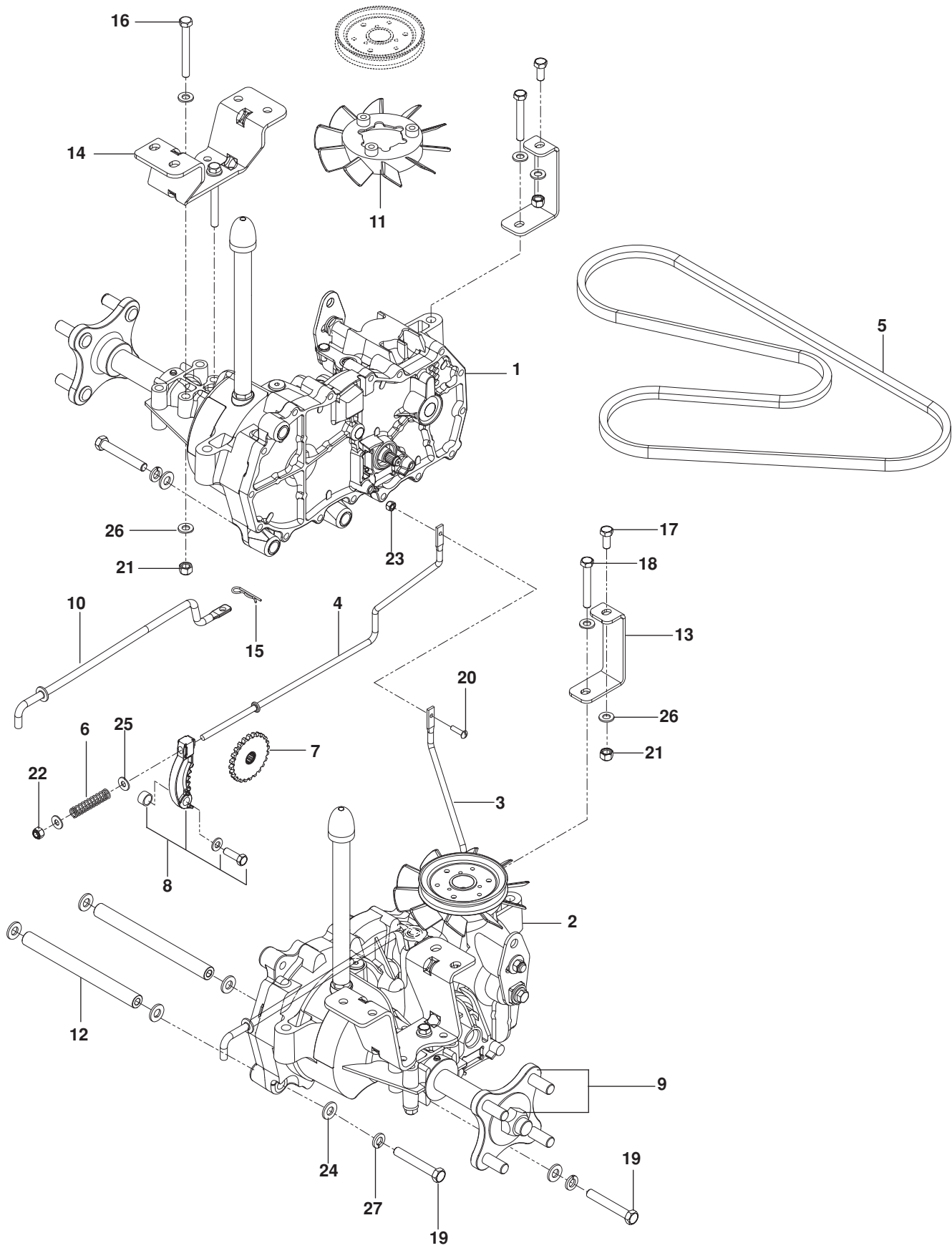
BRAKE / LIFT



BRAKE / LIFT

ITEM	PART NO.	QTY.	DESCRIPTION	ITEM	PART NO.	QTY.	DESCRIPTION
1..	580 43 58-01.....	1	SHAFT, BRAKE	9..	525 84 72-01.....	2	LINK, REAR SUSPENSION
2..	586 76 02-02.....	1	SHAFT, LIFT	10..	522 85 86-01.....	2	BRACKET, CENTERING LNK
3..	510 42 29-01.....	2	ROD, HANDLE RELEASE	11..	532 19 51-85.....	2	ARM, SUSPENSION RR
4..	580 96 04-01.....	1	ROD, LATCH RELEASE	12..	873 80 04-00.....	2	NUT ¼-20 HEX NYLOC
5..	510 03 07-01.....	2	SPRING, COMPRESSION	13..	532 17 59-94.....	2	NUT, LIFT LINK
6..	539 10 50-69.....	3	E-RING	14..	510 18 49-01.....	4	NUT, PLASTIC
7..	510 20 72-01.....	2	GRIP, HANDLE	15..	819 09 12-16.....	1	WASHER ¼ FLT
8..	510 20 73-01.....	2	BUTTON, PUSH				

HYDRAULIC PUMP- MOTOR

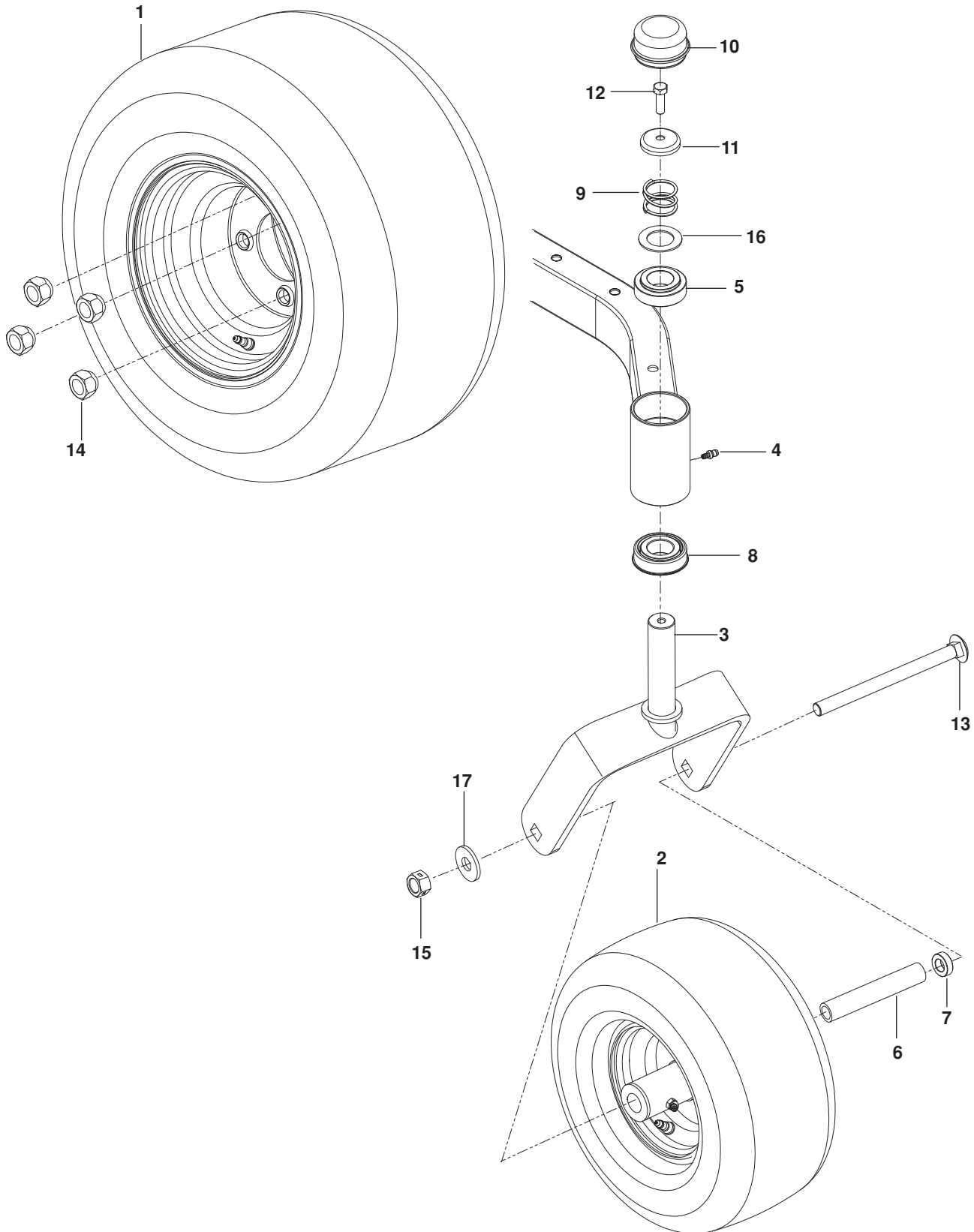


HYDRAULIC PUMP- MOTOR

ITEM	PART NO.	QTY.	DESCRIPTION
1..	510 37 56-01.....	1	EZT, LT
2..	510 37 56-02.....	1	EZT, RT
3..	574 03 05-01.....	1	ROD, EZT BRAKE LT
4..	574 03 05-02.....	1	ROD, EZT BRAKE RT
5..	539 11 04-11.....	1	BELT, EZT
6..	539 11 03-42.....	2	SPRING, BRAKE ROD
7..	539 12 00-80.....	2	COG, BRAKE DISC
8..	539 12 00-79.....	2	BRAKE ARM KIT
9..	575 50 70-01.....	1	HUB KIT w/ HUBS, NUTS
10..	522 94 11-01.....	2	LINK ARM, BYPASS
11..	539 12 07-85.....	2	BLADE, FAN
12..	510 18 41-04.....	2	SPACER TUBE
13..	580 80 65-02.....	2	SUPPORT, EZT FRT
14..	580 80 66-02.....	2	MOUNT, EZT RR BLK
15..	539 97 69-88.....	1	HAIRPIN

ITEM	PART NO.	QTY.	DESCRIPTION
16..	874 78 05-44.....	4	BOLT ⁵ / ₁₆ -18 x 2 ³ / ₄ HEX HD
17..	874 78 05-12.....	2	BOLT ⁵ / ₁₆ -18 x ³ / ₄ HEX HD
18..	874 78 05-36.....	2	BOLT ⁵ / ₁₆ -18 x 2 ¹ / ₄ HEX HD
19..	874 78 06-40.....	4	BOLT ³ / ₈ -16 x 2 ¹ / ₂ HEX HD
20..	874 81 10-12.....	1	SCREW 10-24 x ³ / ₄ SLTD RD
21..	873 80 05-00.....	8	NUT ⁵ / ₁₆ -18 HEX NYLOC
22..	873 80 04-00.....	2	NUT ¹ / ₄ -20 HEX NYLOC
23..	539 97 69-77.....	1	NUT 10-24 HEX NYLOC
24..	819 13 13-16.....	8	WASHER ³ / ₈ SAE FLT
25..	819 09 10-16.....	4	WASHER ¹ / ₄ SAE FLT
26..	819 11 11-16.....	14	WASHER ⁵ / ₁₆ SAE FLT
27..	810 03 06-00.....	4	WASHER ³ / ₈ SPLT LCK

WHEELS AND TIRES

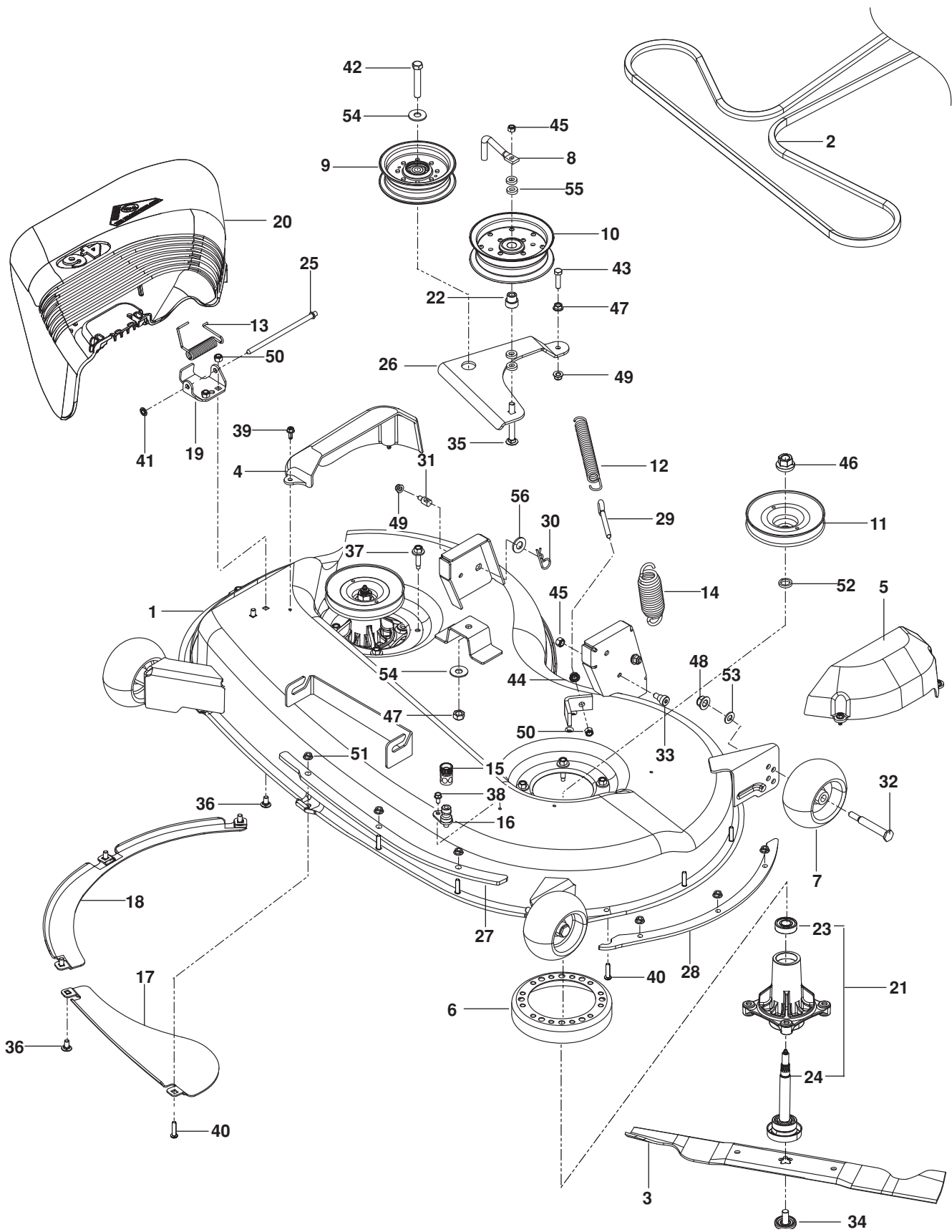


WHEELS AND TIRES

ITEM	PART NO.	QTY.	DESCRIPTION	ITEM	PART NO.	QTY.	DESCRIPTION
1..	581 19 87-02.....	2.....	WHEEL ASSY REAR 18 x 8.5-8	10..	539 10 25-35.....	2.....	CAP, GREASE
2..	581 19 92-02.....	2.....	CASTER TIRE ASSY 11 x 4.5	11..	539 11 57-49.....	2.....	PLUG, CASTER
3..	510 18 65-02.....	2.....	YOKE, CASTER BLK	12..	874 95 05-16.....	2.....	BOLT ⁵ / ₁₆ -18 x 1 NYLON PATCH
4..	539 11 56-38.....	2.....	ZERK	13..	721 40 81-04.....	2.....	BOLT ¹ / ₂ -13 x 6 ¹ / ₂ RD HD SQNK
5..	539 11 79-01.....	2.....	BUSHING, CASTER	14..	539 10 11-73.....	8.....	NUT ¹ / ₂ -20 LUG
6..	539 10 55-43.....	2.....	SPACER	15..	873 93 08-00.....	2.....	NUT ¹ / ₂ HEX CNTRLK
7..	581 26 92-01.....	4.....	SPACER ⁵ / ₁₆	16..	539 11 56-75.....	2.....	WASHER
8..	539 11 26-60.....	2.....	BEARING, FLANGED	17..	819 18 22-12.....	2.....	WASHER ¹ / ₂ FLAT
9..	539 11 57-47.....	2.....	SPRING, CASTER				

|

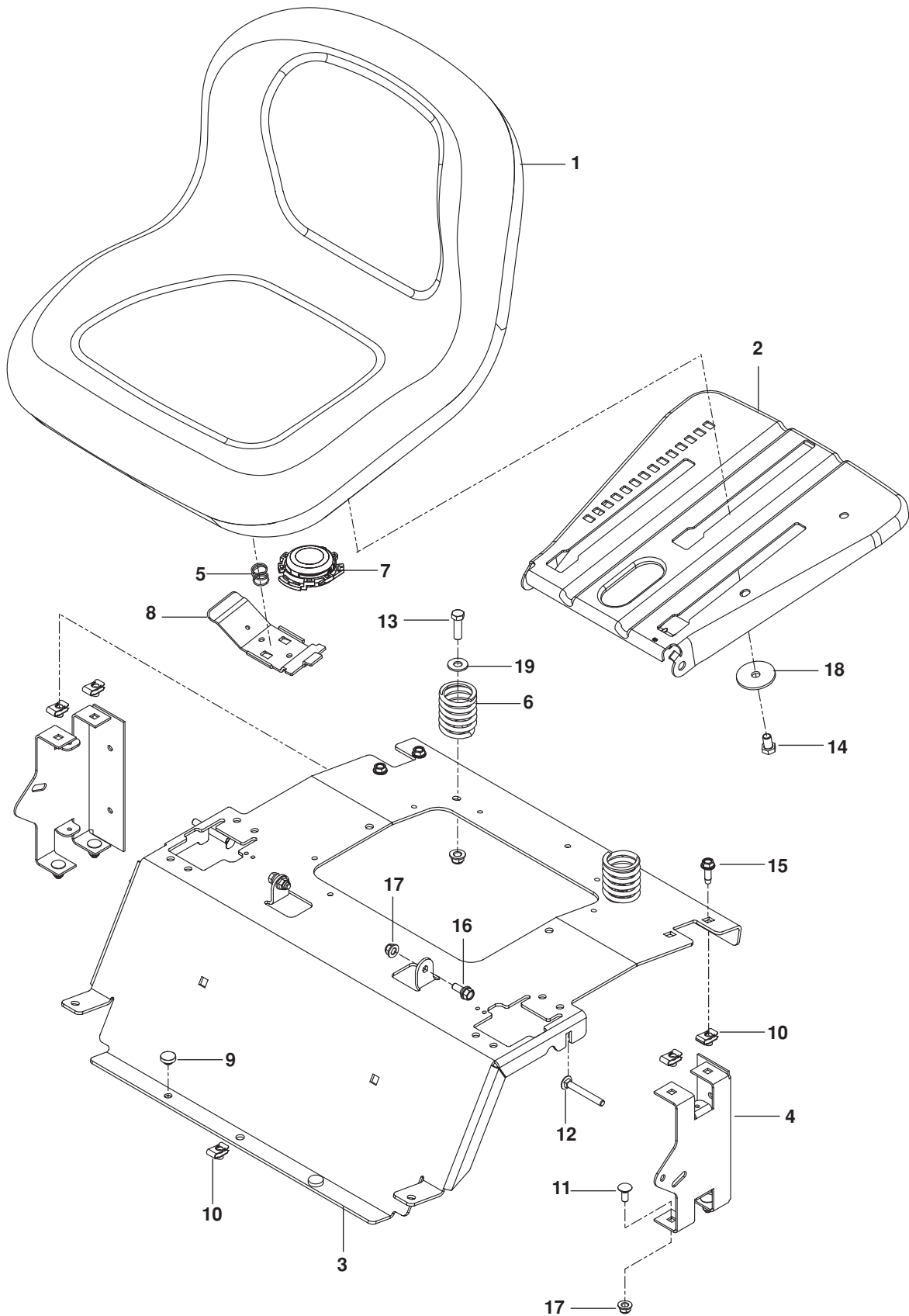
MOWER DECK / CUTTING DECK



MOWER DECK / CUTTING DECK

ITEM	PART NO.	QTY.	DESCRIPTION	ITEM	PART NO.	QTY.	DESCRIPTION
1..	522 53 39-05.....	1	DECK YEL	29..	539 11 55-74.....	1	EYEBOLT $\frac{5}{16}$ x $3\frac{1}{2}$
2..	539 11 72-45.....	1	BELT, DECK	30..	539 97 69-89.....	2	HAIRPIN
3..	532 40 53-80.....	2	BLADE, HI-LIFT	31..	532 19 51-61.....	2	STUD w/ANTI- ROTATE
4..	532 40 55-06.....	1	SHIELD, BELT RH	32..	532 19 34-06.....	3	BOLT $\frac{3}{8}$ -16 x $3\frac{5}{8}$ SHOULDER
5..	532 40 55-07.....	1	SHIELD, BELT LH	33..	539 11 36-21.....	2	BOLT $\frac{3}{8}$ -16 x $\frac{3}{8}$ SHOULDER
6..	532 17 44-93.....	2	STRIPPER BLK	34..	532 19 30-03.....	2	BOLT, WASHER
7..	532 17 48-73.....	3	WHEEL, GAUGE	35..	539 12 81-01.....	1	BOLT $\frac{3}{8}$ -16 x $2\frac{1}{4}$ RD HD SQNK
8..	522 62 97-01.....	1	KEEPER, BELT	36..	872 14 05-06.....	6	BOLT $\frac{5}{16}$ -18 x $\frac{3}{4}$ RD HD SQNK
9..	532 19 61-04.....	1	PULLEY, IDLER	37..	584 95 39-01.....	8	BOLT $\frac{5}{16}$ -18 WSH HD
10..	539 13 27-28.....	1	PULLEY, IDLER	38..	539 99 10-34.....	1	SCREW 10-24 x $\frac{5}{8}$ WSH HD
11..	539 11 39-62.....	2	PULLEY, DECK	39..	532 13 77-29.....	4	SCREW $\frac{1}{4}$ -20 x $\frac{5}{8}$ THDROLL
12..	539 12 09-20.....	1	SPRING, DECK BELT	40..	578 29 64-04.....	6	SCREW $\frac{1}{4}$ -20 BTN HD
13..	532 17 81-02.....	1	SPRING, TORSION	41..	532 11 04-52.....	1	PUSHNUT
14..	539 11 87-62.....	1	SPRING	42..	874 78 07-40.....	1	BOLT $\frac{7}{16}$ -14 x $2\frac{1}{2}$ HEX HD
15..	532 41 64-05.....	1	COUPLING, CONNECT	43..	874 78 05-20.....	1	BOLT $\frac{5}{16}$ -18 x $1\frac{1}{4}$ HEX HD
16..	532 41 55-98.....	1	PORT, WASHOUT	44..	539 99 05-85.....	2	NUT $\frac{5}{16}$ -18 HEX WHIZLK
17..	532 40 31-49.....	1	BAFFLE, FRONT	45..	539 20 02-82.....	3	NUT $\frac{3}{8}$ -16 HEX JAM NYLOC
18..	532 40 31-50.....	1	BAFFLE, FRONT RH	46..	532 40 02-34.....	2	NUT $\frac{9}{16}$ TOP CNTRLK
19..	532 19 25-57.....	1	BRACKET, DEFLECTOR	47..	539 11 91-24.....	1	NUT $\frac{7}{16}$ -14 HEX NYLOC
20..	532 40 53-57.....	1	SHIELD, DEFLECTOR	48..	873 90 06-00.....	3	NUT $\frac{3}{8}$ -16 FLG LK
21..	532 17 43-56.....	2	MANDREL	49..	539 11 28-99.....	3	NUT $\frac{5}{16}$ -18 HEX FLG NYLOC
22..	539 11 20-76.....	1	BUSHING, IDLER	50..	873 80 05-00.....	8	NUT $\frac{5}{16}$ -18 HEX NYLOC
23..	532 11 04-85.....	1	BEARING	51..	873 90 04-00.....	6	NUT $\frac{1}{4}$ -20 HEX FLG
24..	532 17 43-60.....	1	SHAFT	52..	532 18 76-90.....	2	WASHER, SPACER
25..	532 13 14-91.....	1	ROD, HINGE	53..	819 13 20-12.....	3	WASHER 12 GA
26..	574 68 90-02.....	1	ARM, IDLER	54..	539 10 48-64.....	2	WASHER $\frac{7}{16}$ FLT
27..	585 31 77-05.....	1	PLATE FRT	55..	539 10 95-62.....	4	WASHER $\frac{3}{8}$
28..	585 31 78-05.....	1	PLATE, SIDE	56..	819 21 21-13.....	2	WASHER $\frac{5}{8}$ SAE FLT

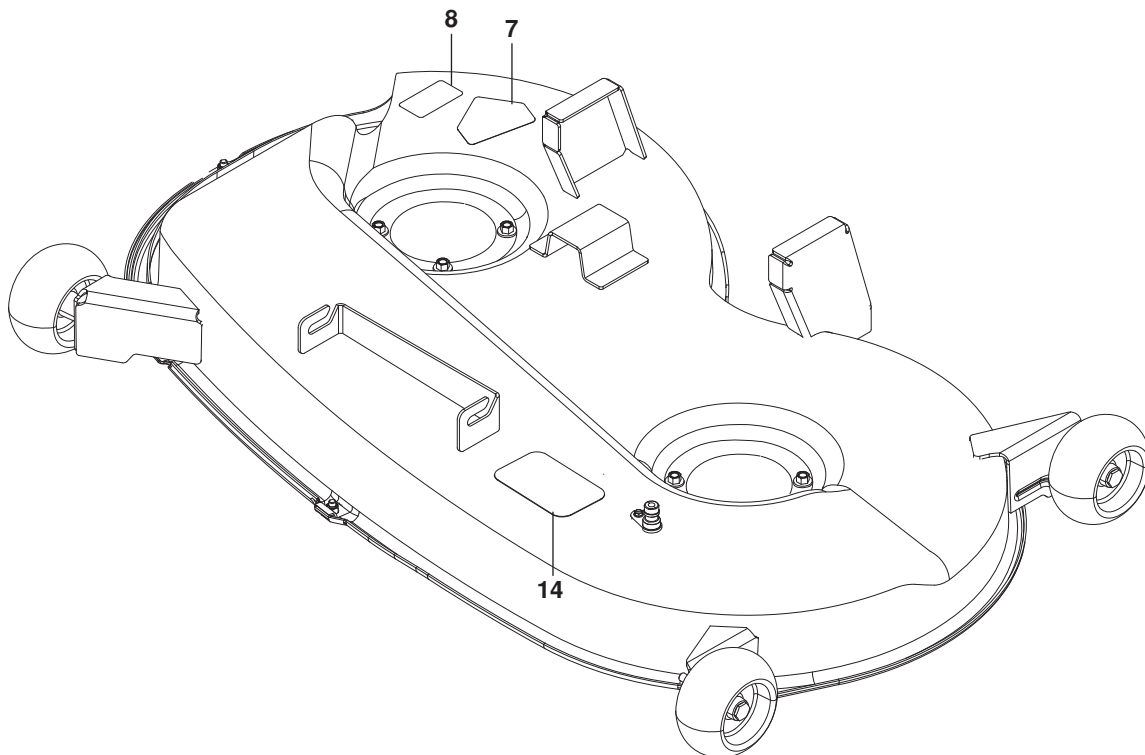
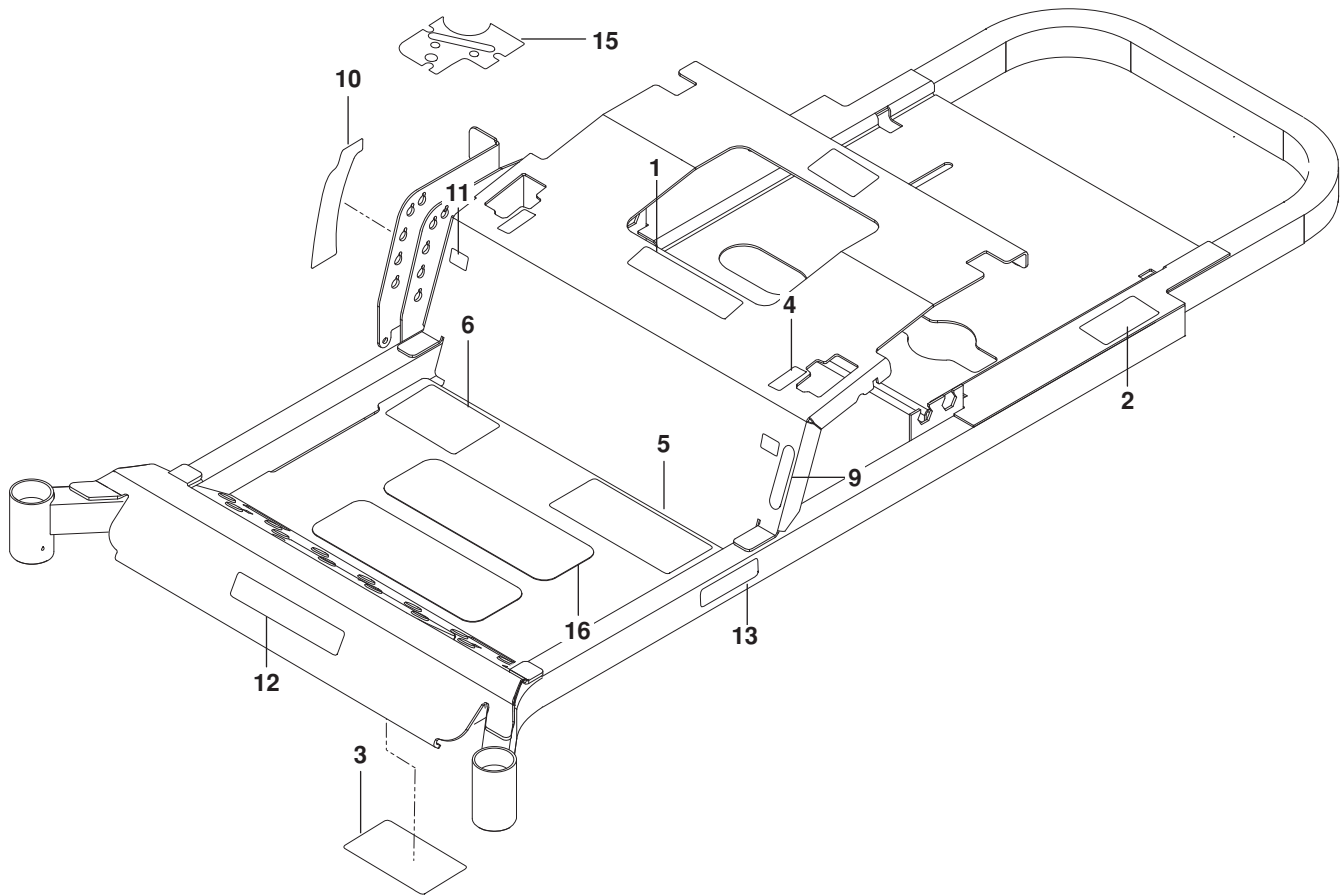
SEAT



SEAT

ITEM	PART NO.	QTY.	DESCRIPTION	ITEM	PART NO.	QTY.	DESCRIPTION
1..	532 40 66-25.....	1	SEAT BLK	11..	872 14 05-06.....	4	BOLT $\frac{5}{16}$ -18 x $\frac{3}{4}$ RD HD SQNK
2..	532 19 69-77.....	1	PAN, SEAT	12..	510 42 27-01.....	2	BOLT $\frac{5}{16}$ -18 x 2 $\frac{1}{2}$ RD HD SQNK
3..	577 26 05-02.....	1	SUPPORT, SEAT BLK	13..	874 78 06-20.....	2	BOLT $\frac{3}{8}$ -16 x 1 $\frac{1}{4}$ HEX HD
4..	580 30 82-02.....	2	SUPPORT, SEAT RR BLK	14..	874 78 06-10.....	1	BOLT $\frac{3}{8}$ -16 x $\frac{5}{8}$ HEX HD
5..	532 19 82-00.....	1	SPRING, LATCH	15..	539 10 74-75.....	4	BOLT $\frac{5}{16}$ -18 x $\frac{3}{4}$ THD FRM
6..	532 12 41-81.....	2	SPRING, SEAT	16..	539 11 03-03.....	2	BOLT $\frac{5}{16}$ -18 SHOULDER
7..	539 13 21-40.....	1	SWITCH, SEAT	17..	539 11 28-99.....	4	NUT $\frac{5}{16}$ -18 HEX FLG NYLOC
8..	532 19 76-61.....	1	HANDLE, SLIDE	18..	539 11 18-97.....	1	WASHER $\frac{3}{8}$ SPECIAL
9..	539 10 25-87.....	2	GROMMET, BUMPER	19..	819 14 16-14.....	2	WASHER $\frac{3}{8}$ STD FLT
10..	539 10 47-63.....	5	RETAINER, U TYPE				

DECALS

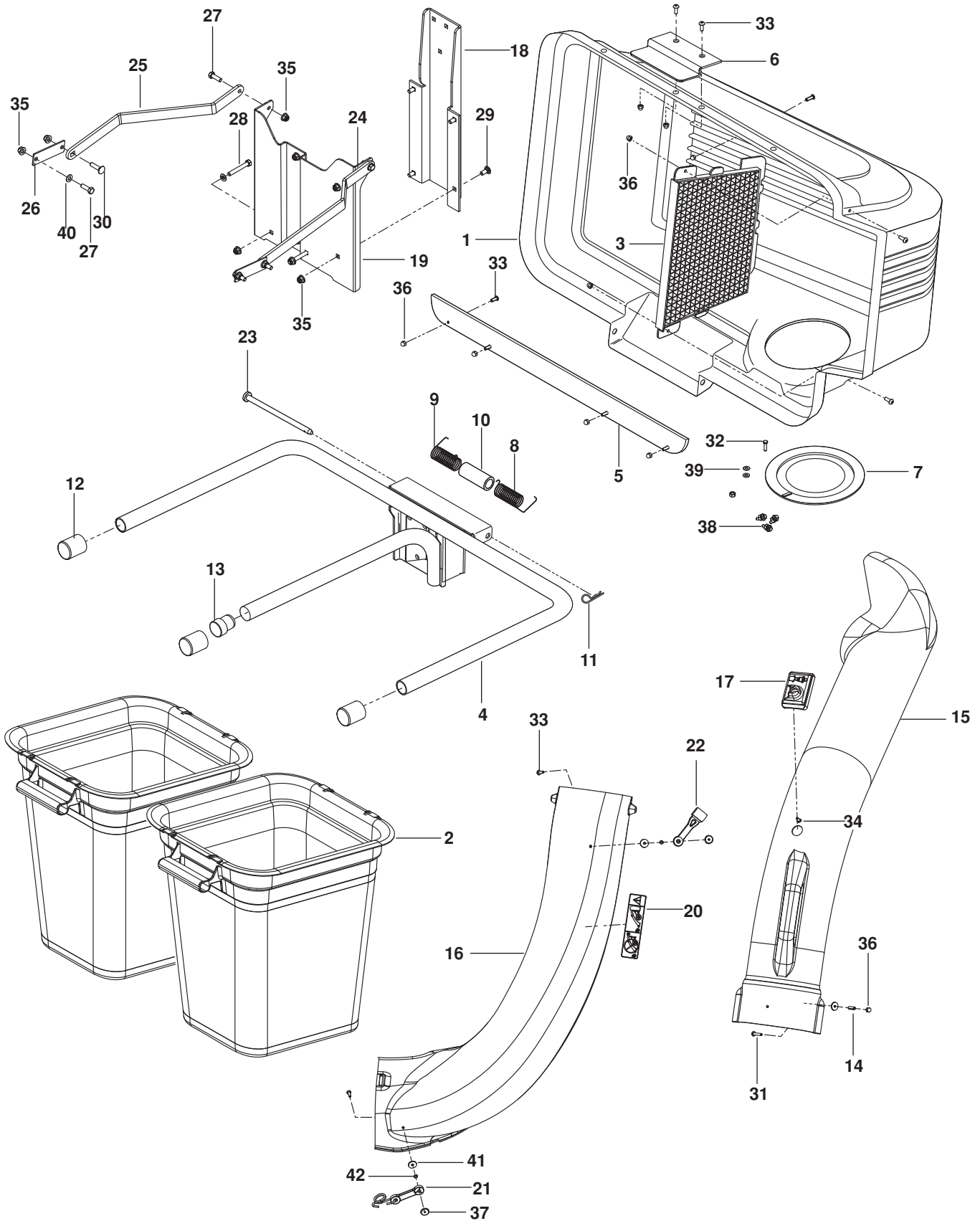


DECALS

ITEM	PART NO.	QTY.	DESCRIPTION	ITEM	PART NO.	QTY.	DESCRIPTION
1..	539 10 57-45.....	1	DECAL, BATTERY WARNING	9..	587 60 91-01.....	1	DECAL, PARK BRAKE
2..	539 10 83-85.....	1	DECAL, DO NOT TOW	10..	587 60 88-01.....	1	DECAL, HEIGHT
3..	539 10 98-97.....	1	DECAL, SERVICE	11..	587 60 89-01.....	2	DECAL, TRACKING
4..	587 60 90-01.....	2	DECAL, MOTION CONTROL	12..	587 60 95-01.....	1	DECAL, POULAN, FRT
5..	539 10 79-59.....	1	DECAL, WARNING	13..	587 61 23-01.....	1	DECAL, P46ZX
6..	587 49 41-01.....	1	DECAL, START	14..	510 24 02-01.....	1	DECAL, BELT ROUTING
7..	584 90 46-01.....	2	DECAL, BLADE WARNING	15..	587 60 87-01.....	1	DECAL, CONSOLE
8..	539 11 57-17.....	1	DECAL, DEFLECTOR	16..	539 97 77-78.....	2	ABRASIVE PAD

ACCESSORIES

BAGGER



ACCESSORIES

ITEM	PART NO.	QTY.	DESCRIPTION	ITEM	PART NO.	QTY.	DESCRIPTION
1..	539 11 11-39.....	1	COVER ASSY, COMPLETE	22..	539 10 80-88.....	1	LATCH, HOOD
2..	532 40 02-26.....	2	CONTAINER, SOFT BAG	23..	532 19 27-86.....	1	PIN, HINGE
3..	532 12 75-33.....	1	SCREEN, COVER	24..	522 85 45-02.....	1	STRAP, SUPPORT, LT
4..	532 17 97-46.....	1	FRAME, BAGGER	25..	522 85 44-02.....	1	STRAP, SUPPORT, RT
5..	532 15 50-42.....	1	STRIP, REINFORCEMENT	26..	523 11 28-02.....	2	PLATE
6..	532 13 08-95.....	1	LATCH HANDLE, COVER	27..	874 78 05-16.....	4	BOLT ⁵ / ₁₆ -18 x 1 HEX HD
7..	532 12 75-34.....	1	GASKET	28..	874 78 05-36.....	2	BOLT ⁵ / ₁₆ -18 x 2¼ HEX HD
8..	532 13 27-96.....	1	SPRING, COVER LH	29..	872 14 05-06.....	4	BOLT ⁵ / ₁₆ -18 x ¾ RD HD SQNK
9..	532 13 29-83.....	1	SPRING, COVER RH	30..	539 10 04-72.....	2	BOLT ⁵ / ₁₆ -18 x 1¼ RD HD SQNK
10..	532 13 32-35.....	1	SPACER, COVER	31..	539 10 80-83.....	1	SCREW #10-24 x 1⅛
11..	539 10 80-96.....	1	HAIRPIN, RETAINER	32..	539 10 63-12.....	4	SCREW #10-24 x ¾
12..	539 10 80-97.....	3	CAP, TUBING END	33..	539 97 69-52.....	12	SCREW #10-24 x ⅝
13..	522 80 13-01.....	1	SPACER PLUG	34..	539 10 80-81.....	1	SCREW #10-14 x ½
14..	539 10 80-85.....	1	SPACER, SPLIT	35..	539 11 28-99.....	12	NUT ⁵ / ₁₆ -18 HEX FLG NYLOC
15..	525 49 70-01.....	1	CHUTE, UPPER	36..	539 10 80-86.....	10	NUT #10-24 ACORN
16..	532 40 54-55.....	1	CHUTE, LOWER	37..	539 10 80-89.....	3	NUT #10-24 WELD PLATED
17..	539 10 80-82.....	1	INDICATOR, BAG DUMP	38..	539 97 69-77.....	4	NUT #10-24 HEX NYLOC
18..	522 85 47-02.....	1	BRACKET	39..	539 10 54-08.....	8	WASHER #10 FLAT
19..	522 85 46-02.....	1	MOUNT	40..	819 11 11-16.....	6	WASHER ⁵ / ₁₆ SAE FLAT
20..	539 10 81-63.....	1	DECAL, CATCHER	41..	539 10 80-84.....	4	WASHER ³ / ₁₆ x ¾ 16 GA
21..	539 10 81-94.....	2	LATCH ASSM, CHUTE	42..	539 10 95-52.....	3	WASHER ³ / ₁₆ LOCK

PoulanPRO

poulanpro.com

115 72 40-27 Rev C

2014-11-15