



STACKED STONE TO WOOD

GenStone products are designed to provide a realistic look of brick. Although installation of GenStone is much easier than traditional masonry applications, proper installation requires good planning and preparation. Each application varies, therefore we recommend you read this entire guide before beginning your project. When calculating the amount of GenStone needed for your project, remember that you will need additional pieces for unique cuts, such

as gables, end walls, or areas around windows. A minimum of a 5% additional product is recommended for timely completion of your job. Keep in mind, your leftover product can be used in other areas of your project too. It is also recommended that additional panels be purchased and scrap pieces be kept in case a repair is needed. Observe and Obey All Safety Rules and Recommendations set forth by Tool Manufacturers and Local, State, and Federal Authorities for Any Building Codes Applicable.

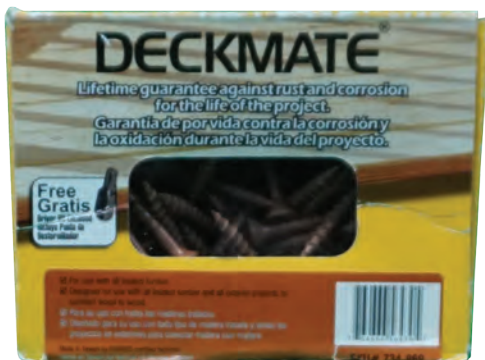
RECOMMENDED TOOLS

- Hand Saw
- Utility Knife
- Tape Measure
- Caulking Gun for a 10 oz Tube
- 1.625" Non-Corrosive Deck Screws
- 2.5" Non Corrosive Deck Screw (for Ledger)
- Screw Driver Bits
- Drill
- Framing Square
- Level
- Sandpaper

- Marker
- Gloves
- Safety Goggles/Glasses

OPTIONAL TOOLS

- Table Saw
- Compound Miter Saw
- Jig Saw
- Power Sander
- Rubber Mallet



Exterior Installations



Interior Installations

IMPORTANT STEPS TO CONSIDER

Damage of any kind resulting from inadequate or improper installation is not covered by warranty. For the best results, create random patterns with staggered joints. When planning your pattern, keep in mind that there are four patterns of panels. For the best results, avoid placing similar patterns side-by-side or directly above or below each other. To do this, sort out panels and lay them out before starting each row. Stagger the vertical seams and check that horizontal lines are uniform in width and spacing between panels. Check for level with each row. Make sure to use adequate sealants and/or finishes when joining other products and around penetrations, windows, or doors. GenStone Color Matched Caulking should be used between the shiplap edges to adhere panels together ensuring a good seal. GenStone Color Matched Touch-Up Paint should be used anywhere custom cuts are made.



PREPARATION

GenStone products are designed to be applied to a variety of substrates. Regardless of the substrate, the surface should be clean and free of debris. The positive shiplap edge always goes to the top side. As you layout your wall, you will fit your GenStone panels to the building, which will rarely be square or true. This will require small modifications to the panels (especially on your first/bottom row and corners). These adjustments can be made by trimming with a utility knife or by using sandpaper to ensure an accurate installation.



MAINTENANCE AND CLEANING

GenStone panels require very little maintenance and should be cleaned using warm water and mild soap. Water pressure from a garden hose and the use of a soft bristle brush is sufficient. Do not use a pressure washer, particulate or sand blasting device, or harsh chemicals. GenStone Panels have a clear coat sealant applied during the manufacturing process that should be reapplied every 5 years. Aquaseal Wet Look by Monochem is what was originally used. This must be a water based solvent free sealant to apply by manufacturers' instructions.



MEASURING AND MARKING

When using a circular or hand saw, it is best to measure and mark on the flat (back) side of the panel. Use a level or straight edge, pencil or marker, and a tape measure to mark the cut line. If you plan to use a table saw, it would be better to mark a point on the panel surface and use the flat side down on the table. All exposed cut edges should be sealed with GenStone Color Matched Touch-Up Paint.



CUTTING AND MEASURING

After marking your panels, you are ready to cut. To use a circular saw, you will need to protect the face of the panel as you hold it in place on a smooth flat table. Placing the panel flat side down works best when using a table saw. For cutting smaller pieces, a compound miter saw is best, but a hand saw or jigsaw will also work. For applications requiring cut outs such as hose bibs, electrical plates, or lights, mark from the back and then cut out using a keyhole saw, jig saw, or a hole saw on a drill. The manufacturing process leaves minor blemishes at the edge of the panels. These are easily corrected by trimming with a utility knife or sanding.



90° CORNERS

When installing a corner piece, mark a vertical line on both sides of the corner far enough away from the actual corner so they are visible for reference while test fitting. Starting at the most logical corner, test fit and trim the first corner for the best overall fit on both sides of the bend. Corners have a positive edge that goes to the top, and will always need some minor adjustments. This may require shaving minimal amounts from the back side of the panel. Be cautious not to reduce the thickness too much. For corners that are not 90°, as well as inside corners, mitering is an option. These areas can be lightly sanded and sealed with GenStone Color Matched Caulking and Touch-Up Paint.



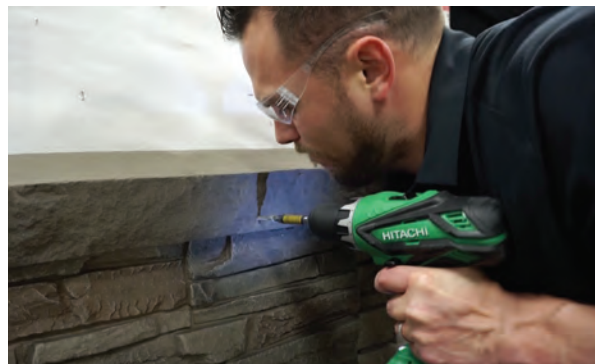
NEGATIVE SHIPLAP EDGES

Some installations may require a new negative shiplap edge to be cut into a piece. This can be done with a table saw, router or router table, or if neither are available, a circular saw preferably with a guide. Use a panel to determine the height (on the table saw) or depth (with a circular saw) to set the blade. This should be equal to the horizontal cut of the shiplap edge (approximately 1"). Once the blade is set, make the cut, then reset the height or depth to match the depth cut of the shiplap edge (approximately 1/2") effectively cutting a rectangle of material out of the corner. A router or router table can also be used to remove this material leaving the new negative shiplap edge.



LEDGERS

The screw used for shooting through the ledger will be longer than the screws used for panel installations in order to provide good bite into the substrate. We recommend 2.5" screws. To install a piece of ledger, apply adhesive to the back of the ledger and to the top of the positive shiplap edge of the panel that is already attached to the substrate. Then fit the negative shiplap edge of the ledger down onto the positive edge of the panel. Proceed by placing screws at an angle through the face of the ledger at both ends, countersinking the screw 1/8". Continue by shooting the longer screws in the center of the ledger through the face, countersinking 1/8". Once installation is complete, GenStone Color Matched Caulking should be used to cover any line between ledgers and to fill all screw holes. Use GenStone Color Matched Touch-Up Paint to blend colors.



FITTING PIECES TO FILL IN THE GAPS

Measure the gap from left to right. Measure from grey to grey. Do not measure the fingers. This represents the overall panel length that should be cut. When cutting a panel to fit, you will want to use the factory edges on each of the end and cut what needs to be removed from the middle of the panel. Be sure when making your cut to cut in a place that will be cutting through the bricks not the mortar. Mark your panel on the back side and cut to size. Once you have your panel cut down to the correct lengths, install to you substrate. Paint all exposed foam with GenStone Color Matched Touch-Up Paint. Install as previously directed.



CAULKING

Surfaces must be clean, frost-free, and free of oil, grease, or any other contaminants. Avoid contact with alcohol and solvent cleaners while curing. For the best results, apply a thin bead of caulking, not to exceed 1/2" in thickness, to the positive shiplap edge and behind each of the finger tabs. Fill screw holes with GenStone Color Matched Caulking. Some stones will be a different color than the filler. Use GenStone Color Matched Touch-Up Paint to blend the area to the correct color. Recommended installation temperatures are 40° - 100° F. The curing process can take up to 2 weeks.

WINDOWS, DOORS, & ROOF LINES

GenStone Trim or J-channel is recommended around all openings. Secure panel deep enough to protect edge and cover exposed edges with GenStone Color Matched Touch-Up Paint.

REPAIRING MINOR DAMAGE

Minor damage to GenStone products can be repaired by painting over the damaged area with GenStone Color Matched Touch Up Paint. GenStone Color Matched Caulking or an exterior grade filler can be used on larger areas needing repair. Blend the area with GenStone Color Match Touch-Up Paint to match existing color.



APPLYING TO WOOD

This method of applications would be used over plywood, OSB, or any other wood siding product. GenStone must be installed onto a surface that is flat. After applying a moisture barrier (per manufacturer's instructions) use 2.5" exterior grade non-corrosive deck screws to attach the panels. Longer screws are needed for installing ledgers. To begin the layout, use a level and chalk line to mark a line across the substrate at or above the top edge of your bottom row of panels. This will give you a reference as you run your panels and allow you to keep your project framing square. Repeating these steps as you progress up the wall will allow you to make any necessary adjustments and maintain an accurate installation. Begin your installation in the lower left corner and proceed to the right down the wall in a single row. If you are using GenStone 90° Corners, start by fitting the corner first and then the panel next to it for your first row. It is critical that the first row be as level and square as possible because all other panels build from this row. Shoot non-corrosive deck screws into the positive shiplap edge about every 8", countersinking them up to 1/8" deep. Starting about 1" from the bottom of the panel, shoot 3 or 4 screws evenly and at an upward angle through the face of the panel. Place screws in the shadows of the panel near a grout line. Fill screw holes with GenStone Color Matched Caulking when complete. Use GenStone Color Matched Touch-Up Paint to blend any area where the caulking is noticeable. Apply a 1/4" bead of GenStone Color Match Caulking to all positive edges to ensure a watertight barrier.





APPLYING TO CONCRETE

GenStone products are designed to provide a realistic look of stone, rock, or brick. Although installation of GenStone is much easier than traditional masonry applications, proper installation requires good planning and preparation. Each application varies, therefore we recommend you read this entire guide before beginning your project. When calculating the amount of GenStone needed for your project, remember that

you will need additional pieces for unique cuts, such as gables, end walls, or areas around windows. A minimum of a 5% additional product is recommended for timely completion of your job. Keep in mind, your left over product can be used in other areas of your project to. It is also recommended that additional panels be purchased and scrap pieces be kept in case a repair is needed.

RECOMMENDED TOOLS

- Hand Saw
- Utility Knife
- Tape Measure
- Caulking Gun for a 10 oz Tube
- Tapcon Screws
- Masonry Screw Driver Bits
- Drill
- Framing Square
- Level
- Sandpaper
- Marker

- Gloves
- Safety Goggles/Glasses

OPTIONAL TOOLS

- Table Saw
- Compound Miter Saw
- Jig Saw
- Power Sander
- Rubber Mallet



IMPORTANT STEPS TO CONSIDER

Damage of any kind resulting from inadequate or improper installation is not covered by warranty. For the best results, create random patterns with staggered joints. When planning your pattern, keep in mind that there are four patterns of panels. For the best results, avoid placing similar patterns side-by-side or directly above or below each other. To do this, sort out panels and lay them out before starting each row. Stagger the vertical seams and check that horizontal lines are uniform in width and spacing between panels. Check for level with each row. Make sure to use adequate sealants and/or finishes when joining other products and around penetrations, windows, or doors. GenStone Color Matched Caulking should be used between the shiplap edges to adhere panels together ensuring a good seal. GenStone Color Matched Touch-Up Paint should be used anywhere custom cuts are made.



PREPARATION

GenStone products are designed to be applied to a variety of substrates. Regardless of the substrate, the surface should be clean and free of debris. The positive shiplap edge always goes to the top side. As you layout your wall, you will fit your GenStone panels to the building, which will rarely be square or true. This will require small modifications to the panels (especially on your first/bottom row and corners). These adjustments can be made by trimming with a utility knife or by using sandpaper to ensure an accurate installation.



MAINTENANCE AND CLEANING

GenStone panels require very little maintenance and should be cleaned using warm water and mild soap. Water pressure from a garden hose and the use of a soft bristle brush is sufficient. Do not use a pressure washer, particulate or sand blasting device, or harsh chemicals. GenStone Panels have a clear coat sealant applied during the manufacturing process that should be reapplied every 5 years. Aquaseal Wet Look by Monochem is what was originally used. This must be a water based solvent free sealant to apply by manufacturers' instructions.



MEASURING AND MARKING

When using a circular or hand saw, it is best to measure and mark on the flat (back) side of the panel. Use a level or straight edge, pencil or marker, and a tape measure to mark the cut line. If you plan to use a table saw, it would be better to mark a point on the panel surface and use the flat side down on the table. All exposed cut edges should be sealed with GenStone Color Matched Touch-Up Paint.



CUTTING AND MEASURING

After marking your panels, you are ready to cut. To use a circular saw, you will need to protect the face of the panel as you hold it in place on a smooth flat table. Placing the panel flat side down works best when using a table saw. For cutting smaller pieces, a compound miter saw is best, but a hand saw or jigsaw will also work. For applications requiring cut outs such as hose bibs, electrical plates, or lights, mark from the back and then cut out using a keyhole saw, jig saw, or a hole saw on a drill. The manufacturing process leaves minor blemishes at the edge of the panels. These are easily corrected by trimming with a utility knife or sanding.



90° CORNERS

When installing a corner piece, mark a vertical line on both sides of the corner far enough away from the actual corner so they are visible for reference while test fitting. Starting at the most logical corner, test fit and trim the first corner for the best overall fit on both sides of the bend. Corners have a positive edge that goes to the top, and will always need some minor adjustments. This may require shaving minimal amounts from the back side of the panel. Be cautious not to reduce the thickness too much. For corners that are not 90°, as well as inside corners, mitering is an option. These areas can be lightly sanded and sealed with GenStone Color Matched Caulking and Touch-Up Paint.



NEGATIVE SHIPLAP EDGES

Some installations may require a new negative shiplap edge to be cut into a piece. This can be done with a table saw, router or router table, or if neither are available, a circular saw preferably with a guide. Use a panel to determine the height (on the table saw) or depth (with a circular saw) to set the blade. This should be equal to the horizontal cut of the shiplap edge (approximately 1"). Once the blade is set, make the cut, then reset the height or depth to match the depth cut of the shiplap edge (approximately 1/2") effectively cutting a rectangle of material out of the corner. A router or router table can also be used to remove this material leaving the new negative shiplap edge.



LEDGERS

The screw used for shooting through the ledger will be longer than the screws used for panel installations in order to provide good bite into the substrate. We recommend 2.5" screws. To install a piece of ledger, apply adhesive to the back of the ledger and to the top of the positive shiplap edge of the panel that is already attached to the substrate. Then fit the negative shiplap edge of the ledger down onto the positive edge of the panel. Proceed by placing screws at an angle through the face of the ledger at both ends, countersinking the screw 1/8". Continue by shooting the longer screws in the center of the ledger through the face, countersinking 1/8". Once installation is complete, GenStone Color Matched Caulking should be used to cover any line between ledgers and to fill all screw holes. Use GenStone Color Matched Touch-Up Paint to blend colors.



FITTING PIECES TO FILL IN THE GAPS

Measure the gap from left to right. Measure from grey to grey. Do not measure the fingers. This represents the overall panel length that should be cut. When cutting a panel to fit, you will want to use the factory edges on each of the end and cut what needs to be removed from the middle of the panel. Be sure when making your cut to cut in a place that will be cutting through the bricks not the mortar. Mark your panel on the back side and cut to size. Once you have your panel cut down to the correct lengths, install to you substrate. Paint all exposed foam with GenStone Color Matched Touch-Up Paint. Install as previously directed.



CAULKING

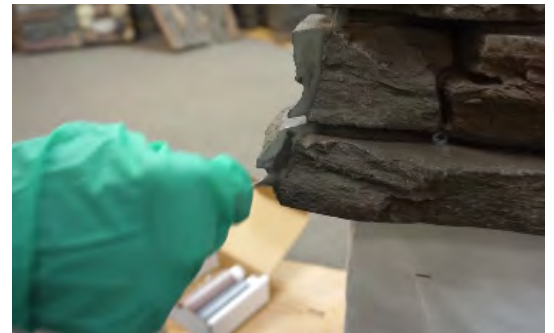
Surfaces must be clean, frost-free, and free of oil, grease, or any other contaminants. Avoid contact with alcohol and solvent cleaners while curing. For the best results, apply a thin bead of caulking, not to exceed 1/2" in thickness, to the positive shiplap edge and behind each of the finger tabs. Fill screw holes with GenStone Color Matched Caulking. Some stones will be a different color than the filler. Use GenStone Color Matched Touch-Up Paint to blend the area to the correct color. Recommended installation temperatures are 40° - 100° F. The curing process can take up to 2 weeks.

WINDOWS, DOORS, & ROOF LINES

GenStone Trim or J-channel is recommended around all openings. Secure panel deep enough to protect edge and cover exposed edges with GenStone Color Matched Touch-Up Paint.

REPAIRING MINOR DAMAGE

Minor damage to GenStone products can be repaired by painting over the damaged area with GenStone Color Matched Touch Up Paint. GenStone Color Matched Caulking or an exterior grade filler can be used on larger areas needing repair. Blend the area with GenStone Color Match Touch-Up Paint to match existing color.



APPLYING TO CONCRETE

Always keep the positive edge of the shiplap at the top. Using a polyurethane safe, premium construction adhesive (PL-200 or PL-300 is recommended) on the back of the panels, apply 3/8" bead in a tight "S" pattern. Using your hammer drill, make a pilot hole before screwing in the concrete anchors. Place the panel onto the wall and using concrete screws (Tapcons), screw through the positive shiplap edge. One screw in each corner of the panel is adequate. Countersink screw heads 1/8" and fill with GenStone Color Matched Caulking and Touch-Up Paint. The screws will hold the panel in place while the adhesive sets. Screws should be of sufficient length to penetrate the panel and bite into your substrate to hold tight.





APPLYING TO BRICK

GenStone products are designed to provide a realistic look of stone, rock, or brick. Although installation of GenStone is much easier than traditional masonry applications, proper installation requires good planning and preparation. Each application varies, therefore we recommend you read this entire guide before beginning your project. When calculating the amount of GenStone needed for your project, remember that

you will need additional pieces for unique cuts, such as gables, end walls, or areas around windows. A minimum of a 5% additional product is recommended for timely completion of your job. Keep in mind, your left over product can be used in other areas of your project to. It is also recommended that additional panels be purchased and scrap pieces be kept in case a repair is needed.

RECOMMENDED TOOLS

- Hand Saw
- Utility Knife
- Tape Measure
- Caulking Gun for a 10 oz Tube
- Tapcon Screws
- Masonry Screw Driver Bits
- Drill
- Framing Square
- Level
- Sandpaper
- Marker

- Gloves
- Safety Goggles/Glasses

OPTIONAL TOOLS

- Table Saw
- Compound Miter Saw
- Jig Saw
- Power Sander
- Rubber Mallet



IMPORTANT STEPS TO CONSIDER

Damage of any kind resulting from inadequate or improper installation is not covered by warranty. For the best results, create random patterns with staggered joints. When planning your pattern, keep in mind that there are four patterns of panels. For the best results, avoid placing similar patterns side-by-side or directly above or below each other. To do this, sort out panels and lay them out before starting each row. Stagger the vertical seams and check that horizontal lines are uniform in width and spacing between panels. Check for level with each row. Make sure to use adequate sealants and/or finishes when joining other products and around penetrations, windows, or doors. GenStone Color Matched Caulking should be used between the shiplap edges to adhere panels together ensuring a good seal. GenStone Color Matched Touch-Up Paint should be used anywhere custom cuts are made.



PREPARATION

GenStone products are designed to be applied to a variety of substrates. Regardless of the substrate, the surface should be clean and free of debris. The positive shiplap edge always goes to the top side. As you layout your wall, you will fit your GenStone panels to the building, which will rarely be square or true. This will require small modifications to the panels (especially on your first/bottom row and corners). These adjustments can be made by trimming with a utility knife or by using sandpaper to ensure an accurate installation.



MAINTENANCE AND CLEANING

GenStone panels require very little maintenance and should be cleaned using warm water and mild soap. Water pressure from a garden hose and the use of a soft bristle brush is sufficient. Do not use a pressure washer, particulate or sand blasting device, or harsh chemicals. GenStone Panels have a clear coat sealant applied during the manufacturing process that should be reapplied every 5 years. Aquaseal Wet Look by Monochem is what was originally used. This must be a water based solvent free sealant to apply by manufacturer's instructions.



MEASURING AND MARKING

When using a circular or hand saw, it is best to measure and mark on the flat (back) side of the panel. Use a level or straight edge, pencil or marker, and a tape measure to mark the cut line. If you plan to use a table saw, it would be better to mark a point on the panel surface and use the flat side down on the table. All exposed cut edges should be sealed with GenStone Color Matched Touch-Up Paint.



CUTTING AND MEASURING

After marking your panels, you are ready to cut. To use a circular saw, you will need to protect the face of the panel as you hold it in place on a smooth flat table. Placing the panel flat side down works best when using a table saw. For cutting smaller pieces, a compound miter saw is best, but a hand saw or jigsaw will also work. For applications requiring cut outs such as hose bibs, electrical plates, or lights, mark from the back and then cut out using a keyhole saw, jig saw, or a hole saw on a drill. The manufacturing process leaves minor blemishes at the edge of the panels. These are easily corrected by trimming with a utility knife or sanding.



90° CORNERS

When installing a corner piece, mark a vertical line on both sides of the corner far enough away from the actual corner so they are visible for reference while test fitting. Starting at the most logical corner, test fit and trim the first corner for the best overall fit on both sides of the bend. Corners have a positive edge that goes to the top, and will always need some minor adjustments. This may require shaving minimal amounts from the back side of the panel. Be cautious not to reduce the thickness too much. For corners that are not 90°, as well as inside corners, mitering is an option. These areas can be lightly sanded and sealed with GenStone Color Matched Caulking and Touch-Up Paint.



NEGATIVE SHIPLAP EDGES

Some installations may require a new negative shiplap edge to be cut into a piece. This can be done with a table saw, router or router table, or if neither are available, a circular saw preferably with a guide. Use a panel to determine the height (on the table saw) or depth (with a circular saw) to set the blade. This should be equal to the horizontal cut of the shiplap edge (approximately 1"). Once the blade is set, make the cut, then reset the height or depth to match the depth cut of the shiplap edge (approximately 1/2") effectively cutting a rectangle of material out of the corner. A router or router table can also be used to remove this material leaving the new negative shiplap edge.



LEDGERS

The screw used for shooting through the ledger will be longer than the screws used for panel installations in order to provide good bite into the substrate. We recommend 2.5" screws. To install a piece of ledger, apply adhesive to the back of the ledger and to the top of the positive shiplap edge of the panel that is already attached to the substrate. Then fit the negative shiplap edge of the ledger down onto the positive edge of the panel. Proceed by placing screws at an angle through the face of the ledger at both ends, countersinking the screw 1/8". Continue by shooting the longer screws in the center of the ledger through the face, countersinking 1/8". Once installation is complete, GenStone Color Matched Caulking should be used to cover any line between ledgers and to fill all screw holes. Use GenStone Color Matched Touch-Up Paint to blend colors.



FITTING PIECES TO FILL IN THE GAPS

Measure the gap from left to right. Measure from grey to grey. Do not measure the fingers. This represents the overall panel length that should be cut. When cutting a panel to fit, you will want to use the factory edges on each of the end and cut what needs to be removed from the middle of the panel. Be sure when making your cut to cut in a place that will be cutting through the bricks not the mortar. Mark your panel on the back side and cut to size. Once you have your panel cut down to the correct lengths, install to you substrate. Paint all exposed foam with GenStone Color Matched Touch-Up Paint. Install as previously directed.



CAULKING

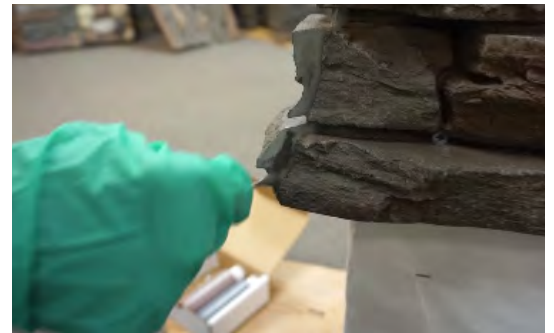
Surfaces must be clean, frost-free, and free of oil, grease, or any other contaminants. Avoid contact with alcohol and solvent cleaners while curing. For the best results, apply a thin bead of caulking, not to exceed 1/2" in thickness, to the positive shiplap edge and behind each of the finger tabs. Fill screw holes with GenStone Color Matched Caulking. Some stones will be a different color than the filler. Use GenStone Color Matched Touch-Up Paint to blend the area to the correct color. Recommended installation temperatures are 40° - 100° F. The curing process can take up to 2 weeks.

WINDOWS, DOORS, & ROOF LINES

GenStone Trim or J-channel is recommended around all openings. Secure panel deep enough to protect edge and cover exposed edges with GenStone Color Matched Touch-Up Paint.

REPAIRING MINOR DAMAGE

Minor damage to GenStone products can be repaired by painting over the damaged area with GenStone Color Matched Touch Up Paint. GenStone Color Matched Caulking or an exterior grade filler can be used on larger areas needing repair. Blend the area with GenStone Color Match Touch-Up Paint to match existing color.



APPLYING TO BRICK

Always keep the positive edge of the shiplap at the top. Using a polyurethane safe, premium construction adhesive (PL-200 or PL-300 is recommended) on the back of the panels, apply 3/8" bead in a tight "S" pattern. Using your hammer drill, make a pilot hole before screwing in the concrete anchors. Place the panel onto the wall and using concrete screws (Tapcons), screw through the positive shiplap edge. One screw in each corner of the panel is adequate. Countersink screw heads 1/8" and fill with GenStone Color Matched Caulking and Touch-Up Paint. The screws will hold the panel in place while the adhesive sets. Screws should be of sufficient length to penetrate the panel and bite into your substrate to hold tight.



APPLYING TO GYPSUM BOARD

GenStone products are designed to provide a realistic look of stone, rock, or brick. Although installation of GenStone is much easier than traditional masonry applications, proper installation requires good planning and preparation. Each application varies, therefore we recommend you read this entire guide before beginning your project. When calculating the amount of GenStone needed for your project, remember that

you will need additional pieces for unique cuts, such as gables, end walls, or areas around windows. A minimum of a 5% additional product is recommended for timely completion of your job. Keep in mind, your left over product can be used in other areas of your project too. It is also recommended that additional panels be purchased and scrap pieces be kept in case a repair is needed.

RECOMMENDED TOOLS

- Hand Saw
- Utility Knife
- Tape Measure
- Caulking Gun for a 10 oz Tube
- 6" x 1.25" Drywall Screws
- Screw Driver Bits
- Drill
- Framing Square
- Level
- Sandpaper
- Marker

- Gloves
- Safety Goggles/Glasses

OPTIONAL TOOLS

- Table Saw
- Compound Miter Saw
- Jig Saw
- Power Sander
- Rubber Mallet



Interior Installations

IMPORTANT STEPS TO CONSIDER

Damage of any kind resulting from inadequate or improper installation is not covered by warranty. For the best results, create random patterns with staggered joints. When planning your pattern, keep in mind that there are four patterns of panels. For the best results, avoid placing similar patterns side-by-side or directly above or below each other. To do this, sort out panels and lay them out before starting each row. Stagger the vertical seams and check that horizontal lines are uniform in width and spacing between panels. Check for level with each row. Make sure to use adequate sealants and/or finishes when joining other products and around penetrations, windows, or doors. GenStone Color Matched Caulking should be used between the shiplap edges to adhere panels together ensuring a good seal. GenStone Color Matched Touch-Up Paint should be used anywhere custom cuts are made.



PREPARATION

GenStone products are designed to be applied to a variety of substrates. Regardless of the substrate, the surface should be clean and free of debris. The positive shiplap edge always goes to the top side. As you layout your wall, you will fit your GenStone panels to the building, which will rarely be square or true. This will require small modifications to the panels (especially on your first/bottom row and corners). These adjustments can be made by trimming with a utility knife or by using sandpaper to ensure an accurate installation.



MAINTENANCE AND CLEANING

GenStone panels require very little maintenance and should be cleaned using warm water and mild soap. Water pressure from a garden hose and the use of a soft bristle brush is sufficient. Do not use a pressure washer, particulate or sand blasting device, or harsh chemicals. GenStone Panels have a clear coat sealant applied during the manufacturing process that should be reapplied every 5 years. Aquaseal Wet Look by Monochem is what was originally used. This must be a water based solvent free sealant to apply by manufacturers' instructions.



MEASURING AND MARKING

When using a circular or hand saw, it is best to measure and mark on the flat (back) side of the panel. Use a level or straight edge, pencil or marker, and a tape measure to mark the cut line. If you plan to use a table saw, it would be better to mark a point on the panel surface and use the flat side down on the table. All exposed cut edges should be sealed with GenStone Color Matched Touch-Up Paint.



CUTTING AND MEASURING

After marking your panels, you are ready to cut. To use a circular saw, you will need to protect the face of the panel as you hold it in place on a smooth flat table. Placing the panel flat side down works best when using a table saw. For cutting smaller pieces, a compound miter saw is best, but a hand saw or jigsaw will also work. For applications requiring cut outs such as hose bibs, electrical plates, or lights, mark from the back and then cut out using a keyhole saw, jig saw, or a hole saw on a drill. The manufacturing process leaves minor blemishes at the edge of the panels. These are easily corrected by trimming with a utility knife or sanding.



90° CORNERS

When installing a corner piece, mark a vertical line on both sides of the corner far enough away from the actual corner so they are visible for reference while test fitting. Starting at the most logical corner, test fit and trim the first corner for the best overall fit on both sides of the bend. Corners have a positive edge that goes to the top, and will always need some minor adjustments. This may require shaving minimal amounts from the back side of the panel. Be cautious not to reduce the thickness too much. For corners that are not 90°, as well as inside corners, mitering is an option. These areas can be lightly sanded and sealed with GenStone Color Matched Caulking and Touch-Up Paint.



NEGATIVE SHIPLAP EDGES

Some installations may require a new negative shiplap edge to be cut into a piece. This can be done with a table saw, router or router table, or if neither are available, a circular saw preferably with a guide. Use a panel to determine the height (on the table saw) or depth (with a circular saw) to set the blade. This should be equal to the horizontal cut of the shiplap edge (approximately 1"). Once the blade is set, make the cut, then reset the height or depth to match the depth cut of the shiplap edge (approximately 1/2") effectively cutting a rectangle of material out of the corner. A router or router table can also be used to remove this material leaving the new negative shiplap edge.



LEDGERS

The screw used for shooting through the ledger will be longer than the screws used for panel installations in order to provide good bite into the substrate. We recommend 2.5" screws. To install a piece of ledger, apply adhesive to the back of the ledger and to the top of the positive shiplap edge of the panel that is already attached to the substrate. Then fit the negative shiplap edge of the ledger down onto the positive edge of the panel. Proceed by placing screws at an angle through the face of the ledger at both ends, countersinking the screw 1/8". Continue by shooting the longer screws in the center of the ledger through the face, countersinking 1/8". Once installation is complete, GenStone Color Matched Caulking should be used to cover any line between ledgers and to fill all screw holes. Use GenStone Color Matched Touch-Up Paint to blend colors.



FITTING PIECES TO FILL IN THE GAPS

Measure the gap from left to right. Measure from grey to grey. Do not measure the fingers. This represents the overall panel length that should be cut. When cutting a panel to fit, you will want to use the factory edges on each of the end and cut what needs to be removed from the middle of the panel. Be sure when making your cut to cut in a place that will be cutting through the bricks not the mortar. Mark your panel on the back side and cut to size. Once you have your panel cut down to the correct lengths, install to you substrate. Paint all exposed foam with GenStone Color Matched Touch-Up Paint. Install as previously directed.



CAULKING

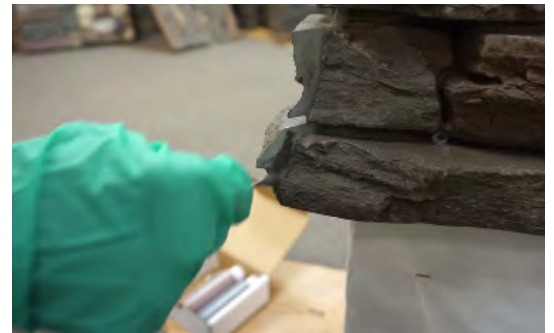
Surfaces must be clean, frost-free, and free of oil, grease, or any other contaminants. Avoid contact with alcohol and solvent cleaners while curing. For the best results, apply a thin bead of caulking, not to exceed 1/2" in thickness, to the positive shiplap edge and behind each of the finger tabs. Fill screw holes with GenStone Color Matched Caulking. Some stones will be a different color than the filler. Use GenStone Color Matched Touch-Up Paint to blend the area to the correct color. Recommended installation temperatures are 40° - 100° F. The curing process can take up to 2 weeks.

WINDOWS, DOORS, & ROOF LINES

GenStone Trim or J-channel is recommended around all openings. Secure panel deep enough to protect edge and cover exposed edges with GenStone Color Matched Touch-Up Paint.

REPAIRING MINOR DAMAGE

Minor damage to GenStone products can be repaired by painting over the damaged area with GenStone Color Matched Touch Up Paint. GenStone Color Matched Caulking or an exterior grade filler can be used on larger areas needing repair. Blend the area with GenStone Color Match Touch-Up Paint to match existing color.



APPLYING TO GYPSUM BOARD

Adhesive is not recommended for installation over gypsum board. Always keep the positive edge of the shiplap at the top. Drive drywall screws into the positive shiplap edge about every 8", countersinking them up to 1/8" deep. Starting about 1" from the bottom of the panel, drive 2 or 3 screws evenly and at an upward angle through the face of the panel. Place screws in the shadows of the panel near a grout line. Fill screw holes with GenStone Color Matched Caulking when complete. Use GenStone Color Matched Touch-Up Paint to blend any area where the caulking is noticeable. Apply a 1/4" bead of GenStone Color Match Caulking to all positive edges to ensure a watertight barrier.

