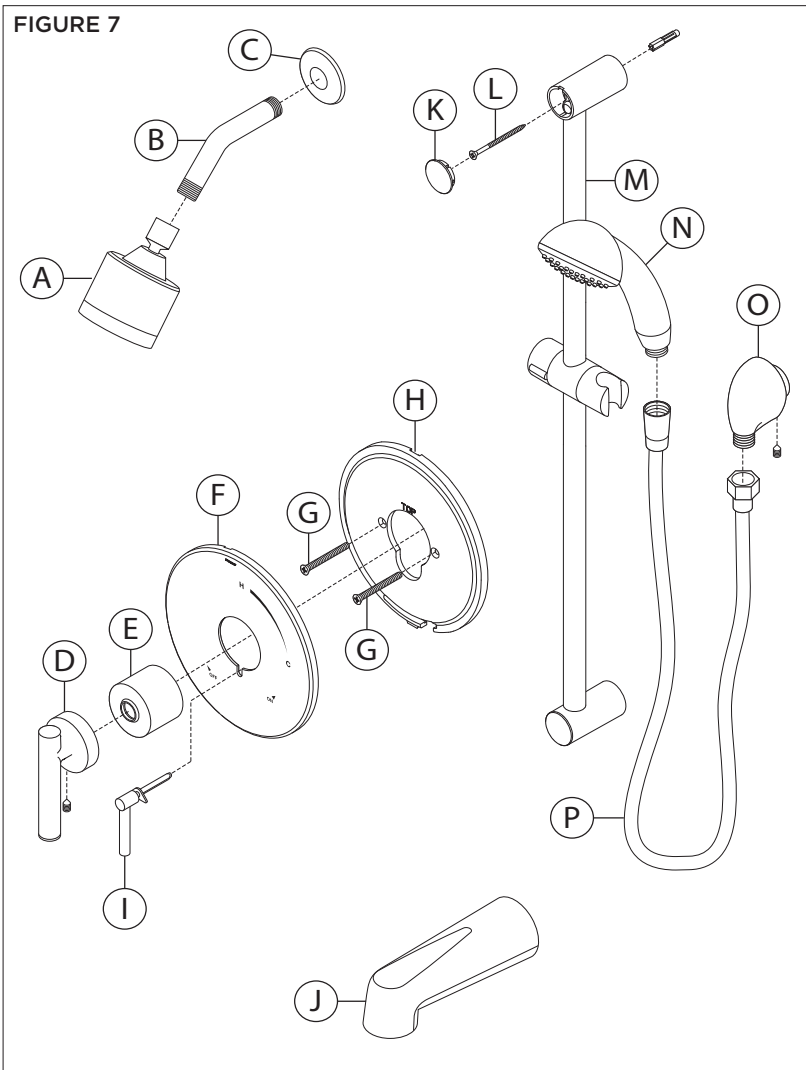


## 7. Parts Breakdown



Replacement Parts		
Item	Description	Part Number
A	Showerhead	352SH
B	Shower Arm	300S
C	Flange	300S
D	Standard Handle	T-242A
E	Dome Cover	T-19/20
F	Shower Escutcheon	<b>Brass:</b> RTS-009
G	Screws	<b>Plastic:</b> RTS-010
H	Mounting Plate	RTS-010
I	Diverter/Volume Control Handle	<b>Standard:</b> RTS-014 <b>Brass:</b> RTS-013
J	Tub Spout	067
K	Slide Bar	RA-009
L	Assembly	
M		
N	Hand Shower	EF-100
O	Wall Elbow	EF-105
P	60" Hose	RTS-045

### Notes:

- 1) Append appropriate suffix for premium finish.
- 2) Append appropriate flow rate to showerhead or hand shower for low flow.
- 3) Apply a bead of silicone around the perimeter of all shower trim installed flush to the finished wall. Leave opening on bottom of escutcheons for weep hole.
- 4) Apply plumber tape to all threaded connections.



\*Order in-line vacuum breaker (EF-109) for hand shower systems without dual checks.