

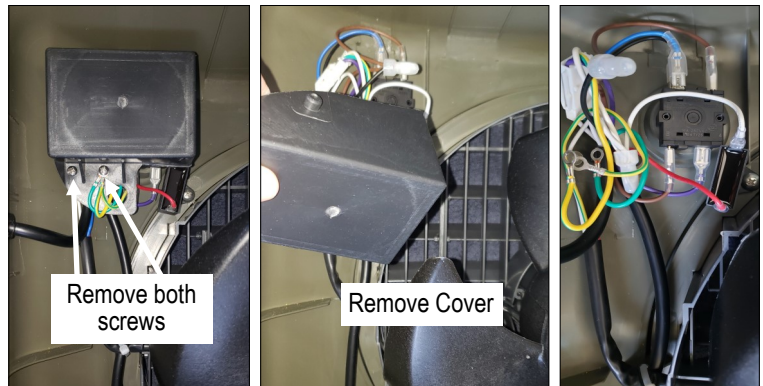
⚠️ WARNING Always unplug unit from power source before performing any maintenance. Failure to do so could result in serious injury, electrical shock or death. Ensure back access panel and all parts are securely fastened back in place and nothing is obstructing the fan blade prior to powering the unit up again. See warning label on back of cooler prior to servicing.



Suggested Tools:
#2 phillips screwdriver, flathead screwdriver

Ensure unit is turned **off** and **unplugged**.

- 1) Remove back panel from your cooler by removing the 2 phillips screws from the upper back side of the cooler. Push panel up and pull out bottom.
- 2) Remove both phillips screws from switch cover on upper left corner inside of cooler to expose switch.
- 3) Remove knob from outside front of cooler. Note: may need to lightly pry off with screwdriver.
- 4) Remove both phillips screws by switch stem.
- 5) Pull switch out through back side of cooler.
- 6) Take a picture of wire location and switch orientation for easy installation of new switch and knob.
- 7) Remove locking female spade clips by depressing tab on very tip of spade clip and pulling back. Repeat for all attached wires.
- 8) Switch is free to remove.



⚠️ Reverse steps to install new switch. Test new switch to ensure all functions work properly.

