



CAMBRIDGE MASK CO

PRO

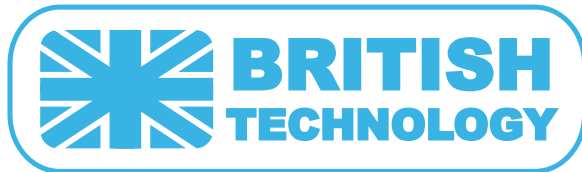
# ABOUT THE PRO MASK



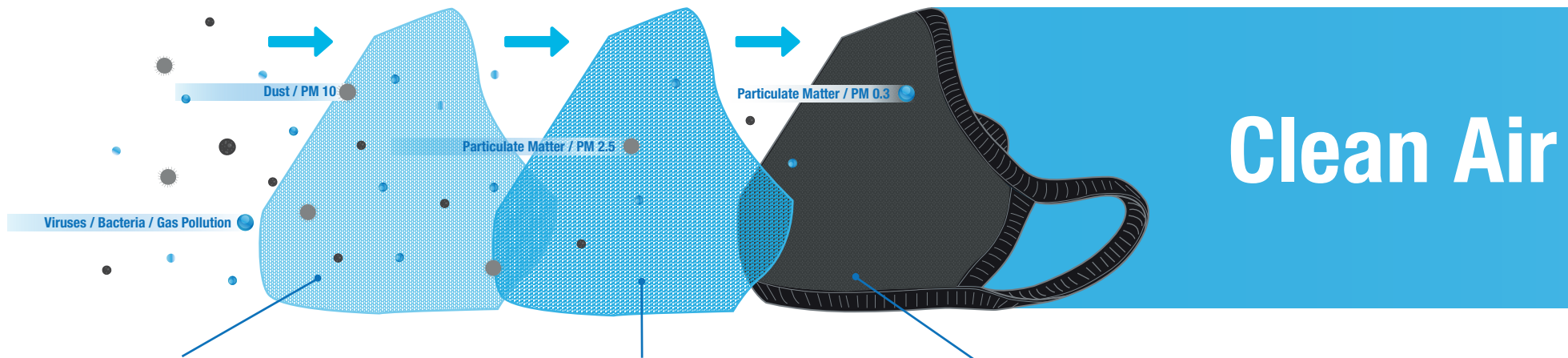
Engineered with UK military-grade filtration technology, Cambridge Mask™ respirators are half-face masks classified as personal protective equipment (PPE). The Cambridge PRO provides nearly 100% protection from particulate pollution such as PM10, PM2.5 and PM0.3.

Boasting a unique triple layer filtration system, the PRO mask also filters out 99.7% of bacteria and 99.6% of viruses from the air. Our masks are used globally by travellers, cyclists, urban residents, respiratory disease sufferers, and anyone wanting to reduce their exposure to potentially harmful pollutants.

# FILTER TECHNOLOGY



Our military-grade filtration material is uniquely treated with silver. This guards against 99.6% of viruses and kills 99.77% of bacteria on contact. Composed of three unique layers, the entire mask itself is the filter. It can be used for an average of 3-6 months. The circular plastic valve on the mask helps to reduce humidity and increase the wearer's comfort. The Cambridge Mask PRO filters air through three composite layers:



## 1. The Primary Filter Layer

This first layer of our pollution mask is designed to filter out larger particles such as dust and PM10. The material may be printed with different designs to make the Cambridge Mask PRO fashion friendly. When hand washing your mask, the pattern or dye cannot be removed.

## 2. The Three-Ply Micro Particulate Layer

This filter layer is designed to block particulate pollution such as PM2.5 and has been tested to filter particles as small as PM0.3. The textile is a thermoplastic polymer, which is an effective mesh to trap pollution. This filter layer textile has a high surface area, meaning a greater percentage of particulates are captured as they pass through it.

## 3. Activated Carbon Cloth

Made from a 100% pure activated carbon cloth. Originally invented by the UK Ministry of Defense, it was then extensively developed and made into a product for use in chemical, biological, and nuclear warfare protection.

The high number of filaments in the activated carbon cloth allows it to absorb particles quickly while still being easy to breathe through. The cloth also traps bacteria, killing it and preventing infection. Silver is added, which helps to enhance anti-bacterial/viral properties.

The entire mask itself is the filter and it can be used for an average of 3-6 months. The circular plastic valve on the mask helps to reduce humidity and increase the wearer's comfort.

# TESTING RESULTS & CERTIFICATIONS

Our flagship PRO mask provides the highest quality filtration available on the consumer market. Cambridge Mask Co have the global exclusive rights to a carbon technology developed by the UK Ministry Of Defence for chemical, nuclear and biological warfare protection.



## **Bacterial Filtration Efficiency (BFE) and Differential Pressure (Delta P) Final Report**

BFE tests the mask's ability to filter out bacteria in the air. Delta P is tested to ensure that the mask does not become difficult to breath through as it filters out bacteria. The PRO mask has an average BFE of 99.72% and meets all Delta P standards.



## **Microbial Cleanliness (Bioburden) of Medical Masks Final Report**

This test ensures that when you open your new mask it is clean and free of bacteria. The PRO mask has a bioburden well below the accepted amount for medical masks.



## **Determination of Inhalation and Exhalation Resistance for Air-Purifying Respirators Final Report**

This test evaluates the breath-ability of the mask to ensure that it is neither too difficult to breath in or out while wearing the mask. The PRO mask is well below the maximum resistance permitted for both inhalation and exhalation.



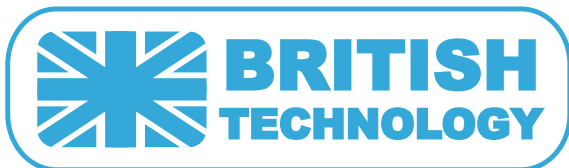
## **Viral Filtration Efficiency (VFE) Final Report**

VFE tests the mask's ability to filter out viruses in the air. The PRO mask has an average VFE of 99.86%.



## **Latex Particle Challenge Final Report**

The Latex Particle Challenge tests the Particle Filtration Efficiency (PFE), which is the mask's ability to keep out dust, pollutants and other non-viable particles in the air. The PRO mask has an average PFE of 99.76%.



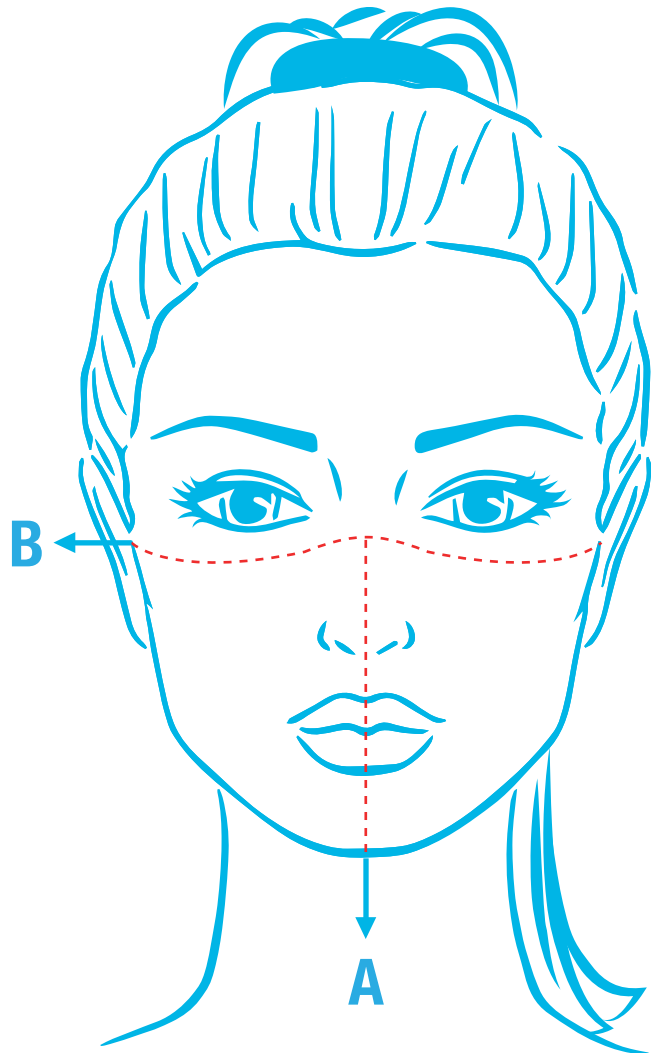
**C € 0493**

FFP2 R D EN 149 : 2001 + A1 : 2009

# FEATURES



# MASK SIZES & MEASUREMENTS



Wearing the correct size mask is essential for effective filtration and comfort. To find the best fit, follow the steps below:

- A. Step one, using a tape measure, measure from the mid-point of your nose to just over an inch under your chin, this would be your reference for the first number on our size chart.
- B. Step two, measure from the outer edge of your left cheekbone to the outer edge of your right to cheekbone (about an inch below your temples) to find the correct width for your mask. Make sure to add a couple of millimeters to your measurement to avoid mask being too small.

We produce masks in 5 different sizes for children and adults. Usually, children wear sizes XS-S and adults wear sizes M-XL. Other than size XS, all masks have an adjustable nose-clip and toggles on the jawline area to assist you in achieving a better fit and a perfect seal.

SIZE	XS	S	M	L	XL
A (mm/inch)	120mm /4.7inch	140mm /5.5inch	150mm /5.9inch	170mm /6.7inch	175mm /6.8inch
B (mm/inch)	135mm /5.3inch	170mm /6.7inch	190mm /7.5inch	200mm /7.8inch	220mm /8.6inch
Weight	6-10kg 13.2-22lb	11-32kg 24.2-70.5lb	33-64kg 72.7-141lb	65-89kg 143.3-196.2lb	90kg 198.4lb



# Disposable vs Non Disposable



CAMBRIDGE MASK PRO



DISPOSABLE MASK



SURGICAL MASK



	<b>Pattern choices:</b>	✓ Comes in a large range of designs.	✗ Does not provide variation	✗ Does not provide variation
	<b>Sizing:</b>	✓ Suitable for everyone. Available XS-S sizes for children and M-XL sizes for adults.	✗ One size fits all	✗ One size fits all
	<b>Children suitability:</b>	✓ Certified as child safe under 14 U.S.C 1278a and CFR Parts 1370 1501 1500.53 and 1500.44	✗ Does not certified as child safe	✗ Does not certified as child safe
	<b>99% Filtration:</b>	✓ 99.6% viral filtration efficiency and 99.7% bacterial filtration efficiency	✗ Filters out 95% of airborne particles	✗ Expelled water droplets only
	<b>Adjustable:</b>	✓ Adjustable toggles and headstrap	✗ Does not provide adjustable toggles and headstrap	✗ Does not provide adjustable toggles and headstrap
	<b>Environmental impact:</b>	✓ Saving cost & less material wastage	✗ Disposable	✗ Disposable
	<b>Product packaging:</b>	✓ Eco-friendly packaging	✗ Non recycle paper packaging	✗ Non recycle paper packaging
	<b>Mask filter life:</b>	✓ 200-300 hours (3-6 months)	✗ 8-10 hours	✗ 8-10 hours
	<b>Cost per use*:</b>	✓ RRP \$1.20	✗ RRP \$1.20	✗ RRP \$0.20

\*Cost per use based on an 8 hour shift

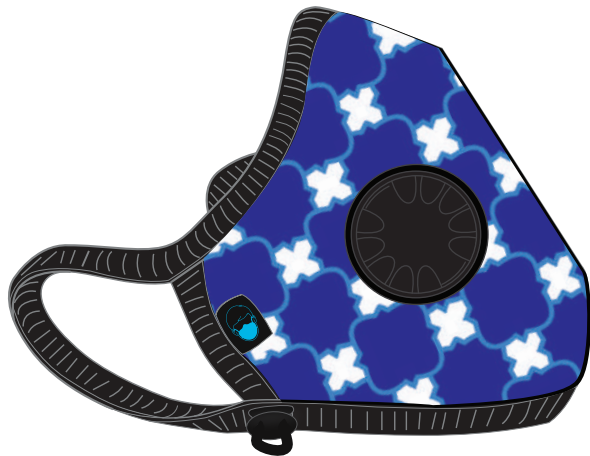
Source:

CDC: Understanding the Difference Infographic [shorturl.at/hqwRY](https://shorturl.at/hqwRY)

FDA: N95 Respirators, Surgical Masks, and Face Masks [shorturl.at/abhEG](https://shorturl.at/abhEG)



## CUSTOMISED DESIGN







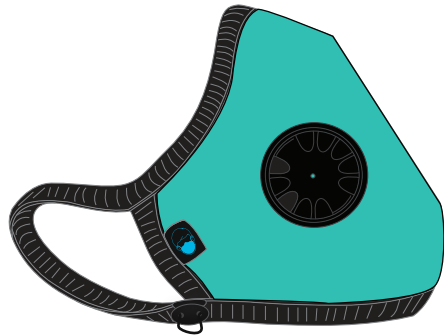
Combine our mask with your business logo and design to make a fashionable and functional gift or tool for employees, clients, and brand followers.

Our expert design support team can provide your business with dedicated and detailed support in the customisation process. We are currently offering businesses the opportunity to brand on our PRO mask range. The Cambridge PRO mask is almost 100% effective at filtering out pollution and pathogens. Your personal branding or design can be tailor-made and displayed on the outer layer of the mask.

Our minimum order quantity is 512 units per design and we can offer our full range of sizes (XS, S, M, L, XL). Should you desire a mixture of sizes within your unit order, we can accommodate your requirements.

The PRO mask packaging can also be customised to reflect your company's brand. For packaging customisation, please reach out to: [distributor@cambridgemask.com](mailto:distributor@cambridgemask.com)

# CUSTOMIZATION PROCESS



## LEFT SIDE

The left side of the mask is where the valve is positioned, as well as the size label



## RIGHT SIDE

The right side of the mask provides more space for design element such as your logo or bold patterns



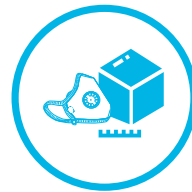
### Step 1: Consultation

If you have a design in mind, please send it to us as a .psd or .ai file. We will digitally fit it onto our mask outline and provide you with feedback about how your color choices will translate on the mask fabric. If you do not have a design in mind, please send us your logo in .psd or .ai file and we can create a design concept for you.



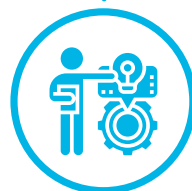
### Step 2: Design Approval

We will seek your approval of the final digital design copy before we proceed to print production. Once you have approved your brand's digital design copy, we will create your samples. Please note, a 300 USD design fee will be charged after the initial design concept has been accepted and approved.



### Step 3: Creating the Sample

On average, it will take 14 working days for us to create your sample. Shipping takes an estimated 5-10 working days subject to the shipping destination. A shipping fee of the sample to your address will be added and the quote will be shared before the sample is sent.



### Step 4: Feedback

Once you have received your mask samples, we await your feedback and work closely to support your business if there are any revisions needed on the design. We will offer you a maximum of two design revisions.



### Step 5: Finalisation

Once you have confirmed the design, production will start immediately and the lead time for completion is currently 45 working days.

2 - 3 Months process

Please note that the duration of each process may be subject to change with prior notice.

# CASE STUDIES







# SAVING COST

There are some very important commercial factors to consider aside from fantastic brand recognition and PR opportunities when collaborating with Cambridge Mask Co.

We have helped many of our clients reduce both costs and material wastage by aiding their move away from single-use masks. Our BASIC mask has a lifespan of around 80 hours whilst the PRO lasts for about 200 hours. By calculating the total costs over the same timeframe, we can compare the savings made when using PRO or BASIC masks.

Eg. Company A gives their employees a new mask for each 8hr shift costing \$1 per unit.



	Hour Use	Masks Used	Unit Cost	Total Cost	Cost Saving
PRO	200	1	\$17.95	\$17.95	\$7.05
BASIC	80	2.5	\$6.63	\$16.58	\$8.42
Single Use	8	25	\$1.00	\$25.00	-

\*Pricing is from May 2020

For every 200hrs, our PRO Mask provides a saving of \$7.05 and our BASIC Mask saves \$8.42.



# LESS WASTE

For every single PRO Mask or every 2.5 BASIC masks, a company would have used 25 single-use masks. The material waste saving is displayed in the following table:



	Hour Use	Masks Used	Unit Weight (g)	Total Weight (g)	Waste Material Saving (g)
PRO	200	1	170	170	330
BASIC	80	2.5	40	100	400
Single Use	8	25	20	500	-

For every 200hrs, our PRO mask provides a waste material saving of 330g and our BASIC mask saves 400g.

This material waste saving can help companies to conform with ISO14001 and many other standards that stipulate the reduction of waste material.

## DISTRIBUTOR

WHSmith



McKesson



halfords

MEGASTORE

## CORPORATE PARTNERSHIP



## CONTACT US



[cambridgemaskco](#)



[cambridgemask](#)



[cambridgemaskco](#)



[cambridgemaskco](#)



[sales@cambridgemask.com](mailto:sales@cambridgemask.com)



[cambridgemask.com](#)

