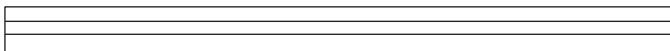


Pre-hung French Door Installation Guide

In case of questions or missing parts, please contact Dooraftersale@gmail.com

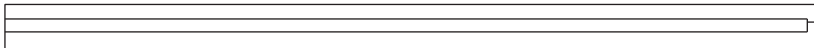
What's included

(A) x1

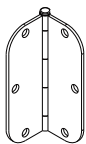
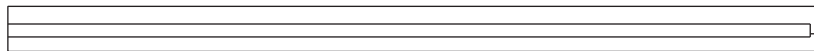


Trimmable for doors from 48"(double 24") to 64"(double 32")

(B) x1



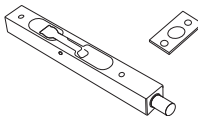
(C) x1



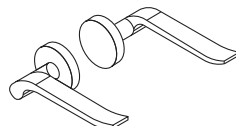
(D) x6



(E) x36



(F) x1



(G) x2

Tools Required

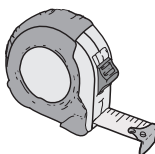
Speed Square



Phillips Screwdriver



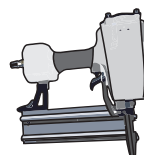
Tape Measure



Pencil

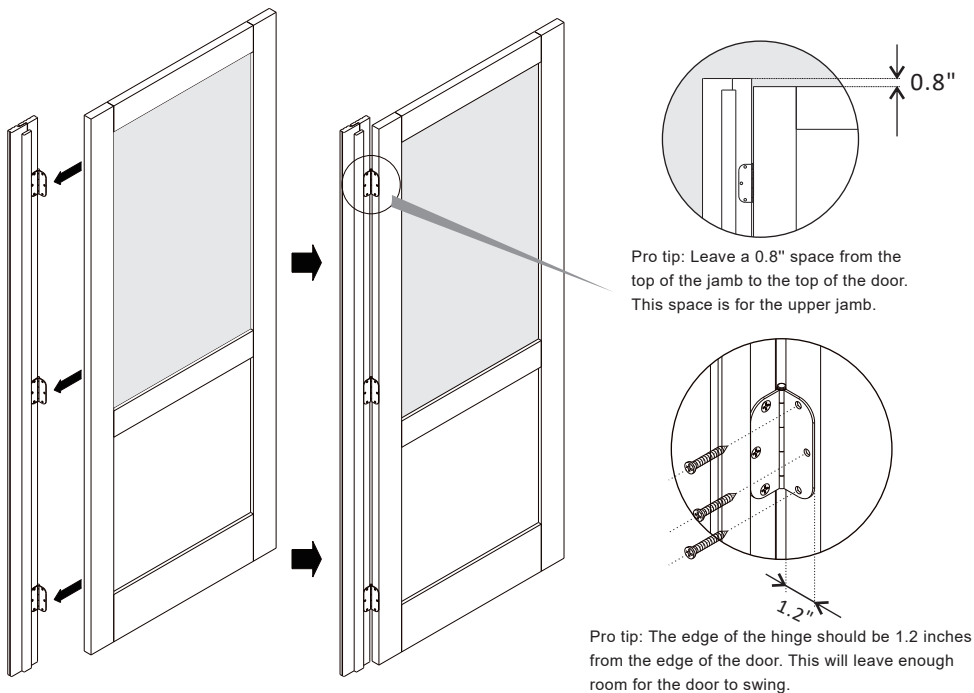


Nail Gun



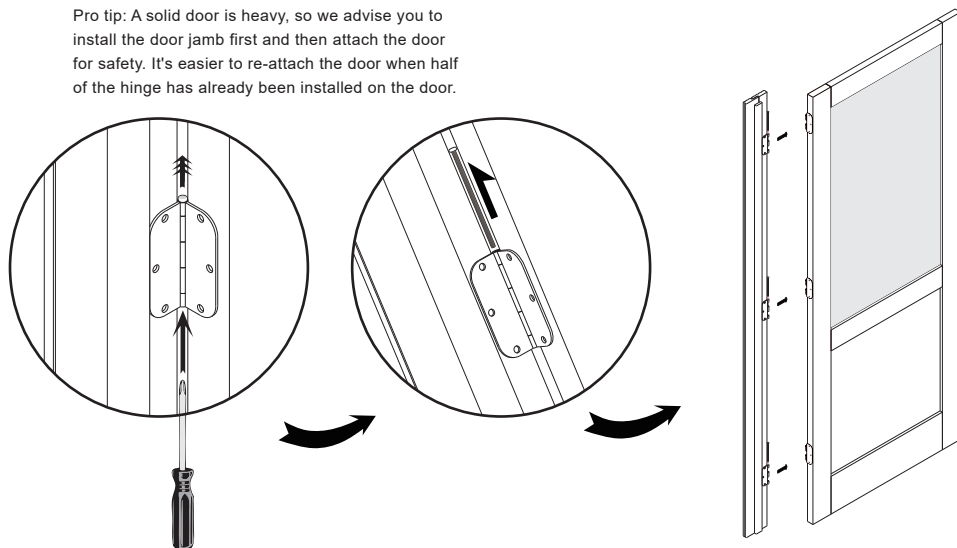
Step ① Attach Door to Jamb

Start from Left Door. Need to Replicate Step 1 & 2 for Right Door

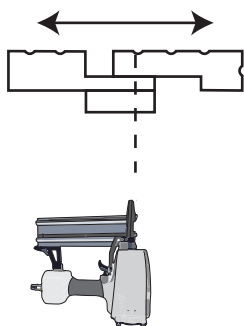


Step ② De-attach Door and Jamb

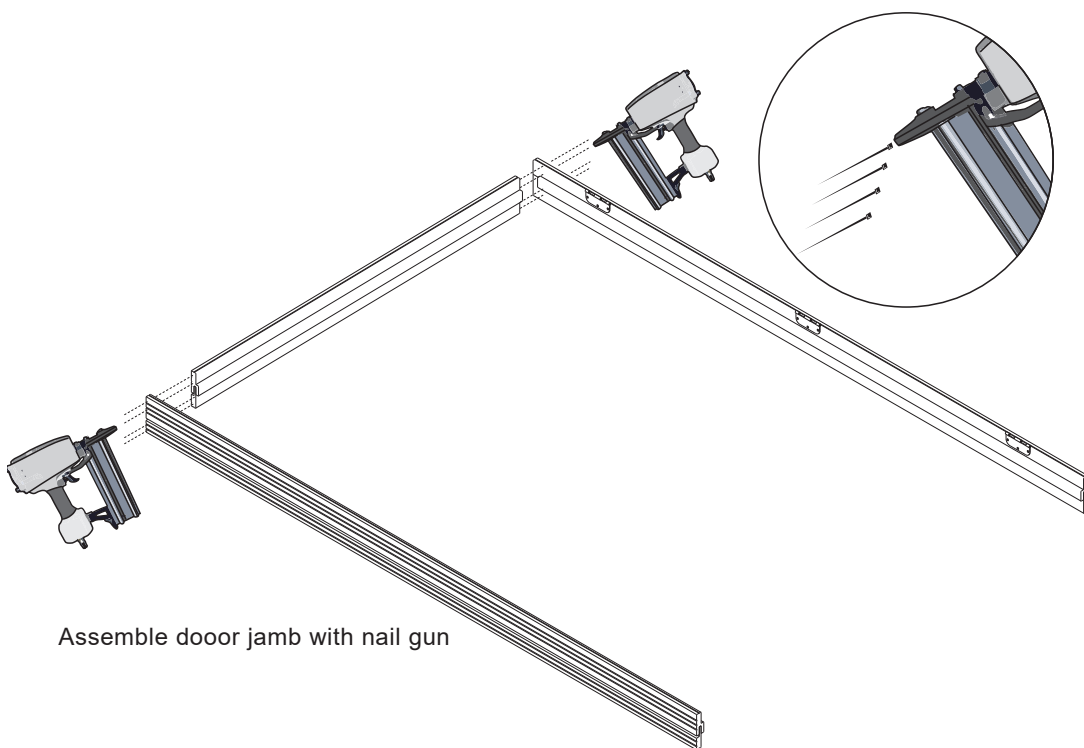
Pro tip: A solid door is heavy, so we advise you to install the door jamb first and then attach the door for safety. It's easier to re-attach the door when half of the hinge has already been installed on the door.



Step ③ Assemble Jamb Kit



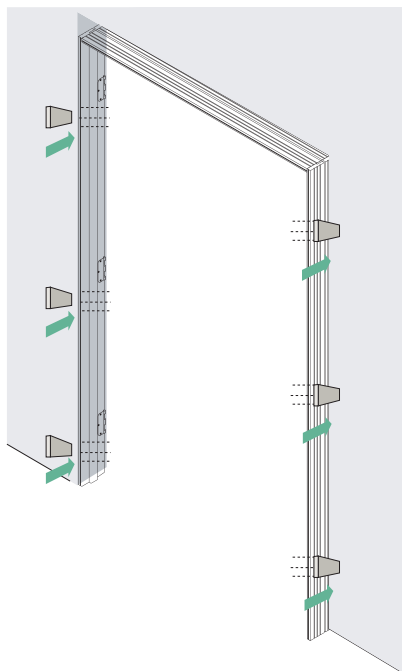
Our door frame need to trim the width to fit different wall thicknesses. Please adjust the frame to the desired width and secure it with a nail gun. Replicate this step for all 3 frames



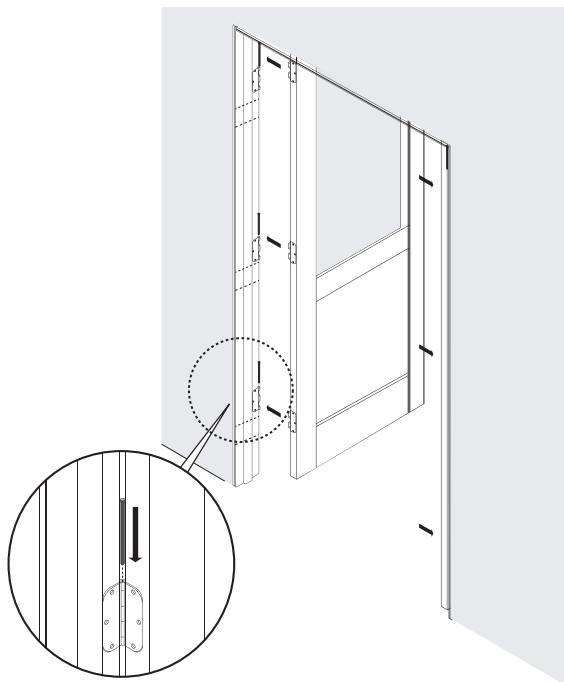
Assemble dooor jamb with nail gun

Step ④ Install Jamb to the Opening, and Re-attach the Door

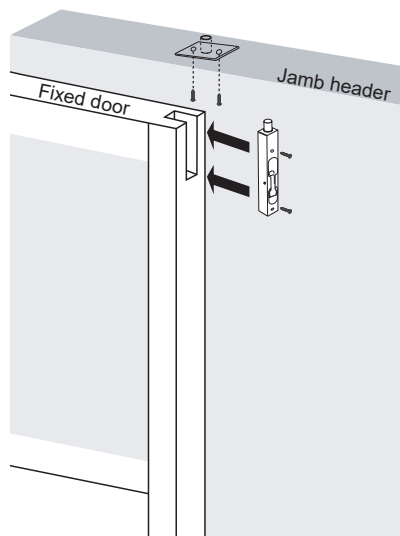
Step 1: Install the jamb



Step 2: Attach the doors



Step 3: Install the fixed door fixator



Step 4: Your French Door is ready

