

SAFETY INSTRUCTIONS

SAFETY INSTRUCTIONS

TRAINING

1. Read the instructions carefully. Be familiar with the controls and the proper use of the equipment.
2. Never allow children or people unfamiliar with these instructions to use the lawnmower. Local regulations can restrict the age of the operator.
3. Never mow while people, especially children, or pets are nearby.
4. Keep in mind that the operator or user is responsible for accidents or hazards occurring to other people or their property.
5. Do not operate the machine while under the influence of alcohol or drugs.
6. Follow the manufacturer's recommendation for wheel weights or counterweights.
7. Stop the machine and attachment(s) if anyone enters the area.

PREPARATION

1. While mowing, always wear substantial footwear and long trousers. Do not operate the equipment when barefoot or wearing open sandals.
2. Thoroughly inspect the area where the equipment is to be used and remove all objects which can be thrown by the machine.
3. Warning - gas is highly flammable.
 - Store fuel in containers specifically designed for this purpose.
 - Refuel outdoors only and do not smoke while refueling.
 - Add fuel before starting the engine. Never remove the cap of the fuel tank or add gas while the engine is running or when the engine is hot.
 - If gas is spilled, do not attempt to start the engine but move the machine away from the area of spillage and avoid creating any source of ignition until gas vapours have dissipated.
 - Replace all fuel tank and container caps securely.
4. Replace faulty mufflers.
5. Before using, always visually inspect to see that the blades, blade bolts and cutter assembly are not worn or damaged. Replace worn or damaged blades and bolts in sets to preserve balance.
6. On multi-bladed machines, take care as rotating one blade can cause other blades to rotate.

OPERATION

1. Do not operate the engine in a confined space where dangerous carbon monoxide fumes can collect.
2. Mow only in daylight or in good artificial light.
3. Avoid operating the equipment in wet grass, where feasible.
4. Always be sure of your footing on slopes.
5. Walk, never run.
6. For wheeled rotary machines, mow across the face of slopes, never up and down.
7. Exercise extreme caution when changing direction on slopes.
8. Do not mow excessively steep slopes.
9. Use extreme caution when reversing or pulling the lawnmower towards you.
10. Stop the blade(s) if the lawnmower has to be tilted for transportation when crossing surfaces other than grass, and when transporting the lawnmower to and from the area to be mowed.
11. Never operate the lawnmower with defective guards, or without safety devices, for example deflectors and/or grass catchers, in place.
12. Do not change the engine governor settings or over speed the engine.
13. Disengage all blade and drive clutches before starting the engine.
14. Start the engine or switch on the motor carefully according to instructions and with feet well away from the blade(s).
15. Do not tilt the lawnmower when starting the engine or switching on the motor, except if the lawnmower has to be tilted for starting. In this case, do not tilt it more than absolutely necessary and lift only the part which is away from the operator.
16. Do not start the engine when standing in front of the discharge chute.

SAFETY INSTRUCTIONS

17. Do not put hands or feet near or under rotating parts. Keep clear of the discharge opening at all times.
18. Never pick up or carry a lawnmower while the engine is running.
19. Stop the engine and disconnect the spark plug wire, making sure that all moving parts have come to a complete stop, and where a key is fitted remove the key:
 - Before clearing blockages or unclogging chute.
 - Before checking, cleaning or working on the lawnmower.
 - After striking a foreign object. Inspect the lawnmower for damage and make repairs before restarting and operating the lawnmower.
 - If lawnmower starts to vibrate abnormally (check immediately).
20. Stop the engine and disconnect the spark plug wire, making sure that all moving parts have come to a complete stop, and where a key is fitted remove the key:
 - Whenever you leave the lawnmower.
 - Before refueling.
21. Reduce the throttle setting during engine shut down and, if the engine is provided with a shut-off valve, turn the fuel off at the conclusion of mowing.
22. Go slow when using a trailing seat.
23. Avoid holes, ruts, bumps, rocks, or other hidden hazards.
24. Do not direct discharge material toward anyone. Avoid discharging material against a wall or obstruction. Material may ricochet back toward the operator. Stop the blade(s) when crossing gravel surfaces.
25. Do not leave a running machine unattended. Always park on level ground, disengage the attachment, set parking brake, and stop engine.
26. Do not mow in reverse unless absolutely necessary.
27. Tragic accidents can occur if the operator is not alert to the presence of children. Children are often attracted to the machine and the mowing activity. Never assume that children will remain where you last saw them.
28. Keep children out of the operating area and under the watchful care of a responsible adult other than the operator.
29. Travel in the manufacturer recommended direction on slopes. Use caution while operating near drop-offs.
30. Poor footing could cause a slip and fall accident.
31. Do not operate machine under any condition where traction, steering, or stability is in question. Tires could slide even if the wheels are stopped.
32. Always keep the machine in gear when going down slopes. Do not coast downhill.
33. Avoid starting and stopping on slopes. Avoid making sudden changes in speed or direction. Make turns slowly and gradually.
34. Use extra care while operating machine with a grass catcher or other attachment(s). They can affect the stability of the machine.
35. Extinguish all cigarettes, cigars, pipes and other sources of ignition.
36. Do not store the machine or fuel container, or refuel, where there is an open flame, spark, or pilotlight such as on a water heater or other appliance.
37. Use full width ramps for loading and unloading a machine for transport.

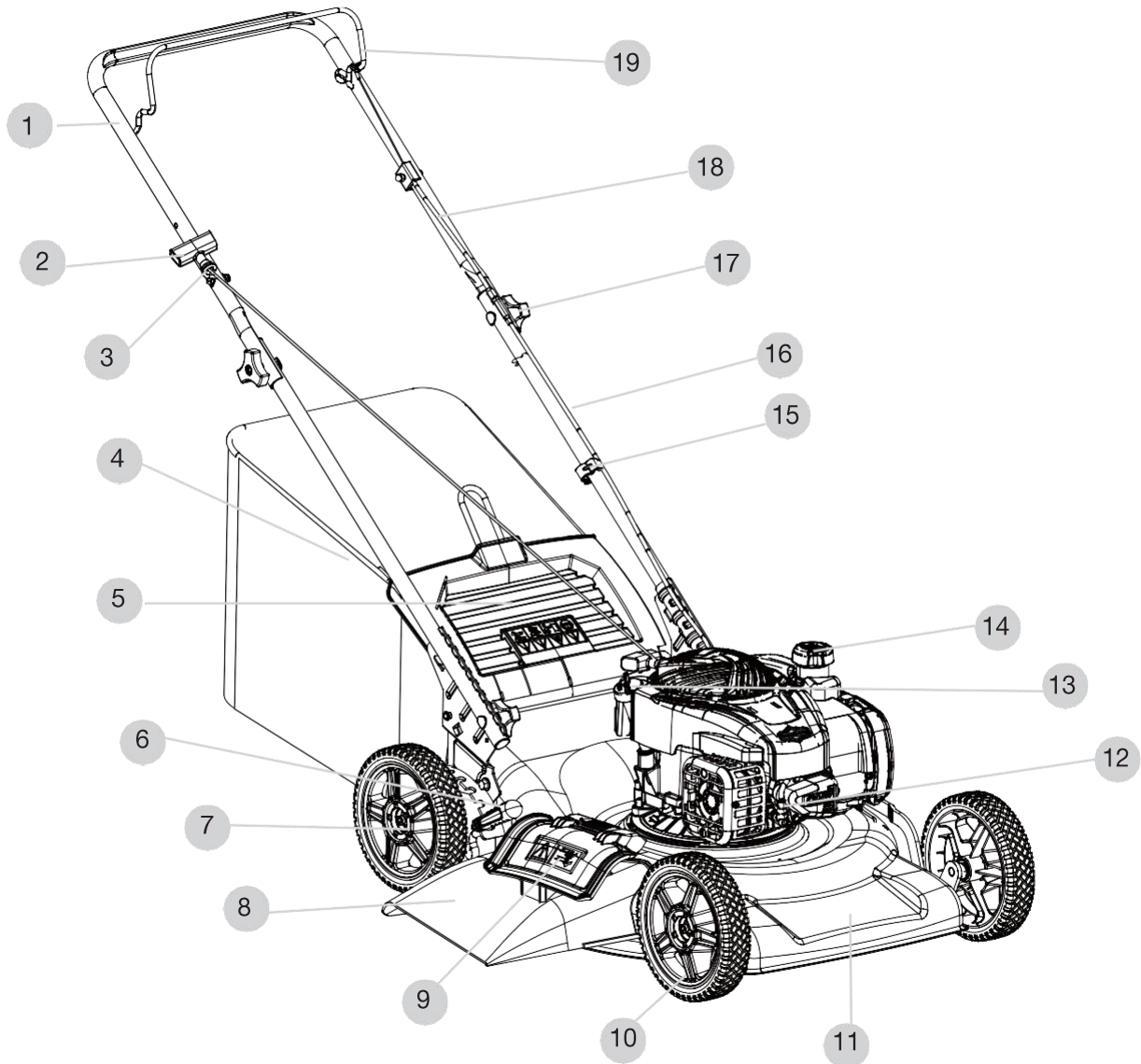
MAINTENANCE AND STORAGE

1. Keep all nuts, bolts and screws tight to be sure the equipment is in safe working condition.
2. Never store the equipment with gas in the tank inside a building where fumes can reach an open flame or spark.
3. Allow the engine to cool before storing in any enclosure.
4. To reduce the fire hazard, keep the engine, muffler, battery compartment and gas storage area free of grass, leaves, or excessive grease.
5. Check the grass catcher frequently for wear or deterioration.
6. Replace worn or damaged parts for safety.
7. If the fuel tank has to be drained, this should be done outdoors.

PARTS LIST

KNOW YOUR LAWN MOWER

Fig. 1



PARTS LIST

1. Upper handle
2. Engine start handle
3. Rope guide
4. Grass bag
5. Rear chute flap
6. Height-adjusting handle
7. Rear wheel
8. Side discharge chute (removable)
9. Side discharge cover
10. Front wheel
11. Cutting deck
12. Spark plug cover
13. Oil filler dipstick
14. Gas filler cap
15. Cord clip
16. Lower handle
17. Handle knob and bolt
18. Bowden cable
19. Engine on/off control bar

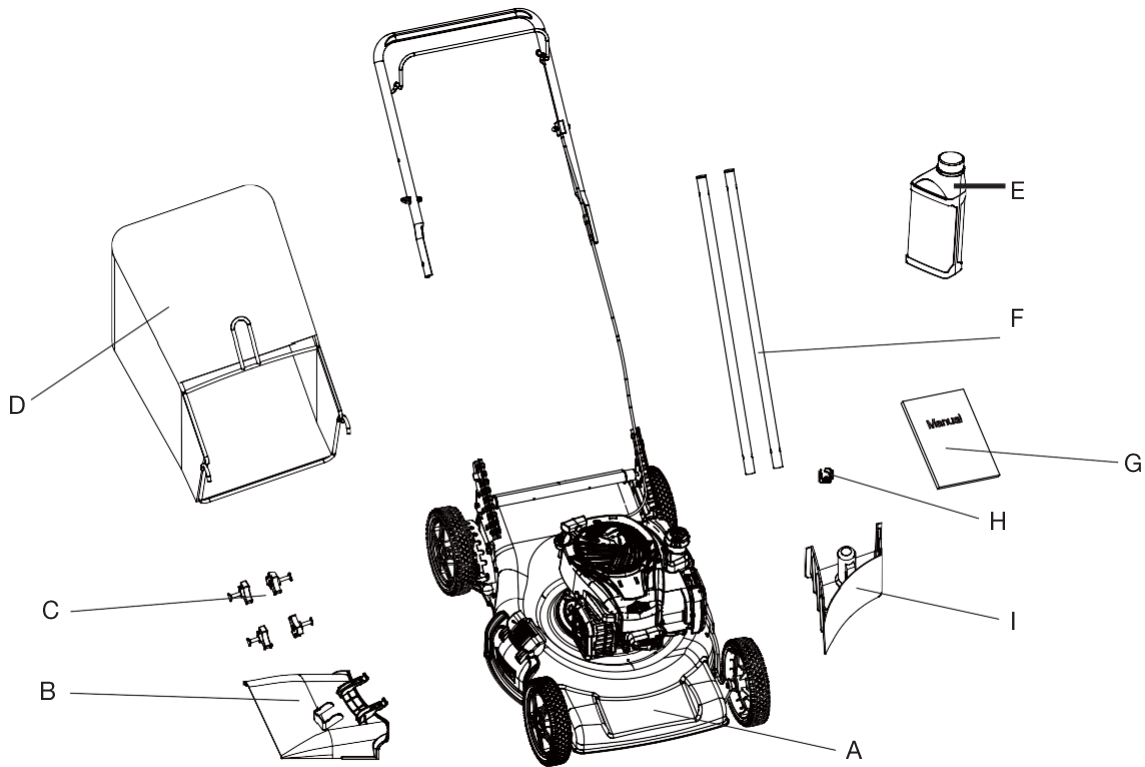
PARTS LIST

Carefully remove the lawn mower from its packaging and check that the following parts are included:

- A. Main mower deck (with upper handle) 1 pc
- B. Side discharge chute 1 pc
- C. Handle Knob and Bolt 4 sets
- D. Grass bag 1 pc
- E. Engine Oil (SAE 30 15 o.z.) 1 pc
- F. Lower handle bar 2 pcs
- G. Manual 1 pc
- H. Cord clip 1 pc
- I. Mulching plug (inside the mower) 1 pc

PARTS LIST

Fig. 2



WARNING!

If any parts are damaged or missing, do not operate this lawn mower until the missing parts are replaced.

Failure to heed this warning could result in serious personal injury.



NOTE:

Always recycle the packaging in accordance with local recycling programs.



WARNING!

This item requires a two-person lift to remove from the packaging. Make sure that you have sufficient space to put the lawn mower down. Keep your feet apart so that you have a stable position, bend at the knees and keep your back straight.

INTENDED USE

This gas-powered lawn mower has been designed for cutting residential lawn areas.

The machine is to be used only for its prescribed purpose. Any other use is deemed to be a case of misuse. The user/operator and not the manufacturer will be liable for any damage or injuries of any kind caused as a result of this.

Please note that our equipment has not been designed for use in commercial, trade or industrial applications. Our warranty will be voided if the machine is used in commercial, trade or industrial businesses or for equivalent purposes.

TECHNICAL SPECIFICATIONS

TECHNICAL SPECIFICATIONS

Engine type	Single cylinder 4-stroke
Engine displacement	140 cc
Engine speed	3100±100 RPM
Cutting path	21" (53 cm)
Grass bag capacity	16 Gallon (60 L)
Height adjustments	1.25" - 3.75" (32-95 mm)
Front /Rear wheel diameter	8" (20 cm)

ASSEMBLY



CAUTION! Read complete INSTRUCTION MANUAL before operating this machine.

IMPORTANT! THIS LAWN MOWER IS SHIPPED WITHOUT OIL OR GASOLINE IN THE ENGINE.

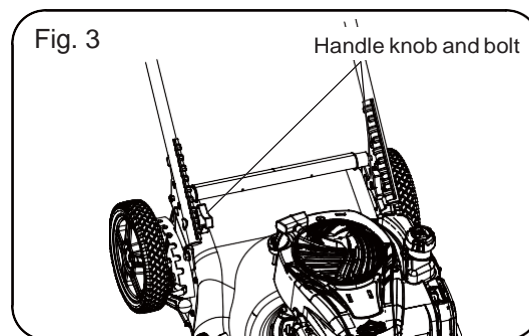
Your new lawn mower has been assembled at the factory with the exception of those parts left disassembled for shipping purposes. All parts, such as nuts, washers, bolts, etc., necessary to complete the assembly have been placed in the parts bag. To ensure safe and proper operation of your lawn mower, all parts and hardware you assemble must be tightened securely. Use the correct tools as necessary to ensure proper tightness.

TO REMOVE LAWN MOWER FROM CARTON

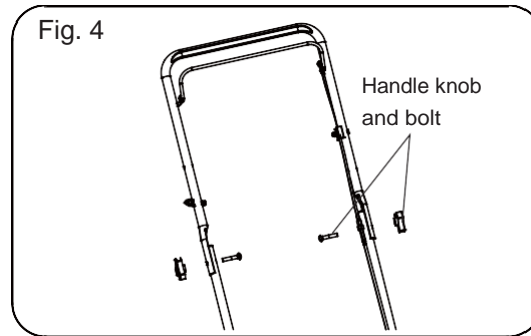
1. Remove loose parts included with mower.
2. Cut down two end corners of carton and lay end panel down flat.
3. Remove all packing materials except padding between upper and lower handle and padding holding control bars to upper handle.
4. Roll lawn mower out of carton and check carton thoroughly for additional loose parts.

ASSEMBLING THE HANDLE

As shown in Figs. 3 and 4



ASSEMBLY

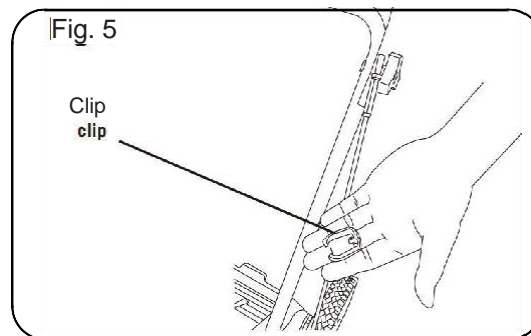


IMPORTANT: Unfold handle carefully to avoid pinching or damaging the bowden cable.

1. Fasten the lower handle to the lawn mower deck by using 1 knob and 1 bolt on each side.
2. Unfold the upper handle and attach it to lower handle by using 1 knob and 1 bolt on each side, make sure the engine on/off control bar is facing upwards.

CLIP BOWDEN CABLE TO THE HANDLE

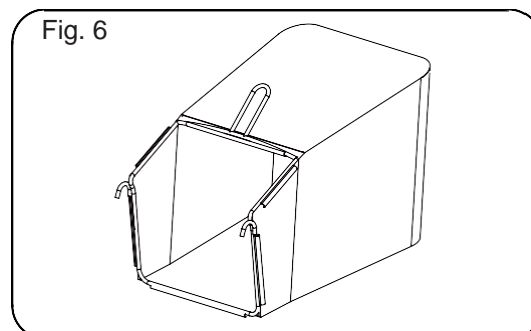
As shown in Fig. 5



Attach the bowden cable to the lower handle with the cord clip (supplied).

ASSEMBLING THE GRASS BAG

As shown in Fig. 6

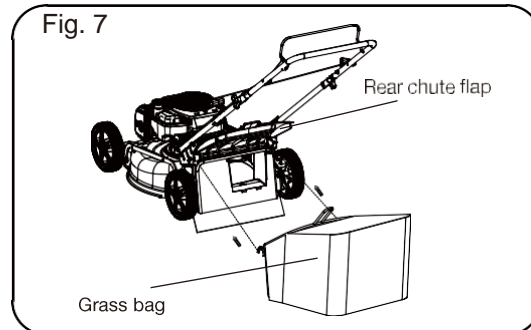


1. The grass bag already be half assembled. Make sure the frame handle is outside of the bag top.
2. Slip the vinyl bindings over the frame.

ASSEMBLY

ATTACHING THE GRASS BAG TO THE MOWER

As shown in Fig. 7

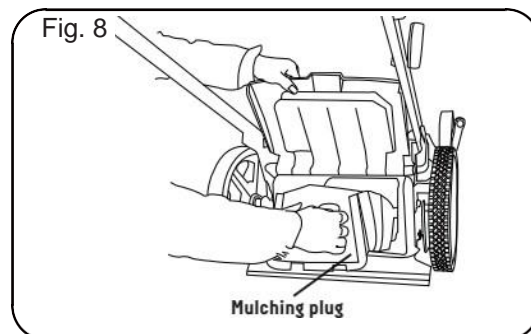


NOTE: Never install or remove the grass bag, mulching plug or side discharge chute while the engine is running.

1. Lift the rear chute flap with one hand and hook in the grass bag, make sure the mulching plug be removed.
2. Release the rear chute flap to secure the grass bag in position.

INSTALLING THE MULCHING PLUG

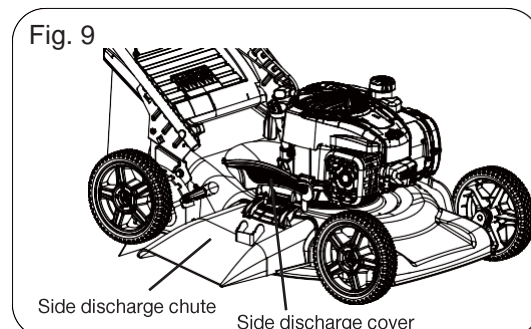
As shown in Fig. 8



1. Remove the grass bag.
2. Push the mulching plug into the discharge chute until it is locked in position.
3. Release the rear chute flap. It will close back to cover the mulching plug.

INSTALLING THE SIDE DISCHARGE CHUTE

As shown in Fig. 9



ASSEMBLY



NOTE: When changing to the side discharge, remove the grass bag and insert the mulching plug.

1. Lift the side discharge cover with one hand and hook in the side discharge chute with the other hand.
2. Release the side discharge cover to secure the chute in position.

CHECKING AND FILLING ENGINE OIL

As shown in Figs. 10 to 11



CAUTION! The following procedures and adjustments must be performed before the engine is started.

Do not attempt to make any of these adjustments while the engine is running.



CAUTION! To prevent engine damage, the engine is shipped without oil or gas.

The engine must be filled with the correct grade of oil and gas before starting the engine.



NOTE! Running the engine with a low oil level will cause engine damage. It is recommend that high-detergent, premium-quality 4-stroke engine oil used. Using non-detergent oil can shorten the engine's service life, and using 2-stroke oil will damage the engine.



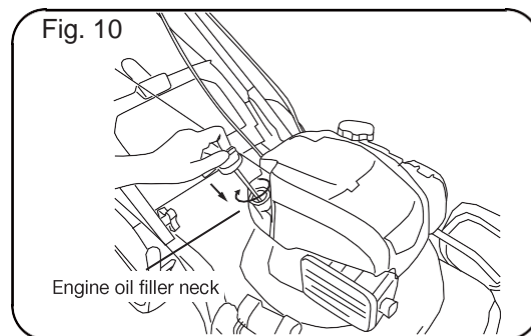
CAUTION! Always use high-quality detergent oil classified SAE30 oil (or equivalent, such as SAE 5W-30, often called 4-stroke lawn mower oil).

Never use additives with recommended oil.



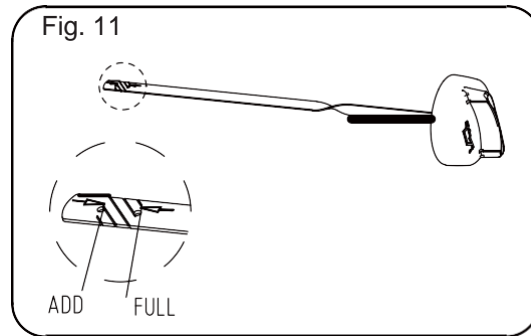
NOTE: To check the engine oil level, stop engine and place the mower on a level surface.

1. Remove the oil filler dipstick and wipe oil from it with a clean cloth (see Fig. 10).



2. Insert the dipstick into the oil filler neck, and tighten it.
3. Remove the dipstick and check the oil level: the oil level must be between the Min and Max marks on the dipstick. If near the lower level, fill to upper lever with the recommended oil (SAE30 or equivalent). Do not overfill. Wipe away any spilled oil (see Fig. 11).

ASSEMBLY



4. Attach oil filler dipstick and tighten by hand.
5. Before using for the first time, add maximum of 15 ounces of oil (supplied, SAE 30).

FILLING WITH ENGINE FUEL

As shown in Fig. 12



CAUTION! Always use clean, fresh unleaded gas. Purchase fuel in quantities that can be used within 30 days. Never mix oil with gas.



CAUTION! Do not fill into the base of neck to allow for fuel expansion. Do not overfill the fuel tank.



CAUTION! WARNING! Gas is highly flammable and extreme caution must be taken when handling or working with it. Keep out of reach of children.



CAUTION! To prevent engine damage the engine is shipped without oil or gas. The engine must be filled with the correct grade of oil and gas before starting the engine.

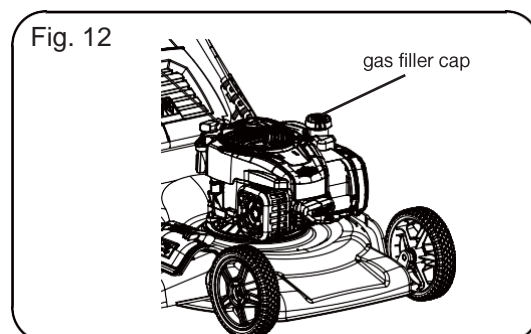


WARNING! Refuel in a well-ventilated area with the engine stopped. Do not smoke or allow flame or sparks in the area where the engine is refueled or where gas is stored. Avoid repeated or prolonged contact with skin or inhalation of vapour.



WARNING! Gasoline with up to 10% ethanol (gasohol) is acceptable. Do not use unapproved gasoline, such as E15 and E85.

1. Clean the area around the gas filler neck before removing the cap. Remove the warning tag, and check the fuel level (see Fig. 12).

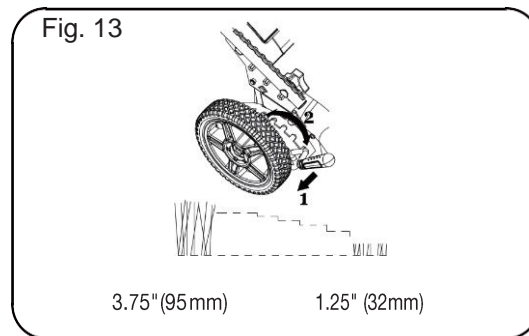


ASSEMBLY

2. Refill the tank if the fuel level is low.
3. Refuel carefully to avoid overfilling or spilling fuel.
There should be no fuel in the filler neck.
4. Clean up any overflow or splashes of gas before starting the engine.
5. Tighten the filler cap after filling; finger tight only.

SETTING THE CUTTING HEIGHT

As shown in Fig. 13



CAUTION! CAUTION! Adjust the cutting height only when the engine is not running.

NOTE: For shipping purposes the height adjustment position may not be adjusted to the cutting position. Before operating the mower adjust cutting height to the normal cutting position.

The cutting height is centrally adjusted with height adjusting handle. Different cutting heights can be selected.

Pull the height adjusting handle out and select the desired cutting height. The handle snaps into the desired position.

From position 1 to position 7, the cutting heights range from 1.25" to 3.75" (32-95mm).

SETTING REQUIRED FUNCTION



NOTE: This lawn mower has three functions. Change functions by changing the installed accessories as shown in the following chart.

To convert mower	Mulching Plug	Grass Bag	Side Discharge Chute
For rear bagging	×	√	×
For mulching	√	×	×
For side discharging	√	×	√

“√”: installed “×”: removed