

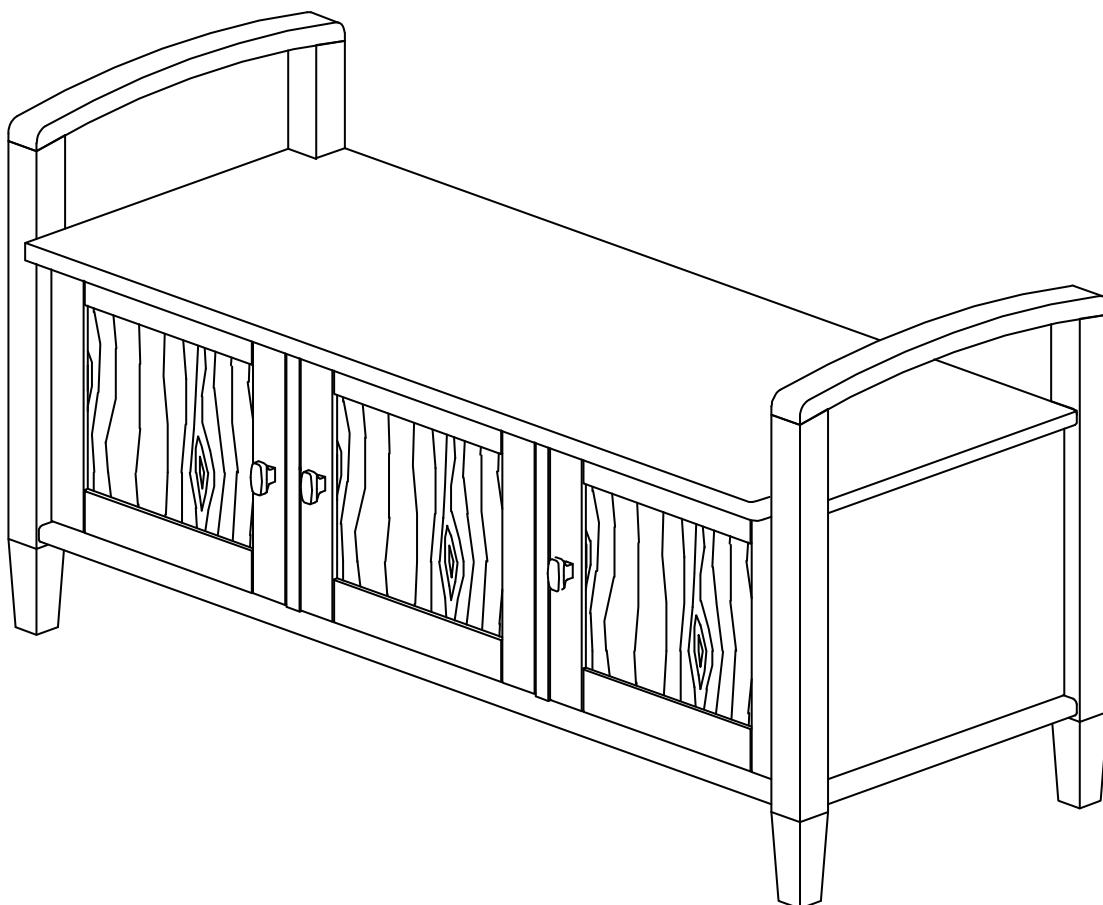
SIMPLI[™]
HOME

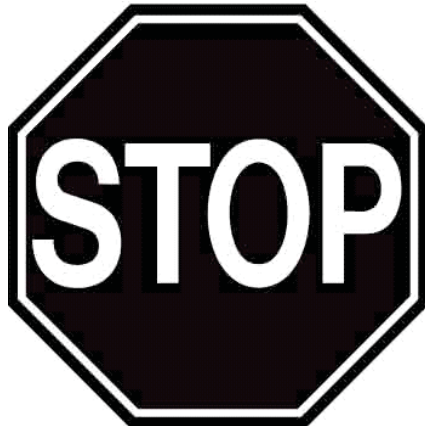
Wyndent Hall[™]
HOME DECOR
brooklyn + max[™]

WARM SHAKER / NORFOLK / LEXINGTON

ENTRYWAY STORAGE BENCH

MODEL # AXWSH006-TB





**FOR REPLACEMENT PARTS OR HELP WITH
ASSEMBLY PLEASE CONTACT US AT:**

simpli-home.com/customer-support

**PLEASE ENSURE TO HAVE THE MODEL #
FROM THE PACKAGING OR INSTRUCTION BOOKLET**

**TO RETURN THE PRODUCT:
PLEASE CONTACT THE RETAILER
WHERE THE ITEM WAS PURCHASED FROM**

SIMPLI[™]
H O M E

Wyndent Hall[™]
HOME DECOR
brooklyn + max[™]

**ENTER
TO WIN**

**Upload an image of our furniture
in your home with a short review
to our facebook page for a chance to**

**Win up to \$3000 of
Simpli Home furniture!!!**

www.facebook.com/simplihomefurnishings



IMPORTANT : Please read this manual carefully before beginning assembly of this product. Keep this manual for future reference.

SAFETY INFORMATION

Identify all the parts and hardware. Do not discard of the packaging until you have checked that you have all of the parts and hardware required. Hardware package may have spare parts.

WARNING: This item contains small parts which can be swallowed by children and pets. Keep children and pets away during assembly. To avoid danger of suffocation, always keep plastic bags away from children and pets. We recommend that you assemble this unit on a carpeted floor to avoid scratches. If using power tools, set the tool to low torque to avoid damage.

May require 2 people for ease of assembly.

CARE and MAINTENANCE

To clean, use a soft or slightly damp cloth, then wipe with a clean, dry cloth. Dust with soft dry cloth.

Do not use ammonia-based cleaning products, as they will damage the finish.

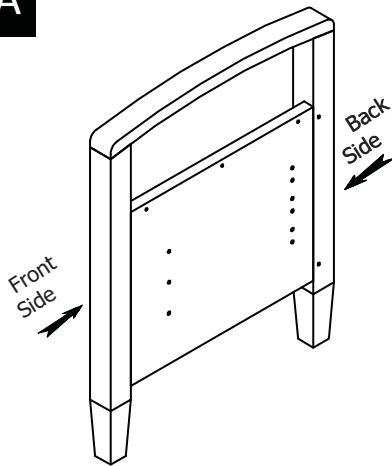
Do not leave liquids or damp cloths on this furniture.

To avoid dulling of the finish, do not place furniture in direct sunlight.

Please inspect and tighten all screws or bolts on a regular basis to ensure proper performance and safety of your item.

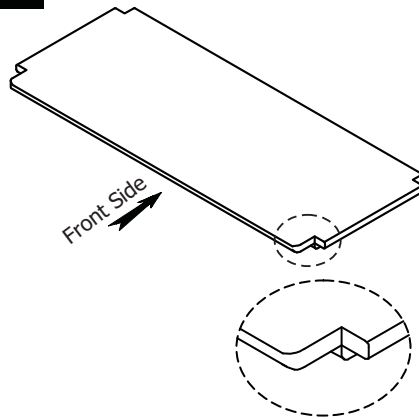
PARTS DESCRIPTION

A



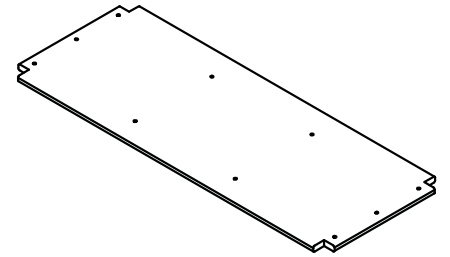
SIDE
QTY 1 PAIR

B



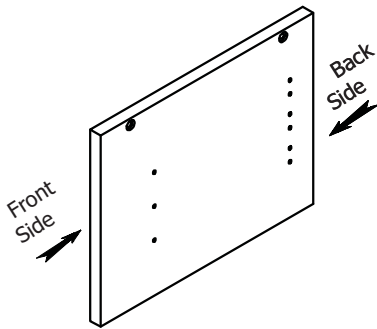
SEAT
QTY 1

C



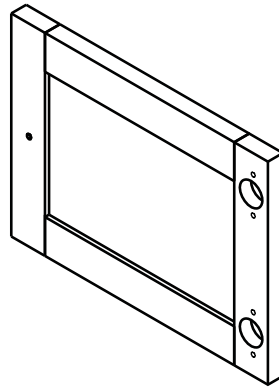
BOTTOM SHELF
QTY 1

D



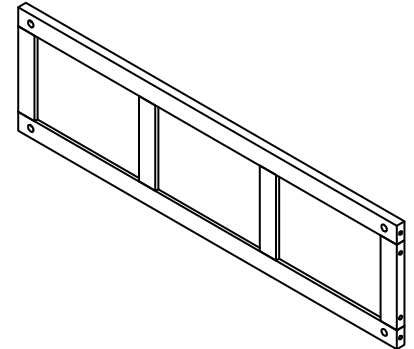
DIVIDER
QTY 1 PAIR

E



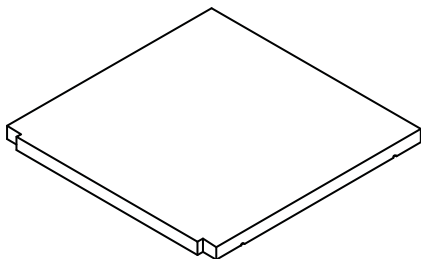
DOOR
QTY 3

F



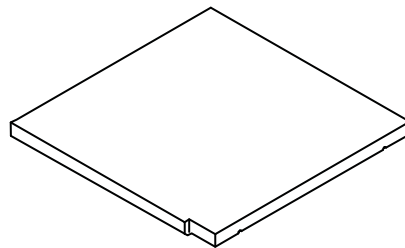
BACK
QTY 1

G



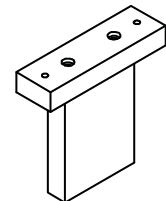
CABINET SHELF
QTY 1

H



CABINET SHELF
QTY 1 PAIR

I

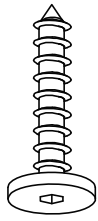


BOTTOM SUPPORT LEG
QTY 1

NEED HELP? For help with assembly or if you are missing a part,
Please call customer service at 1-866-518-0120 ext. 262 (9 am to 4 pm EST)

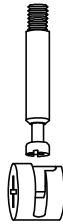
HARDWARE DESCRIPTION

1



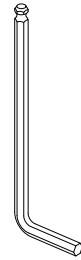
ALLEN KEY SCREW
M6 X 30 mm
QTY 20

2



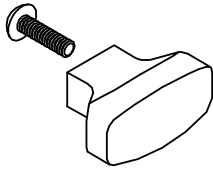
CAM LOCK PIN
CAM LOCK
QTY 4 SETS

3



ALLEN KEY
QTY 1

4



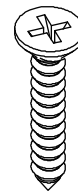
HANDLE
M4 X 25 mm
QTY 3 SETS

5



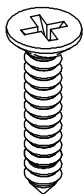
WOOD DOWEL
Ø8 X 30 mm
QTY 8

6



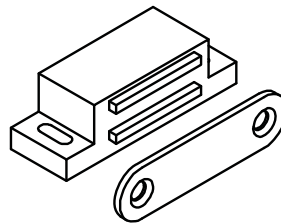
PHILLIPS SCREW
M3 X 15 mm
QTY 12

7



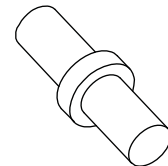
PHILLIPS SCREW
M4 X 15 mm
QTY 36

8



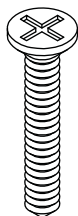
MAGNET AND PLATE
QTY 3 SETS

9



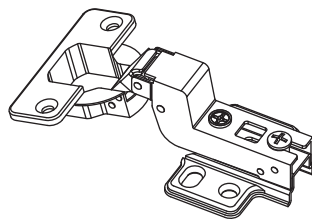
SHELF SUPPORT
QTY 18

10

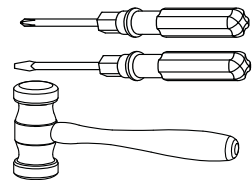


PHILLIPS SCREW
M4 X 30 mm
QTY 4

11

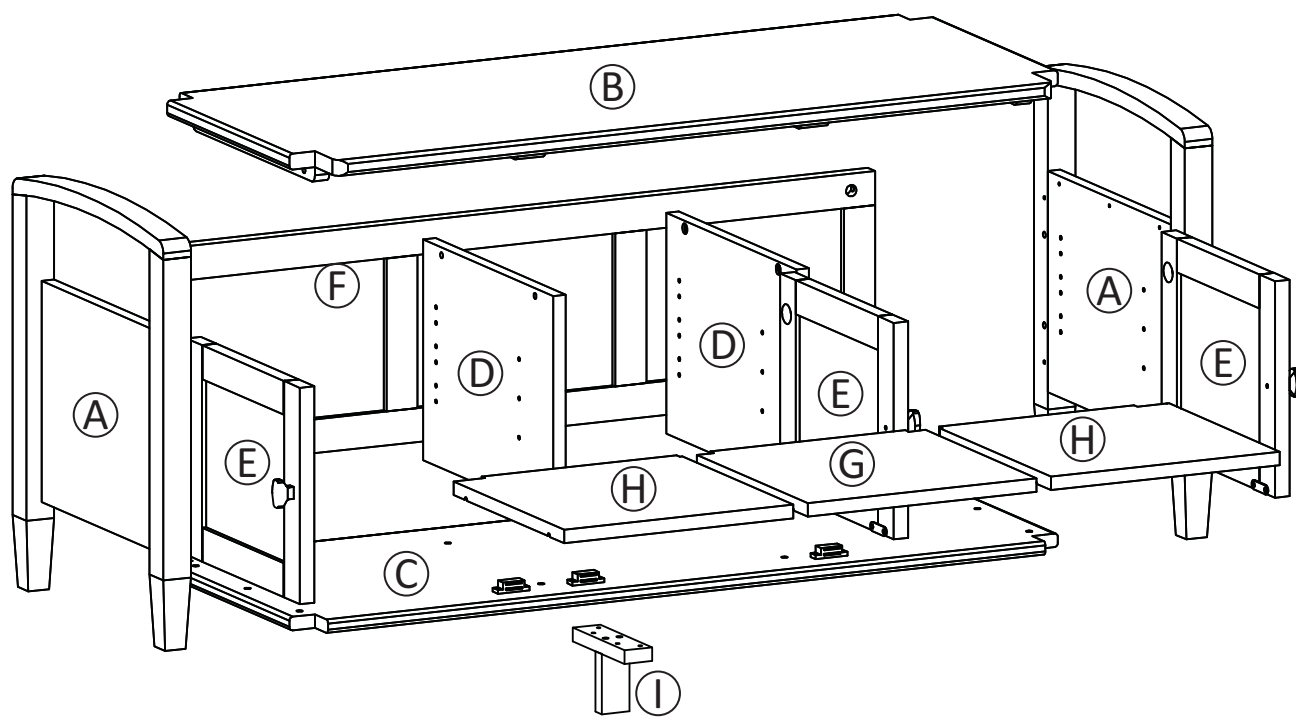


ADJUSTABLE HINGE
QTY 6 SETS

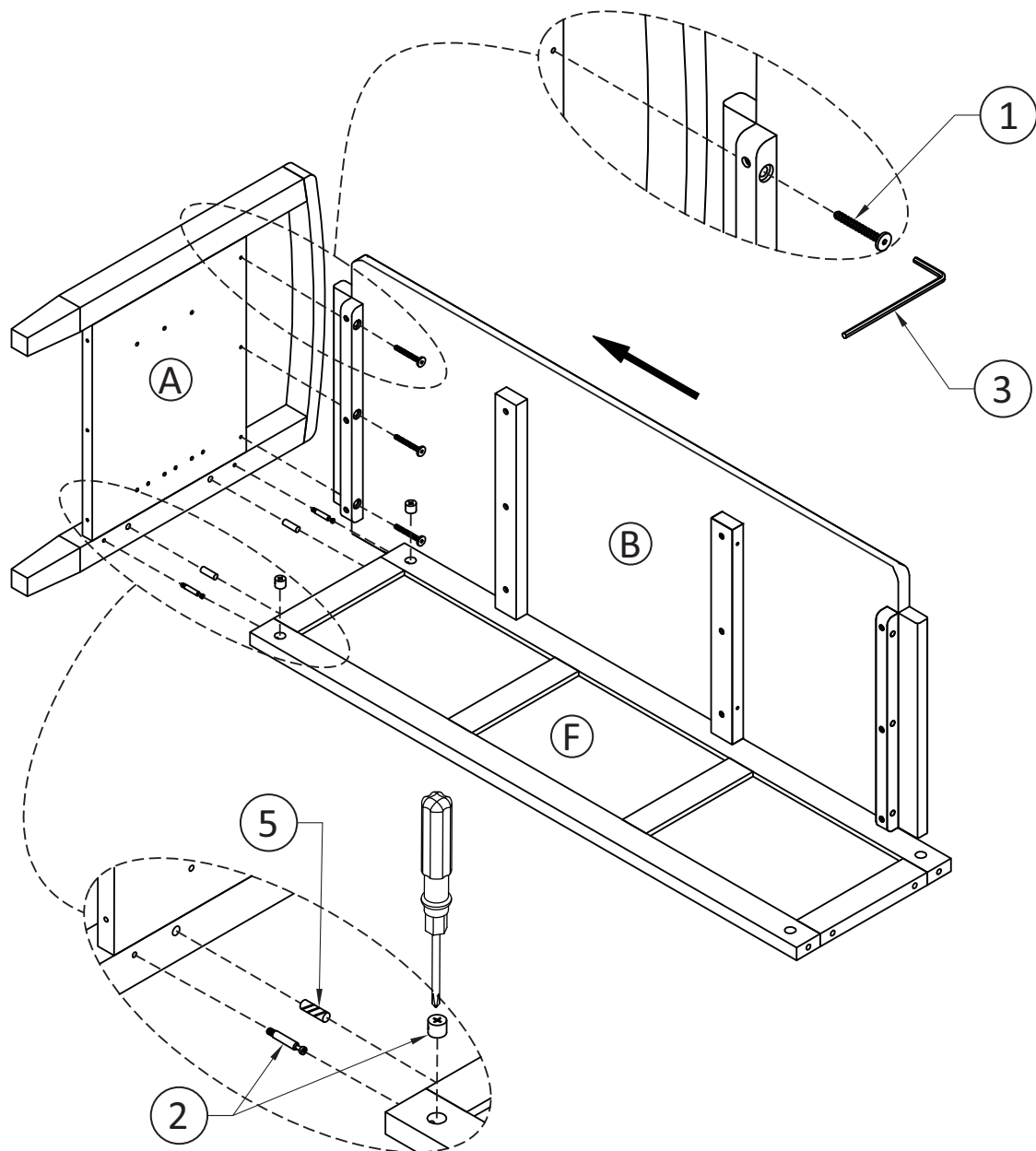


Required -
Flathead screwdriver
Phillips screwdriver
Rubber mallet
Not Included

NEED HELP? For help with assembly or if you are missing a part,
Please call customer service at 1-866-518-0120 ext. 262 (9 am to 4 pm EST)

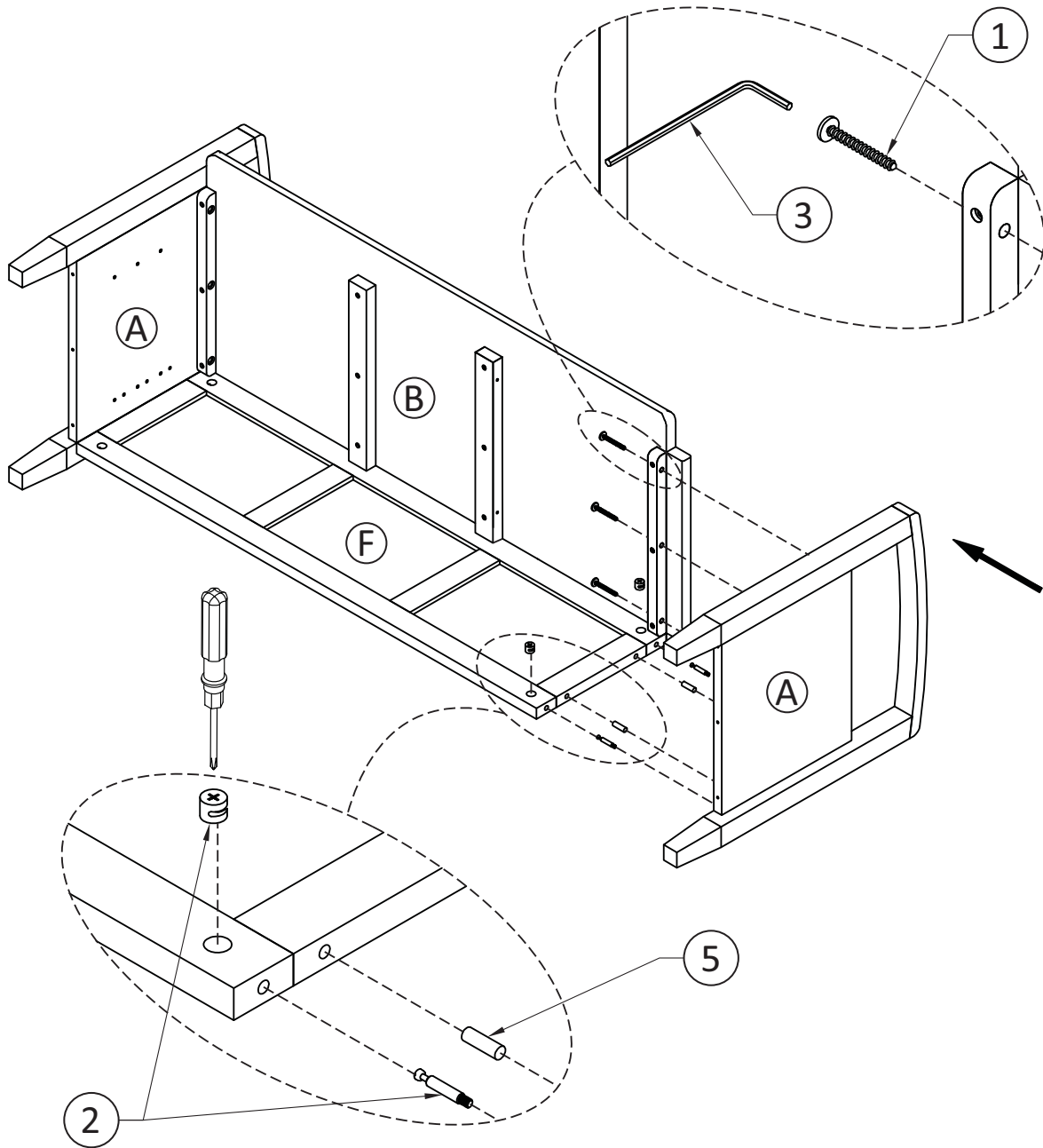


STEP 1



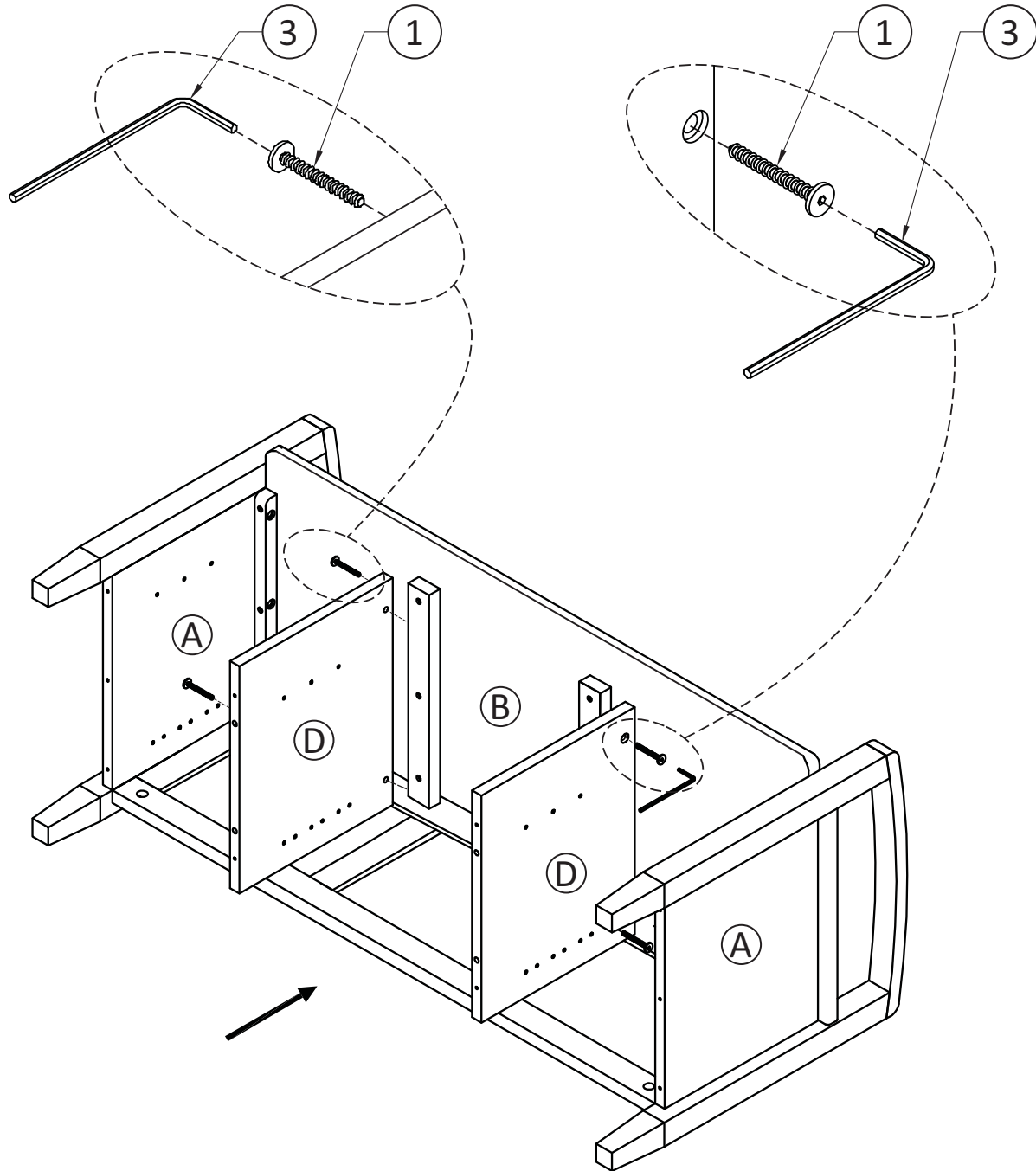
1. Insert four Dowels (5) into pre-drilled holes in the Back (F).
2. Use rubber mallet to tap Dowels (5) into bottom of holes securely. 1/2 length of Dowels should be exposed.
3. Attach Seat (B) to Side (A) using Allen Key Screws (1) through pre-drilled holes on Back (F).
4. Attach two Cam Lock Pins (2) to one Side (A) using guide holes.
5. Align and insert Cam Lock Pins on Side (A) into pre-drilled holes on Back (F).
6. Insert two Cam Locks (2) into pre-drilled holes on Back (F).
7. Using a flathead screwdriver to tighten Cam Locks into Pins.

STEP 2



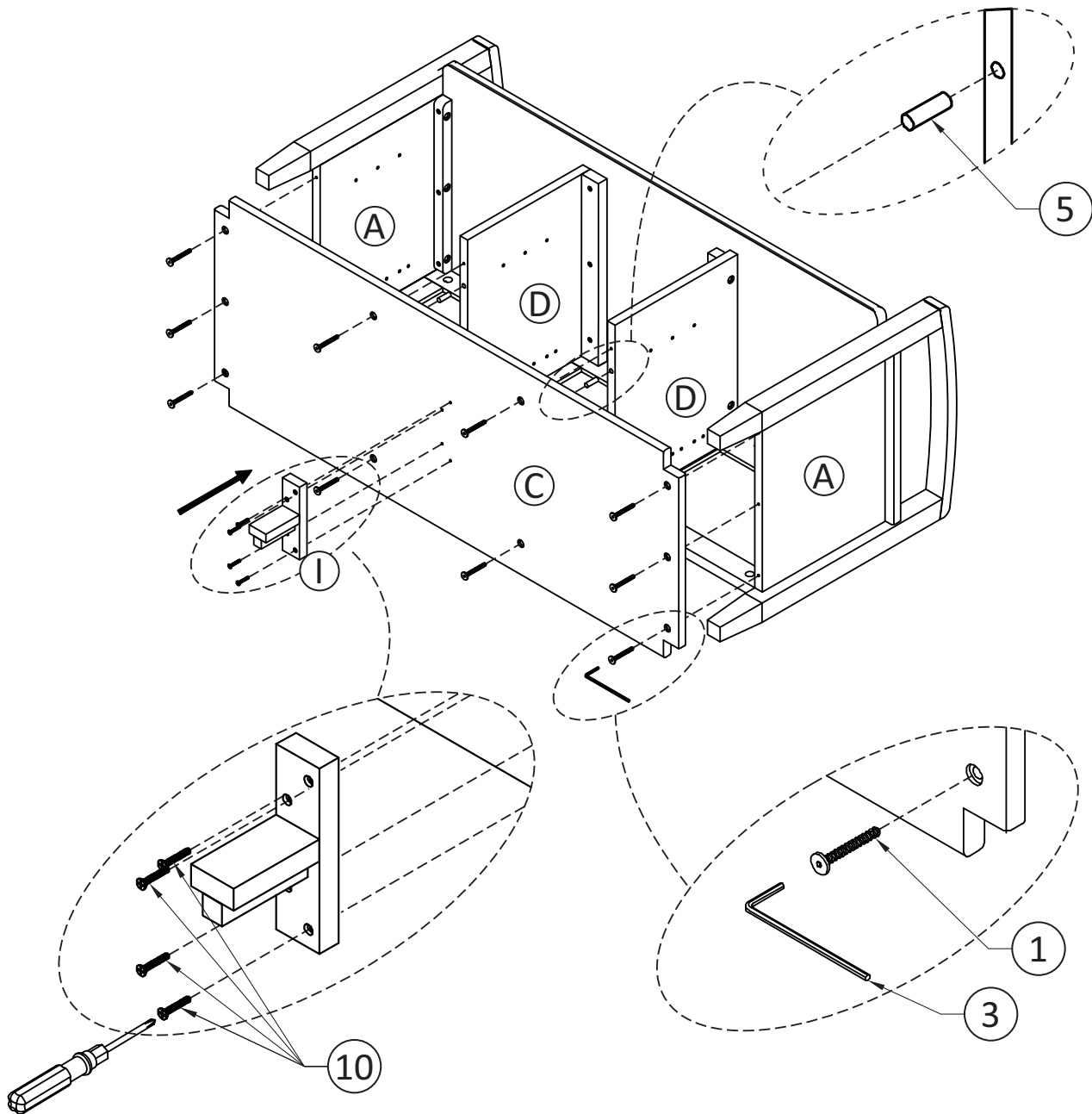
1. To attach opposite Side (A) to Seat (B) and Back (F), repeat steps 1.

STEP 3



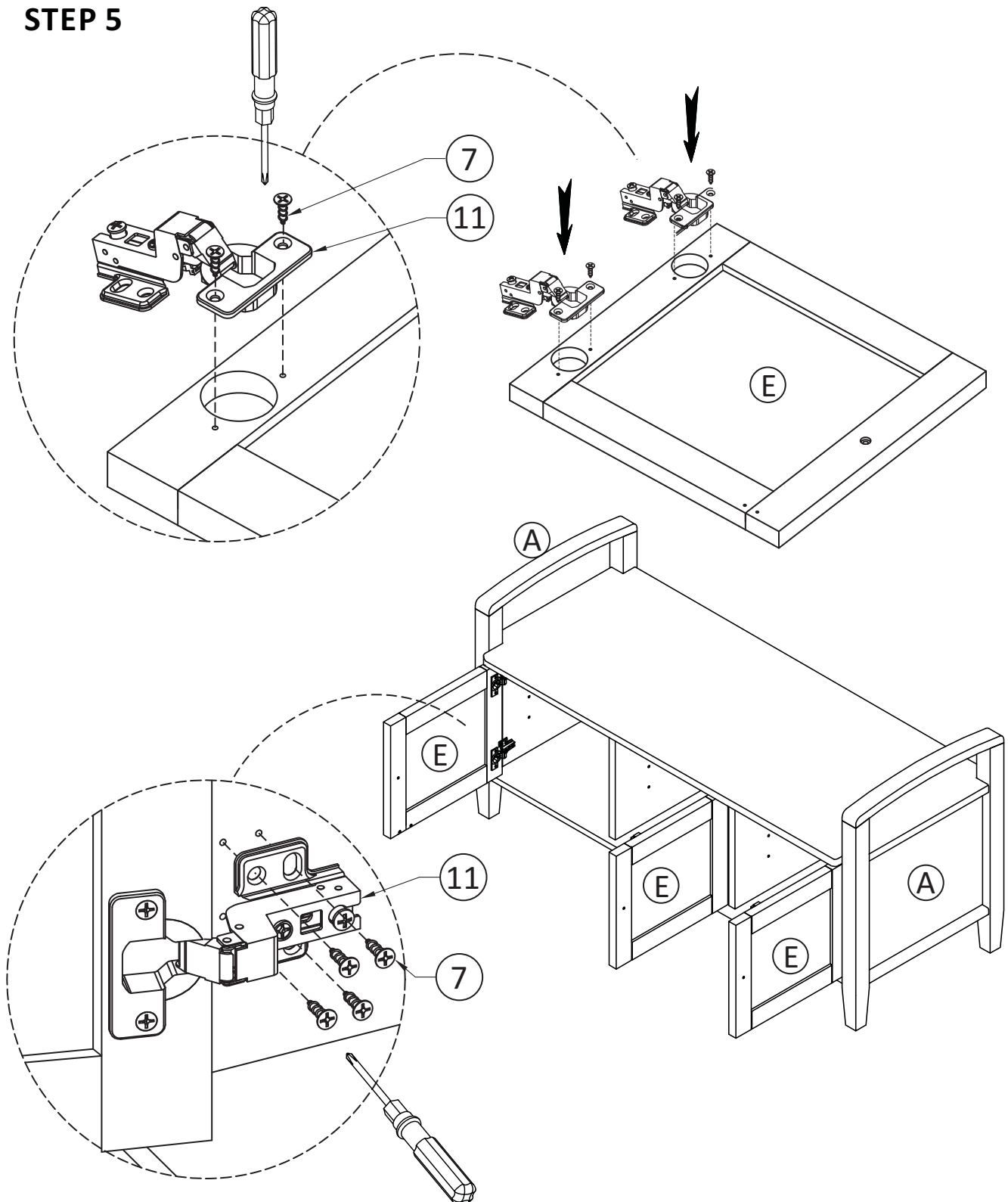
1. Attach Dividers (D) to Seat (B) using Allen Key Screws (1) through pre-drilled holes.

STEP 4

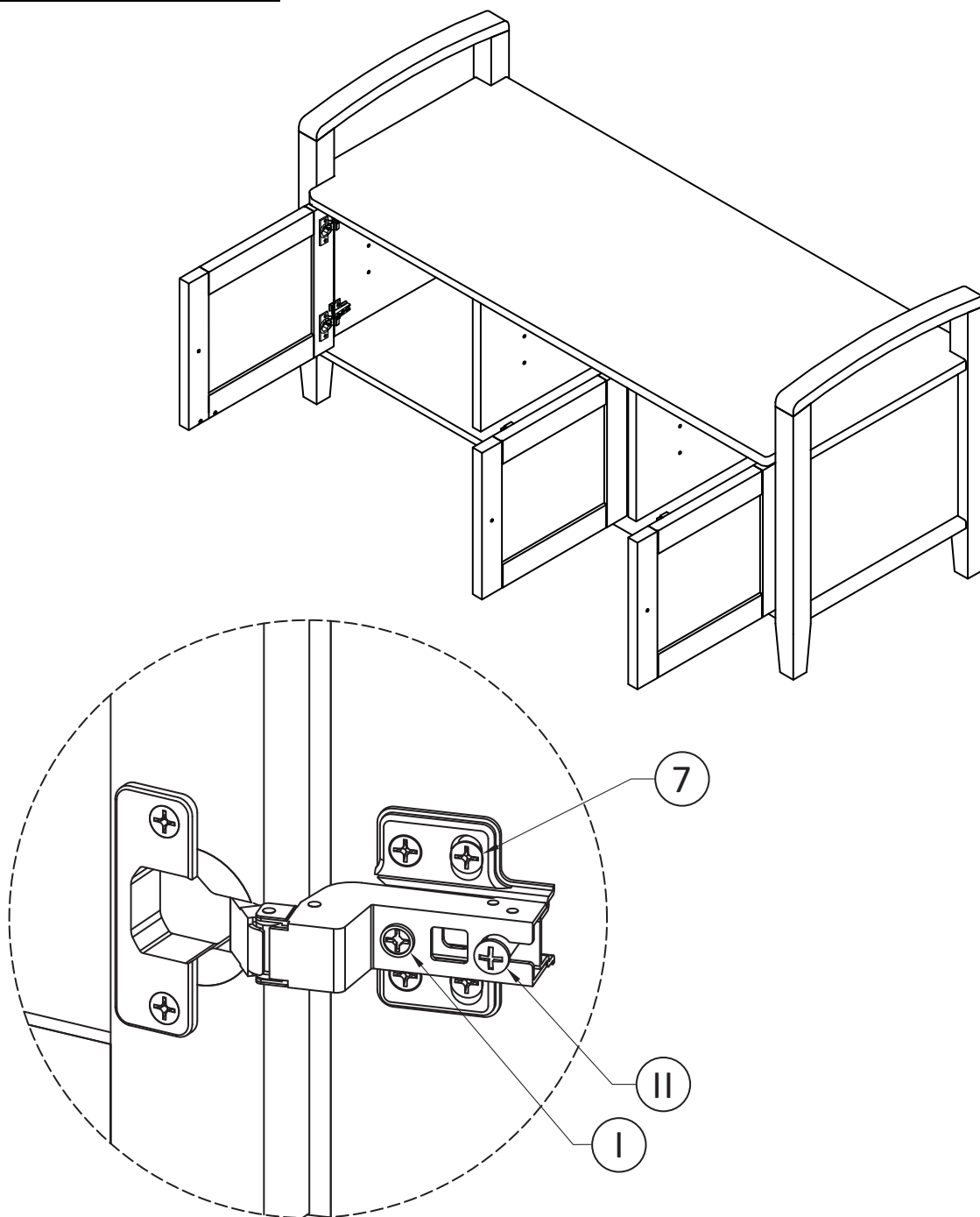


1. Insert two Wood dowels (5) into pre-drilled holes on each Divider (D).
2. Use rubber mallet to tap Dowels (5) into bottom of holes securely. 1/2 length of Dowels should be exposed.
4. Attach Bottom Shelf (C) to Sides (A) and Dividers (D) using Allen Key Screws (1) through pre-drilled holes.
5. Attach Bottom Support Leg (I) into pre-drilled holes of Bottom Shelf (C) using four Phillips Screws (10).
6. Use Phillips screwdriver to tighten Screws. Do not over-tighten.

STEP 5



1. Attach Adjustable Hinges (11) to Doors (E) using Phillips Screws (7) into guide holes on Doors (E).
2. Attach Adjustable Hinges on Doors (E) to Sides (A) using Phillips Screws (7) into guide holes on Sides (A).
3. Use a Phillips screwdriver to tighten screws. Do not over-tighten.

IMPORTANT NOTE:

Tighten the Screw marked (II) to fasten hinge. The door may need to be adjusted so that all the spaces between the door and the unit sides are equal. To adjust, follow instructions:

1. Side adjustment 4 mm

To move the door towards the side panel, loosen screw (I) and tighten screw (II) .

To move the door away from the side panel, loosen screw (II) and tighten screw (I) .

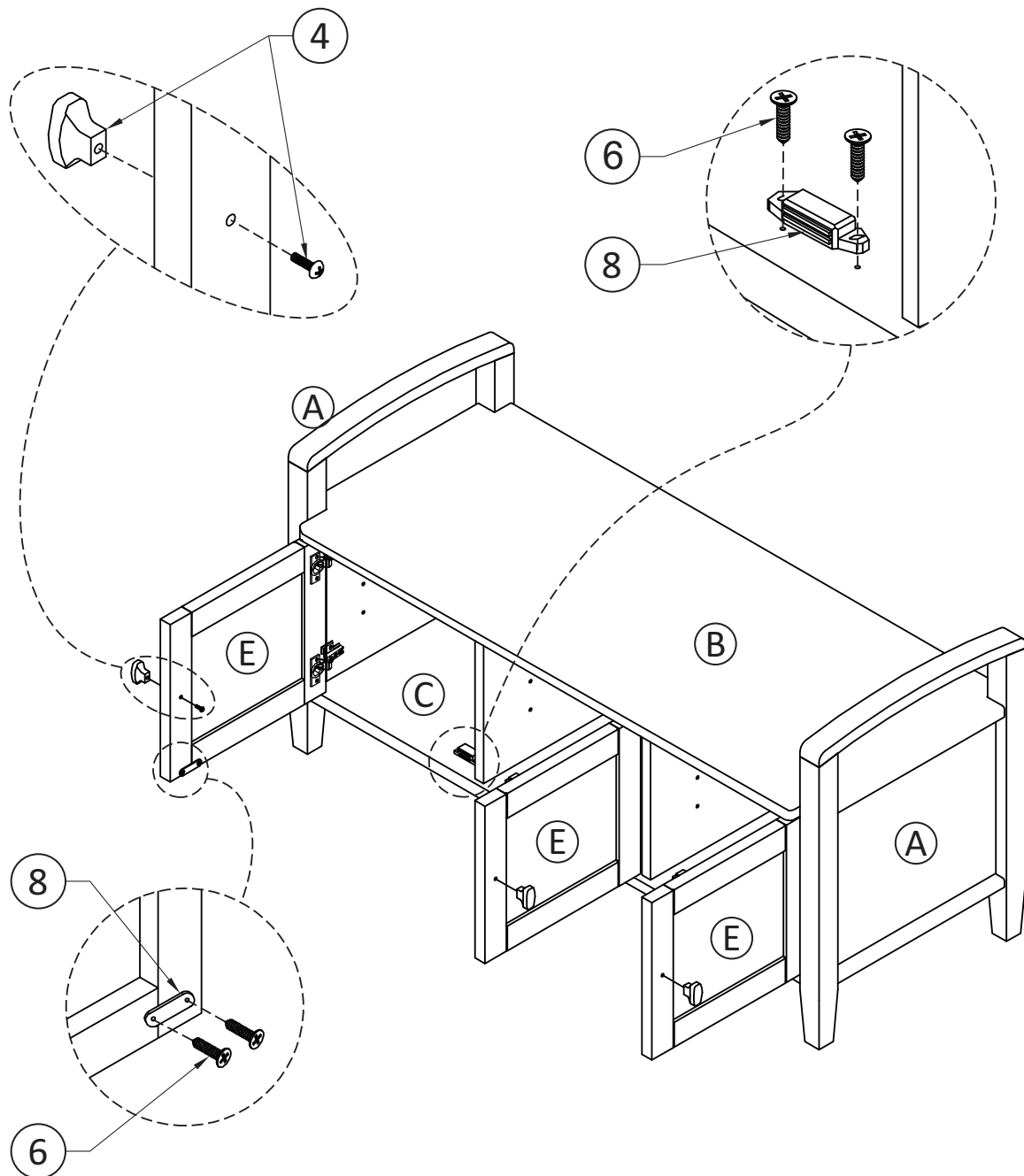
2. Depth adjustment 4 mm

Loosen screw (II) (just one turn), adjust door to desired position, re-tighten screw .

3. Height adjustment

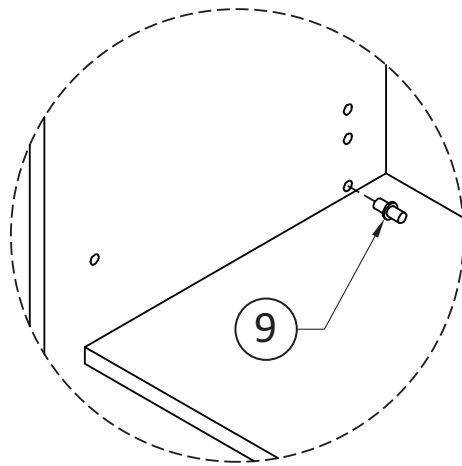
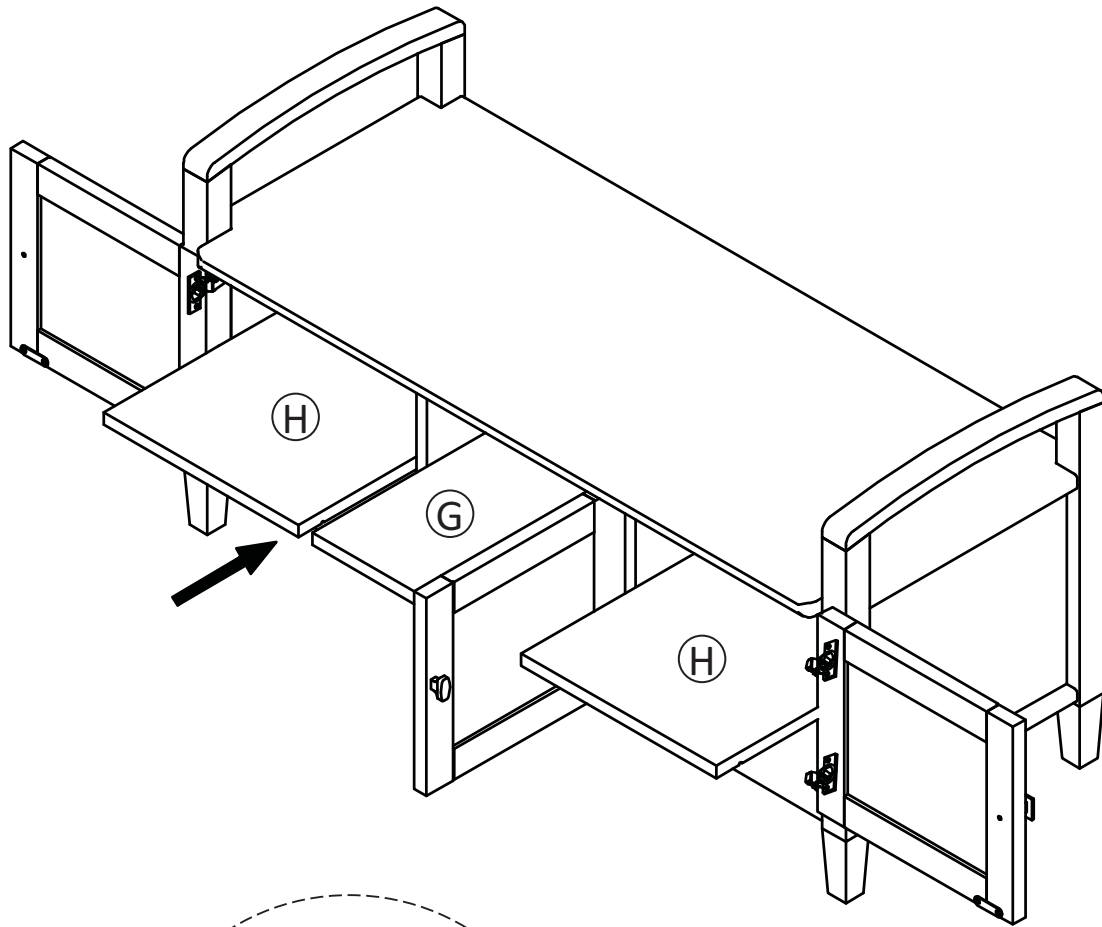
Loosen screw (7) , adjust door to desired position, re-tighten screw .

STEP 6



1. Attach Magnet Plates (8) to bottom corner of Doors (E) using Phillips Screws (6) into guide holes on Doors (E).
2. Attach Magnet (8) using Phillips Screws (6) into guide holes on Bottom Shelf (C).
3. Use a Phillips screwdriver to attach Handles (4) to Doors (E).

STEP 7



1. Use four Shelf Supports (9) for each Shelf (G) or (H) in desired location.
2. Two Shelf Supports (9) may be used on back top of each Shelf (G) or (H) as a tipping restraint.



WARRANTY

Thank you for purchasing a **Simpli Home – Wyndenhall – Brooklyn + Max** product. These products have been made to demanding, high-quality standards and are guaranteed for domestic use against manufacturing faults for a period of 12 months from the date of purchase. This warranty does not affect your statutory rights.

In case of any malfunction of your product (failure, missing parts, etc.) please contact us at our toll free service line at 1-866-518-0120 ext. 262 from 9 am to 4 pm, Monday to Friday, Eastern Standard Time or by email at simpli-home.com/customer-support.

We reserve the right to repair or replace the defective product, at its discretion.

This product is guaranteed for 12 months if used for normal purposes. Any warranty is invalid if the product has been overloaded or subject to neglect, improper use or an attempted repair by other than an authorized agent. Heavy-duty or daily professional/commercial usage are not guaranteed.

Due to continuous product improvement, we reserve the right to change the product specifications without prior notice.



Question, problems, missing parts?

Before returning your product
please email Customer Support at
simpli-home.com/customer-support

or call

Customer Support at 1-866-518-0120 ext. 262
Monday to Friday between 9 am – 4 pm EST

For more information visit us on our website
www.simpli-home.com

Like us on facebook
www.facebook.com/simplihomefurnishings