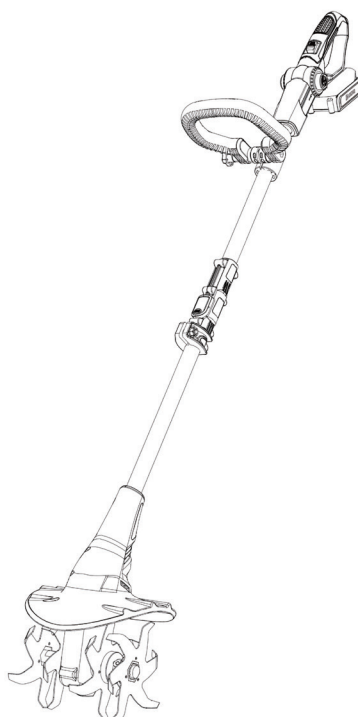


# Cordless Rotary Tiller User Manual

Model: **CT38601**



Customer Service  
Ukoke Tech  
E: [Service@ukoke.com](mailto:Service@ukoke.com)  
Te: (909)-606-4551

Customer Central: (Items Replacement)  
19575 East Walnut Drive South, Units C16& C17,  
City of Industry, California 91748.  
Te: (909)-606-4551

**Read the instructions thoroughly before operating the tool and keep this manual for future reference!**

**Contents**

User Manual.....1

Read the instructions thoroughly before operating the tool, and  
keep this manual for future reference .....1

TECHNICAL DATA.....3

INTENDED USE.....3

EXPLANATION OF SAFETY SYMBOLS.....3

SAFETY INSTRUCTIONS.....3

ASSEMBLY INSTRUCTIONS.....5

CHARGING THE BATTERY(Fig G).....11

MAINTENANCE.....13

# TECHNICAL DATA

Model	CT38601
Voltage	20VDC
Blade strokes (no load)	280 /min
Max. Working width(mm):	7.8''
Max. Working depth(mm):	5''
Battery type	Lithium-Ion
Battery capacity	2.5Ah
Working Time	45minute
Battery charging time	3-4 hours

## INTENDED USE

### For the Device:

This cordless rotary tiller has a quiet operation, and it starts immediately. It has been designed specifically for the garden, and you should not use it for any other purpose. It is used to prepare a garden plot for planting by breaking up the dirt and saves you from labor. Its operation is quite powerful and eco-friendly as it does not emit gases or odor. This tool is intended for domestic use only. It can be used in yards, gardens, or other areas where you need to perform planting.

### For the Charger:

It comes with a Lithium-ion battery with 45 minutes of run time. Give the battery a full charge before you start the tiller. It takes approximately 3-4 hours to charge it. Your charger has been designed for charging batteries of the type supplied with this tool. Do not use the charger to charge other batteries and charge the battery with other chargers.

### Applications of Cordless Rotary Tiller

It has max. 280 RPM and 24 steel angled tines can cultivate up to 7.8" wide and 5" deep. This device can cut through any hard clay or soil smoothly and provides unmatched versatility. You can use it not only to plow the soil but also to control the weed growth, so you get a beautiful garden.

## EXPLANATION OF SAFETY SYMBOLS



Warning!



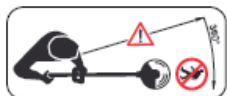
Do not use in rain or wet conditions.



Read the instruction manual before use



Always wear eye protection.



Keep bystanders away.

## SAFETY INSTRUCTIONS

**WARNING!** When using the machine, the safety rules must be followed. For your own safety and that of bystanders, please read these instructions before operating the machine. Please keep the instructions safe for later use.

### Safety instructions for cordless rotary tiller

#### Warnings - Do's

**Read and understand the owner's manual.** Pay particular attention to all sections regarding safety.

1. **Always keep a firm grip on both handles while the tines are moving.** BE AWARE!! The tines may coast after the triggers are released. Make sure tines have come to a complete stop before letting go of the tiller.
2. **Always maintain a firm footing and good balance.** Do not overreach while operating the tiller. Before you start to use the tiller, check the work area for obstacles that might cause you to lose your footing, balance or control of the machine.
3. **Thoroughly inspect the area where equipment is to be used and remove all objects, which can be thrown by the machine.**
4. **Always keep the area clear of children, pets, and bystanders.**
5. **Always stay alert. Watch what you are doing and use common sense.** Do not operate unit when fatigued.
6. **Always dress properly. Do not wear loose clothing or jewelry as they might get caught in moving parts.** Use sturdy gloves. Gloves reduce the transmission of vibration to your hands. Prolonged exposure to vibration can cause numbness and other ailments.
7. **While working, always wear substantial footwear and long trousers.** Do not operate the equipment when barefoot or while wearing open sandals.
8. **Always wear eye protection. Eye protection must meet ANSI Z 87.1.**
9. **Start the tiller carefully, according to the instructions on page 8.**
10. **Keep all nuts, bolts, and screws tight to be sure the equipment is in a safe working condition.**
11. **Use extreme caution when reversing or pulling the machine towards you.**
12. **Work only in daylight or good artificial light.**
13. **Always be sure of your footing on slopes.**
14. **Exercise extreme caution when changing direction on slopes.**
15. **Always keep a safe distance between two or more people when working together.**
16. **Always inspect your unit before each use and ensure that all handles, guards, and fasteners are secure, operating, and in place.** Be sure that all electrical cords are not damaged or broken.

17. **Always maintain and examine your tiller with care.** Follow maintenance instructions given in the manual.

18. **Always store tiller in a sheltered area (a dry place), not accessible to children.**

### **Warnings - Don'ts**

1. **Don't use tiller with one hand.** Keep both hands on handles with fingers and thumbs encircling the grips when the tines are moving?

2. **Don't overreach. Keep a good footing at all times.**

3. **Don't run with the machine, walk.**

4. **Don't work on excessively steep slopes.**

5. **Don't attempt to clear tines while they are moving.** Never try to remove jammed material before unplugging the cord and making sure the tines have stopped completely.

6. **Don't allow children or incapable people to operate this tiller.**

7. **Don't operate while under the influence of alcohol or drugs.**

8. **Don't attempt to repair this tiller.** Have repairs made by a qualified dealer or repairman. Make sure that only original MANTIS parts are used.

9. **Don't run the tiller in rain or wet conditions.**

## **ASSEMBLY INSTRUCTIONS**

### **For Your Safety**



**Warning! Remove the battery pack before cleaning the tool.**

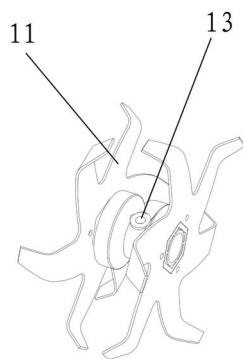


Fig.1

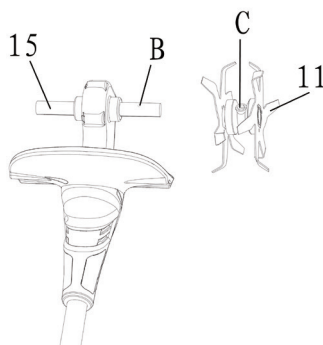


Fig.2

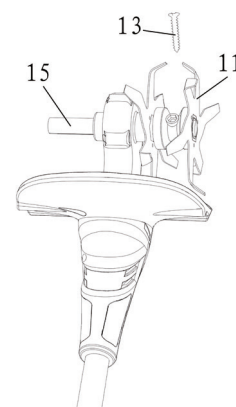


Fig.3

1. Remove hex socket screw 13 from blade component 11 using a hex socket wrench. (Fig1)
2. Install blade component 11 into rotating axis 15 in the direction of the arrow shown, and align hole B on rotating axis 15 with hole C on blade component 11. (Fig2)
3. Insert the hex socket screw 13 into holes C and B, and tighten the hex socket screw 13 using a hex socket wrench. (Fig3)
4. Install and secure the blade parts on the other side of axis 15 as described above.

### Insert/remove the battery pack (Fig A)

- ◆ Always release the On/Off switch before insertion or removal of the battery pack.
- ◆ To **remove** the battery pack, depress the button 1 on end of the battery pack, and then remove the pack 2 from the tool.
- ◆ To **insert** the battery pack, align the latches on both side of the battery cartridge with the groove in the housing and slip it into place. Always insert it all the way until it locks in place with a little click. If not, it may accidentally fall out of the tool, causing injury to you or someone around you.

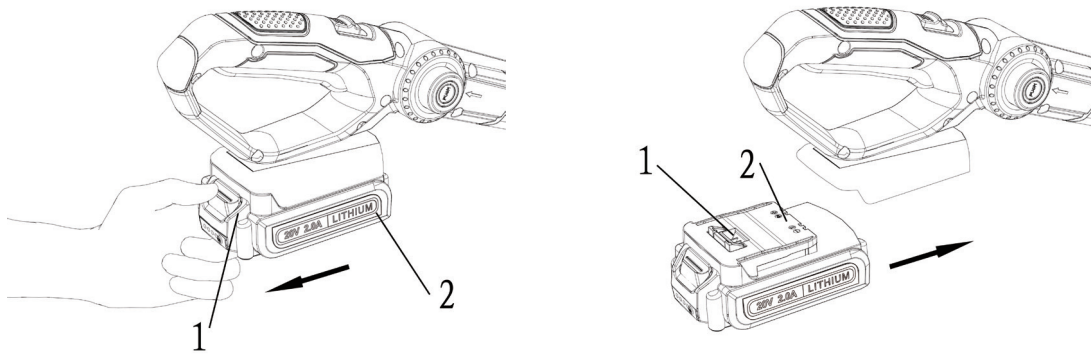


Fig.A

Do not use force when inserting the battery pack. If the cartridge does not slide in easily, it is not being inserted correctly.

### Attach adjustable handle (Fig B)

- Turn the handle knob (7) and the bolt (4) from the adjustable handle.
- Insert the adjustable handle (6) in the machine handle.
- Insert the bolt (4) and handle knob (7), and then turn the handle knob lightly tighten.
- Before tightening completely, turn the adjustable handle in the desired angle. When adjustable handle (6) is in the desired angle, tighten the handle knob (7) securely.

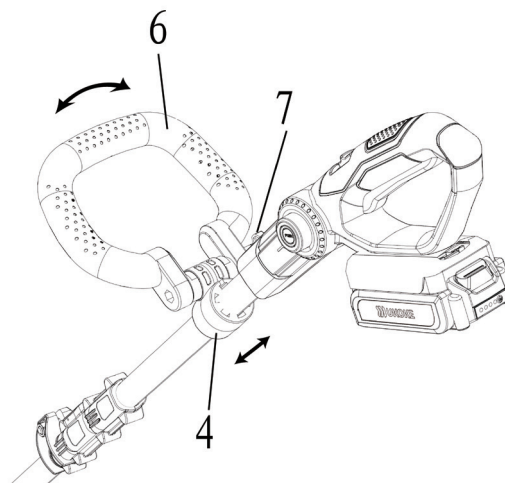


Fig.B

## OVERVIEW(FIG C)

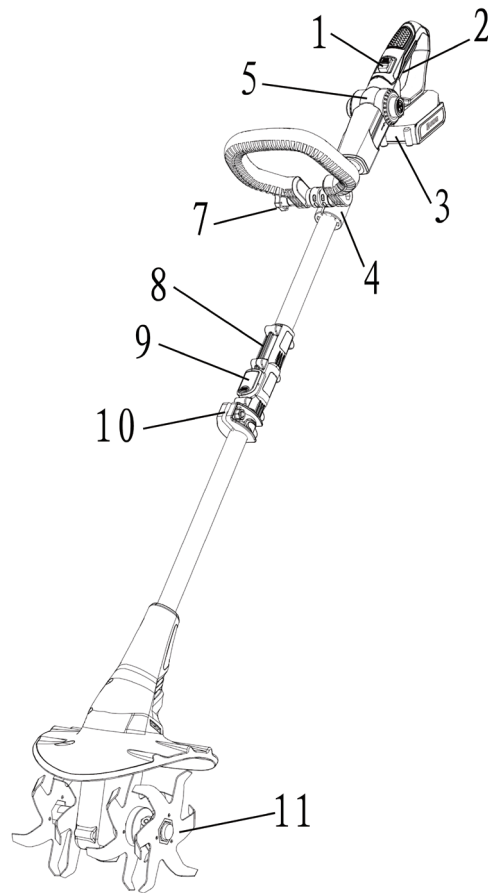


Fig.C

- 1. Lock-off button
- 2. On/off switch
- 3. Battery pack
- 4. Grip Area
- 5. lock Nut
- 6. Blade

### Setting the adjustable handle angle: (FIG E)

Loosen the handle knob (7) and turn adjustable handle (6) to the required angle. There are 7 working positions. You should turn the handle knob (7) tightly.

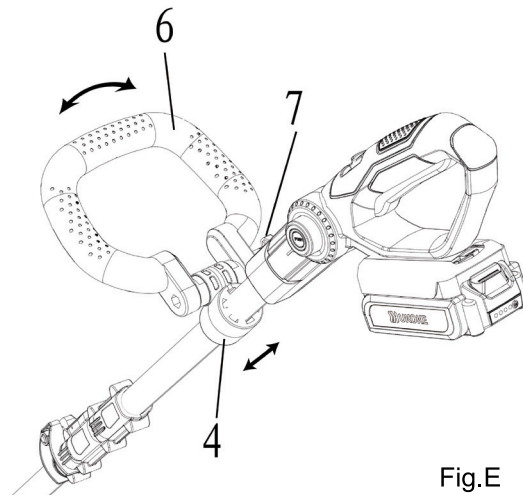


Fig.E

### Starting the Rotary Tiller: (FIG F)

#### Switching the Rotary Tiller on:

1. Press and hold the safety lock-off button (1) and then press the start button (2) on the handle.
2. Release the safety lock-off button (1) again.

#### Switching the Rotary Tiller off:

1. Release the start button (2) on the handle.

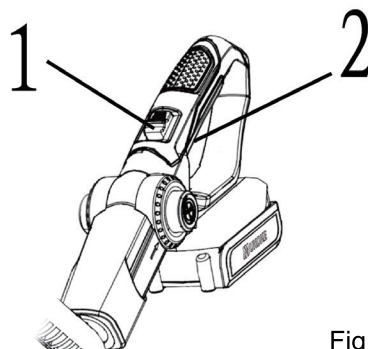


Fig.F



**RISK OF INJURY!** Cutting elements continue to rotate after the motor is switched off. Do not try to stop the cutting device (metal blade) with your hands. Always let it come to a stop by itself.

## CHARGING THE BATTERY (Fig G)

The battery needs to be charged before first use and whenever it fails to produce sufficient power on jobs that were easily done before.

The battery may become warm while charging; this is normal and does not indicate a problem.

**NOTE: After several charge and discharge cycles, the battery will attain full capacity.**

DO NOT CHARGE THE BATTERY AT AMBIENT TEMPERATURES BELOW 4°C OR ABOVE 40°C.

RECOMMENDED CHARGING TEMPERATURE: APPROX. 24°C.

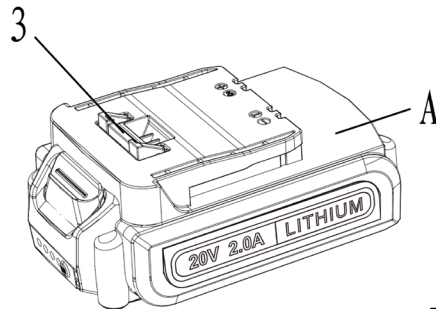


Fig.G

1, Plug the main plug (14) of the adaptor into a suitable socket outlet; plug the other end of the adaptor into the battery pack (into a small round socket). The green LED light on the battery is blinking while charging and becomes full ON when fully charged;

**Attention! It may not be charged if you are charging the battery immediately after using the machine. The battery pack should be cooled for a period of time. The LED lights on the battery turn from green to red which means it can be charged.**

(4). The battery pack will be fully charged in about 4 hours. And the LED lights become full on green when fully charged.

## Important charging notes

Longest life and best performance can be obtained if the battery pack is charged when the air temperature is between 18-24 °C. Do not charge the battery pack in a very low or very high air temperature. This is important and will prevent serious damage to the battery pack.

**1. When using your tool continuously, the batteries in your battery pack will become hot. You should let a hot battery pack cool down for approximately 30 minutes before attempting to recharge.**

2. The charger and battery pack may become warm to touch while charging. This is a normal condition and does not indicate a problem.

3. Use the charger in normal room temperatures whenever possible. To prevent overheating, do not cover the charger and do not charge battery packs in direct sunlight or near heat sources.

4. If the battery pack does not charge properly – (1) check current at receptacle by plugging in a lamp or other appliance. (2) Move charger and battery pack to a location where the surrounding air temperature is approximately 18-24 °C. (3) If charging problems persist, take or send the tool, battery pack, and charger to your local service center.

5. The battery pack should be recharged when it fails to produce sufficient power on jobs which were easily done previously. DO NOT CONTINUE to use under these conditions. Follow the charging procedure. You may also charge a partially used pack whenever you desire with no adverse effect on the battery pack.

6. Under certain conditions, with the charger plugged into the power supply, the exposed charging contacts inside the charger can be shorted by foreign material. Foreign materials of a conductive nature such as, but not limited to, steel wool, aluminum foil, and any buildup of metallic particles should be kept away from charger cavities. Always unplug the charger from the power supply when there is no battery pack in the cavity. Unplug charger before attempting to clean.

7. Do not immerse charger in water or any other liquid.

8. **WARNING!** Don't allow any liquid to get inside the charger. Otherwise, electric shock may be experienced. To facilitate the cooling of the battery pack after use, avoid placing the charger or battery pack in a warm environment such as in a metal shed, or an uninsulated trailer.

9. **CAUTION!** Never attempt to open the battery pack for any reason. If the plastic housing of the battery pack breaks or cracks, return it to a service center for recycling; do not put it into further use.

## MAINTENANCE

1. After use, remove the battery pack from the tiller;

2. When not in use, store the machine out of the reach of children;

3. Use only manufacturer-recommended replacement parts and accessories;

4. To clean the tool, remove the battery pack and use only mild soap and a damp cloth to clean the tool. Do not immerse the tool in water or squirt it with a hose. Please do not allow any liquid to get inside it. Do not clean with a pressure washer.

# TROUBLESHOOTING

1. **Tool runs slowly**
  - Check that the tiller can rotate freely. Carefully clean it if necessary.
2. **If the rotary tiller is not cutting properly**
  - Check the condition of the tiller if any component is damaged.
  - Note: Do not use a damaged rotating tiller.
3. **If the tiller does not operate:**
  - Check battery pack assembly;
  - Charge the battery: operation of the tiller depends on sufficient charge in the battery pack.
4. **If the battery will not charge**
  - Check to see if the battery is properly inserted into the charger base, and make sure the indicator light is on. If not, check the power supply to the socket used for the charger plug.
5. **If a fault is suspected, return the cordless rotary tiller to an authorized dealer for repair.**

## ENVIRONMENTAL PROTECTION



Waste electrical products should not be disposed of with household waste. Please recycle where facilities exist.  
Check with your Local Authority or retailer for recycling advices.



### **WARNINGS!**

**This Product May Contain A Chemical Known  
To The State of California To Cause Cancer, Or  
Birth Defects Or Other Reproductive Harm.**

### **PARTS AND SERVICE:**

- ♦ **HOW TO OBTAIN REPLACEMENT PARTS:** A replacement parts list is available online at [Ukoke.com](http://Ukoke.com)/[Amazon.com](http://Amazon.com)/[Walmart.com](http://Walmart.com)/[newegg.com](http://newegg.com).. Replacement parts can be purchased online or by calling Ukoke Customer specialist (909)-606-4551 or by Email:[Service@ukoke.com](mailto:Service@ukoke.com)
- ♦ **HOW TO LOCATE A RETURN CENTER:** Return centers can be located at 19575 East Walnut Drive South, Units C16, City of Industry, California 91748. Ukoke Customer specialist (909)-606-4551 or by Email:[Service@ukoke.com](mailto:Service@ukoke.com)

# WARRANTY

UKOKE TECH INC., warrants to the original retail purchaser that this UKOKE™ brand outdoor product is free from defect in material and workmanship and agrees to repair or replace, at UKOKE TECH INC.'s, discretion, any defective product free of charge within these time periods from the date of purchase.

One year if the product is used for personal, family or household use; this warranty extends to the original retail purchaser only and commences on the date of the original retail purchase. Any part of this product found in the reasonable judgment of UKOKE TECH INC. to be defective in material or workmanship will be repaired or replaced without charge for parts and labor by an authorized service center for UKOKE™ brand outdoor products.

The product, including any defective part, must be returned to an authorized UKOKE service center within the warranty period. The expense of delivering the product to the service center for warranty work and the expense of returning it back to the owner after repair or replacement will be paid by the owner. UKOKE TECH INC.'s, responsibility in respect to claims is limited to making the required repairs or replacements and no claim of breach of warranty shall be cause for cancellation or rescission of the contract of sale of any UKOKE™ brand outdoor product. Proof of purchase will be required by the dealer to substantiate any warranty claim. All warranty work must be performed by an authorized service dealer.

This warranty is limited to ninety (90) days from the date of original retail purchase for any UKOKE™ brand outdoor product that is used for rental or commercial purposes, or any other income-producing purpose. This warranty does not cover any product that has been subject to misuse, neglect, negligence, or accident, or that has been operated in any way contrary to the operating instructions as specified in this operator's manual. This warranty does not apply to any damage to the product that is the result of improper maintenance or to any product that has been altered or modified. The warranty does not extend to repairs made necessary by normal wear or by the use of parts or accessories which are either incompatible with the UKOKE™ brand outdoor product or adversely affect its operation, performance, or durability. In addition, this warranty does not cover:

Carburetor Adjustments, Ignition, Filters  
Wear items – Bump Knobs, Outer Spools, Cutting Lines, Inner Reels, Starter Pulleys, Starter Ropes, Drive Belts, Tines, Felt Washers, Hitch Pins, Mulching Blades, Blower Fans, Blower and Vacuum Tubes, Vacuum Bag and Straps, Guide Bars, Saw Chains

ALL IMPLIED WARRANTIES ARE LIMITED IN DURATION TO THE STATED WARRANTY PERIOD. ACCORDINGLY, ANY SUCH IMPLIED WARRANTIES INCLUDING MERCHANTABILITY, FITNESS FOR A PARTICULAR PURPOSE, OR OTHERWISE, ARE DISCLAIMED IN THEIR ENTIRETY AFTER THE EXPIRATION OF THE APPROPRIATE ONE-YEAR OR NINETY-DAY WARRANTY PERIOD. UKOKE TECH INC.'S, OBLIGATION UNDER THIS WARRANTY IS STRICTLY AND EXCLUSIVELY LIMITED TO THE REPAIR OR REPLACEMENT OF DEFECTIVE PARTS AND UKOKE TECH INC., DOES NOT ASSUME OR AUTHORIZE ANYONE TO ASSUME FOR THEM ANY OTHER OBLIGATION. SOME STATES DO NOT ALLOW LIMITATIONS ON HOW LONG AN IMPLIED WARRANTY LASTS, SO THE ABOVE LIMITATION MAY NOT APPLY TO YOU. UKOKE TECH INC., ASSUMES NO RESPONSIBILITY FOR INCIDENTAL, CONSEQUENTIAL, OR OTHER DAMAGES INCLUDING, BUT NOT LIMITED TO, EXPENSE OF RETURNING THE PRODUCT TO AN AUTHORIZED UKOKE SERVICE CENTER AND EXPENSE OF DELIVERING IT BACK TO THE OWNER, MECHANIC'S TRAVEL TIME, TELEPHONE OR TELEGRAM CHARGES, RENTAL OF A LIKE PRODUCT DURING THE TIME WARRANTY SERVICE IS BEING PERFORMED, TRAVEL, LOSS OR DAMAGE TO PERSONAL PROPERTY, LOSS OF REVENUE, LOSS OF USE OF THE PRODUCT, LOSS OF TIME, OR INCONVENIENCE. SOME STATES DO NOT ALLOW THE EXCLUSION OR LIMITATION OF INCIDENTAL OR CONSEQUENTIAL DAMAGES, SO THE ABOVE LIMITATION OR EXCLUSION MAY NOT APPLY TO YOU.

This warranty gives you specific legal rights, and you may also have other rights which vary from state to state.

This warranty applies to all UKOKE™ brand outdoor products manufactured by or for UKOKE TECH INC., and sold in the United States and Canada.