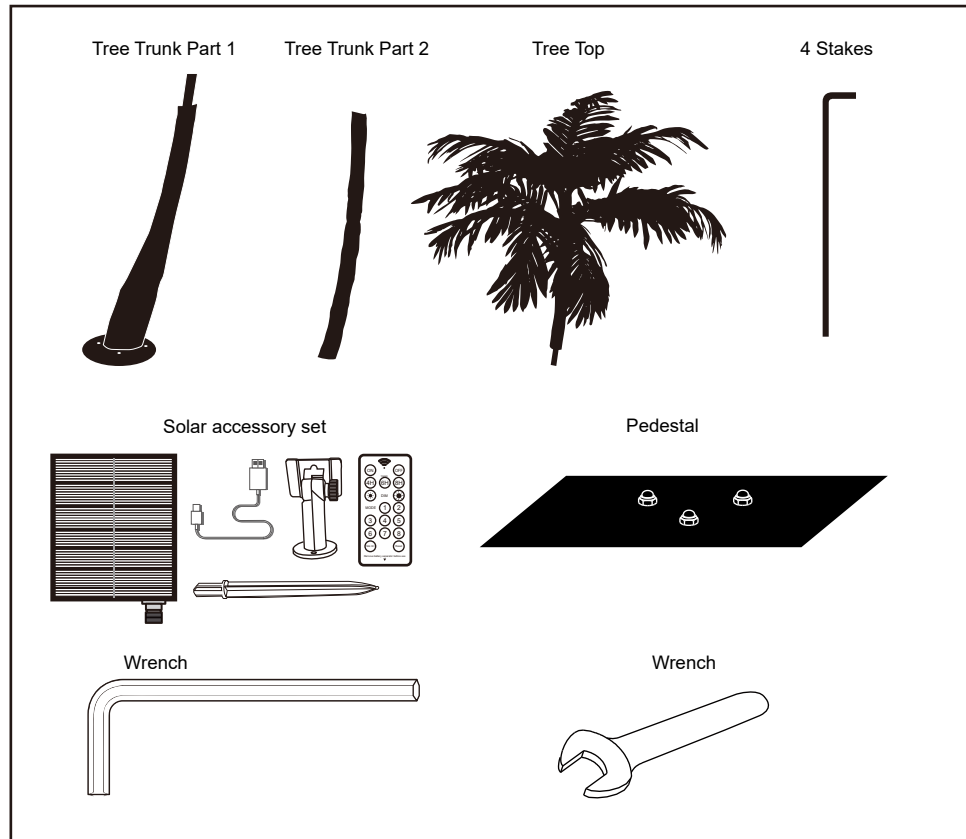


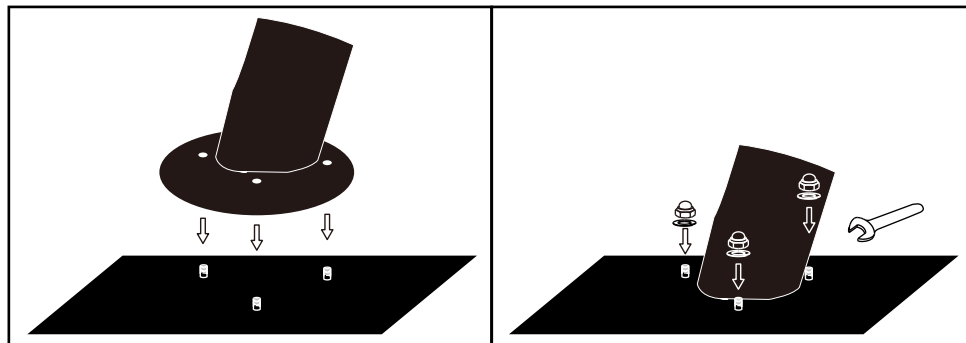
INSTRUCTION

DIRECTION FOR INSTALLATION

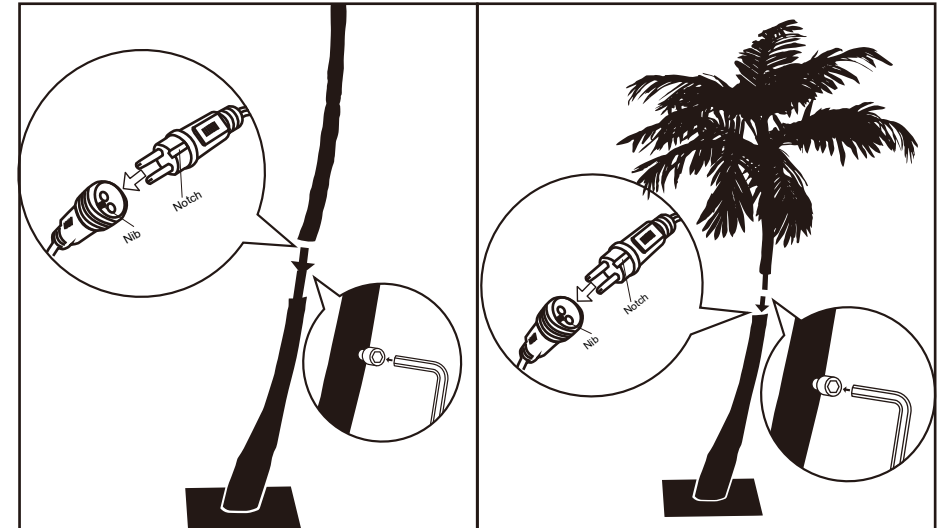
1. Take out the product carefully.



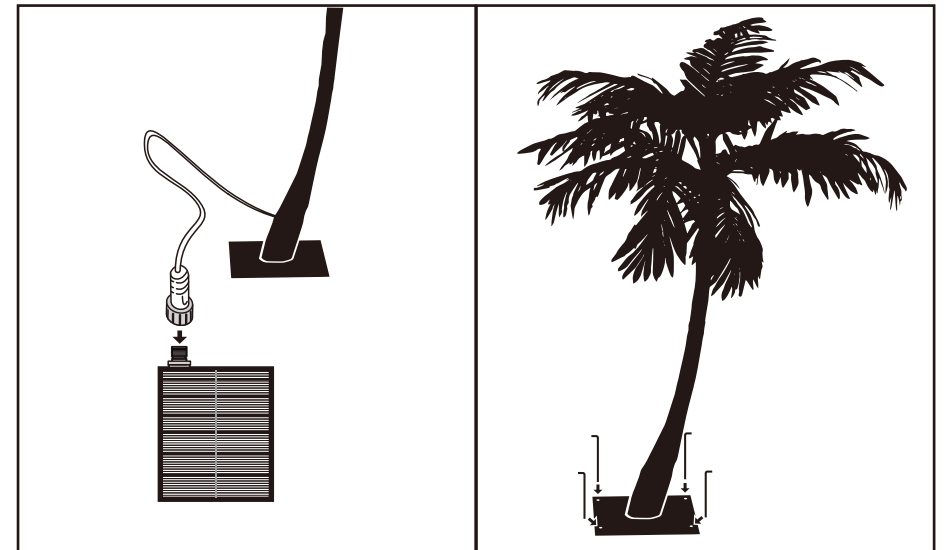
2. Adjust the trunk to fit the nuts on the base and fix it with screws by wrench included.



3. Find the wire joints inside the upper & bottom trunks. Connect the joints, insert the upper trunk into the bottom one and fix the trunk with the screw preinstalled by Allen wrench.



4. Connect with the Solar Panel. Fix the base by ground stakes.



5. Wrap the light string around the tree trunk from the tree top to the bottom. Spread the leaves to make it look full at your own choice.

Important Notes:

This product is not designed to withstand strong winds, please keep the product sheltered on extreme weather. Please be aware of the notch when connecting the wire between the top part and the bottom part.

IMPORTANT SAFETY INSTRUCTIONS

1. Please read and follow all instructions and warnings on the instructions and product carefully before using.
2. Retain the instruction for future reference.
3. This product should be used only as intended.
4. For indoor/outdoor use.
5. Do Not mount and place near gas, electric heaters, fireplaces, candles or other similar sources of heat.
6. Do not secure the wires with staples, nails, or anything sharp which may cut the wire and insulation.
7. This is an electric product, not a toy! To avoid risk of fire, burns, personal injury and electric shock, it should not be played with or placed where children can reach it.
8. Avoid the product and extension cords being caught by doors or windows, which may damage the wire and insulation.

TROUBLESHOOTING

1. Whole tree doesn't light up:
First, please check if the components have been connected normally.
Second, check the solar panel has been connected properly and is charged, or you can charge it with the charging cable included.
2. One or more of the branches doesn't light up:
Please check each bulb on the unlighted branch has been well welded by toughing slightly, or bending the branch slightly. If it doesn't work please follow step 3.
3. Any problem not mentioned above or unsolved:
Please contact us at service@ehomeinc.com for assistance.

WARRANTY

Lightshare guarantees that this product is free of defect in material and workmanship, and provides a one-year limited hardware warranty for the product commencing from the date of purchase. Please keep your receipt for proof of purchase. This product is designed for light or decoration usage only. Using this device in any other capacity voids the warranty. The warranty offered covers normal use. Defect or damage that result from improper operation, storage, misuse or abuse, accident or neglect, which are not the fault of Lightshare, are excluded from warranty coverage.

WARNING!

- This product contains small parts that may cause suffocation if swallowed by children.
- The product is not a toy, supervise children when using the lights.

FAQ

- Q: How many times can each branch be bent?
A: Please do not bend each branch more than 5 times, high-frequency bend will loose the connection between branches and also affect the appearance. If there is a loose, you are advised to bind it with an electrical tape in similar color of branches.
- Q: If one of lights doesn't work, will it affect the others?
A: No, the other lights will not be affected and could work normally.

Distributed by E HOME INTERNATIONAL INC.
725 Old Norcross Rd. Ste D, Lawrenceville, GA 30046
Customer Service Line: (888) 997-9468
www.ehomeinc.com
service@ehomeinc.com



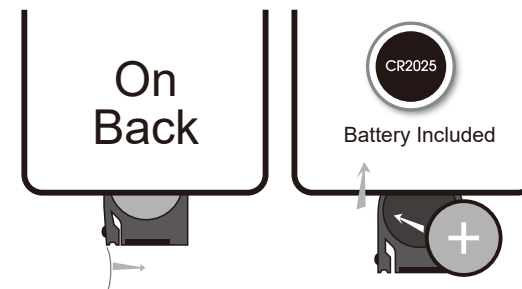


- ON (Note: Please keep is "ON" if working needed)
- Mode adjustment key (Long press for 3 seconds to switch brightness)
- Remote receiver
- Output indicator light

MODE INTRODUCTION

1. Combination
2. In waves
3. Sequential
4. Slo Glo
5. Chasing / Flash
6. Slow fade
7. Twinkle / Flash
8. Steady on

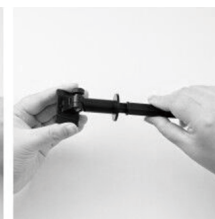
Replace the battery of the remote control.



Note:

It is recommended to operate remote control within Seventeen (17) feet with no block to IR receiver.

Installation instructions



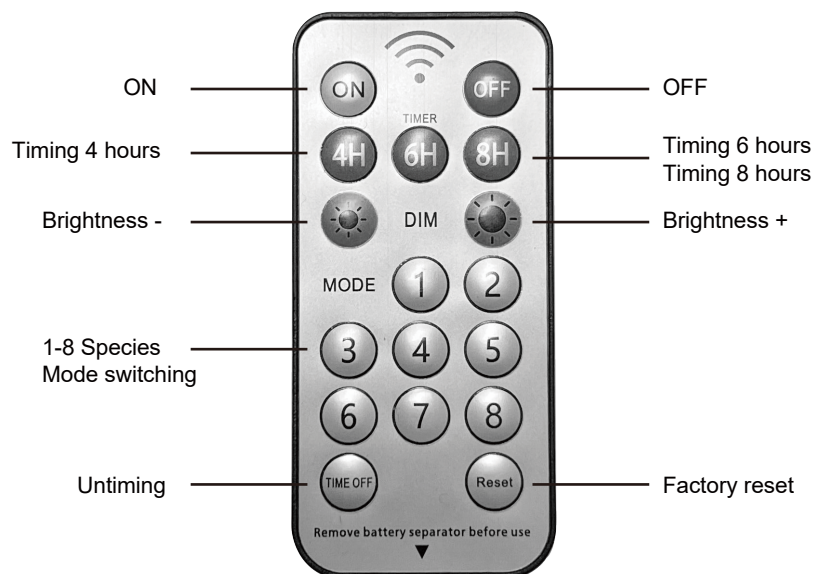
1. Take out the bracket and connect it

2. Combine the bracket with the controller



3. Install the product according to the picture

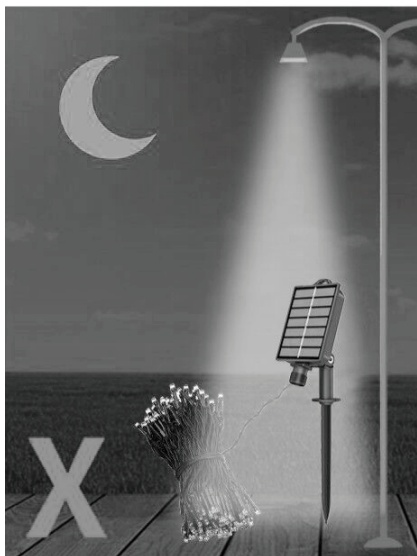
REMOTE CONTROL



ATTENTIONS:



Charging during the day, please make sure nothing cover the solar panel, Whether or not it will affect the charging effect of solar energy, and affect the lighting time and brightness.



Make sure there is no strong light on the solar panel after dark, Whether or not it will enter charging mode, and the lights will not work.

Distributed by E HOME INTERNATIONAL INC.
725 Old Norcross Rd. Ste D, Lawrenceville, GA 30046
Customer Service Line: (888) 997-9468
www.ehomeinc.com
service@ehomeinc.com

