



HAMPTON BAY®

CABINET SPECIFICATIONS

August 2022



 **MASTERBRAND®**
CABINETS, INC.

TAKE HOME TODAY
OR SHIPS WITHIN 7 DAYS



Why Hampton Bay

Fashionable. Fully Assembled.

Hampton Bay's affordable cabinetry offering includes fashionable, fully assembled products. Available in stock or shipping within seven days. Choose Hampton Bay cabinets to tackle any quick projects, including kitchens, bathrooms, laundry rooms, and more!



In-Stock — Take Home Today

Create your design from our in-stock selection and take them home today.



Hampton Bay Direct

Ships within 7 days of your order for delivery to your local Home Depot store. Available via Special Order and Quote Center.

**Limited
Lifetime
Warranty**

**We stand behind our product and
will back your purchase with a
Limited Lifetime Warranty.**



HINGES

Adjustable hinges allow for perfectly aligned doors.



SHELVES

3/4 in. thick adjustable shelves hold heavier items without sagging.



DRAWERS

All wood drawers hold weight up to 75 pounds.



FULL CABINET BACK

3/8 in. solid back panel offers easy installation & long-lasting stability.



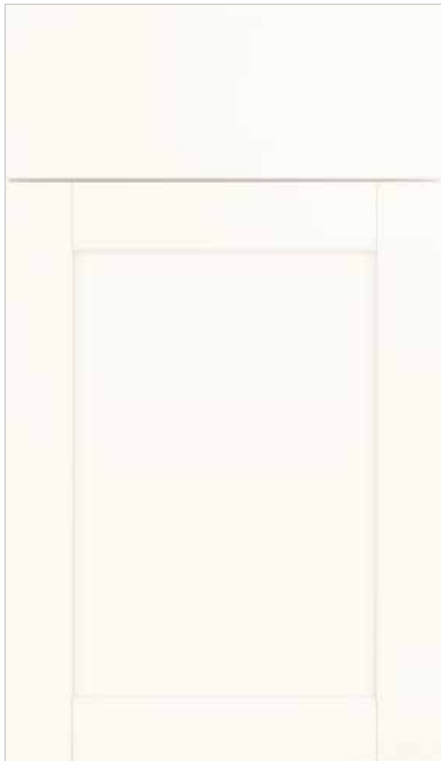
NO CENTER STILE

No center stile allows full access to cabinet contents.



**HIGH QUALITY
CONSTRUCTION**

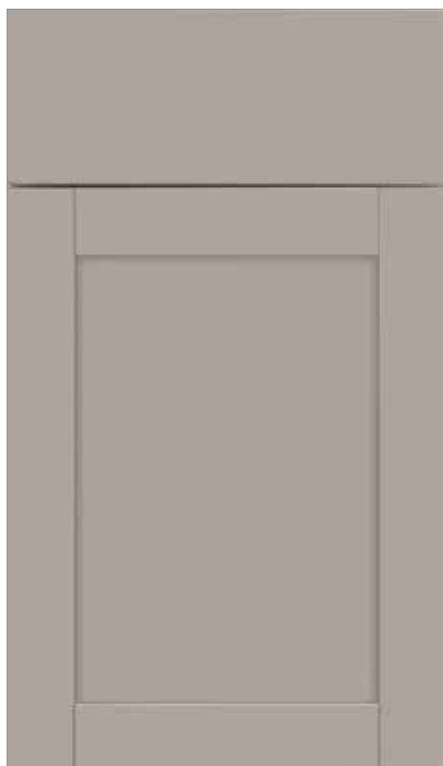
3/8 in. thick cabinet sides & solid wood frames offer durability & beauty.



Westfield Shaker

FEATHER WHITE

-
- ✓ Fashionable style with timeless appeal
 - ✓ Durable, easy to clean DLV finish that won't delaminate or discolor
 - ✓ Recessed panel Shaker door with slab drawer front
 - ✓ Full overlay design
 - ✓ Fully assembled for hassle-free installation
 - ✓ Limited Lifetime Warranty



Westfield Shaker

DUSK GRAY

-
- ✓ Fashionable style with timeless appeal
 - ✓ Durable, easy to clean DLV finish that won't delaminate or discolor
 - ✓ Recessed panel Shaker door with slab drawer front
 - ✓ Full overlay design
 - ✓ Fully assembled for hassle-free installation
 - ✓ Limited Lifetime Warranty

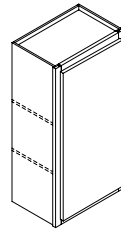
30" Wall



SINGLE DOOR

30" HEIGHT, 12" DEPTH

| WIDTH | SKU | IN STOCK & SPECIAL ORDER | SPECIAL ORDER ONLY |
|-------|--------|--------------------------|--------------------|
| 9" | W0930R | | ✓ |
| 12" | W1230R | ✓ | |
| 15" | W1530R | ✓ | |
| 18" | W1830R | ✓ | |
| 21" | W2130R | | ✓ |
| 24" | W2430R | ✓ | |



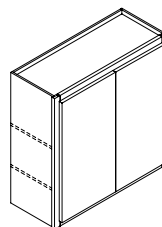
- 2 full-depth adjustable shelves
- Standard close
- 6-way adjustable hinges
- Finished sides



DOUBLE DOOR

30" HEIGHT, 12" DEPTH

| WIDTH | SKU | IN STOCK & SPECIAL ORDER | SPECIAL ORDER ONLY |
|-------|--------|--------------------------|--------------------|
| 27" | W2730B | | ✓ |
| 30" | W3030B | ✓ | |
| 36" | W3630B | ✓ | |



- 2 full-depth adjustable shelves
- Standard close
- 6-way adjustable hinges
- Finished sides

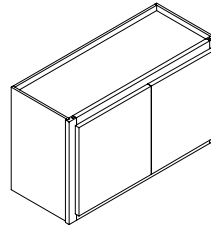
12" Wall



DOUBLE DOOR

12" HEIGHT, 12" DEPTH

| WIDTH | SKU | IN STOCK & SPECIAL ORDER | SPECIAL ORDER ONLY |
|-------|--------|--------------------------|--------------------|
| 30" | W3012B | ✓ | |
| 36" | W3612B | ✓ | |



- Standard close
- 6-way adjustable hinges
- Finished sides

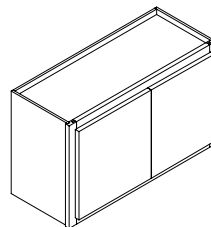
14" Wall



DOUBLE DOOR

14" HEIGHT, 12" DEPTH

| WIDTH | SKU | IN STOCK & SPECIAL ORDER | SPECIAL ORDER ONLY |
|-------|--------|--------------------------|--------------------|
| 30" | W3014B | | ✓ |
| 36" | W3614B | | ✓ |



- Standard close
- 6-way adjustable hinges
- Finished sides

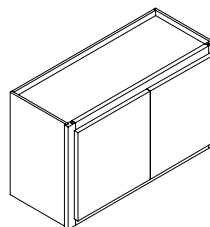
18" Wall



DOUBLE DOOR

18" HEIGHT, 12" DEPTH

| WIDTH | SKU | IN STOCK & SPECIAL ORDER | SPECIAL ORDER ONLY |
|-------|--------|--------------------------|--------------------|
| 30" | W3018B | ✓ | |
| 36" | W3618B | | ✓ |



- Standard close
- 6-way adjustable hinges
- Finished sides

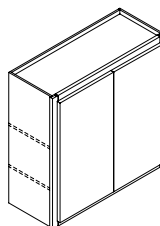
24" Wall



DOUBLE DOOR

24" HEIGHT, 12" DEPTH

| WIDTH | SKU | IN STOCK & SPECIAL ORDER | SPECIAL ORDER ONLY |
|-------|--------|--------------------------|--------------------|
| 30" | W3024B | | ✓ |



- 2 full-depth adjustable shelves
- Standard close
- 6-way adjustable hinges
- Finished sides

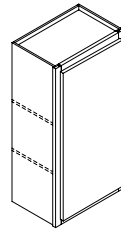
36" Wall



SINGLE DOOR

36" HEIGHT, 12" DEPTH

| WIDTH | SKU | IN STOCK & SPECIAL ORDER | SPECIAL ORDER ONLY |
|-------|--------|--------------------------|--------------------|
| 9" | W0936R | | ✓ |
| 12" | W1236R | | ✓ |
| 15" | W1536R | | ✓ |
| 18" | W1836R | | ✓ |
| 21" | W2136R | | ✓ |
| 24" | W2436R | | ✓ |



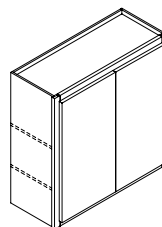
- 2 full-depth adjustable shelves
- Standard close
- 6-way adjustable hinges
- Finished sides



DOUBLE DOOR

36" HEIGHT, 12" DEPTH

| WIDTH | SKU | IN STOCK & SPECIAL ORDER | SPECIAL ORDER ONLY |
|-------|--------|--------------------------|--------------------|
| 27" | W2736B | | ✓ |
| 30" | W3036B | | ✓ |
| 36" | W3636B | | ✓ |



- 2 full-depth adjustable shelves
- Standard close
- 6-way adjustable hinges
- Finished sides

30" Diagonal Corner



DIAGONAL CORNER

30" HEIGHT, 12" DEPTH

| WIDTH | SKU | IN STOCK & SPECIAL ORDER | SPECIAL ORDER ONLY |
|-------|---------|--|--------------------|
| 24" | DC2430R | ✓ | |
| | | <ul style="list-style-type: none"> • 2 full-depth adjustable shelves • Standard close • 6-way adjustable hinges • Finished sides | |

36" Diagonal Corner



DIAGONAL CORNER

36" HEIGHT, 12" DEPTH

| WIDTH | SKU | IN STOCK & SPECIAL ORDER | SPECIAL ORDER ONLY |
|-------|---------|--|--------------------|
| 24" | DC2436R | | ✓ |
| | | <ul style="list-style-type: none"> • 2 full-depth adjustable shelves • Standard close • 6-way adjustable hinges • Finished sides | |

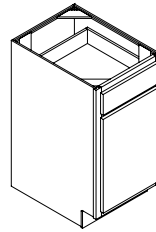
Single Door Base



SINGLE DOOR

35" HEIGHT, 23³/₄" DEPTH

| WIDTH | SKU | IN STOCK & SPECIAL ORDER | SPECIAL ORDER ONLY |
|-------|------|--------------------------|--------------------|
| 9" | B09R | | ✓ |
| 12" | B12R | ✓ | |
| 15" | B15R | ✓ | |
| 18" | B18R | ✓ | |
| 21" | B21R | | ✓ |
| 24" | B24R | ✓ | |



- 1 half-depth adjustable shelf
- Standard close
- 6-way adjustable hinges
- Finished sides
- Toekick sold separately

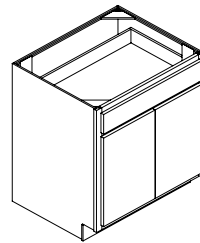
Double Door Base



DOUBLE DOOR

35" HEIGHT, 23³/₄" DEPTH

| WIDTH | SKU | IN STOCK & SPECIAL ORDER | SPECIAL ORDER ONLY |
|-------|------|--------------------------|--------------------|
| 27" | B27B | | ✓ |
| 30" | B30B | ✓ | |
| 36" | B36B | ✓ | |



- 1 half-depth adjustable shelf
- No center stile
- Standard close
- 6-way adjustable hinges
- Finished sides
- Toekick sold separately

Sink Base



SINK BASE

35" HEIGHT, 23³/₄" DEPTH

| WIDTH | SKU | IN STOCK & SPECIAL ORDER | SPECIAL ORDER ONLY |
|-------|-------|--------------------------|--------------------|
| 30" | SB30B | ✓ | |
| 36" | SB36B | ✓ | |

| | |
|--|---|
| | <ul style="list-style-type: none"> • No shelf • No center stile • Open back construction • Standard close • 6-way adjustable hinges • Finished sides • Toekick sold separately |
|--|---|

Wastebasket Base



WASTEBASKET

35" HEIGHT, 23³/₄" DEPTH

| WIDTH | SKU | IN STOCK & SPECIAL ORDER | SPECIAL ORDER ONLY |
|--|-------|--|--------------------|
| 18" | BWB18 | | ✓ |
|  | | <ul style="list-style-type: none"> • Includes two wastebaskets • Softclose door • Finished sides • Toekick sold separately | |

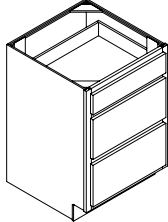
3 Drawer Base



DRAWER BASE

35" HEIGHT, 23³/₄" DEPTH

| WIDTH | SKU | IN STOCK & SPECIAL ORDER | SPECIAL ORDER ONLY |
|-------|------|--------------------------|--------------------|
| 18" | DB18 | ✓ | |
| 24" | DB24 | ✓ | |



- Standard close
- Finished sides
- Toekick sold separately

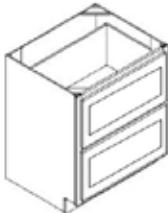
2 Drawer Base



DRAWER BASE

35" HEIGHT, 23³/₄" DEPTH

| WIDTH | SKU | IN STOCK & SPECIAL ORDER | SPECIAL ORDER ONLY |
|-------|--------|--------------------------|--------------------|
| 30" | DB30-2 | | ✓ |



- 2 full-depth adjustable shelves
- Standard close
- 6-way adjustable hinges
- Finished sides

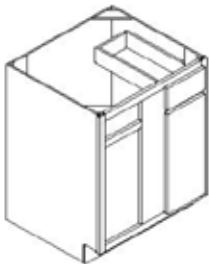
Blind Corner Base



BLIND CORNER BASE

35" HEIGHT, 23³/₄" DEPTH

| WIDTH | SKU | IN STOCK & SPECIAL ORDER | SPECIAL ORDER ONLY |
|-------|--------|--------------------------|--------------------|
| 36" | SCB36R | | ✓ |



- 1 half-depth adjustable shelf
- Standard close
- 6-way adjustable hinges
- Finished sides
- Toekick sold separately
- Door & drawer can be moved to left side of cabinet

Corner Susan



CORNER SUSAN

35" HEIGHT, 23³/₄" DEPTH

| WIDTH | SKU | IN STOCK & SPECIAL ORDER | SPECIAL ORDER ONLY |
|-------|-------|---|--------------------|
| 36" | SCR36 | ✓ | |
| | | <ul style="list-style-type: none"> • Includes 2 Lazy Susan spin shelves • Standard close • Toekick sold separately | |

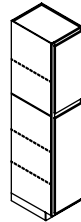
84" Tall Pantry



TALL PANTRY

84" HEIGHT, 23³/₄" DEPTH

| WIDTH | SKU | IN STOCK & SPECIAL ORDER | SPECIAL ORDER ONLY |
|-------|------|--------------------------|--------------------|
| 18" | U18R | ✓ | |
| 24" | U24R | | ✓ |



- 3 full-depth adjustable shelves
- Standard close
- 6-way adjustable hinges
- Finished sides
- Toekick sold separately

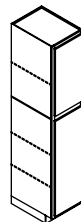
90" Tall Pantry



TALL PANTRY

90" HEIGHT, 23³/₄" DEPTH

| WIDTH | SKU | IN STOCK & SPECIAL ORDER | SPECIAL ORDER ONLY |
|-------|--------|--------------------------|--------------------|
| 18" | U1890R | | ✓ |



- 3 full-depth adjustable shelves
- Standard close
- 6-way adjustable hinges
- Finished sides
- Toekick sold separately

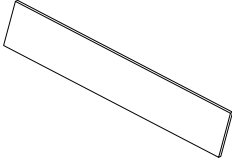
31" Filler



FILLER

31" HEIGHT, 3/4" DEPTH

| WIDTH | SKU | IN STOCK & SPECIAL ORDER | SPECIAL ORDER ONLY |
|-------|------|--------------------------|--------------------|
| 3" | F331 | ✓ | |
| 6" | F631 | | ✓ |



- For use with wall and base cabinets

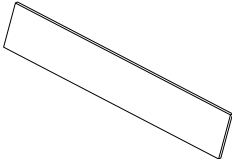
36" Filler



FILLER

36" HEIGHT, 3/4" DEPTH

| WIDTH | SKU | IN STOCK & SPECIAL ORDER | SPECIAL ORDER ONLY |
|-------|------|--------------------------|--------------------|
| 3" | F336 | | ✓ |
| 6" | F636 | | ✓ |



- For use with wall and base cabinets

80" Filler



FILLER

80" HEIGHT, 3/4" DEPTH

| WIDTH | SKU | IN STOCK & SPECIAL ORDER | SPECIAL ORDER ONLY |
|-------|------|--|--------------------|
| 3" | F380 | ✓ | |
| | | <ul style="list-style-type: none"> • For use with tall cabinets | |

86" Filler



FILLER

86" HEIGHT, 3/4" DEPTH

| WIDTH | SKU | IN STOCK & SPECIAL ORDER | SPECIAL ORDER ONLY |
|-------|------|--|--------------------|
| 3" | F386 | | ✓ |
| | | <ul style="list-style-type: none"> • For use with tall cabinets | |

Crown Moulding



| CROWN | | | |
|---------------|---------|--|--------------------|
| 1 3/4" HEIGHT | | | |
| WIDTH | SKU | IN STOCK & SPECIAL ORDER | SPECIAL ORDER ONLY |
| 96" | MCROWN8 | ✓ | |
| | | <ul style="list-style-type: none"> • For use with wall cabinets | |

Scribe Moulding



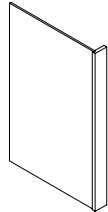
| SCRIBE | | | |
|------------------------|------|---|--------------------|
| 86" HEIGHT, 3/4" DEPTH | | | |
| WIDTH | SKU | IN STOCK & SPECIAL ORDER | SPECIAL ORDER ONLY |
| 96" | MSW8 | ✓ | |
| | | <ul style="list-style-type: none"> • For use with wall and base cabinets | |

Dishwasher Panel



DISHWASHER PANEL

35" HEIGHT, 23³/₄" DEPTH

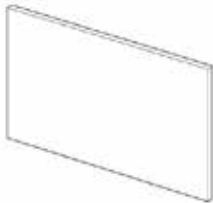
| WIDTH | SKU | IN STOCK & SPECIAL ORDER | SPECIAL ORDER ONLY |
|---|---------|--|--------------------|
| 3" | PEPR335 | ✓ | |
|  | | <ul style="list-style-type: none"> • For use adjacent to a dishwasher | |

Island Panel



ISLAND PANEL

36" HEIGHT, 1/4" DEPTH

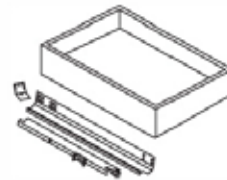
| WIDTH | SKU | IN STOCK & SPECIAL ORDER | SPECIAL ORDER ONLY |
|---|--------|---|--------------------|
| 48" | PA4836 | | ✓ |
|  | | <ul style="list-style-type: none"> • Cut to any length on project site | |

Roll Tray Kit



ROLL TRAY KIT

| WIDTH | SKU | IN STOCK & SPECIAL ORDER | SPECIAL ORDER ONLY |
|-------|------|--------------------------|--------------------|
| 18" | RT18 | | ✓ |
| 24" | RT24 | | ✓ |



- For use in B18, B24, U18, U24, or U1890
- To be installed on project site
- Kit includes 1 roll tray, guides, and installation hardware
- Cabinetry sold separately

Touch Up Kit



TOUCH UP KIT

| SKU | IN STOCK & SPECIAL ORDER | SPECIAL ORDER ONLY |
|-----|--------------------------|--------------------|
| TUK | | ✓ |

- For repairing minor scratches
- Touch up marker and wax stick



Easy to Clean

Care & Cleaning

For best results, use a damp, not wet, micro-fiber cloth with 5% mild soap, 95% water.

Dry thoroughly with a clean micro-fiber cloth.

Wipe up cooking splashes immediately.

Limited Lifetime Warranty

Lifetime Limited Warranty. Hampton Bay warrants to the original consumer purchaser, for as long as they own their homes, that Hampton Bay cabinetry, hinges, drawer glides, and drawer/door hardware ("Products") shall be free from defects in material and workmanship under normal use. This warranty is only applicable to Products used in residential applications within the United States or Canada and is not transferable to subsequent owners. Original Consumer Purchaser means the person who owns and occupies the home in which the Product is initially installed or purchases the dwelling from the builder/contractor/developer and is the first occupant of that dwelling.

What This Warranty Does Not Cover

The Limited Warranty does not apply to Product: (i) installed outdoors; (ii) used for purposes for which it is not designed or intended by Hampton Bay; (iii) which has been subjected to misuse, vandalism, abuse, negligence, or accident; (iv) which has been improperly stored (if Product must be stored, it should be covered and stored in a humidity/temperature controlled environment away from direct sunlight); (v) which has been improperly installed, cleaned, or maintained; (vi) which has been subjected to improper temperature and/or humidity extremes (temperature outside the range of 50-85° F, humidity outside the range of 30-55%); (vii) fire, flood, and acts of God; (viii) exhibiting normal wear and tear; and (ix) not purchased in, or installed in the United States or Canada.

In addition, natural woods may vary in color and characteristics and exhibit subtle changes as they age. For example, painted doors, drawer fronts, and face frames may eventually have visible cracking around the joint area, and cabinet colors may darken or lighten over time. Sunlight, smoke, and other environmental conditions may also affect the color and integrity of the Product finish or appearance over time. These variations are considered to be the nature of the material in relation to their environmental exposure and are not covered under this Limited Warranty. Certain household cleaners and other substances may also affect the color and integrity of the Product's finish or appearance over time. Avoid using abrasive cleaners, cleaners that contain chlorine, acidic cleaners, scuffing sponges, or steel wool, because they may scratch and affect the color or finish of the Products. Any such effects on the color and/or integrity of the finish or appearance over time are not covered by this Limited Warranty.

Warranty Holder's Sole and Exclusive Remedy Under This Limited Warranty

In the event of non-conformity in the workmanship or materials in one or more components of the Product, Hampton Bay's sole obligation is, as its sole option, to repair or replace any non-conforming component. This is the warranty holder's sole and exclusive remedy for the Product under the Limited Warranty. By way of example but not limitation, the following costs and expenses are not covered by this Limited Warranty: (i) labor costs for the removal, or reinstallation of the Product, or non-conforming part thereof; (ii) labor costs or material charges for the removal, reinstallation, refinishing of other items or building materials (such as but not limited to, counters, sinks, tiles, flooring, or plumbing fixtures) which must be removed, replaced, or reinstalled, or refinished in order to repair or replace the non-conforming Product. When a claim or warpage/joint separation/wood growth is submitted, Hampton Bay, at its sole option and after inspection, defer action for 12 months to allow the Product to acclimate to the installed environment.

The repair or replacement obligation under this Limited Warranty are contingent upon the current Product offerings of styles and construction options within the Hampton Bay Product line at the time of the warranty claim. If a warranty claim is filed for an obsolete Product and Hampton Bay elects to repair or replace the non-conforming obsolete Product, Hampton Bay reserves the right, as its sole option, to honor its repair or replacement obligations under the Limited Warranty by either: 1) replacing the affected component with a newer component of the same style and approximate color; or 2) replacing the affected component and any other component(s) to achieve a uniform appearance with a similar and comparable product style or approximate color of the originally purchased style. If the components are replaced or repaired, Hampton Bay cannot guarantee that the finish and appearance of Product installed at the premises. This is due to the changes that occur during the cabinetry woods' natural aging process, affecting its color and grain.

Disclaimer of Warranties

The foregoing limited warranty is in lieu of and excludes all other warranties not expressly set forth herein, whether express or implied, by operation of law or otherwise, including but not limited to any implied warranties of merchantability or fitness for a particular purpose. To the extent that any implied warranties may nonetheless exist by operation of law. Some states, provinces, or territories do not allow limitations on how long an implied warranty lasts. So the above limitations may not apply to you. Some states, provinces, or territories do not allow the exclusion or limitation of incidental or consequential damages. So the above limitations or exclusions may not apply to you. This limited warranty gives you specific legal rights and you may also have other rights which vary from state to state, province to province, or territory to territory. Even if this limited warranty is deemed to have failed of its essential purpose, in no event will Hampton Bay's entire liability exceed the purchase price of the product warranted hereunder, or the non-conforming portion thereof, whichever is the lesser amount.

Warranty Claims

To obtain benefits under this Limited Warranty, contact your authorized Hampton Bay dealer or distributor who will arrange for inspection of the Product. A dated sales receipt as proof of purchase is required to obtain benefits from this Limited Warranty. If you have difficulty obtaining assistance, please write to:

Hampton Bay Customer Service
P.O. Box 420
Jasper, IN 47547-0420
1-800-317-0510
Hamptonbayinstock@masterbrand.com



Customer Service

PHONE

1-800-317-0510

EMAIL

hamptonbayinstock@masterbrand.com

HOURS

Monday - Friday 8:00 AM to 6:00 PM EST

Saturday 9:00 AM to 1:00 PM EST