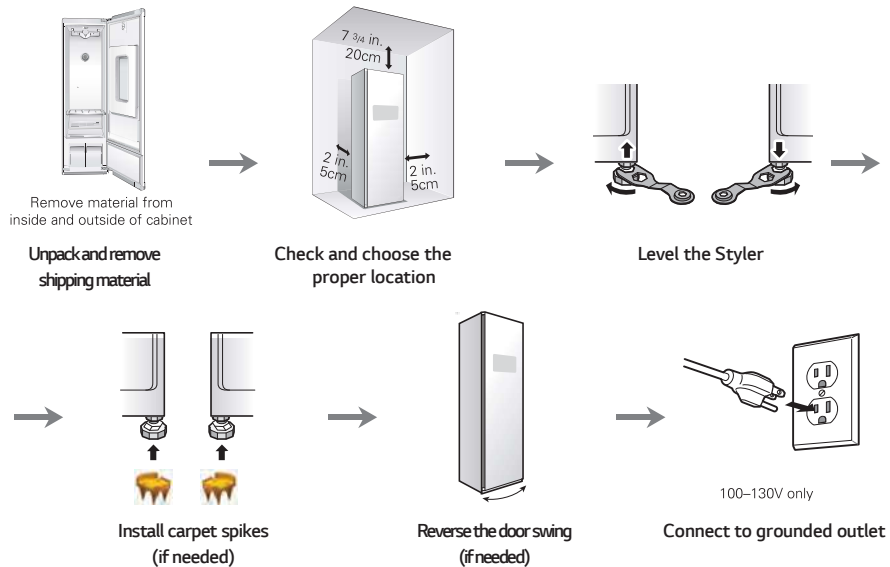


INSTALLATION

INSTALLATION OVERVIEW

Please read the following installation instructions first after purchasing this product or transporting it to another location.



PRODUCT SPECIFICATIONS

The appearance and specifications listed in this manual may vary due to constant product improvements.

steam clothing care	S3*F**
description	electric machine for maintaining clothing
electrical requirements	please refer to the rating label regarding detailed information
dimensions	17 1/2 in. (W) X 23 in. (D) X 72 13/16 in. (H), 39 3/4 in. (D with door open) 445 mm (W) X 585 mm (D) X 1850 mm (H), 1010 mm (D with door open)
net weight	183 lb (83 kg)
maximum capacity	4 items
power consumption	1500 W
safety device	double overheating safety device, thermal fuse, programming

INSTALLATION LOCATION REQUIREMENTS

⚠ WARNING Read all installation instructions completely before installing and operating the Styler. It is important to review this entire manual before installing and using the Styler.

The installation requires:

- A grounded electrical outlet located within 2 ft. (61 cm) of either side of the appliance.
- A sturdy floor to support the total appliance weight of 183 lbs (83 kg). The combined weight of any other laundry appliances should also be considered.

⚠ WARNING

- **Do not install or store the Styler in an area where it will be exposed to water and/or weather.** Failure to follow this warning could result in risk of electric shock, injury, or product damage or malfunction.

Clearances

⚠ CAUTION

- **The floor must be level, with a maximum slope of 1 inch (2.5 cm) under the Styler.** If the slope is greater than 1 inch (2.5 cm), the appliance cannot be leveled properly.
- **Do not install the Styler on a hollow or flexible platform.** Doing so may cause excessive noise and vibration and result in damage or injury if the product tips over.

