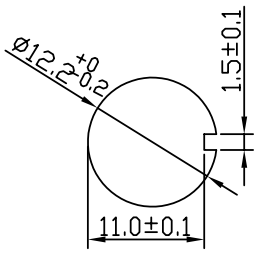
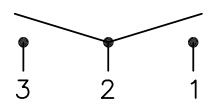
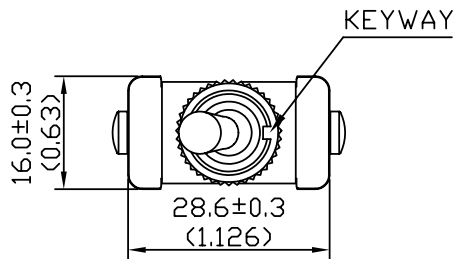


Rating	20A 125V, 10A 277V AC 3/4HP 125-250 VAC	Mount Hole		Circuit Structure	
Contact R	50m ohm Max.				
Insulation R	DC 500V 100M ohm Min.				
Dielectric Strength	AC 1500V 1 minute				
Circuit	3P SPDT ON-OFF-ON				
Operation Force	OFF-ON: 700g±200g ON-OFF: 450g±150g				



1 KNURL NUT ASSY
1 HEX NUT ASSY
Packing: As GB's standard pack
(1 pce/blister card, 5 pcs
/box stick with one label)

