

USE AND CARE GUIDE


10'x10' Curved Roof Pergola



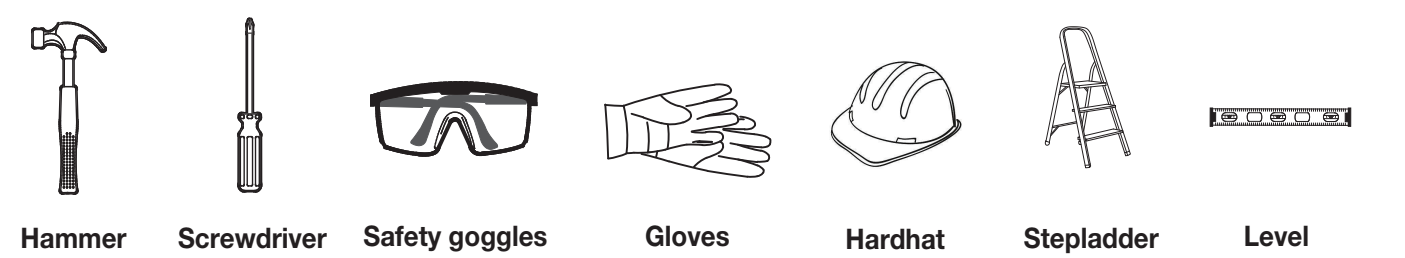
Pre-installation

PLANNING INSTALLATION

To prevent damage, place all parts on a soft surface during assembly.
Tools required for assembly (not included): Allen wrench (included), hammer, screwdriver, stepladder, level and other safety items such as gloves, safety goggles and hardhat.

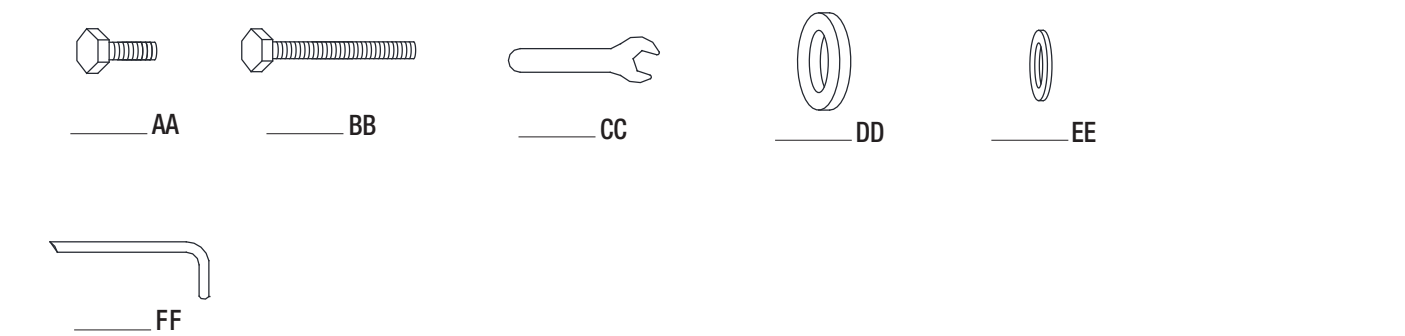
 **NOTE:** Tools and protective articles below are not provided.

TOOLS REQUIRED



HARDWARE INCLUDED

 **NOTE:** Hardware not shown to actual size.



Part	Description	Quantity
AA	Bolt (M 6*15)	49
BB	Bolt (M 6*95)	26
CC	Wrench	2
DD	Plastic Washer	42
EE	Washer	33
FF	Stake	16

Pre-installation (continued)

PACKAGE CONTENTS



_____ A1



_____ A2



_____ B1



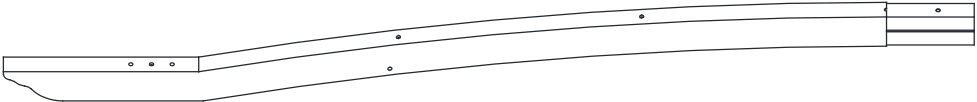
_____ B2



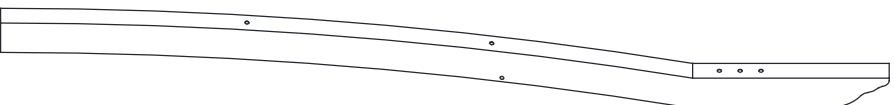
_____ C1



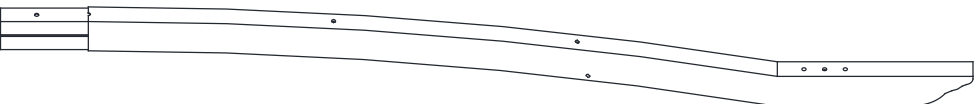
_____ C2



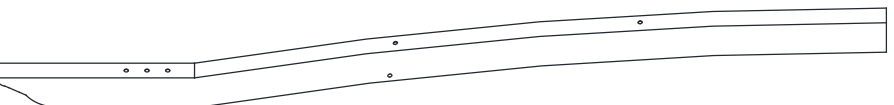
_____ D1



_____ D2



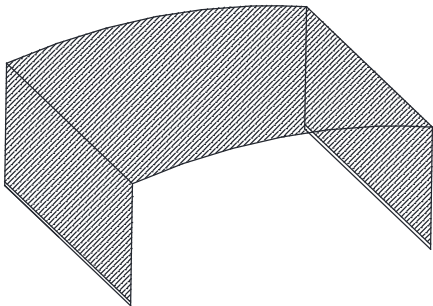
_____ E1



_____ E2

Pre-installation (continued)

PACKAGE CONTENTS



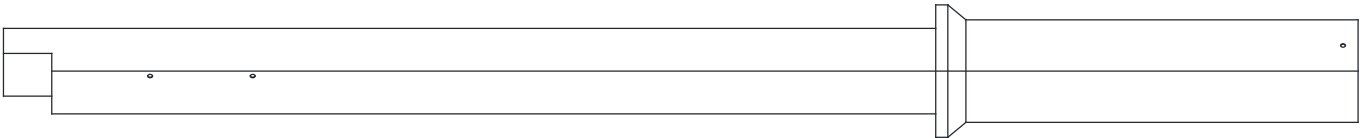
____ F



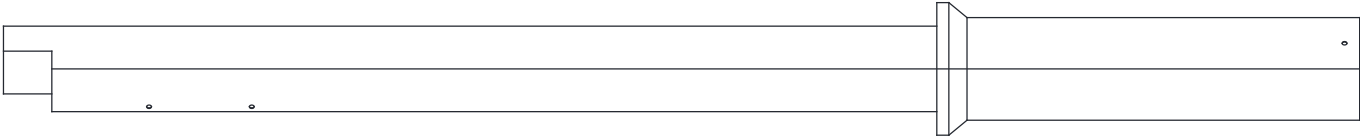
____ G1



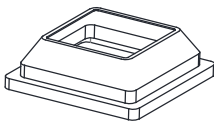
____ G2



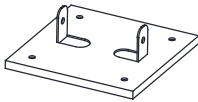
____ H



____ I



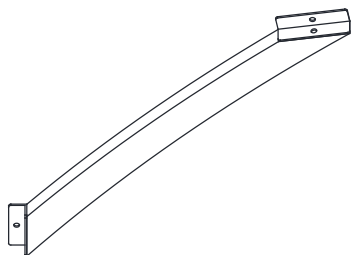
____ J



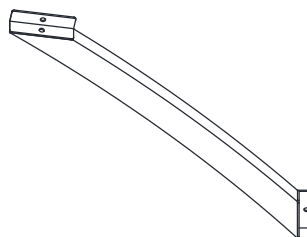
____ K

Pre-installation (continued)

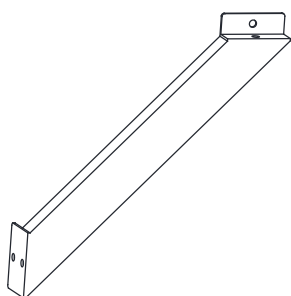
PACKAGE CONTENTS



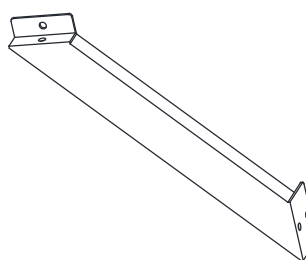
____ L1



____ L2



____ N



____ M

Pre-installation (continued)

PACKAGE CONTENTS

Part	Description	Quantity
A1	Left Rafter,Female	1
A2	Left Rafter,Male	1
B1	Center Rafter,Female	5
B2	Center Rafter,Male	5
C1	Right Rafter,Female	1
C2	Right Rafter,Male	1
D1	Rear Beam,Male	1
D2	Rear Beam,Female	1
E1	Front Beam,Male	1
E2	Front Beam,Female	1
F	Canopy	1
G1	Rod,Male	2
G2	Rod,Female	2
H	Post 1	2
I	Post 2	2
J	Post Skirt	4
K	Plate	4
L1	Brace 1	2
L2	Brace 2	2
M	Brace 3	2
N	Brace 4	2