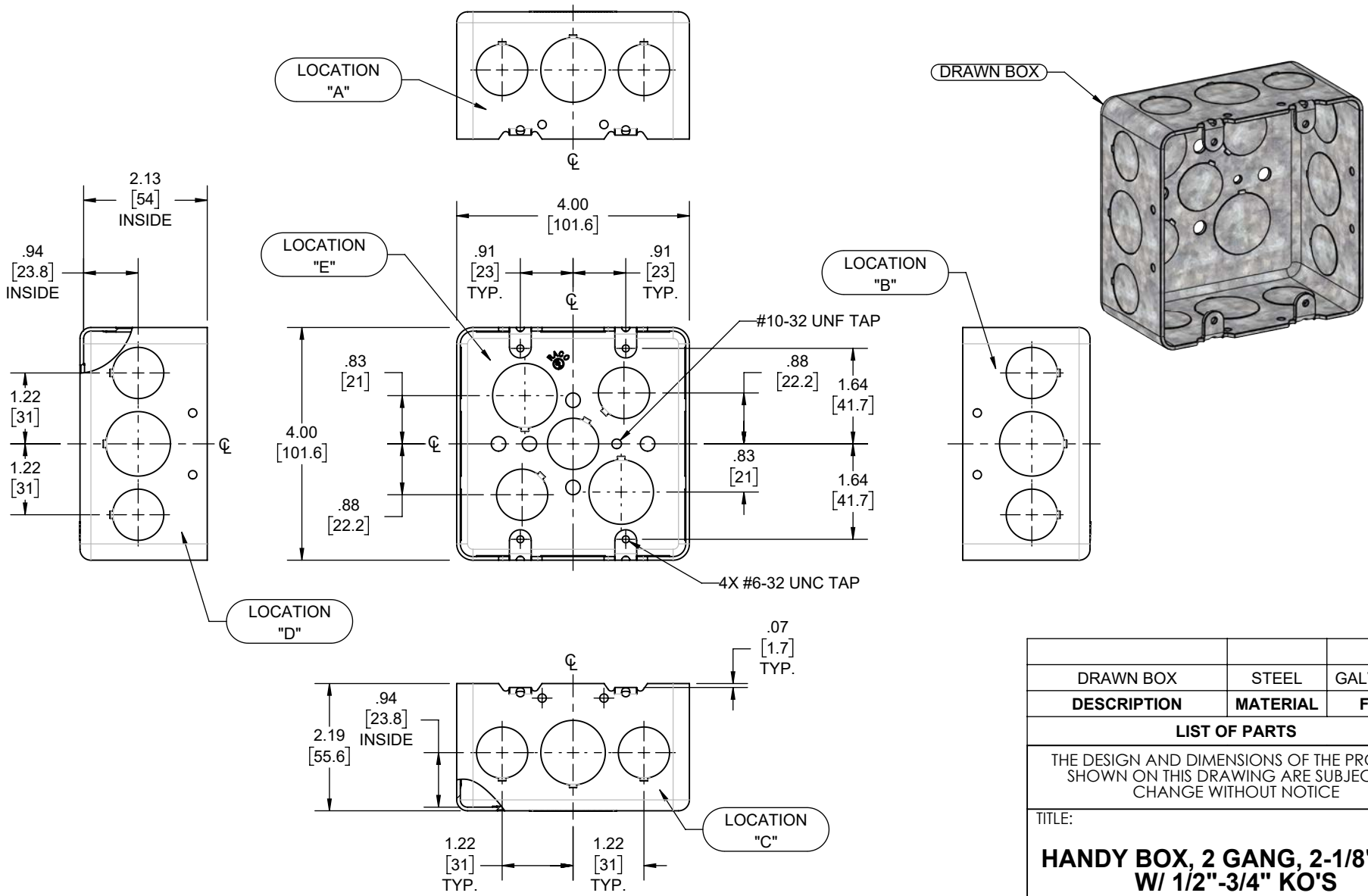


| REVISIONS | | | |
|-----------|----------|-----------------|-----|
| REV. | DATE | DESCRIPTION | BY |
| - | 02-14-22 | INITIAL RELEASE | RMV |



- NOTES:
1. ALL DIMENSIONS ARE IN INCHES AND [MILLIMETERS]
 2. BOX VOLUME: 30.3 IN³ [496.5 CM³]
 3. UL LISTED

| KNOCKOUTS | | |
|------------|------------|------|
| TRADE SIZE | LOCATION | QTY. |
| 1/2" KO | E | 3 |
| 3/4" KO | E | 2 |
| 1/2" KO | A, B, C, D | 2 |
| 3/4" KO | A, B, C, D | 1 |

| DRAWN BOX | STEEL | GALVANIZED |
|-------------|----------|------------|
| DESCRIPTION | MATERIAL | FINISH |

LIST OF PARTS

THE DESIGN AND DIMENSIONS OF THE PRODUCT SHOWN ON THIS DRAWING ARE SUBJECT TO CHANGE WITHOUT NOTICE

TITLE:
**HANDY BOX, 2 GANG, 2-1/8" DP.,
W/ 1/2"-3/4" KO'S**

| | | | |
|--------------------------------------|---------------------|---------------|--------------|
| TOLERANCE UNLESS OTHERWISE SPECIFIED | | | SCALE: 1:2.5 |
| .XX DECIMAL ± .015 | .XXX DECIMAL ± .005 | | |
| DATE: 02-14-22 | APP. BY: N.S. | DRAWN BY: RMV | SIZE: A |