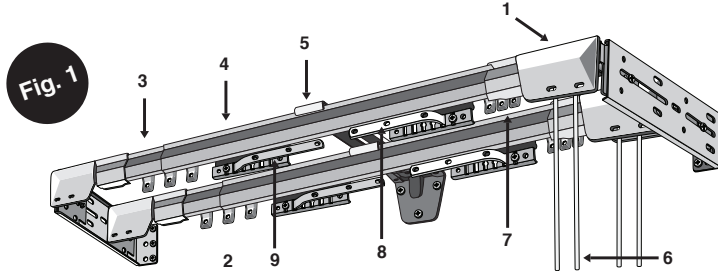


INSTALLATION INSTRUCTIONS FOR CENTER OPEN DOUBLE TRAVERSE ROD (Drop In)

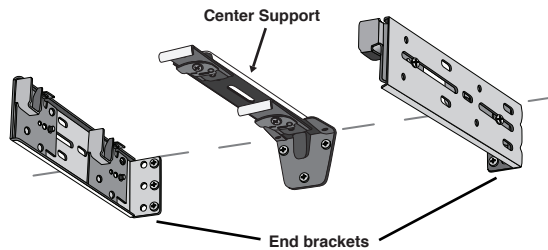
PARTS LIST

1. Pulley Housing
2. Bracket
3. Inside Section of Rod
4. Outside Section of Rod
5. Center Support
6. Cord
7. Slide
8. Overlap Master
9. Under Master (center open only)

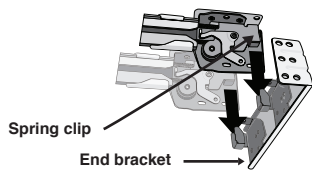


1 MOUNTING INSTRUCTIONS :
 Wall mount option- Mount the two end brackets to the wall at desired location. No center support is needed for installations less than 50" long. Ceiling mount option- If rod is to be installed to the ceiling, attach pulley housing (without brackets) and stirrup portion of center support directly to the ceiling.
NOTE: IF USING AS A ONE WAY DRAW, INSTALL ONE SUPPORT BRACKET ON OPEN END OF ROD.

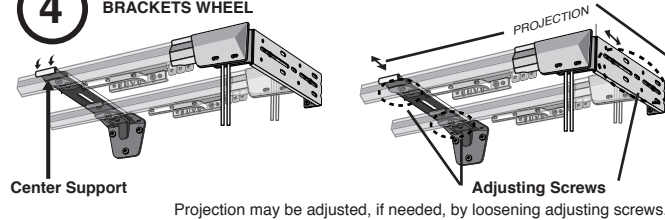
2 FOR RODS FULLY EXTENDED TO 50" OR MORE, INSTALL CENTER SUPPORT.



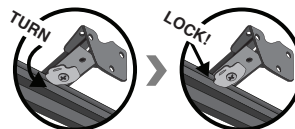
3 INSTALL ROD INTO END BRACKETS : drop end of rod into the u-shaped clip of the end bracket. To remove rod from bracket simply lift the rod out of the u-shaped clip. Attach Rod into center support by turning silver color bracket wheel.



4 ATTACH ROD INTO CENTER SUPPORT BY TURNING SILVER COLOR BRACKETS WHEEL.

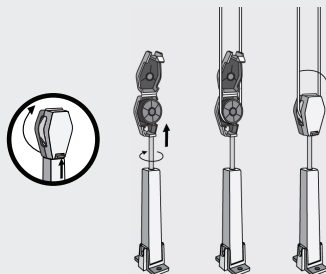


ATTACH SUPPORT TO THE ROD
 The support arm goes over the top of the rod with the silver cam lock toward the floor. The rod fits into the arm hook and locks in by turning the cam lock with a flat bladed screwdriver. Do not turn the Philips screw.

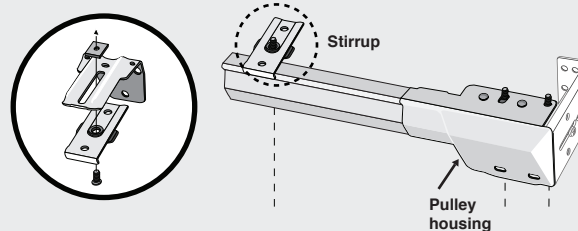


SPECIAL INSTRUCTION

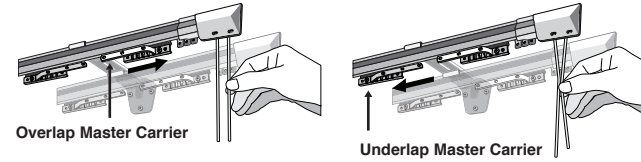
1. TENSION PULLEY OPTION : can be mounted to the wall or floor. After securing Tension Pulley to desired location, loop cord onto pulley wheel. Grasp cord joining knot behind Master Carrier and pull out enough cord to take up slack between the rod and the cord tension pulley. (Fig. 2) Retie knot as close to the Master Carrier as possible then cut off excess cord beyond knot. Rotate pulley head until cords are in proper alignment and release into pulley base.



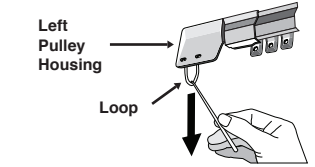
2. CEILING INSTALLATION. If rod is to be installed to ceiling, attach pulley housings (without brackets) and stirrup portion of center support directly to ceiling.



5 TO MAKE SURE DRAPERIES CENTER CORRECTLY, pull draw cord as far right as it will go to move the Overlap Master Carrier to the end of the rod. Then holding both cords securely, push Underlap Master Carrier as far to the left as it will go. Lock the cord by looping it under the locking tabs at the back of the Underlap carrier.

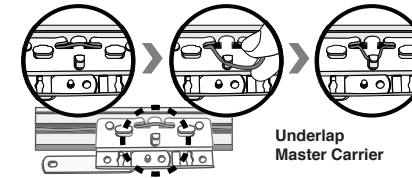


Rods are pre-strung with cord loop on the right. They may be converted to cord loop on the left by simply hooking the cord and pulling it out from inside the left pulley housing and pulling the loop all the way out.



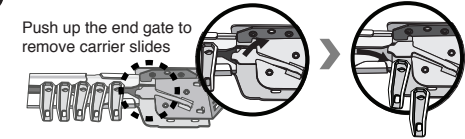
6 LOCK CORD by looping it under locking tongues at back of Underlap Master Carrier. (Center Open only)

If Cord-Tension Pulley is to be installed, see "SPECIAL INSTRUCTION" No. 1 and skip Step 7. (Supplied on 84"-156" length only)

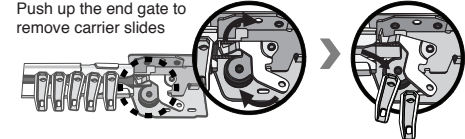


7 REMOVAL OF UNUSED CARRIER SLIDES - PUSH UP THE END GATE TO REMOVE CARRIER SLIDES.

Push up the end gate to remove carrier slides

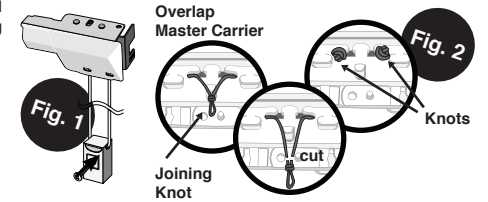


Push up the end gate to remove carrier slides

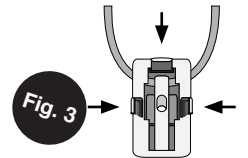
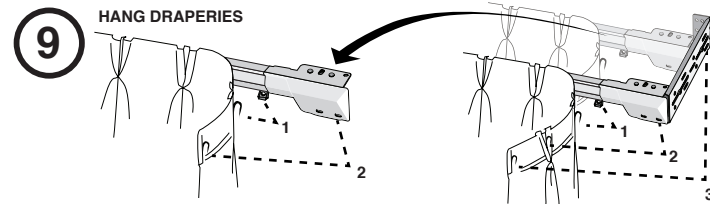


8 CHILD SAFETY CORD GUIDE: RODS WILL NOT WORK PROPERLY WITHOUT GUIDE INSTALLED Guide is pre-attached to the cord. Mount the guide to the wall at the desired height using the included screw. Tighten the screw until the cord slides through the device freely. (See Fig. 1) Remove excess slack on the cord by grasping and pulling down on the knot that is on the back side of the master carrier. Pull the knot out until the cord is taught in the guide. Tie a new knot into the cord as close as possible to the master carrier and cut off the excess cord. (See Fig. 2)

CHILD SAFETY CORD GUIDE REMOVAL: Pry open the three clips on the back of the device. (See Fig.3) Split the guide open and remove the cord guide.



9 HANG DRAPERIES



WARNING
 TO AVOID POSSIBLE STRANGULATION, KEEP CORDS OUT OF REACH OF CHILDREN. USE THESE DEVICES:

