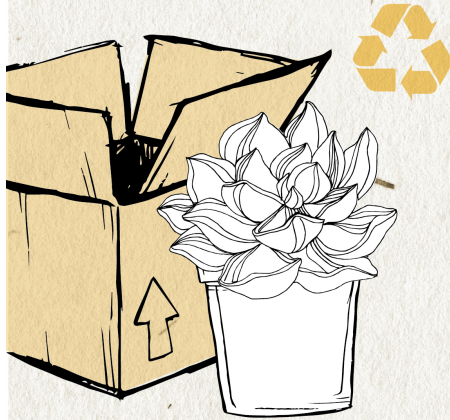


Caring for Your Succulent

1 How exciting, you have just received your plant! Remove all the packaging (don't forget to recycle!)

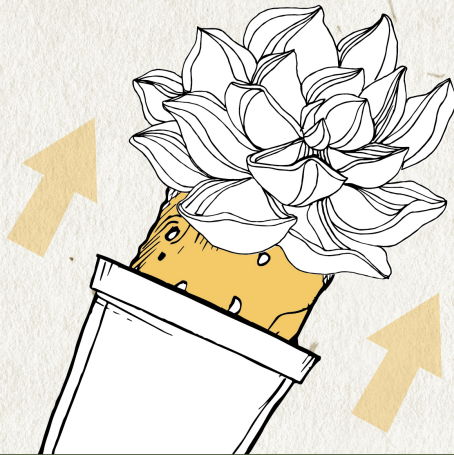


2 Dust off any soil with a soft brush like a paintbrush.



3 Place by a sunny windowsill or on an outdoor patio. Use the following directions for repotting.

4 Remove gently from grow pot, loosening the roots a bit so they can breathe.



5 Use a well draining soil mix. Tuck the plant into its new pot, (making sure the pot has good drainage holes).



6 Pat the soil down firmly. Soil should only come up far enough to cover the root ball.



7 Generously soak the soil if it is dry. Plan on watering at least once every two weeks depending on season and conditions.



Watch it thrive!



**SMART
PLANET**
Sustainable Gardening