

New Master

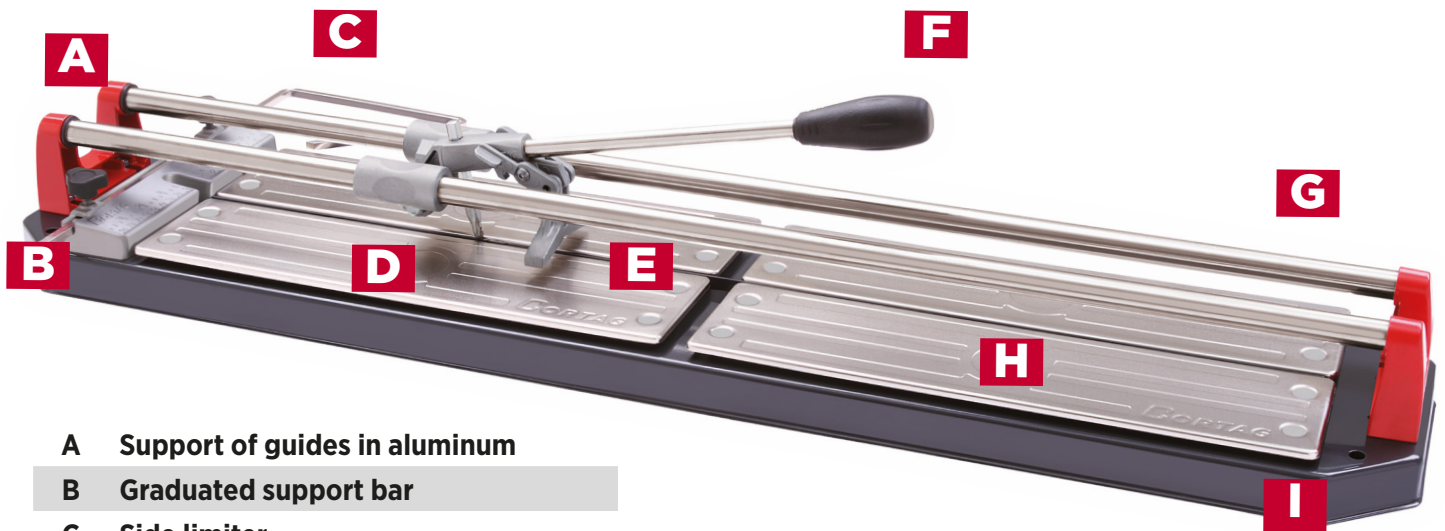
CERAMIC TILE CUTTER



Professional cutters NEW MASTER are indicated to cut ceramic and porcelain tiles up to 1/2".

- Absolute precision in straight and miter cuts.
- Scoring and separation system made of die casting aluminum.
- Guides in chromed carbon steel.
- Scoring wheel in tungsten carbide
- Durability and strength in all components of the equipment.

CORTAG
REVOLUTION TOOLS



A Support of guides in aluminum

B Graduated support bar

C Side limiter

D Scoring wheel

E Separation system in aluminum

F Lever

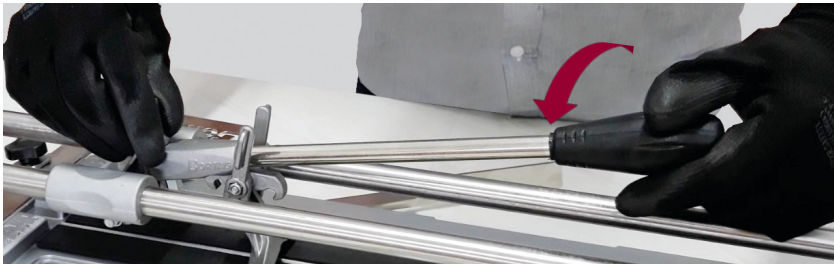
G Guides in nickel plated steel

H Tray in nickel plated steel

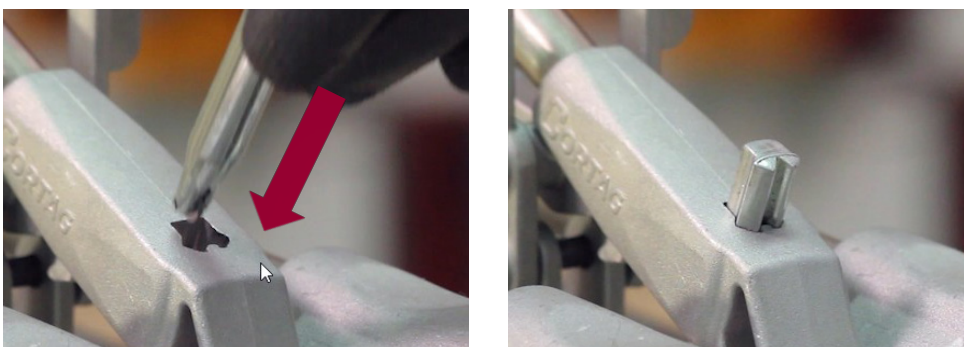
I Carbon steel base

Inserting / Changing the Scoring Wheel

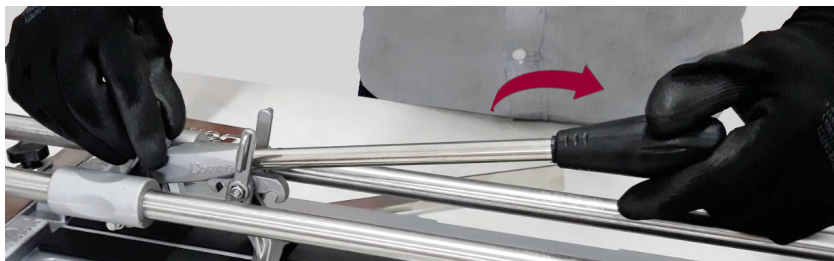
1 - Twist the handle counter-clockwise to loosen the Scoring Wheel;



2 - Take the old Scoring Wheel out of the toolholder and replace it for a new one;



3 - Twist the handle clockwise to tighten the new Scoring Wheel.





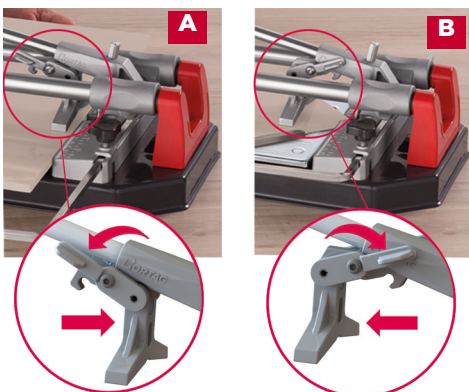
Longitudinal cut

- Correctly position the tile in graduate backrest bar;
- Set the desired cutting width by using the lateral support bracket;
- Score the tile (in enameled side) pushing the lever with a constant pressure towards the tile, according to the hardness of the coating;
- This scoring shall be done only once, uniform and throughout the complete length of the tile.



Diagonal cutting

- Place one corner of the tile to be cut in the center of the support bar;
- With the scoring wheel, adjust the positioning of the other opposite corner of the piece;
- Use the lateral support bracket to support the tile;
- Score the tile (in enameled side) pushing the lever with a constant pressure towards the tile, according to the hardness of the coating;
- This scoring shall be done only once, uniform and throughout the complete length of the tile.



Separating the parts

Longitudinal cut:

- To separate narrow strip cuts, rotate the articulator, positioning the spacer forward, until locking the shaft (FIG. A);
- Press the lever down to separate.

IMPORTANT: Position the breaker as close as possible to the base of the cutter.

Diagonal cut:

- To separate cuts at 45° angles, rotate the articulator, positioning the spacer back, until locking the shaft (FIG.B);
- Press the lever down to separate.

IMPORTANT: Position the breaker as close as possible to the base of the cutter, considering that the whole length of the breaker must contact the tile.



Maintenance and Cleaning

- Clean the guides with a clean cloth and then lubricate with a few drops of oil;
- Lubricate the scoring wheel periodically with oil;
- When excessive cut material is observed in the scoring wheel, wash it with kerosene before lubricating;
- Imperfections in cutting or difficulty on separating of piece can be solved with the replacement of the CORTAG original scoring wheel.