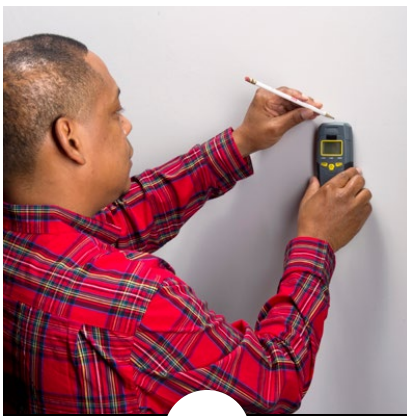




Install Shelving Brackets into a Wall Stud

Tools and Materials

Waddell Brackets, Stud Finder, Pencil, Level, Tape Measure, Drill and Bits, Wood Screws, Screwdriver



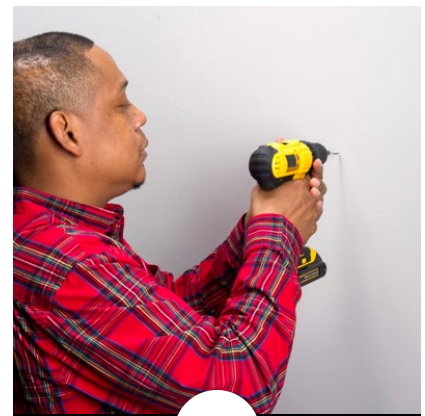
1

Plan shelf placement. Locate and mark wall studs using a pencil.



2

Use a level and tape measure to mark bracket locations.



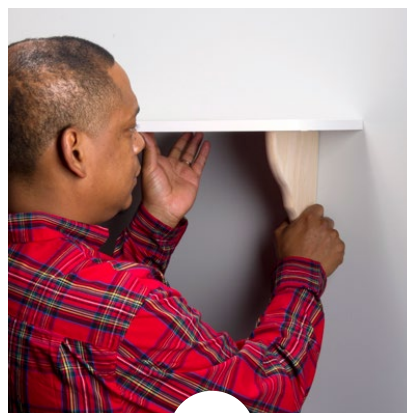
3

Pre-drill holes and insert screws with drill or screwdriver.



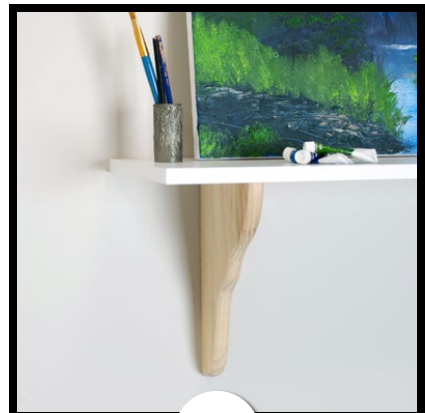
4

Secure Waddell brackets.



5

Place shelving.



6

Enjoy!

Waddell accepts no liability whatsoever for the safety, reliability, durability, and performance of any of our companies' products when used in a manner exceeding the maximum load guidelines or for the use/misuse of the tools used during installation.