

LG WashTower™ Pre-Delivery Cheat Sheet

STEP 1 | Watch the Measure First Video

The video explains how to **Walk the Path** to ensure the unit will fit through doorways and can be properly moved into the designated space. It also covers how to determine fuel type and required accessories.



STEP 2 | Confirm the Customer's Fuel Type

Gas Requirements



Electric Requirements



IMPORTANT! For Electric Dryers, customers need to know whether they have a 3-prong or a 4-prong outlet to purchase the correct cord. Most electric power cords are 4-6 ft long. Be sure to purchase a cord long enough to reach from the top of the dryer to the outlet.

STEP 3 | Confirm All Required Accessories Have Been Purchased

Click your Model type to view required accessories and the Customer Checklist.

Gas Models

With Steam Dryer

WKGX201HBA
WKGX201HWA
WSGX201HNA

Without Steam Dryer

WKG101HVA
WKG101HWA

Electric Models

With Steam Dryer

WKEX200HBA
WKEX200HWA
WSEX200HNA

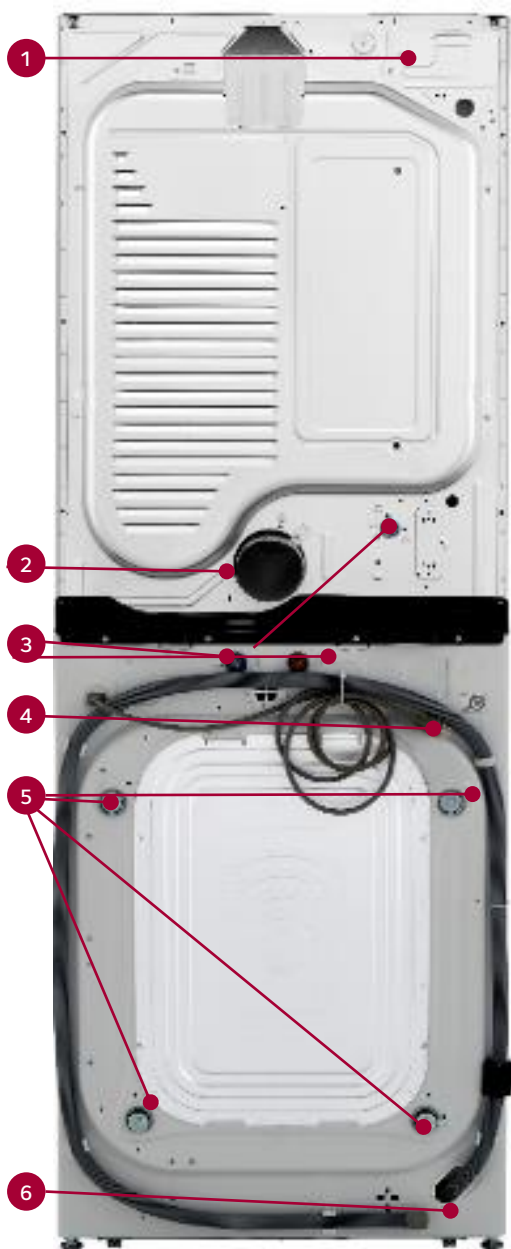
Without Steam Dryer

WKE100HVA
WKE100HWA

LG WashTower™ Customer Checklist

Models without Steam Dryer

- WKE100HVA
- WKE100HWA



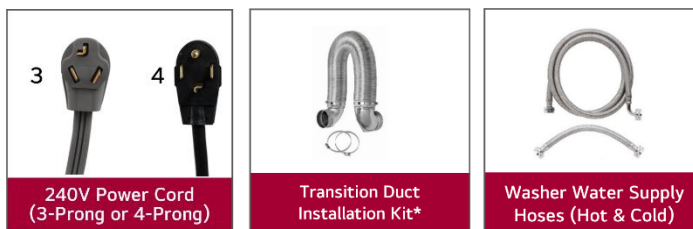
1 | Measure First & Confirm Fuel Type

- ☐ Watch Measure First Video
- ☐ Confirm 120V, 15-Amp Outlet (For Washer)
- ☐ Confirm 240V, 30-Amp Outlet (For Dryer)
- ☐ Locate the Water Line and Shut Off Valve



2 | Purchase Required Accessories

IMPORTANT! These accessories are sold separately and are required for proper installation.



3 | Follow Delivery Day Install Steps

- 1 Install 1 Power Cord in Block Access Panel
Check if 3 or 4 for 240V, 30A Outlet
- 2 Install Ducting to Dryer Exhaust Vent Outlet
- 3 Install 2 Hoses for Hot and Cold Water Inlets
- 4 Remove 4 Shipping Bolts Prior to Installation
- 5 Plug 1 power cord for both Washer & Dryer into 120V, 15-Amp Outlet*
- 6 Install Drain Hose
- 7 Activate **Proactive Customer Care**
Download the LG ThinQ® App to activate Proactive Customer Care.