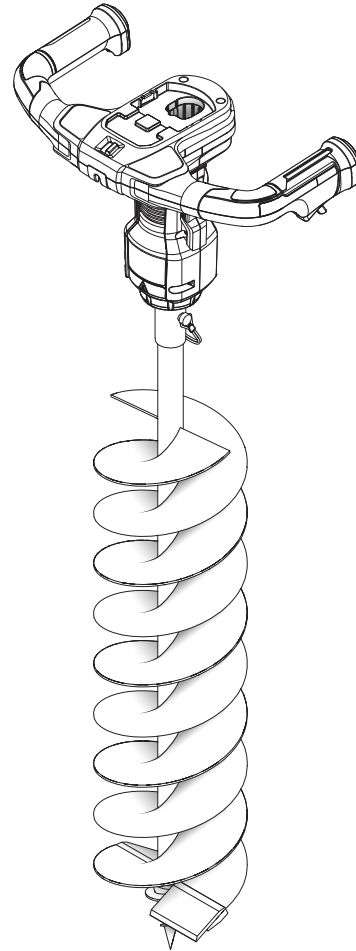


# REPAIR SHEET

BRAND <b>RYOBI</b>		DESCRIPTION <b>18 Volt Brushless Hole Auger</b>
MODEL NO. <b>P2903VNM</b>	MFG. NO. <b>108629001</b>	

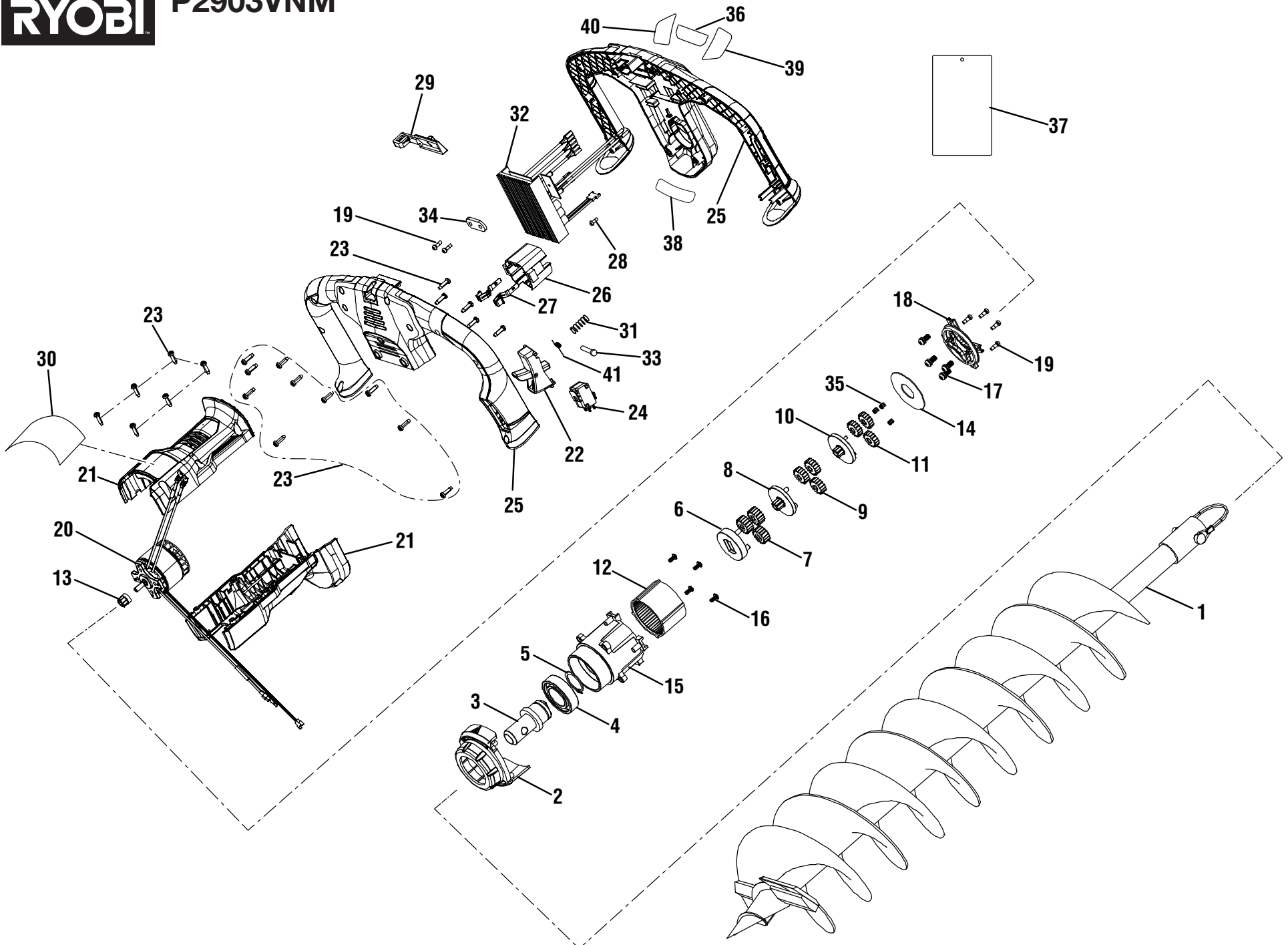


## TECHTRONIC INDUSTRIES POWER EQUIPMENT

P.O. Box 1288, Anderson, SC 29622 ■ 1-800-525-2579 ■ [www.ryobitools.com](http://www.ryobitools.com)

12-1-20 (Rev:01)

*The model number and manufacturing location will be found on a label attached to the product. Always mention this information in all communications regarding this product and when ordering parts.*



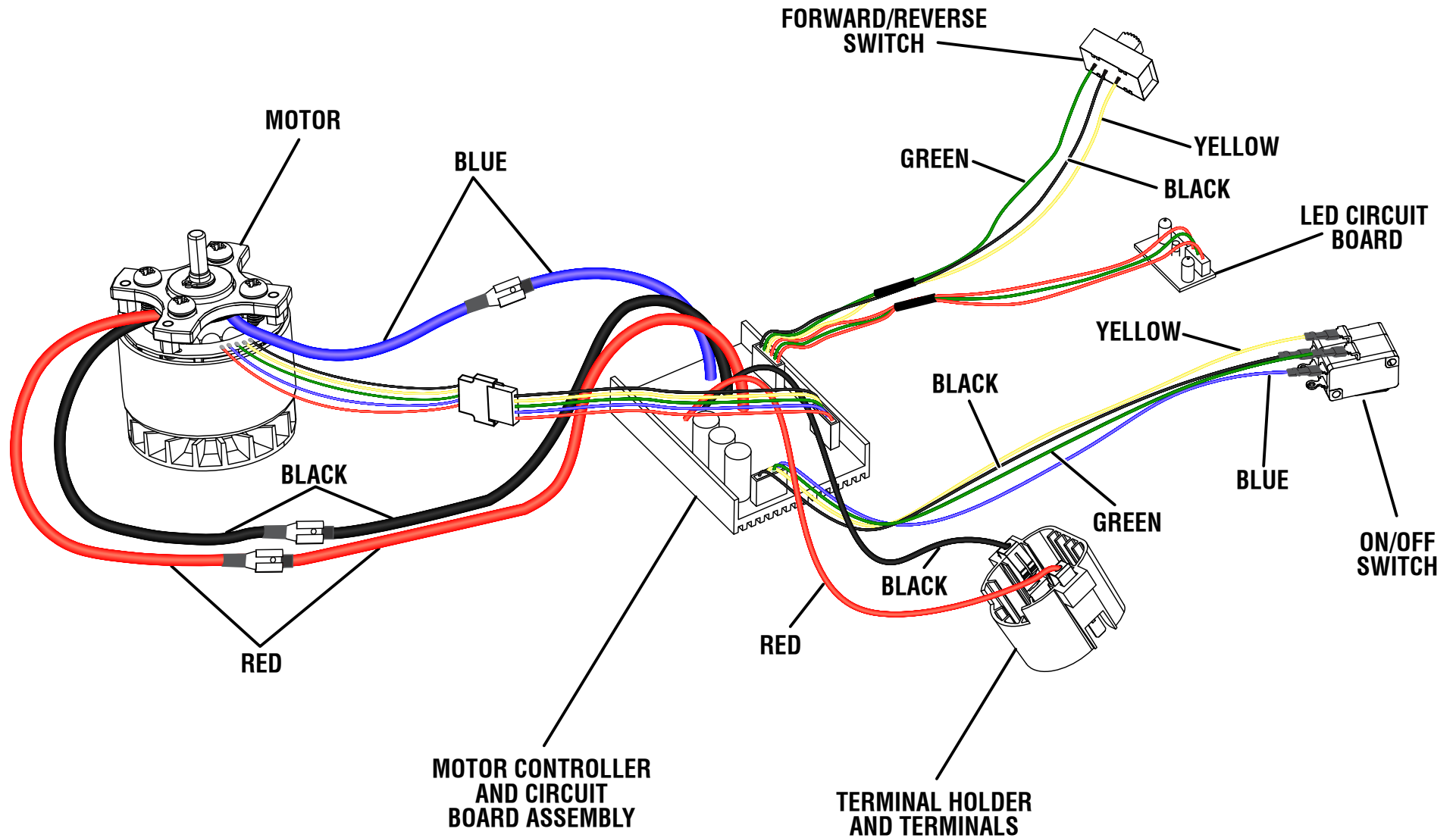


P2903VNM

PARTS LIST

KEY NO.	PART NO.	DESCRIPTION	QTY.
1	682246003	Auger	1
2	643261001	Gear Box	1
3	622255001	Output Shaft	1
4	682014001	Ball Bearing	1
5	696647001	Retaining Ring	1
6	613614001	Output Gear	1
7	613611001	Planet Gear	3
8	613613001	Sun Gear	1
9	613610001	Planet Gear	3
10	613612001	Sun Gear	1
11	613609001	Planet Gear	3
12	613615001	Ring Gear	1
13	613616001	Motor Pinion	1
14	639785001	Washer	1
15	534561001	Gear Box	1
16	662472001	Screw (M3 x 5 mm)	4
17	660502003	Screw (M5 x 8 mm)	4
18	643258001	Gearbox Base	1
19	660031023	Screw (M3.5 x 10 mm, T10 Torx Pan Hd.)	6
20	742393003	Motor	1
21	317389001	Motor Housing Assembly (Inc. Key No. 30)	1
22	317388001	Trigger Assembly	1

KEY NO.	PART NO.	DESCRIPTION	QTY.
23	661817001	Screw (M4 x 14 mm)	21
24	760611001	Trigger Power Switch	1
25	317387001	Cover Assembly (Inc. Key Nos. 36 & 38-40)	1
26	532132002	Terminal Holder	1
27	637807001	Terminal	2
28	660203052	Screw (M3 x 27 mm, Pan Hd.)	1
29	534194002	Forward/Reverse Button	1
30	941588687	Warning Icon Label	1
31	679002002	Spring	1
32	280687003	Motor Control and Circuit Board Assembly	1
33	673946001	Spring Pin	1
34	639125001	Height Adjustment Press Plate	1
35	680658014	Needle Bearing	3
36	941588688	Data Label	1
37	918013096	Instructional Tag	1
38	941760001	Small Logo Label	1
39	941588689	LED Left Indicator Label	1
40	941588690	LED Right Label	1
41	697586001	Lock-out Button Spring	1
	<b>Not Shown:</b>		
	998000200	Operator's Manual	



**WIRING DIAGRAM**