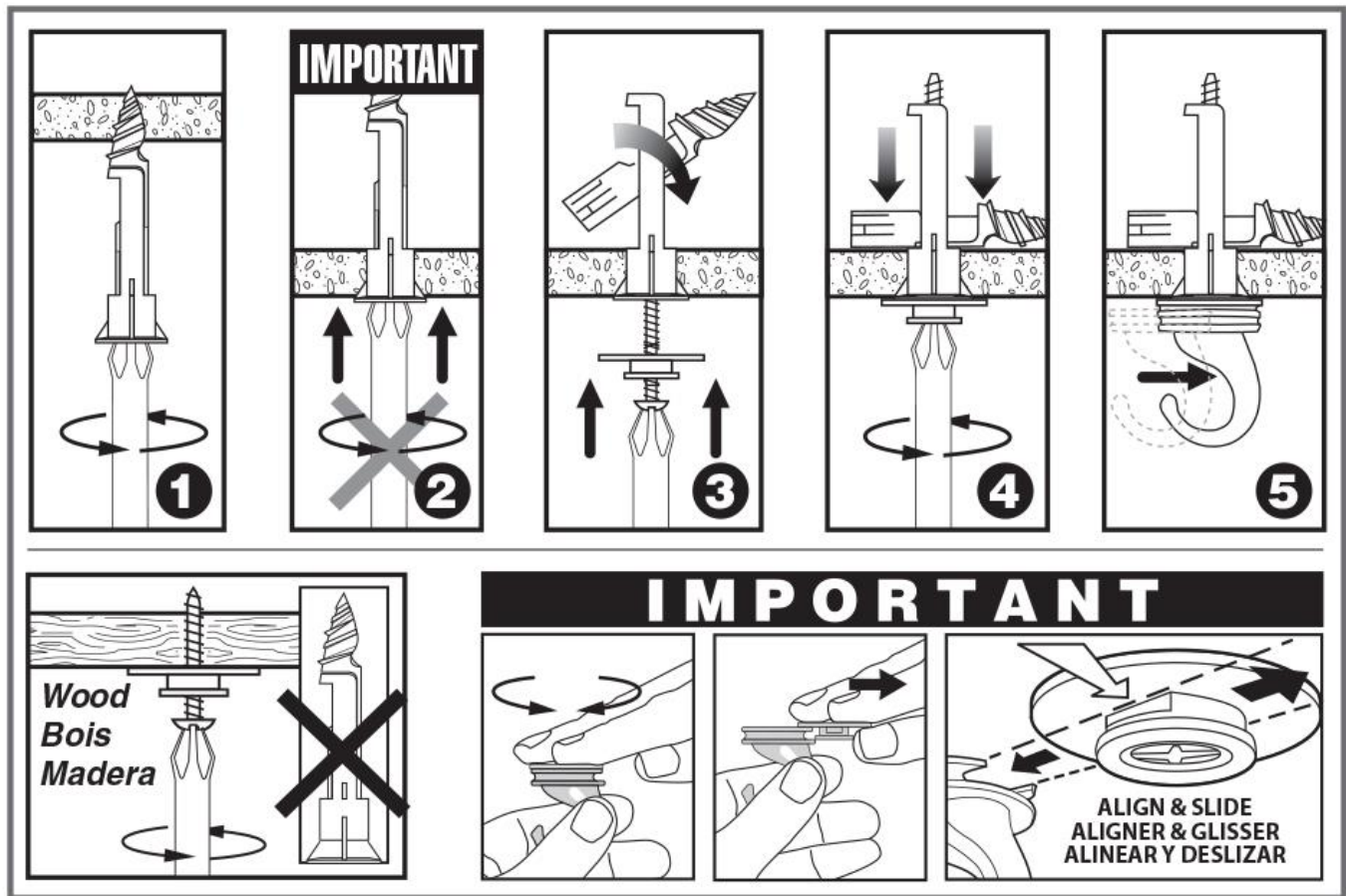


Installation instructions



1. Using a screwdriver, pierce the ceiling with the tip of the DrillerToggle™, and screw clockwise.
2. Once the threaded portion is screwed into the ceiling, push the anchor through until it is flush to the ceiling.
3. Insert the screw through the metal round base.
4. Turn clockwise until there is a firm resistance.
5. Slide the hook into the metal round base.