

HOME  
DECORATORS  
COLLECTION

# KITCHEN & BATH CABINETS

Semi Custom | Ships in 7-10 Days

*Newport Pacific White  
and Midtown High Gloss Metallic*

Also includes:  
METROPOLITAN  
S E R I E S



## FALL 2023 NEW PRODUCTS SPECIFICATION GUIDE

Ships in 7-10 Days | Plywood Cabinetry | Soft Close Doors & Drawers  
Factory Built in the USA | Limited Lifetime Warranty

For use with 20/20 catalogs: HOME\_DEC, HOME\_DC2

 HDCKitchens.com  866-373-9131

HDCKitchens.com



HomerDesignTools.com



Exclusively at





# Semi-Custom Kitchen & Bath Cabinetry

## Limited Lifetime Warranty

Ideal Cabinetry® (warrantor) warrants to the original consumer purchaser, that all products manufactured or supplied by warrantor will be free from defects in material and workmanship. This warranty is for your lifetime as long as you own the cabinetry, on product used for Residential Purposes only and is not transferable to subsequent owners. Proof of Purchase is required.

This warranty does not cover damage resulting from normal wear, accident, misuse or lack of reasonable and necessary maintenance and service; nor does it warranty the improper installation or unauthorized repair, alteration, or modification or defects in the product when the product is installed. This warranty is limited to the repair or replacement of the defective part at the sole discretion of warrantor. Warranty is limited to Home Decorators Collection branded products excluding all electrical components: Excluded items may carry separate warranties as provided directly by the manufacturer of these products.

It is our option to provide repair parts or replace with functionally equivalent product. Return of product may be required for replacements. Such repair parts or replacement shall be at warrantor's expense, but customer shall bear all other expenses, including, but not limited to, cost of removal, transportation, re-installation, communication and any special service required by customer such as, overtime labor, etc.

Natural woods and finishes vary in color, grain pattern and exhibit color changes over time. Cabinets may darken or lighten with age due to exposure to certain environmental conditions including but not limited to sunlight, moisture, household cleaners, smoke, etc. Painted cabinets may show cracking at seams. These variations are considered the natural characteristics of the material and finishes and are not covered under this warranty.

In the event of a warranted product performance issue, submit request including proof of purchase documentation, specific description of warranty issue (include photos) in writing to:

Warranty Department  
210 Century Boulevard  
Bartow, FL 33830

Due to nature of materials and finishes Ideal Cabinetry cannot guarantee warranty replacement will be an exact match.

Ideal Cabinetry reserves the right to alter design, specifications and material without obligation to make changes to product previously manufactured.

EXCEPT TO THE EXTENT PROVIDED BY APPLICABLE LAW, ALL IMPLIED WARRANTIES, INCLUDING WARRANTIES OF MERCHANTABILITY AND FITNESS FOR A PARTICULAR PURPOSE, ARE LIMITED IN DURATION TO THE SHORTER OF THE PERIOD PROVIDED BY LAW OR THE PERIOD OF THIS WARRANTY, AND UNDER NO CIRCUMSTANCE SHALL HOME DECORATORS COLLECTION BE LIABLE FOR INCIDENTAL OR CONSEQUENTIAL DAMAGES SUSTAINED IN CONNECTION WITH THE PRODUCT. THE EXPRESS WARRANTY ABOVE CONSTITUTES THE ENTIRE WARRANTY AND IS IN LIEU OF ALL OTHERS EXPRESSED OR IMPLIED.

Some states do not allow the exclusion or limitation of incidental or consequential damages, or limitation on how long an implied warranty lasts, therefore, the above limitations or exclusions may not apply to you. This warranty gives you specific legal rights, and you may also have other rights, which vary from state to state.

### INDEMNITY

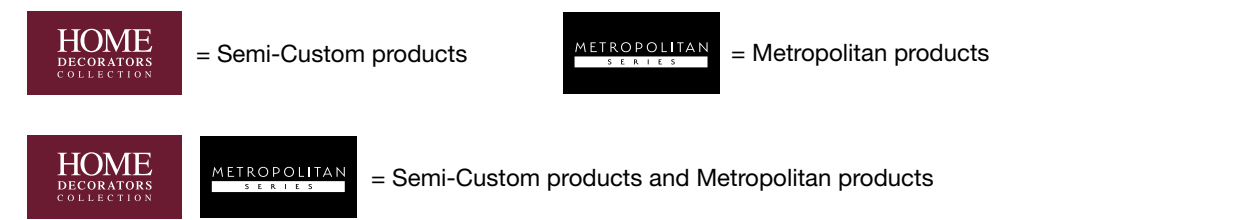
Ideal Cabinetry shall not be liable for either its failure to perform or its delays in performance hereunder arising out of or resulting from causes beyond its control, including but not limited to, acts of God, acts of Representation, acts of Government, wars, fires, floods, epidemics, quarantine, strike, freight embargoes, weather or default by suppliers due to any such causes.

## Table of Contents



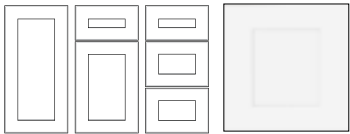
Semi-Custom Door Styles.....	2-3
Semi-Custom Cabinet Construction .....	4
Semi-Custom Customization Options.....	5
Semi-Custom Matching Interior Options .....	6
Metropolitan Door Styles .....	7-8
Metropolitan Cabinet Construction .....	9-22
Metropolitan Customization Options .....	23-31
Wall Cabinets .....	10-16
Base Cabinets .....	17-20
Accessories and Decorative Molding.....	21
Door Fronts Availability Guide.....	22
Drawer Fronts Availability Guide .....	23

Refer to the brand logo shown at the top of the page to identify applicable product lines:



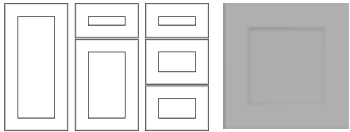
**PLEASE NOTE:** Line drawings are artistic representations of products for general dimensioning purposes. These should not be relied upon for accurate product appearance. Please consult the website or a designer if you have any questions or specific design requirements. Photography is for illustration purposes. Actual colors may vary slightly due to the printing process. We recommend ordering a sample door to see the color and finish you like for yourself.

Newport Pacific White (NPW)



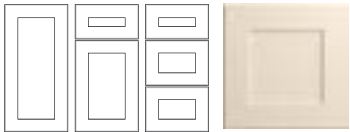
- 3/4" thick x 3" wide MDF Shaker framed doors with 5/8" thick solid MDF center panels
- 3/4" thick x 3" wide MDF Shaker framed drawer fronts with 5/8" thick solid MDF recessed center panels
- Soft close hinges & full extension drawers with soft close
- Available in White painted finish
- Decorative hardware required
- Available with glass doors or open cabinets

Tremont Pearl Gray (TPG)



- 3/4" thick x 3" wide MDF Shaker framed doors with 5/8" thick solid MDF center panels
- 3/4" thick x 3" wide MDF Shaker framed drawer fronts with 5/8" thick solid MDF recessed center panels
- Soft close hinges & full extension drawers with soft close
- Available in Gray painted finish
- Decorative hardware required
- Available with glass doors or open cabinets

Newport Blended Cream (NBC)



- 3/4" thick x 3" wide MDF Shaker framed doors with 5/8" thick Solid MDF center Panels
- 3/4" thick x 3" wide MDF Shaker framed drawer fronts with 5/8" thick Solid MDF center Panels
- Soft close hinges & full extension drawers with soft close
- Available in Cream painted finish
- Decorative hardware required
- Available with glass doors or open cabinets

Newport Deep Onyx (NDO)



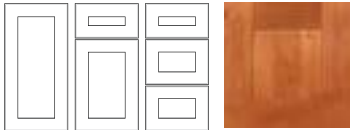
- 3/4" thick x 3" wide MDF Shaker framed doors with 5/8" thick Solid MDF center Panels
- 3/4" thick x 3" wide MDF Shaker framed drawer fronts with 5/8" thick Solid MDF center Panels
- Soft close hinges & full extension drawers with soft close
- Available in Deep Onyx painted finish
- Decorative hardware required
- Available with glass doors or open cabinets

Newport Mythic Blue (NMB)



- 3/4" thick x 3" wide MDF Shaker framed doors with 5/8" thick Solid MDF center Panels
- 3/4" thick x 3" wide MDF Shaker framed drawer fronts with 5/8" thick Solid MDF center Panels
- Soft close hinges & full extension drawers with soft close
- Available in Blue painted finish
- Decorative hardware required
- Available with glass doors or open cabinets

Hargrove Cinnamon (HCN)



- 3/4" thick x 3" wide solid maple Shaker mortise and tenon framed doors with 5/8" thick veneer over MDF recessed center panels
- 3/4" thick x 3" wide solid maple Shaker mortise and tenon framed drawer fronts with 5/8" thick veneer over MDF recessed center panels
- Soft close hinges & full extension drawers with soft close
- Available in Cinnamon stain finish
- Decorative hardware required
- Available with glass doors or open cabinets

Franklin Manganite (FMG)



- 3/4" thick x 3" wide solid maple Shaker mortise and tenon framed doors with 5/8" thick veneer over MDF recessed center panels
- 3/4" thick x 3" wide solid maple Shaker mortise and tenon framed drawer fronts with 5/8" thick veneer over MDF recessed center panels
- Soft close hinges & full extension drawers with soft close
- Available in dark Mocha stain finish
- Decorative hardware required
- Available with glass doors or open cabinets

**All of our painted door styles feature solid wood painted face frames.** As with any painted wood surface, expansion and contraction with changes in climate may cause fractures in the paint surface at joints. This is an acceptable characteristic and will vary based on climate conditions. In addition, there may be a slight color shift over time due to continued exposure to both natural and artificial light.

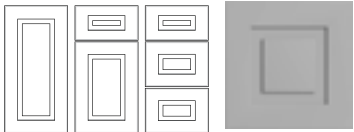
Full Overlay cabinetry is constructed from various pieces of solid wood and wood veneers. Differences in grain pattern and color should be expected. Color differences in wood are the result of variations in minerals found in the soil native to the tree's origin. Absorption of these minerals will vary by tree or parts of said tree. In addition, color changes can be experienced due to different exposure to light. All species of wood will display characteristics such as knots, pinholes, sap runs, mineral streaks and darkening with age. It is the natural beauty of wood to exhibit these characteristics and they will be present throughout your cabinetry.

Grayson Pacific White (GPW)



- 3/4" thick x 3" wide MDF Shaker framed doors with 5/8" thick solid MDF raised center panels
- 3/4" thick x 3" wide MDF Shaker framed drawer fronts with 5/8" thick solid MDF raised center panels
- Soft close hinges & full extension drawers with soft close
- Available in White painted finish
- Decorative hardware required
- Available with glass doors or open cabinets
- 9" wide and smaller doors will not feature a raised center panel

Grayson Pearl Gray (GPG)



- 3/4" thick x 3" wide MDF Shaker framed doors with 5/8" thick solid MDF raised center panels
- 3/4" thick x 3" wide MDF Shaker framed drawer fronts with 5/8" thick solid MDF raised center panels
- Soft close hinges & full extension drawers with soft close
- Available in Gray painted finish
- Decorative hardware required
- Available with glass doors or open cabinets
- 9" wide and smaller doors will not feature a raised center panel

Grayson Deep Onyx (GDO)



- 3/4" thick x 3" wide MDF Shaker framed doors with 5/8" thick solid MDF raised center panels
- 3/4" thick x 3" wide MDF Shaker framed drawer fronts with 5/8" thick solid MDF raised center panels
- Soft close hinges & full extension drawers with soft close
- Available in Deep Onyx painted finish
- Decorative hardware required
- Available with glass doors or open cabinets
- 9" wide and smaller doors will not feature a raised center panel

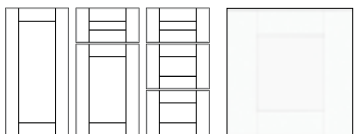
Grayson Mythic Blue (GMB)



- 3/4" thick x 3" wide MDF Shaker framed doors with 5/8" thick solid MDF raised center panels
- 3/4" thick x 3" wide MDF Shaker framed drawer fronts with 5/8" thick solid MDF raised center panels
- Soft close hinges & full extension drawers with soft close
- Available in Blue painted finish
- Decorative hardware required
- Available with glass doors or open cabinets
- 9" wide and smaller doors will not feature a raised center panel

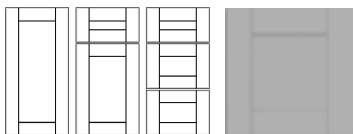
Thermofoil Shaker Door Styles

Washington Vesper White (WVW)



- 3/4" thick x 3" vinyl clad MDF recessed panel doors with flat melamine back
- 3/4" thick x 3" vinyl clad MDF recessed panel drawer fronts with flat melamine back
- Soft close hinges & full extension drawers with soft close
- Available in White vinyl finish
- Decorative hardware required
- Not available with glass doors
- Available with open cabinets

Washington Veiled Gray (WVG)



- 3/4" thick x 3" vinyl clad MDF recessed panel doors with flat melamine back
- 3/4" thick x 3" vinyl clad MDF recessed panel drawer fronts with flat melamine back
- Soft close hinges & full extension drawers with soft close
- Available in Gray vinyl finish
- Decorative hardware required
- Not available with glass doors
- Available with open cabinets

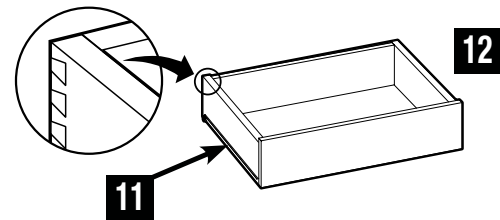
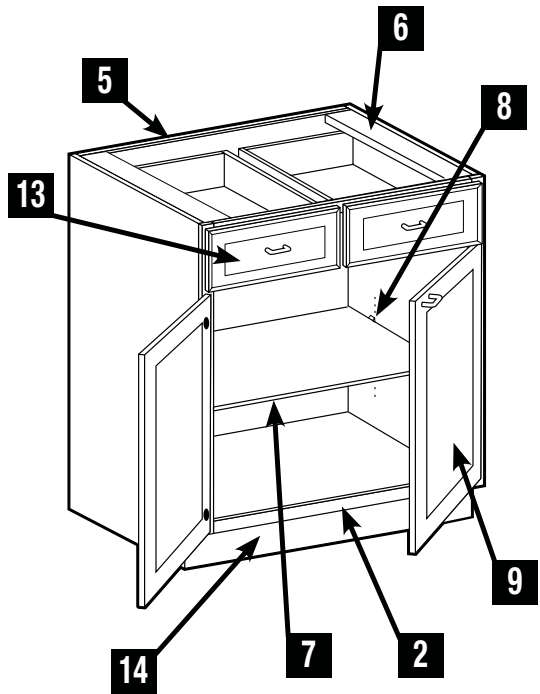
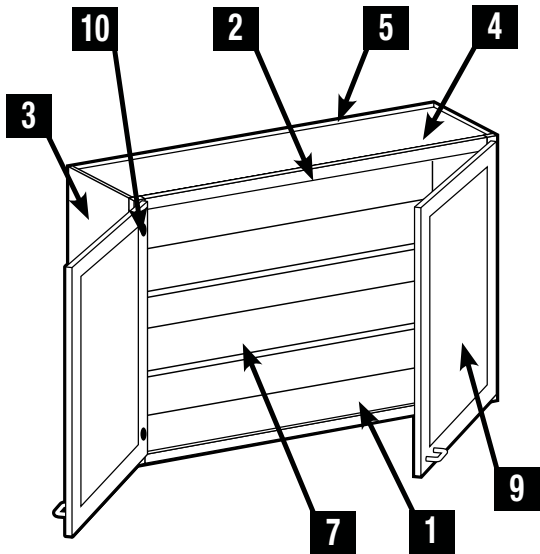
Washington Vessel Blue (WVB)



- 3/4" thick x 3" vinyl clad MDF recessed panel doors with flat white melamine back
- 3/4" thick x 3" vinyl clad MDF recessed panel drawer fronts with flat white melamine back
- Soft close hinges & full extension drawers with soft close
- Available in Blue vinyl finish
- Decorative hardware required
- Not available with glass doors
- Available with open cabinets

Photography is for illustration purposes. Actual colors may vary slightly due to the printing process. We recommend ordering a sample door to see the color and finish you like for yourself.





1	INTERIOR	Natural birch laminate provides a durable, wipe clean finish.
2	FACE FRAME	1½" wide x 3/4" thick solid hardwood pocket screwed.
3	END PANELS	1/2" thick CARB2 plywood, exterior laminate is color matched to the face frame.
4	FLOOR & CEILING	1/2" thick CARB2 plywood with natural birch laminate interior and raw exterior. Both ends captured by end panels.
5	BACK PANELS	1/2" thick CARB2 plywood with natural birch laminate interior and raw exterior. The 'clipped' back panels on Wall Angle and Easy Reach Corner cabinets will be 1/4" plywood.
6	"I-BEAM" SUPPORTS	1/2" thick CARB2 plywood, full depth braces provide stability and support for countertop attachment.
7	ADJUSTABLE SHELVES	3/4" thick CARB2 plywood finished with natural birch laminate and matching edgebanding. Base and wall adjustable shelves are full depth. 75 lb. weight capacity
8	SHELF SUPPORTS	Clear, high strength plastic with locking top tab to prevent shelf tip. Provides easy shelf adjustment.
9	DOORS	Stylish, full-overlay doors available in stained hardwoods or MDF. See pages 2-3 for details.
10	HINGES	Fully concealed 110° opening Soft Close hinges with 6-way adjustment for ease of alignment.
11	RUNNERS/GLIDES	Drawers and interior roll-out trays feature smooth gliding, full extension, ball bearing runners with Soft Closing shocks that engage when drawer is 1" from closed. They are rated for 100lb static and 75lb dynamic loads."
12	DRAWERS & ROLL-OUT TRAYS	5/8" thick finger jointed hardwood four sided dovetail box construction, finished with a clear top coat and a 1/4" thick captured plywood floor. 75 lb. weight capacity
13	DRAWER FRONTS	Stylish full overlay drawer fronts. See pages 2-3 for details. For Standard kitchen base cabinets, the drawer front is 8" high. For drawer base cabinets, the top drawer front is 8" high and the bottom two drawer fronts are 10 1/2" high.
14	INTEGRAL TOE KICK	1/2" thick plywood secured between end panels. Provides solid backing for installation of Matching Toe Kick (MTK8) or other materials such as ceramic, vinyl, etc.

## FINISHED END OPTIONS



**1. All Cabinet Sides** are manufactured from ½" thick CARB2 compliant plywood covered with a laminate which is color-matched to the face frame and doors.



**2. Optional Matching End Panels** are ¾" thick overlay panels that match the construction of the door style selected. They are available for standard depth base cabinets (MBEP) and standard depth wall cabinets in three heights (MWEP30, MWEP36, MWEP42). Matching End Panels are packaged separately for field installation.

## CUSTOM DEPTH

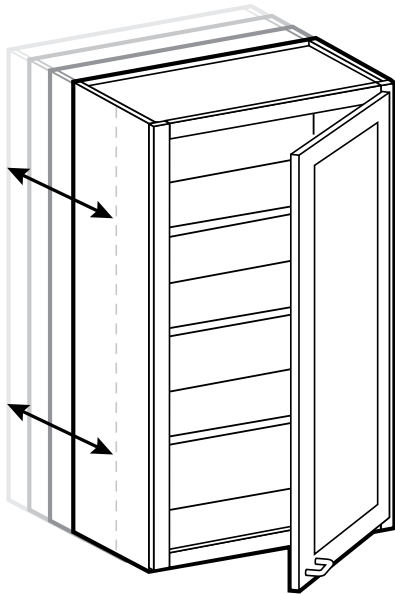
CABINET TYPE	CUSTOM DEPTH MIN-MAX
12" DEEP WALL	5" to 15"
24" DEEP WALL	16" to 23"
STANDARD BASE*	9" to 23"
BASE DRAWER*	15" to 23"
TALL UTILITY/LINEN	9" to 23"

- Available on standard cabinet types in 1" depth increments

\* Base cabinets with drawers that are customized from 15" to 23" deep will include working drawers. 9" to 14" deep cabinets will have no drawer and a false drawer front.

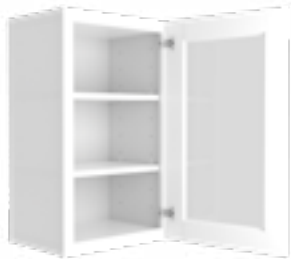
\* Vanity cabinets can be customized by selecting the standard base version. For example: select BD18 instead of a VBD1821 and customize the depth.

\* Custom Depth changes need to be added to the cabinet before the order is placed. This can be done in your design program or in the shopping cart.



Wall Cabinets prepared for glass (PFG)

Found on pages 13-14



- Wall cabinets traditional door frames will be routed and prepared for clear glass (PFG).
- Clear glass panels will be furnished cut to size and will ship separately, direct to the ship-to address, for field installation
- It is recommended that the glass panels be installed with clear silicone
- PFG cabinet interiors will automatically be finished to match the face frame color, including adjustable shelves
- Not available in WVB/WVG/WVV door styles

Tall Cabinets prepared for glass (PFG)

Found in the full Specification Guide

- Not available in WVB/WVG/WVV door styles.

Vanity linen Cabinets prepared for glass (PFG)

Found in the full Specification Guide



- Tall Utility/Vanity Linen cabinets – only the upper door frames will be routed and prepped for clear glass (PFG).
- Matching Interior shelves are only supplied for the upper portion of the cabinet, where the PFG doors are located when roll out trays are indicated.
- Lower portion will have solid finger jointed hardwood roll out trays if roll out trays are indicated
- Standard Base, Vanity Base, and lower doors on Tall cabinets are not available Prepped For Glass as a safety precaution
- Not available in WVB/WVG/WVV door styles.

Wall Cabinets with no doors (ND)

Found on pages 15-16



Tall Cabinets with no doors (ND)

Found in the full Specification Guide

Vanity linen Cabinets with no doors (ND)

Found in the full Specification Guide



Base Cabinets with no doors (ND)

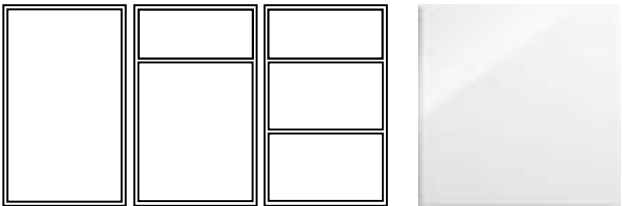
Found in the full Specification Guide



- ‘No Door’ cabinet interiors and shelves will be finished to match the face frame color

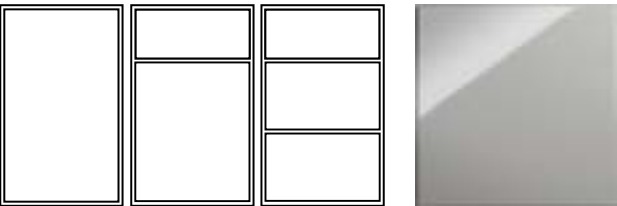
## Flat Panel Door Styles

Midtown High Gloss White (MHW)



- 3/4" thick melamine faced MDF with scratch resistant high gloss lacquer finish
  - 2x as scratch resistant as thermofoil (PVC/PET)
  - 6x more scratch resistant than acrylic
- Full Overlay door style, on a solid hardwood face frame
- Edges sealed with color-matched PVC edge banding
- Doors are mounted on a white painted face frame
- 6-way adjustable, soft-close concealed hinges
- Decorative hardware required

Midtown High Gloss Metallic (MHM)



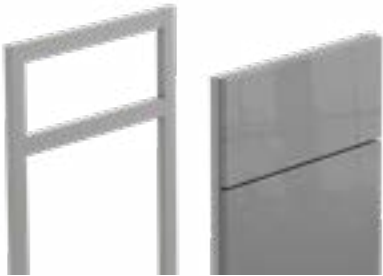
- 3/4" thick melamine faced MDF with scratch resistant high gloss lacquer finish
  - 2x as scratch resistant as thermofoil (PVC/PET)
  - 6x more scratch resistant than acrylic
- Full Overlay door style, on a solid hardwood face frame
- Edges sealed with color-matched PVC edge banding
- Doors are mounted on a gray painted face frame
- 6-way adjustable, soft-close concealed hinges
- Decorative hardware required

## FACE FRAMES AND DOOR FINISHES

Our modern Metro cabinetry has the European look with traditional craftsmanship. The streamlined doors will come on a semi-custom built box with a face frame in one of two complimentary colors.



White Face Frame



Gray Face Frame

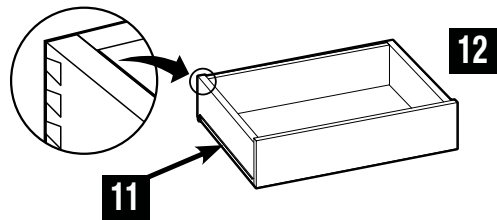
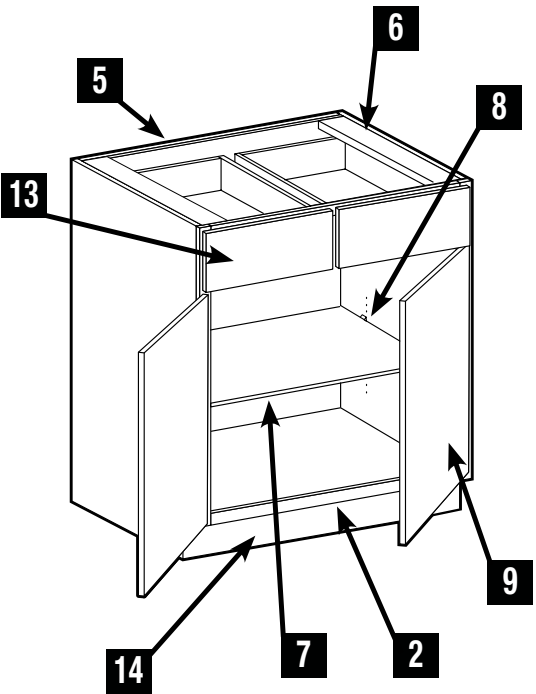
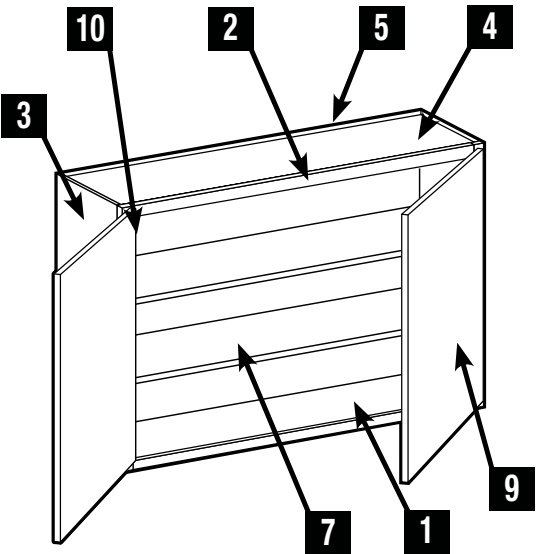
## FINISHED ENDS OPTIONS



1. **Cabinet box sides** are manufactured to color match the cabinet's face frame.



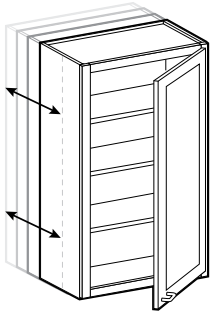
2. **Cover Panels** are 3/4" thick and will match the doors/drawers. Cover Panels are 1" wider and are designed to align flush with the front of the door/drawer and create the look of an inset doorstyle. They are available for base, wall, and tall cabinets and can be found on pages 28-29. Cover Panels must be ordered separately for field modification and installation.



1	INTERIOR	Natural birch laminate provides a durable, wipe clean finish.
2	FACE FRAME	1½" wide x 3/4" thick painted solid hardwood, pocket screwed
3	END PANELS	1/2" thick CARB2 plywood, exterior laminate is color matched to face frame.
4	FLOOR & CEILING	1/2" thick CARB2 plywood with natural birch laminate interior and raw exterior. Both ends captured by end panels.
5	BACK PANELS	1/2" thick CARB2 plywood with natural birch laminate interior and raw exterior. The 'clipped' back panels on Wall Angle and Easy Reach Corner cabinets will be 1/4".
6	"I-BEAM" SUPPORTS	1/2" thick CARB2 plywood, full depth braces provide stability and support for countertop attachment.
7	ADJUSTABLE SHELVES	3/4" thick CARB2 plywood with natural birch laminate both sides with matching edgebanding. Base and wall adjustable shelves are full depth.
8	SHELF SUPPORTS	Clear, high strength plastic with locking top tab to prevent shelf tip. Provides easy shelf adjustment.
9	DOORS	Contemporary, full-overlay doors available in a durable melamine finish. See page 3 for details.
10	HINGES	Fully concealed 110° opening Soft Close hinges with 6-way adjustment for ease of alignment.
11	RUNNERS/ GLIDES	Drawers and interior roll-out trays feature smooth gliding, full extension, ball bearing runners with Soft Closing shocks that engage when drawer is 1" from closed. They are rated for 100lb static and 75lb dynamic loads.
12	DRAWERS & ROLL-OUT TRAYS	5/8" thick finger jointed hardwood four sided dovetail box construction, finished with a clear topcoat and a 1/4" thick captured plywood floor.
13	DRAWER FRONTS	Contemporary, full-overlay drawers available in a durable melamine finish. The top drawer front is 8" high & the bottom two drawer fronts are 10 1/2" high See page 3 for details.
14	INTEGRAL TOE KICK	1/2" thick plywood secured between end panels. Provides solid backing for installation of Toe Kick Filler Strip (TKFS8) or other materials such as ceramic, etc.

## CUSTOM DEPTH

CABINET TYPE	CUSTOM DEPTH MIN-MAX
12" DEEP WALL	5" to 15"
24" DEEP WALL	16" to 23"
STANDARD BASE	9" to 23"
BASE DRAWER*	15" to 23"
TALL UTILITY/LINEN	9" to 23"



- Available on standard cabinet types in 1" depth increments
- \* Base cabinets with drawers that are customized from 15" to 23" deep will include working drawers. 9" to 14" deep cabinets will have no drawer and a false drawer front.
- \* Design and Order Tip: If a cabinet needs to be a custom depth, the depth modification needs to be done before the cabinet order is placed. This modification can be done in 2020 design or in the shopping cart on the website.



High Gloss Metallic with High Gloss White

The use of full height base cabinets and drawer stacks will help the kitchen to achieve the true metropolitan look. Use the full height cabinets as sink bases, cooktop bases and more!



High Gloss Metallic

Using cover panels on the sides, top and bottom of the wall cabinet and waterfall countertops on the base cabinets will create an inset door look in your new kitchen. Using horizontal hardware placement completes the look!



High Gloss White

Modern



High Gloss White

Traditional

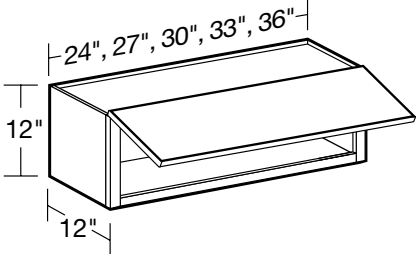
Give the kitchen a true metropolitan look by combining full height doors and drawer bases, verses standard drawer and door cabinets. Also simply installing the hardware horizontally on all cabinets can complete the look!



<div><div>WALL CABINET CODING</div><div><div>STANDARD (12" DEEP)</div><div>W 30 30</div><div>Cabinet CodeCabinet WidthCabinet Height</div></div><div><div>REFRIGERATOR (24" DEEP)</div><div>W 36 24 18</div><div>Cabinet CodeCabinet WidthCabinet DepthCabinet Height</div></div></div> <div><div><ul style="list-style-type: none"><li>All wall cabinets are 12" deep unless otherwise noted. Actual height of 24" high cabinets is 23½" overall. Refrigerator wall cabinets are 24" deep.</li><li>Cabinet depth does not include door thickness</li><li>Products are available in all door styles unless stated otherwise</li><li>Standard cabinet exterior sides are color matched to face frame</li><li>Soft close hinges unless stated otherwise</li></ul></div></div>		<div><div>15" High Double Door</div><div><div></div><div><div>CUSTOM DEPTH</div><div>W2415</div><div>W2715</div><div>W3015</div><div>W3315</div><div>W3615</div></div></div><div><div><ul style="list-style-type: none"><li>No adjustable shelf</li><li>CUSTOM DEPTH: 5" to 15" deep</li></ul></div></div></div>
<div><div>12" High Double Door</div><div><div></div><div><div>CUSTOM DEPTH</div><div>W2412</div><div>W2712</div><div>W3012</div><div>W3312</div><div>W3612</div></div></div><div><div><ul style="list-style-type: none"><li>No adjustable shelf</li><li>CUSTOM DEPTH: 5" to 15" deep</li></ul></div></div></div>		<div><div>15" High x 24" Deep Double Door</div><div><div></div><div><div>CUSTOM DEPTH</div><div>W242415</div><div>W272415</div><div>W302415</div><div>W332415</div><div>W362415</div></div></div><div><div><ul style="list-style-type: none"><li>No adjustable shelf</li><li>Must be supported from back and both sides</li><li>CUSTOM DEPTH: 16" to 23" deep</li></ul></div></div></div>
<div><div>12" High x 24" Deep Double Door</div><div><div></div><div><div>CUSTOM DEPTH</div><div>W242412</div><div>W272412</div><div>W302412</div><div>W332412</div><div>W362412</div></div></div><div><div><ul style="list-style-type: none"><li>No adjustable shelf</li><li>Must be supported from back and both sides</li><li>CUSTOM DEPTH: 16" to 23" deep</li></ul></div></div></div>		<div><div>18" High Double Door</div><div><div></div><div><div>CUSTOM DEPTH</div><div>W2418</div><div>W2718</div><div>W3018</div><div>W3318</div><div>W3618</div></div></div><div><div><ul style="list-style-type: none"><li>No adjustable shelf</li><li>CUSTOM DEPTH: 5" to 15" deep</li></ul></div></div></div>

<div><div>18" High x 24" Deep Double Door</div><div><div></div><div><div>CUSTOM DEPTH</div><div>W242418</div><div>W272418</div><div>W302418</div><div>W332418</div><div>W362418</div></div></div><div><div><ul style="list-style-type: none"><li>No adjustable shelf</li><li>Must be supported from back and both sides</li><li>CUSTOM DEPTH: 16" to 23" deep</li></ul></div></div></div>	<div><div>24" High Double Door</div><div><div></div><div><div>CUSTOM DEPTH</div><div>W2424</div><div>W2724</div><div>W3024</div><div>W3324</div><div>W3624</div></div></div><div><div><ul style="list-style-type: none"><li>One adjustable shelf</li><li>CUSTOM DEPTH: 5" to 15" deep</li></ul></div></div></div>
<div><div>24" High x 24" Deep Double Door</div><div><div></div><div><div>CUSTOM DEPTH</div><div>W242424</div><div>W272424</div><div>W302424</div><div>W332424</div><div>W362424</div></div></div><div><div><ul style="list-style-type: none"><li>One adjustable shelf</li><li>Must be supported from back and both sides</li><li>CUSTOM DEPTH: 16" to 23" deep</li></ul></div></div></div>	

12" High Uplift



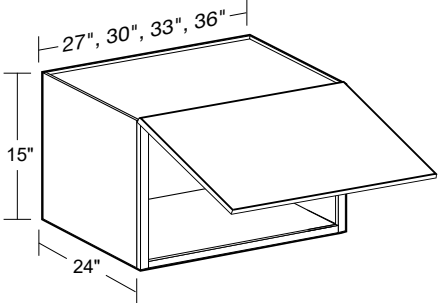
CUSTOM  
DEPTH

W2412UL  
W2712UL  
W3012UL  
W3312UL  
W3612UL

- No adjustable shelf

- CUSTOM DEPTH: 5" to 15" deep

15" High x 24" Deep Uplift



CUSTOM  
DEPTH

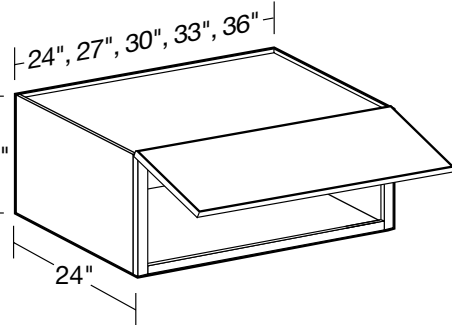
W272415UL  
W302415UL  
W332415UL  
W362415UL

- No adjustable shelf

- Must be installed between two cabinets, cabinet and wall, or supported by CPVT's.

- CUSTOM DEPTH: 16" to 23" deep

12" High x 24" Deep Uplift



CUSTOM  
DEPTH

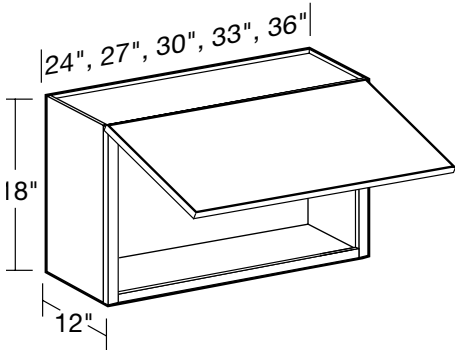
W242412UL  
W272412UL  
W302412UL  
W332412UL  
W362412UL

- No adjustable shelf

- Must be installed between two cabinets, cabinet and wall, or supported by CPVT's.

- CUSTOM DEPTH: 16" to 23" deep

18" High Uplift



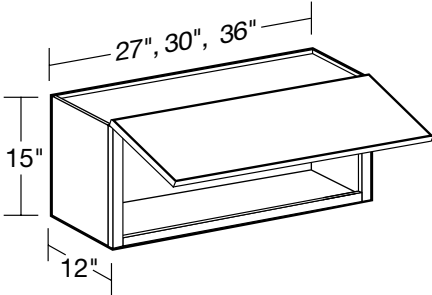
CUSTOM  
DEPTH

W2418UL  
W2718UL  
W3018UL  
W3318UL  
W3618UL

- No adjustable shelf

- CUSTOM DEPTH: 5" to 15" deep

15" High Uplift



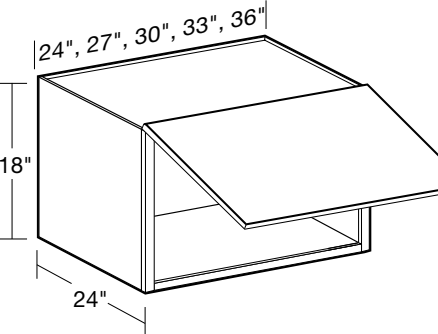
CUSTOM  
DEPTH

W2715UL  
W3015UL  
W3615UL

- No adjustable shelf

- CUSTOM DEPTH: 5" to 15" deep

18" High x 24" Deep Uplift



CUSTOM  
DEPTH

W242418UL  
W272418UL  
W302418UL  
W332418UL  
W362418UL

- No adjustable shelf

- Must be installed between two cabinets, cabinet and wall, or supported by CPVT's

- CUSTOM DEPTH: 16" to 23" deep

WALL CABINET CODING

STANDARD (12" DEEP)

W 30 30

Cabinet Code Cabinet Width Cabinet Height

REFRIGERATOR (24" DEEP)

W 36 24 18

Cabinet Code Cabinet Width Cabinet Depth Cabinet Height

- Standard wall cabinets are 12" deep. Refrigerator wall cabinets are 24" deep.

- Cabinet depth does not include door thickness

- Not available in WVV, WVG or WVB

- Standard cabinet exterior sides are color matched to face frame

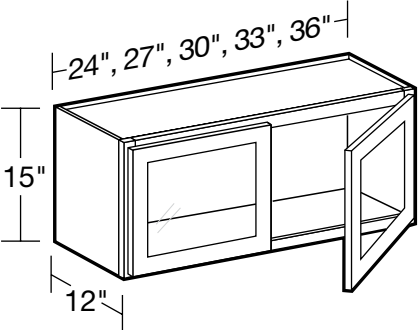
- Clear glass ships separate from cabinets

- Matching interiors are standard in PFG cabinets

- Soft close hinges

- Shelf adjustment holes on the interior sides and back of cabinets will be visible

15" High Double Door



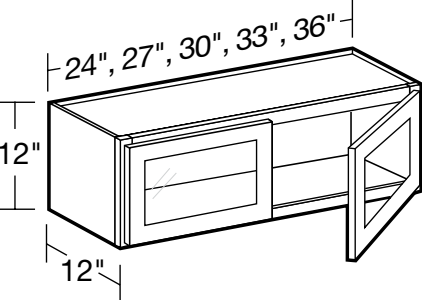
CUSTOM  
DEPTH

W2415PFG  
W2715PFG  
W3015PFG  
W3315PFG  
W3615PFG

- No adjustable shelf

- CUSTOM DEPTH: 5" to 15" deep

12" High Double Door



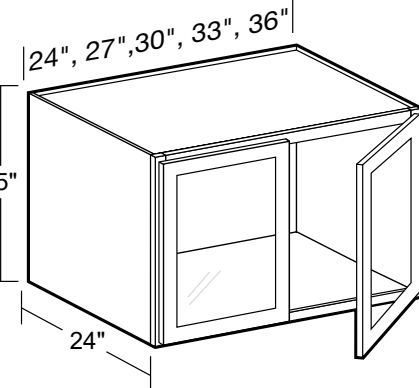
CUSTOM  
DEPTH

W2412PFG  
W2712PFG  
W3012PFG  
W3312PFG  
W3612PFG

- No adjustable shelf

- CUSTOM DEPTH: 5" to 15" deep

15" High x 24" Deep Double Door



CUSTOM  
DEPTH

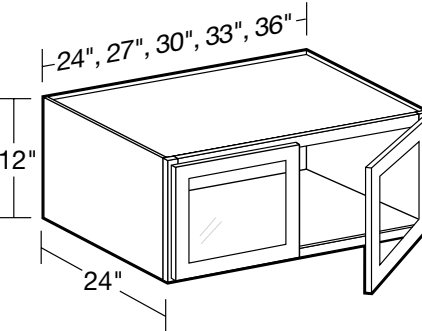
W242415PFG  
W272415PFG  
W302415PFG  
W332415PFG  
W362415PFG

- No adjustable shelf

- Must be supported from back and both sides

- CUSTOM DEPTH: 16" to 23" deep

12" High x 24" Deep Double Door



CUSTOM  
DEPTH

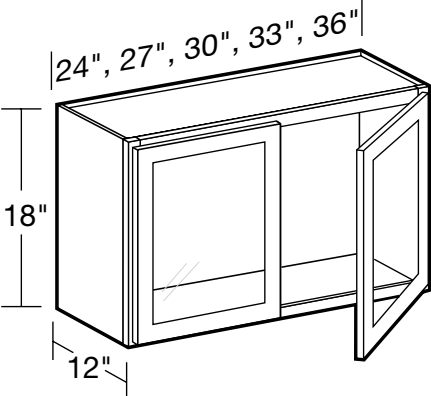
W242412PFG  
W272412PFG  
W302412PFG  
W332412PFG  
W362412PFG

- No adjustable shelf

- Must be supported from back and both sides

- CUSTOM DEPTH: 16" to 23" deep

18" High Double Door



CUSTOM  
DEPTH

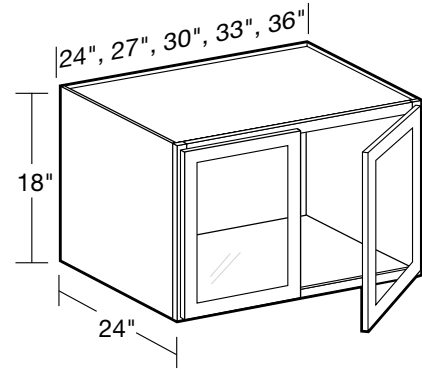
W2418PFG  
W2718PFG  
W3018PFG  
W3318PFG  
W3618PFG

- No adjustable shelf

- CUSTOM DEPTH: 5" to 15" deep



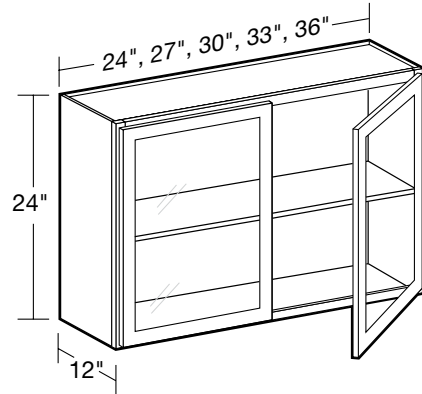
18" High x 24" Deep Double Door



W242418PFG  
W272418PFG  
W302418PFG  
W332418PFG  
W362418PFG

- No adjustable shelf
- Must be supported from back and both sides
- **CUSTOM DEPTH: 16" to 23" deep**

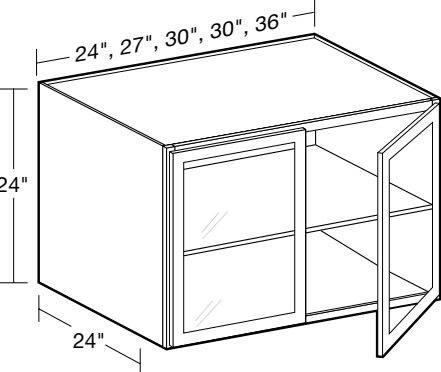
24" High Double Door



W2424PFG  
W2724PFG  
W3024PFG  
W3324PFG  
W3624PFG

- One adjustable shelf, matching cabinet finish
- **CUSTOM DEPTH: 5" to 15" deep**

24" High x 24" Deep Double Door



W242424PFG  
W272424PFG  
W302424PFG  
W332424PFG  
W362424PFG

- One adjustable shelf, matching cabinet finish
- Must be supported from back and both sides
- **CUSTOM DEPTH: 16" to 23" deep**

WALL CABINET CODING

STANDARD (12" DEEP)

W 30 30

Cabinet Code Cabinet Width Cabinet Height

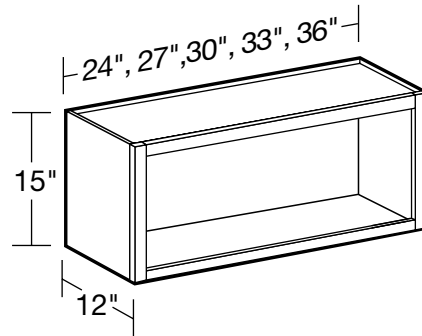
REFRIGERATOR (24" DEEP)

W 36 24 18

Cabinet Code Cabinet Width Cabinet Depth Cabinet Height

- Standard wall cabinets are 12" deep. Refrigerator wall cabinets are 24" deep.
- Matching interiors are standard in wall cabinets with no door
- Products are available in all door styles unless stated otherwise
- Standard cabinet exterior sides are color matched to face frame
- No Doors
- **Shelf adjustment holes on the interior sides and back of cabinets will be visible**

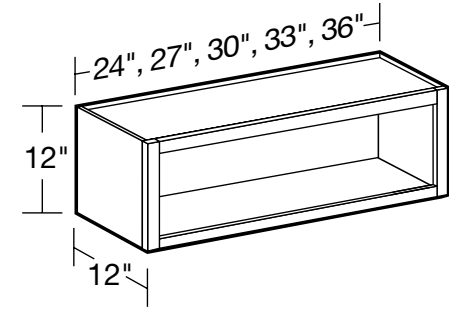
15" High No Door



W2415ND  
W2715ND  
W3015ND  
W3315ND  
W3615ND

- No adjustable shelf
- **CUSTOM DEPTH: 5" to 15" deep**

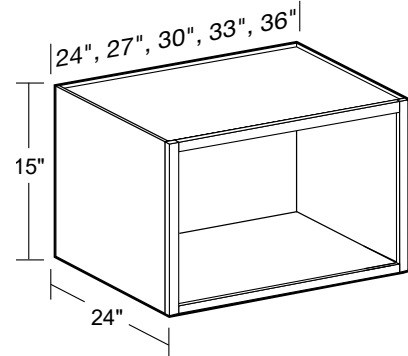
12" High No Door



W2412ND  
W2712ND  
W3012ND  
W3312ND  
W3612ND

- No adjustable shelf
- **CUSTOM DEPTH: 5" to 15" deep**

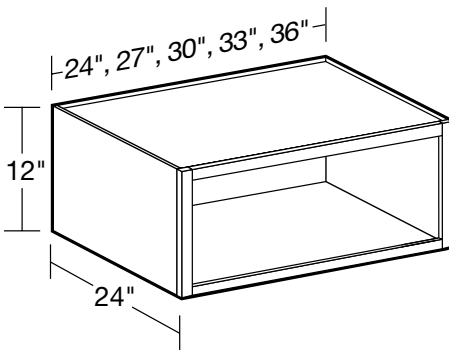
15" High x 24" Deep No Door



W242415ND  
W272415ND  
W302415ND  
W332415ND  
W362415ND

- No adjustable shelf
- Must be supported from back and both sides
- **CUSTOM DEPTH: 16" to 23" deep**

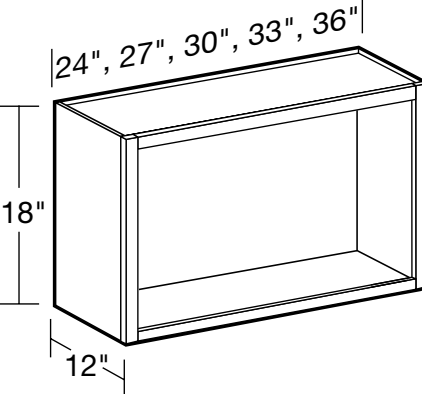
12" High x 24" Deep No Door



W242412ND  
W272412ND  
W302412ND  
W332412ND  
W362412ND

- No adjustable shelf
- Must be supported from back and both sides
- **CUSTOM DEPTH: 16" to 23" deep**

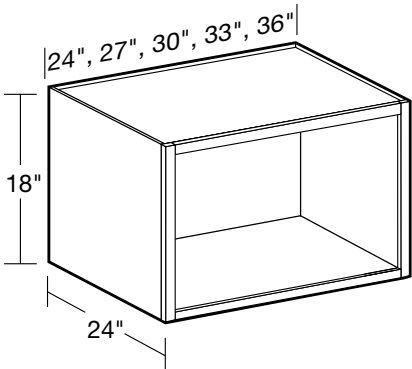
18" High No Door



W2418ND  
W2718ND  
W3018ND  
W3318ND  
W3618ND

- No adjustable shelf
- **CUSTOM DEPTH: 5" to 15" deep**

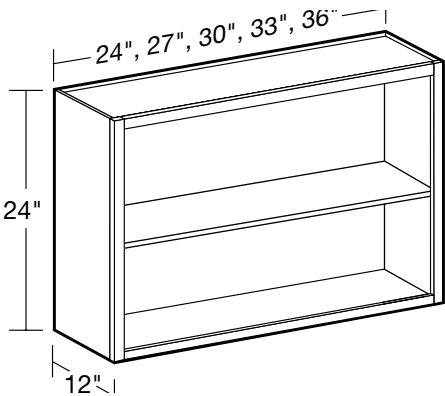
18" High x 24" Deep No Door



- W242418ND
- W272418ND
- W302418ND
- W332418ND
- W362418ND

- No adjustable shelf
- Must be supported from back and both sides
- **CUSTOM DEPTH: 16" to 23" deep**

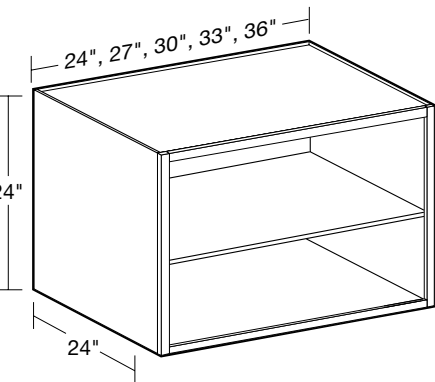
24" High No Door



- W2424ND
- W2724ND
- W3024ND
- W3324ND
- W3624ND

- One adjustable shelf, matching cabinet finish
- **CUSTOM DEPTH: 5" to 15" deep**

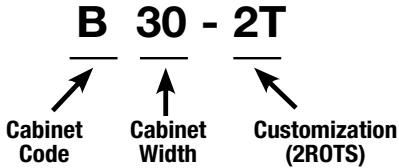
24" High x 24" Deep No Door



- W242424ND
- W272424ND
- W302424ND
- W332424ND
- W362424ND

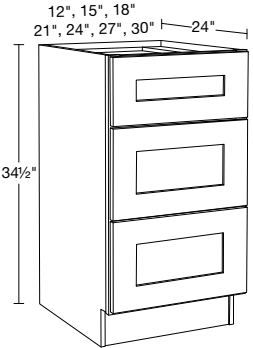
- One adjustable shelf, matching cabinet finish
- Must be supported from back and both sides
- **CUSTOM DEPTH: 16" to 23" deep**

BASE CABINET CODING



- Standard Base Cabinets are 24" deep and 34½" high
- Desk Height base cabinets are 21" deep and 28½" high
- Cabinet depth does not include door thickness
- Products are available in all door styles unless stated otherwise
- Standard cabinet exterior sides are color matched to face frame
- Base cabinets are shipped with an unfinished toekick. Finished toekicks must be ordered separately and field installed.
- Soft close hinges & full extension drawers with soft close unless otherwise stated.

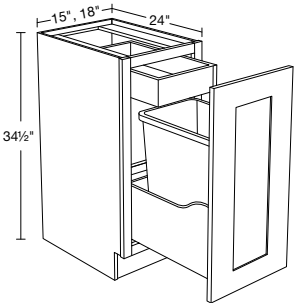
24" Deep Base - 3 Drawers



- BD12\*
- BD15
- BD18
- BD21
- BD24
- BD27
- BD30

- One standard top drawer
- Two deep drawers
- **CUSTOM DEPTH: 15" to 23" deep**
- \* Maximum drawer handle width is 4" wide for raised panel styles, 5½" wide for recessed panel styles.

24" Deep DELUXE Single 35 qt. Waste Basket Pullout

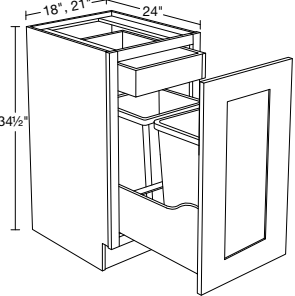


- B1DWB15
- B1DWB18

- Basket is removable
- Basket slides on heavy duty, full extension, Soft Close runners

- 35 quart white plastic basket sits in a dovetailed plywood drawer box
- Basket dimensions: 14"W x 10"D x 18"H
- Rollout tray not adjustable or removable
- Top mount roll-out tray for trash bag storage
- **SOFT CLOSE DOOR AND ROLL OUT TRAY INCLUDED!**

24" Deep DELUXE Double 35 qt. Waste Basket Pullout

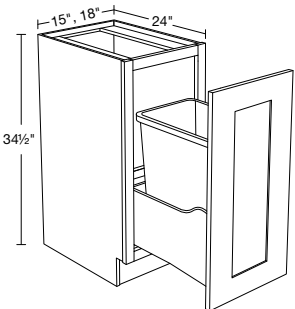


- B2DWB18
- B2DWB21

- Basket is removable
- Baskets slide on heavy duty, full extension, Soft Close runners

- Two 35 quart white plastic baskets sit in a dovetailed plywood drawer box
- Basket dimensions: 14"W x 10"D x 18"H
- Rollout tray not adjustable or removable
- Top mount roll-out tray for trash bag storage
- **SOFT CLOSE DOOR AND ROLL OUT TRAY INCLUDED!**

Base Full 55qt Single Wastebasket

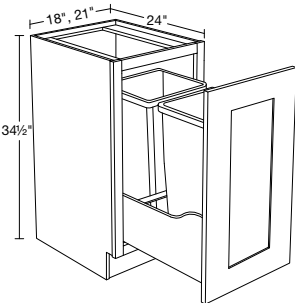


- B1LWB15
- B1LWB18

- Basket is removable
- Basket slides on heavy duty, full extension, Soft Close runners

- 35 quart white plastic basket sits in a dovetailed plywood drawer box
- Basket dimensions: 14"W x 10"D x 18"H
- Rollout tray not adjustable or removable
- Top mount roll-out tray for trash bag storage
- **SOFT CLOSE DOOR INCLUDED!**

Base Full 55qt Double Wastebasket

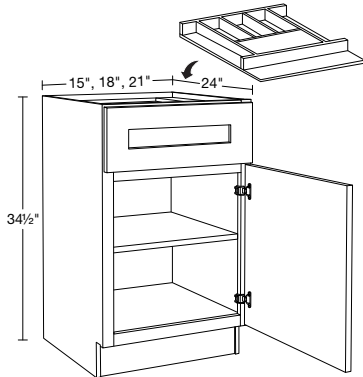


- B2LWB18
- B2LWB21

- Basket is removable
- Baskets slide on heavy duty, full extension, Soft Close runners

- Two 35 quart white plastic baskets sit in a dovetailed plywood drawer box
- Basket dimensions: 14"W x 10"D x 18"H
- Rollout tray not adjustable or removable
- Top mount roll-out tray for trash bag storage
- **SOFT CLOSE DOOR INCLUDED!**

24" Deep Single Door with Cutlery Tray



- One full-depth adjustable shelf
- Solid hardwood drawer insert
- 6 compartments 10"-14" deep (B15, B18)
- 8 compartments 10"-14" deep (B21)
- One full width front utensil compartment

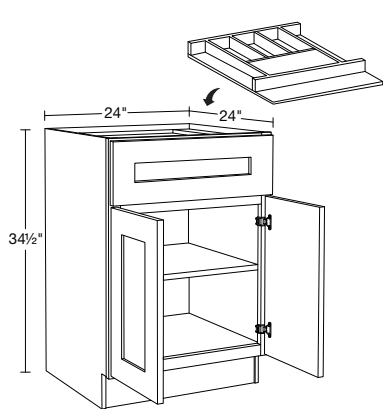
SPECIFY  
RIGHT or LEFT HINGED

**B15-CT**

**B18-CT**

**B21-CT**

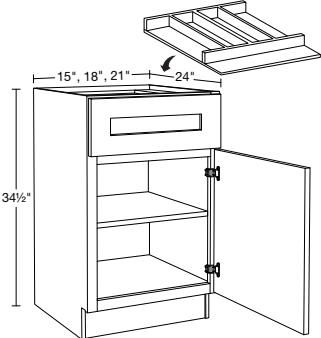
24" Deep Double Door with Cutlery Tray



- One full-depth adjustable shelf
- Solid hardwood drawer insert
- 8 compartments 10"-14" deep (B24)
- One full width front utensil compartment

**B24-CT**

24" Deep Single Door with Utensil Tray



- One full-depth adjustable shelf
- Solid hardwood drawer insert
- 2 additional compartments 16" deep (B15)
- 4 additional compartments 16" deep (B18)
- 5 additional compartments 16" deep (B21)
- One full width front utensil compartment

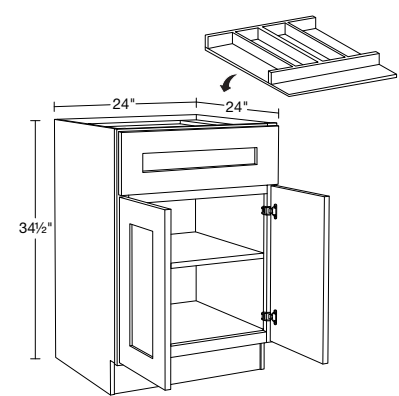
SPECIFY  
RIGHT or LEFT HINGED

**B15-UT**

**B18-UT**

**B21-UT**

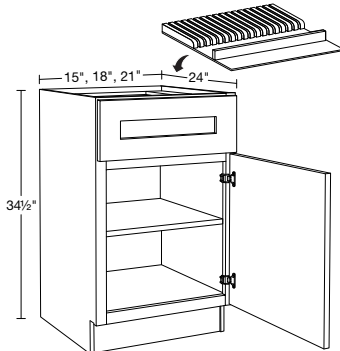
24" Deep Double Door with Utensil Tray



- One full-depth adjustable shelf
- Solid hardwood drawer insert
- 5 additional compartments 16" deep (B24)
- One full width front utensil compartment

**B24-UT**

24" Deep Single Door with Knife Block



- One full-depth adjustable shelf
- Solid hardwood drawer insert
- 10 knife slots + utensil compartment (B15)
- 13 knife slots + utensil compartment (B18)
- 16 knife slots + utensil compartment (B21)
- One full width front utensil compartment

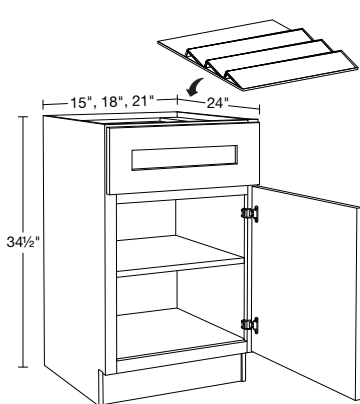
SPECIFY  
RIGHT or LEFT HINGED

**B15-KB**

**B18-KB**

**B21-KB**

24" Deep Single Door with Spice Tray



- One full-depth adjustable shelf
- Solid hardwood drawer insert
- Three 5" high angled tiers
- Rear 4" deep compartment

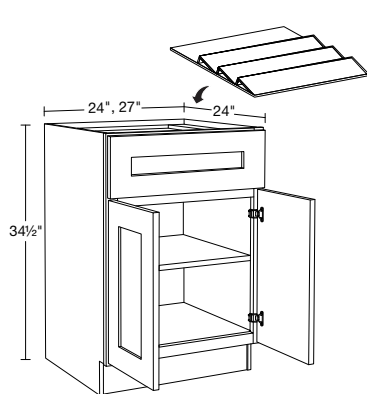
SPECIFY  
RIGHT or LEFT HINGED

**B15-ST**

**B18-ST**

**B21-ST**

24" Deep Double Door with Spice Tray



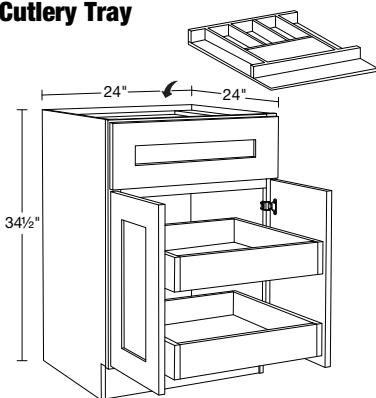
- One full-depth adjustable shelf
- Solid hardwood drawer insert
- Three 5" high angled tiers
- Rear 4" deep compartment

**B24-ST**

**B27-ST**

NOTE: Roll-out trays  
are not adjustable

24" Deep Double Door with 2 Roll-Out Trays and Cutlery Tray

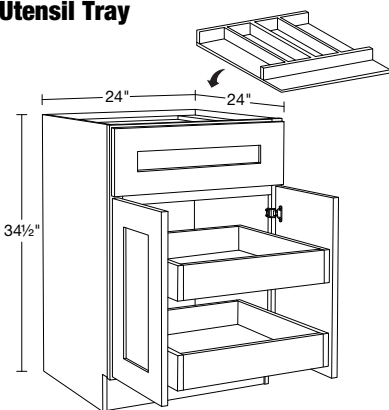


- Two full width soft close roll-out trays
- Solid hardwood drawer insert
- 8 compartments 10"-14" deep (B24)
- One full width front utensil compartment

**B24-2T-CT**

NOTE: Roll-out trays  
are not adjustable

24" Deep Double Door with 2 Roll-Out Trays and Utensil Tray

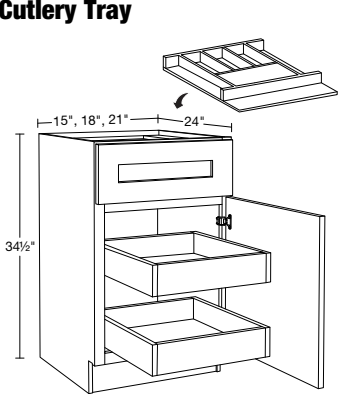


- Two full width soft close roll-out trays
- Solid hardwood drawer insert
- 5 additional compartments 16" deep (B24)
- One full width front utensil compartment

**B24-2T-UT**

NOTE: Roll-out trays  
are not adjustable

24" Deep Single Door with 2 Roll-Out Trays and Cutlery Tray



- Two full width soft close roll-out trays
- Solid hardwood drawer insert
- 6 compartments 10"-14" deep (B15, B18)
- 8 compartments 10"-14" deep (B21)

SPECIFY  
RIGHT or LEFT HINGED

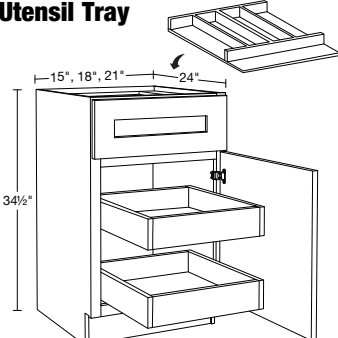
**B15-2T-CT**

**B18-2T-CT**

**B21-2T-CT**

NOTE: Roll-out trays  
are not adjustable

24" Deep Single Door with 2 Roll-Out Trays and Utensil Tray



- Two full width soft close roll-out trays
- Solid hardwood drawer insert
- 2 additional compartments 16" deep (B15)
- 4 additional compartments 16" deep (B18)
- 5 additional compartments 16" deep (B21)
- One full width front utensil compartment

SPECIFY  
RIGHT or LEFT HINGED

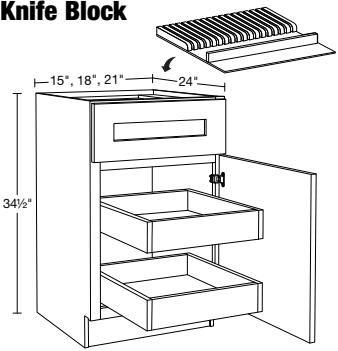
**B15-2T-UT**

**B18-2T-UT**

**B21-2T-UT**

NOTE: Roll-out trays  
are not adjustable

24" Deep Single Door with 2 Roll-Out Trays and Knife Block



- Two full width soft close roll-out trays
- Solid hardwood drawer insert
- 10 knife slots + utensil compartment (B15)
- 13 knife slots + utensil compartment (B18)
- 16 knife slots + utensil compartment (B21)
- One full width front utensil compartment

SPECIFY  
RIGHT or LEFT HINGED

**B15-2T-KB**

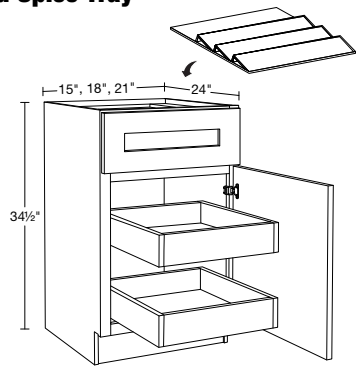
**B18-2T-KB**

**B21-2T-KB**

NOTE: Roll-out trays  
are not adjustable



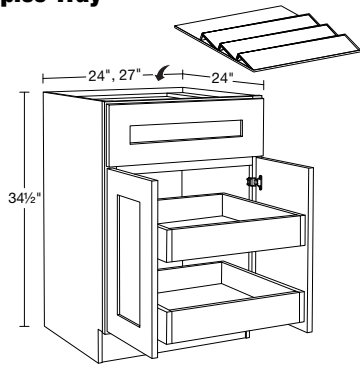
24" Deep Single Door with 2 Roll-Out Trays and Spice Tray



SPECIFY  
RIGHT or LEFT HINGED  
**B15-2T-ST**  
**B18-2T-ST**  
**B21-2T-ST**

- Two full width soft close roll-out trays
  - Solid hardwood drawer insert
  - Three 5" high angled tiers
  - Rear 4" deep compartment
- NOTE: Roll-out trays are not adjustable

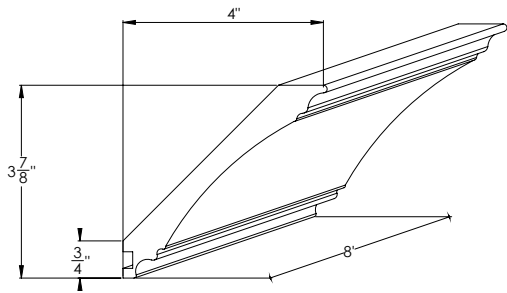
24" Deep Double Door with 2 Roll-Out Trays and Spice Tray



**B24-2T-ST**  
**B27-2T-ST**

- Two full width soft close roll-out trays
  - Solid hardwood drawer insert
  - Three 5" high angled tiers
  - Rear 4" deep compartment
- NOTE: Roll-out trays are not adjustable

Transitional Crown

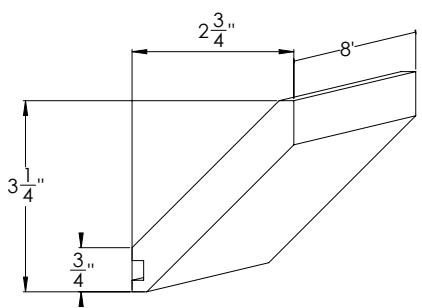


**TCM8**

- 3/4" thick solid wood
- Use with TMMS8 for top of cabinet installation

DESIGN TIP: When returning crown molding to the wall at the end of a run, allow at least 3" of wall space

Flat Shaker Angle Crown

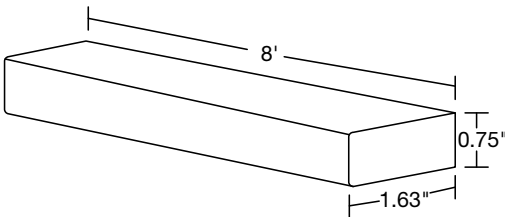


**FSM8**

- 3/4" thick solid wood
- Use with TMMS8 for top of cabinet installation

DESIGN TIP: When returning crown molding to the wall at the end of a run, allow at least 3" of wall space

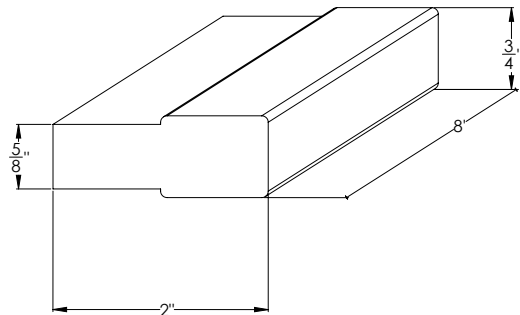
Shaker Light Rail



**LRM8**

- 3/4" thick solid wood

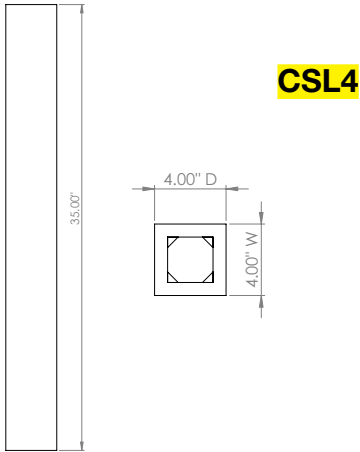
Stack Molding



**STM8**

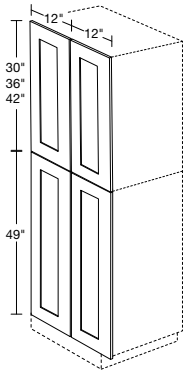
- 3/4" thick solid wood

Column Spindle Leg



- Solid hardwood
- Available in all styles except WVB, WVV and WVG

Matching Tall End Panels



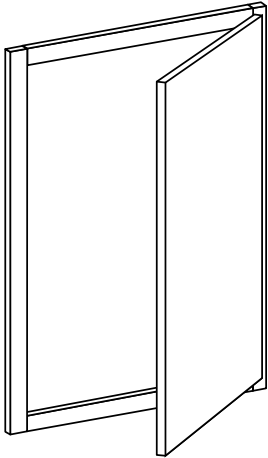
- 3/4" thick
- Field installation
- Will arrive as four separate panels for left or right side application & installs flush against cabinet side

**NOTE:** Cannot be used in conjunction with Custom Depth Cabinets  
**NOTE:** For WVV, WVG or WVB the matching panel will not be a flush application. Field adjustment to the side of the cabinet will be required

Wall Cabinets

Cabinet	Front	Qty
W0930	Door0930	1
W1230	Door1230	1
W1530	Door1530	1
W1830	Door1830	1
W2130	Door2130	1
W2430	Door1230	2
W2730	Door1330	2
W3030	Door1530	2
W3330	Door1630	2
W3630	Door1830	2
W0936	Door0936	1
W1236	Door1236	1
W1536	Door1536	1
W1836	Door1836	1
W2136	Door2136	1
W2436	Door1236	2
W2736	Door1336	2
W3036	Door1536	2
W3336	Door1636	2
W3636	Door1836	2
W0942	Door0942	1
W1242	Door1242	1
W1542	Door1542	1
W1842	Door1842	1
W2142	Door2142	1

Cabinet	Front	Qty
W2442	Door1242	2
W2742	Door1342	2
W3042	Door1542	2
W3342	Door1642	2
W3642	Door1842	2
W2412	Door1212	2
W2712	Door1312	2
W3012	Door1512	2
W3312	Door1612	2
W3612	Door1812	2
W2415	Door1215	2
W2715	Door1315	2
W3015	Door1515	2
W3315	Door1615	2
W3615	Door1815	2
W2418	Door1218	2
W2718	Door1318	2
W3018	Door1518	2
W3318	Door1618	2
W3618	Door1818	2
W2424	Door1224	2
W2724	Door1324	2
W3024	Door1524	2
W3324	Door1624	2
W3624	Door1824	2

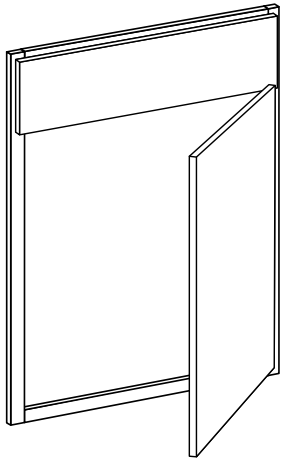


\*Frame is not included.

Door fronts come with pre drilled hinge holes. Hinges are not included.

Base Cabinets

Cabinet	Front	Qty
B12FH	Door1230	1
B15FH	Door1530	1
B18FH	Door1830	1
B21FH	Door2130	1
B24FH	Door1230	2
B27FH	Door1330	2
B30FH	Door1530	2
B33FH	Door1630	2
B36FH	Door1830	2
EZR33	Door0830	2
EZR36	Door1130	2



\*Frame is not included.

Door fronts come with pre drilled hinge holes. Hinges are not included.

Cabinet	Front	Qty	Front	Qty
B12	Door1221	1	DF128	1
B15	Door1521	1	DF158	1
B18	Door1821	1	DF188	1
B21	Door2121	1	DF218	1
B24	Door1221	2	DF248	1
B27	Door1321	2	DF278	1
B30	Door1521	2	DF308	1
B33	Door1621	2	DF168	2
B36	Door1821	2	DF188	2

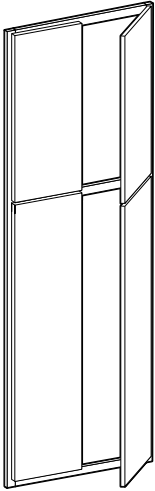
Cabinet	Front	Qty	Front	Qty
SB21	Door2121	1	DF218	1
SB24	Door1221	2	DF248	1
SB27	Door1321	2	DF278	1
SB30	Door1521	2	DF308	1
SB33	Door1621	2	DF168	2
SB36	Door1821	2	DF188	2
FSB36	Door1818	2		

Cabinet	Front	Qty	Front	Qty
BD12	DF128	1	DDF1210	2
BD15	DF158	1	DDF1510	2
BD18	DF188	1	DDF1810	2
BD21	DF218	1	DDF2110	2
BD24	DF248	1	DDF2410	2
BD27	DF278	1	DDF2710	2
BD30	DF308	1	DDF3010	2
BD36	DF188	2	DDF3610	2

Cabinet	Front	Qty
EZR33	Door0830	2
EZR36	Door1130	2

Tall Cabinets

Cabinet	Front	Qty	Front	Qty
U1884	Door1849	1	Door1830	1
U1890	Door1849	1	Door1836	1
U1896	Door1849	1	Door1842	1
U2484	Door1249	2	Door1230	2
U2490	Door1249	2	Door1236	2
U2496	Door1249	2	Door1242	2



\*Frame is not included.

Door fronts come with pre drilled hinge holes. Hinges are not included.

Cabinet	Front	Qty	Front	Qty	Front	Qty
OC3384	Door1618	2	DF338	1	DDF3310	2
OC3390	Door1624	2	DF338	1	DDF3310	2
OC3396	Door1630	2	DF338	1	DDF3310	2

Vanity Cabinets

Cabinet	Front	Qty
VB12	Door1221	1
VB15	Door1521	1
VB18	Door1821	1
VB21	Door2121	1
VB12FH	Door1230	1
VB15FH	Door1530	1
VB18FH	Door1830	1
VB21FH	Door2130	1

Cabinet	Front	Qty	Front	Qty
VBD12	DF128	1	DDF1210	2
VBD15	DF158	1	DDF1510	2
VBD18	DF188	1	DDF1810	2
VBD24	DF248	1	DDF2410	2
VBD30	DF308	1	DDF3010	2

Cabinet	Front	Qty	Front	Qty
VLC182184	Door1849	1	Door1830	1
VLC242184	Door1249	2	Door1230	2



# HOME DECORATORS COLLECTION

METROPOLITAN  
S E R I E S

*Newport Mythic Blue  
and Midtown High Gloss Metallic*

## FALL 2023 NEW PRODUCTS SPECIFICATION GUIDE

### SEMI-CUSTOM KITCHEN & BATH CABINETRY

**Have Questions? Need Design Help?**

 [HDCkitchens.com](https://www.HDCkitchens.com)  [HomerDesignTools.com](https://www.HomerDesignTools.com)  866-373-9131

Monday-Friday 9 A.M. to 8 P.M. EST | Saturday 9 A.M. to 6 P.M. EST

*September 2023*



Instant Kitchen Estimator



KCMA



CARB2 compliant



HDC-A\_W-SPECBOOK-ADD-0923