

USE AND MAINTENANCE

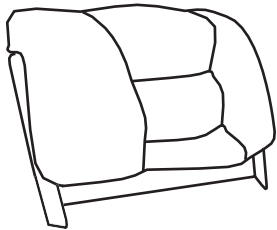
Use on level surfaces only

Because this product needs assembly, it is prone to working itself loose from time to time depending on the use. Please take the time to check that all connections are still tight and working properly

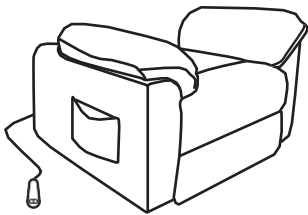
Only clean using a damp cloth and mild detergent, do not use bleach or abrasive cleaners.

Lift & Recline Chair

PART LIST

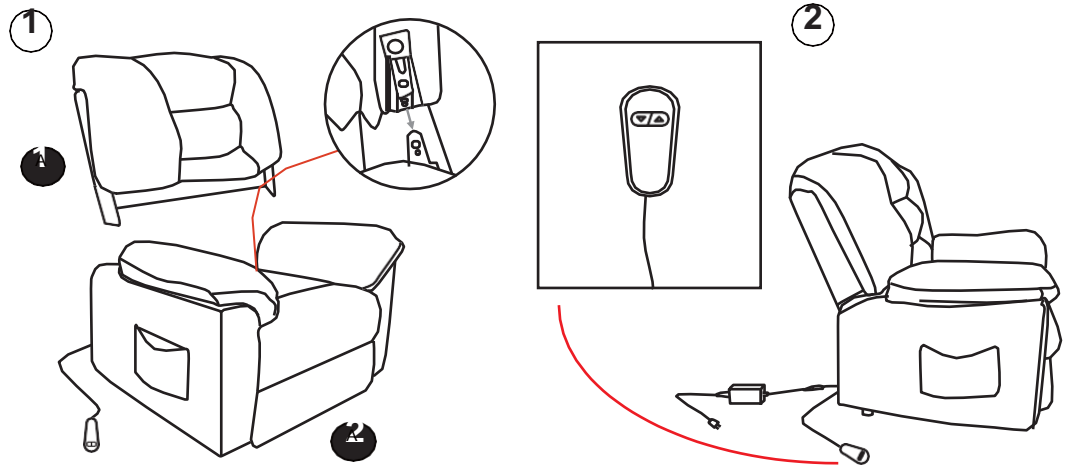


1 - Backrest x1

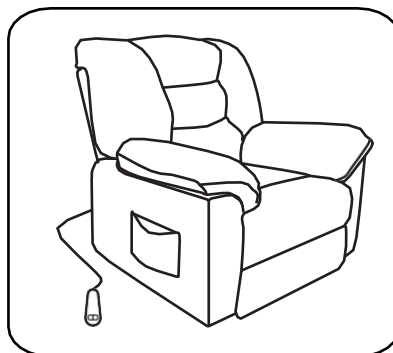
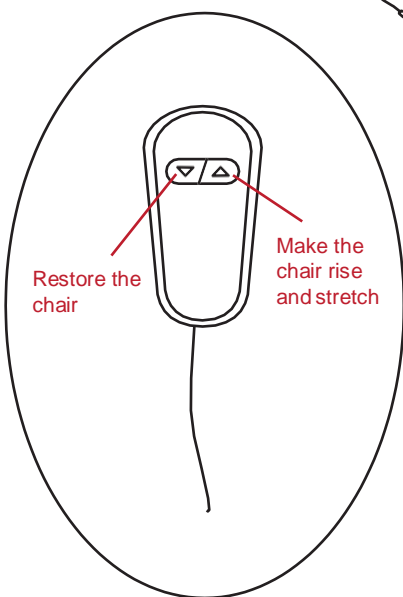
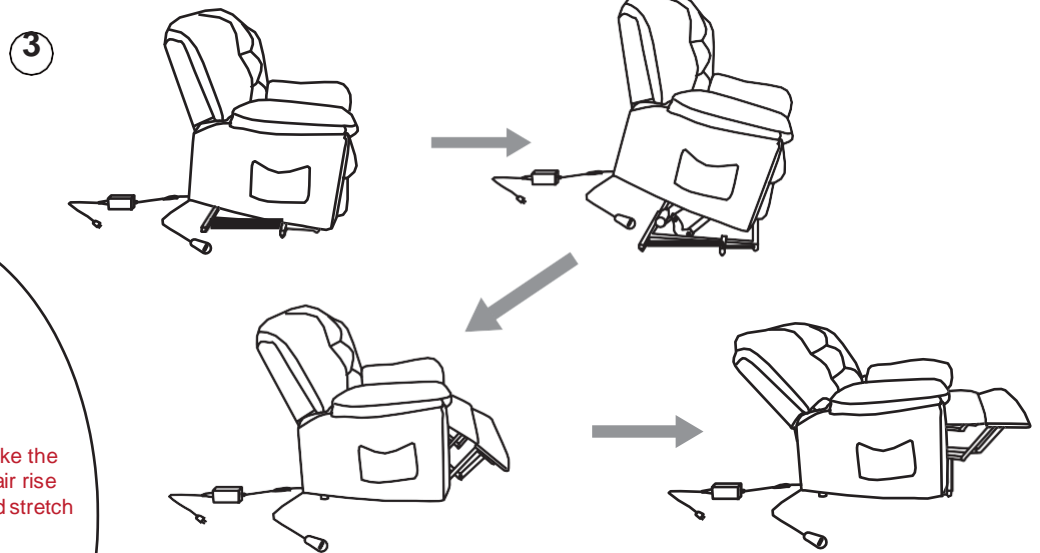


2 - Chair Base x1

Assembly Instructions



1. Insert the 1 into the 2.



Congratulations! Setup of your new Lift & Recline Chair is Complete!