

# Cordless Celestial Shades

We hope you enjoy your new purchase!  
 If you have any questions regarding this product or the instructions  
 Please call Achim's Family of Home Furnishings  
 Customer Service at 1-800-54-ACHIM  
 Visit our website at [www.achimonline.com](http://www.achimonline.com)  
 Made in China  
 V-30



## LAYERED SHADE

Thank you for purchasing our product. We want to reassure you that our main design focus with window blinds/shades is child safety, and we guarantee this with your new, Cordless Sheer Celestial Shades. In addition, we hope that you enjoy its ease of use and installation. We look forward to your continued patronage in the future.

## SAFETY INFORMATION

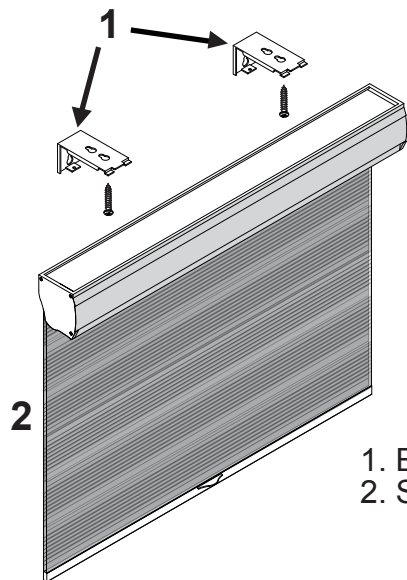
- Read all instructions, warning tags, and labels provided with your product to avoid injury. Keep this manual.
- The Sheer Celestial is cordless and 100% child-safe.

## INSTALLATION INSTRUCTIONS

### Step 1: Check Package Contents

Before installing your shade, make sure all parts listed below are present. If any part is missing or damaged, please do not assemble, install, or operate.

Contents include:



1. Brackets (2) and screws (4)
2. Shade

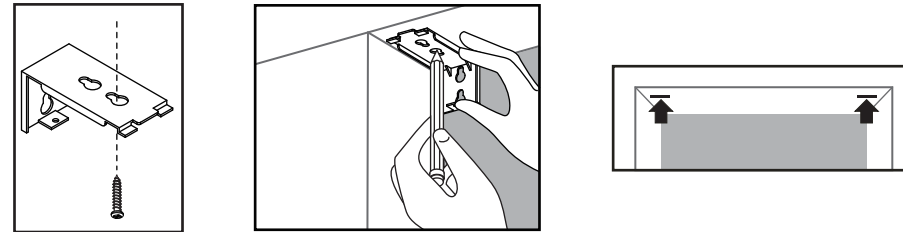
### Step 2: Gather Additional Tools Required

The following tools are not included, but will be needed to complete your installation.

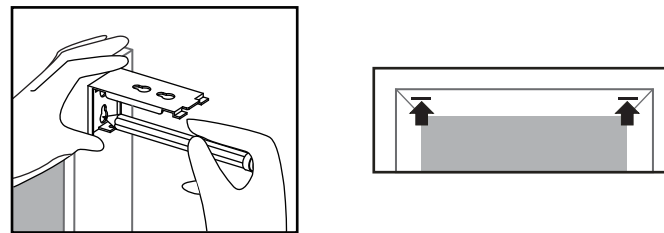
- Drill with 1/16-inch bit
- Screwdriver
- Level
- Pencil
- Step ladder

### Step 3: Begin Installation

- Mark location of shade and brackets.



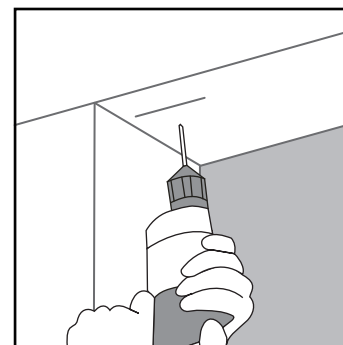
Inside Mount



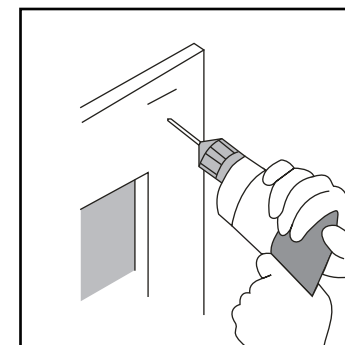
Outside Mount

- Note that the shade may be installed either inside or outside the window frame.
- Tip: Make sure mounting brackets and/or mounting surface are level, otherwise your shade could telescope during the lifting operation.

### Step 4: Drill Holes

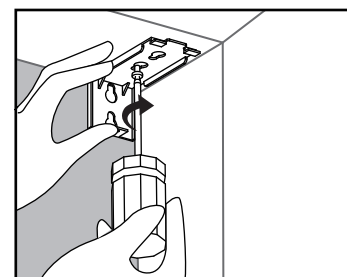


Inside Mount

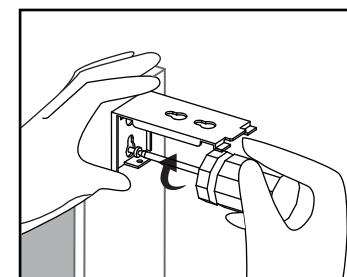


Outside Mount

### Step 5: Screw in Brackets

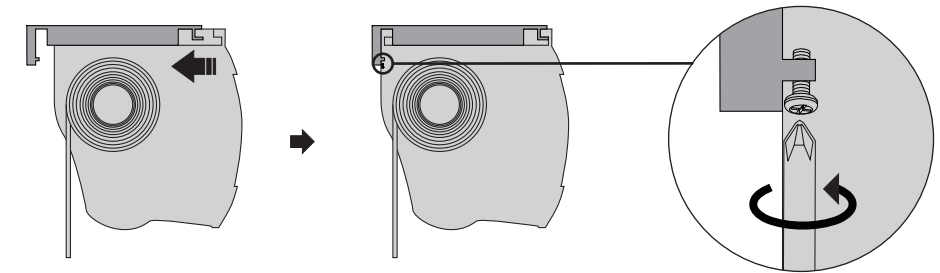


Inside Mount



Outside Mount

### Step 6. Mount Shade in Brackets



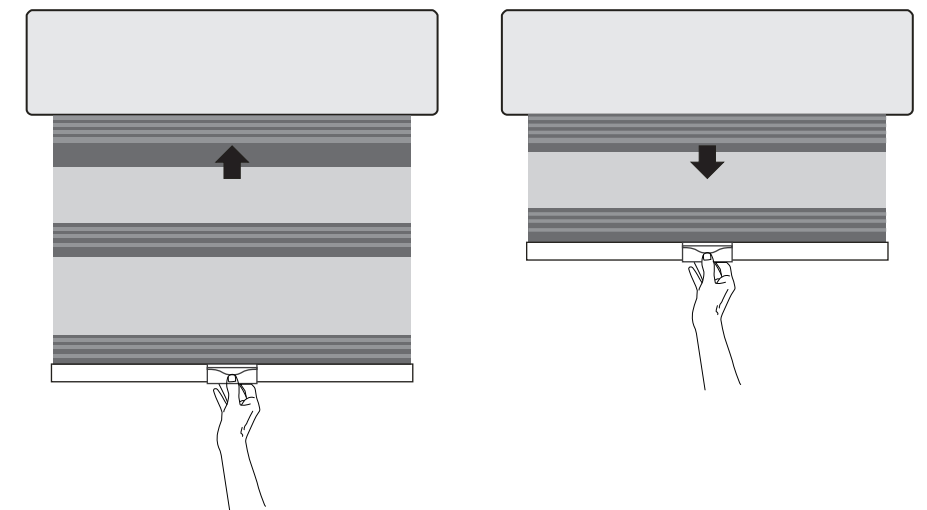
Side View

Hang back of headrail channel onto the back of the clip.

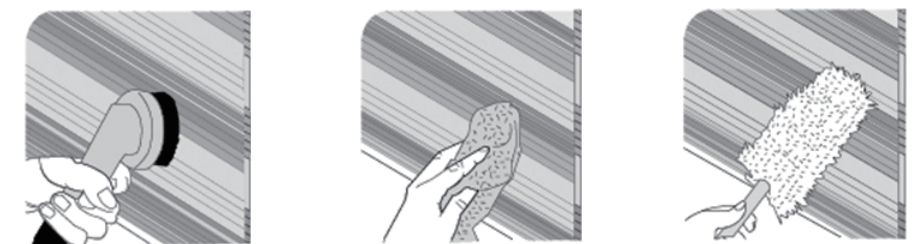
- Rotate headrail forward and up.
- Clips will click when secure.

### Step 7. Operate the Shade

Standard lift



## CLEANING INSTRUCTIONS



Lightly vacuum with a soft brush attachment or wipe with a duster.

## QUESTIONS?

Contact customer service at 1-800-54-ACHIM  
 Visit our website at [www.achimonline.com](http://www.achimonline.com)