



Installation Instructions
Wood-SPC Engineered Flooring Plank
For Assistance, Call: 1-800-956-8538
www.HomeDepot.com

Product Description
7 mm T x 5.2 in. W x 36.22 in. L
Waterproof Engineered Click Bamboo Flooring
(15.45 sq. ft./case)

MFG Model #
2019-VSPC-MB16 / YYVS2003 / 2019-VSPC-DB13
2019-VSPC-DB06 / YY-VSPC-18M22 / YYVS2002 / YYVS2001
YY-VSPC-MB14 / YY-VSPC-GR10 / YYVSPC-GC18
YY-VSPC-DG02 / YYVSPC-FY08

Grade Levels
Above Grade / On Grade
Below Grade

Installation Method
Floating

GENERAL INSTALLATION TOOLS

- | | | | |
|---|--|--|--|
| <input type="checkbox"/> Moisture Meter | <input type="checkbox"/> Chalk Line | <input type="checkbox"/> Tapping block | <input type="checkbox"/> Hammer or Rubber Mallet |
| <input type="checkbox"/> Tape Measure | <input type="checkbox"/> Hand Saw or Power Saw | <input type="checkbox"/> Crow Bar or Pry Bar | <input type="checkbox"/> 100% silicon & PE Foam Backer Rod |
| <input type="checkbox"/> Pencil | <input type="checkbox"/> Utility Knife | <input type="checkbox"/> Wood or Plastic Spacers (¼ in.) | |

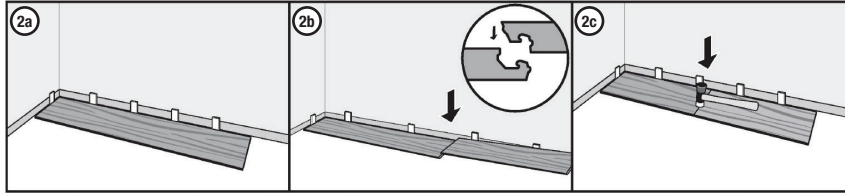
FLOATING INSTALLATION INSTRUCTIONS

NOTE: Please refer to www.homedepot.com for latest updates

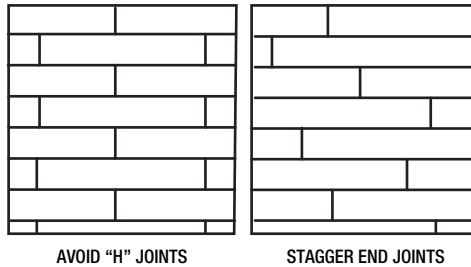
STEP ONE - ESTABLISH A STARTING POINT

- 1.1. Remove any existing wall base, shoe molding, quarter round or doorway threshold.
- 1.2. Prior to installing flooring, roll out 6mil poly-film with seams overlapped 8 in. Fasten seams every 18 in. -24 in. with duct tape or poly tape. Run the outside edges of film up the perimeter of wall 4 in. (trim after flooring installation is complete).
- 1.2.1. If installation is above grade, poly-film is recommended but not necessary.
- 1.3. Determine the longest, straightest wall to begin installation; this is usually an exterior wall.
- 1.4. Measure the total width of the flooring (including the tongue), plus ¼ in. for expansion. Measure out this distance in at least 2 places from the starting wall and 12 in. from the corners. Then, snap a chalk line parallel to the starting wall.

STEP TWO - LAY OUT



- 2.1. Choose the longest and straightest boards and align the plank's tongue with the working line. Cut the last plank to the proper length leaving a ¼ in. from the end wall. Repeat this step for the second row, making sure to stagger the joints. The minimum end stagger is 6 inches.



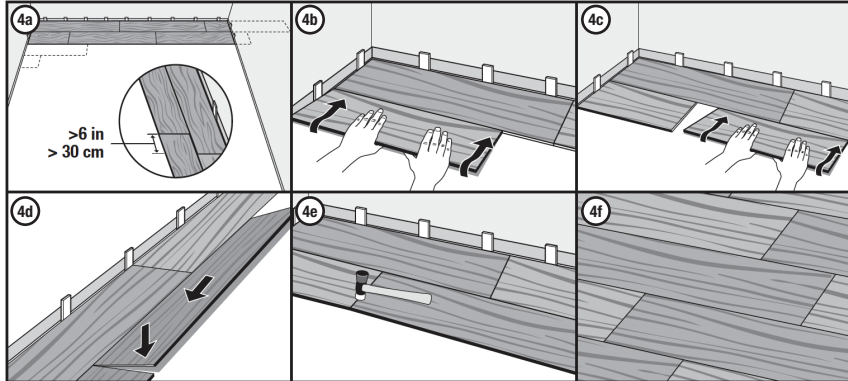
AVOID "H" JOINTS

STAGGER END JOINTS

STEP THREE - RACK THE FLOOR

- 3.1. Once the first row is in place, continue to lay out the planks. Remain working from at least four open cartons. Be sure to blend the planks and stagger the end joints a minimum of 6 in. apart to ensure a favorable appearance.

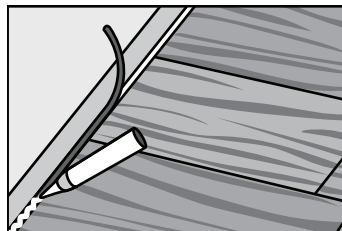
STEP FOUR - INSTALLATION OF FLOORING



- 4.1. Once enough of the planks have been racked out, begin installing the planks by fitting the short side of the click system into the long side of the click system. Make sure that the click system is engaged evenly, any gapping can compromise the integrity of the installation. To ensure a tight fit, use a tapping block and rubber mallet on the long seams and tap down on the top of the plank at the short seams. Continue installing planks across the room ending at the far wall.
- 4.2. It may be necessary to rip the last row to allow for the ¼ in. expansion. If the last row is 2 in. or less click the pieces to the last full uninstalled row and install them together. If needed, use a light rubber mallet to make the remaining rows tight to the installed planks.

STEP FIVE - SEALING THE PERIMETER

- 5.1. Once install is complete, use 100% silicone sealant around the perimeter of the installed flooring. Fill the expansion gap with compressable PE foam backer rod and cover with 100% silicone sealant.



STEP SIX - COMPLETING THE JOB

- 5.1. Clean the floor with a prefinished hardwood cleaner such as; Bona®, Woodwise® or Glitsa®.
- 5.2. Install transition pieces -i.e. - stair nose, reducer, end cap, t-molding and base shoe. Please follow manufacturer's installation guidelines for transitions.
- 5.3. Inspect final floor for nicks and or minor gaps - fill with appropriate color wood putty/filler.
- 5.4. Any unused material should be stored in a dry place in case future repairs are needed. We recommend saving at least 2 boxes.



Installation Instructions
Wood-SPC Engineered Flooring Plank
For Assistance, Call: 1-800-956-8538
www.HomeDepot.com

Product Description
7 mm T x 5.2 in. W x 36.22 in. L
Waterproof Engineered Click Bamboo Flooring
(15.45 sq. ft./case)

MFG Model #
2019-VSPC-MB16 / YYS2003 / 2019-VSPC-DB13
2019-VSPC-DB06 / YY-VSPC-18M22 / YYS2002 / YYS2001
YY-VSPC-MB14 / YY-VSPC-GR10 / YYS2002 / YYS2001
YY-VSPC-DG02 / YYS2002 / YYS2001

Grade Levels
Above Grade / On Grade
Below Grade

Installation Method
Floating

CARE AND MAINTENANCE

WITH TODAY'S ADVANCES IN FLOORING STAINS AND FINISHES, CLEANING WOOD HAS NEVER BEEN EASIER. THERE ARE OTHER STEPS YOU CAN TAKE TO MINIMIZE MAINTENANCE AND MAINTAIN THE BEAUTY OF YOUR WSPC FLOORS. REGULAR MAINTENANCE REQUIRES LITTLE MORE THAN SWEEPING WITH A SOFT BRISTLE BROOM IF YOUR FLOOR INCLUDES A BEVELED EDGE THAT COULD COLLECT DEBRIS.

- Clean your floors periodically with a professional wood floor cleanser. Lifeproof™ recommends a prefinished hardwood cleaner, such as Bona®.
 - For moderately soiled areas, use a mild solution of isopropyl (rubbing) alcohol and distilled water. Dilute the mixture by mixing one-part alcohol and 2 parts distilled water. For tougher spots, use a higher concentration of isopropyl alcohol and distilled water.
- Avoid using any cleaning agents containing wax, oil or polish. Left over residue will form a dull film.
- Always spot test in an inconspicuous area.
- Do not use any vinyl care floor cleaning products on wood floors.
- Do not use vinegar as a cleaning solution; its acidic properties will harm the finish.
- Use throw rugs both inside and outside doorways to help prevent grit, dirt and other debris from being tracked onto your floor. For wood flooring in the kitchen, place an area rug in front of the kitchen sink.
- Do not wet-mop the floor. Standing water can dull the finish, damage the floor and leave a discoloring residue.
- Do not use a steam mop of any kind. Damages associated with steam mop use will void warranty coverage.
- Wipe up spills immediately.
 - Caustic or abrasive products may cause harm to the finish and are will not be covered under the products warranty coverage.
- Do not wax your floor unless it was originally wax finished
- Protect your floor with floor protectors that are at least 1 in. in diameter made of non-staining felt, such as Safeglides® from Glitsa® under the legs of furniture to help prevent scuffing and scratching; Larger pads may be required on bigger objects.
- Avoid walking on your wood floors with cleats, sports shoes and high heels.
 - A 125-pound woman walking in high heels has an impact of 2,000 pounds per square inch. An exposed heel nail can exert up to 8,000 pounds per square inch. This kind of impact can dent any floor surface.
- When moving heavy furniture, do not slide it on the flooring. It is best to pick up the furniture completely to protect the floor from damage.
- Use a humidifier throughout the winter months (or dehumidifier in the summer months) to keep the floor's movement and shrinkage to a minimum.

FLOOR REPAIRS

- Very light and small surface scratches can be repaired with a staining "touch up" pen of the appropriate color.
- Slightly deeper scratches can be repaired by means of colored putty, and/or stains. Fill the scratches with the putty, level with putty knife and use terry cloth towel to wipe off excess.
- Very deep scratches may require the replacement of planks.