

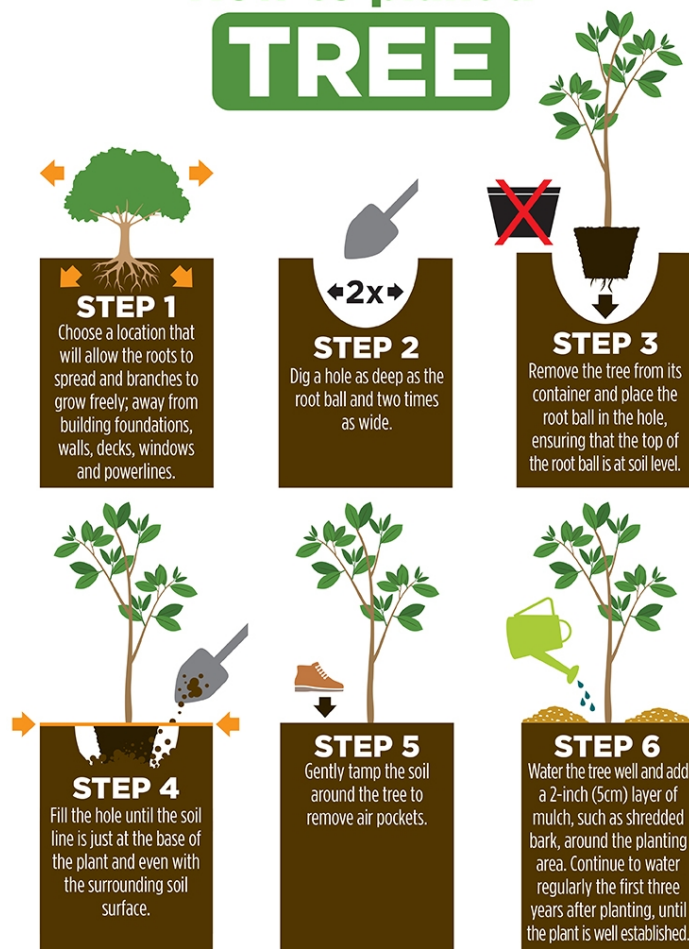
# USE & CARE MANUAL

## CYPRESS LEYLAND

(*Cupressocyparis leylandii*)

### PLANTING GUIDE:

## How to plant a **TREE**



STEP 1) First, decide on a planting location. Consider carefully what kind of sun, soil, and growing-space your tree or shrub will need.

STEP 2) Once you've located the perfect spot, the hole you are digging must be at least double the width and as deep as the root system you are planting.

STEP 3) The top of the root system should be level with the ground. Before placing the tree or shrub in the hole, use your hands to gently break up the root system.

STEP 4) Once the tree is in place, backfill the hole with native soil and any leftover potting material.

STEP 5) Pack down the soil to eliminate any air pockets.

STEP 6) When finished, water thoroughly.

(continued below)

## **PLANTING CARE:**

Leyland Cypress trees tend to be low maintenance trees. For the first six weeks you will need to water them 2-3 times a week. After this, time the tree will become established and you will only need to water as needed. Prune in mid-summer to maintain its shape.