

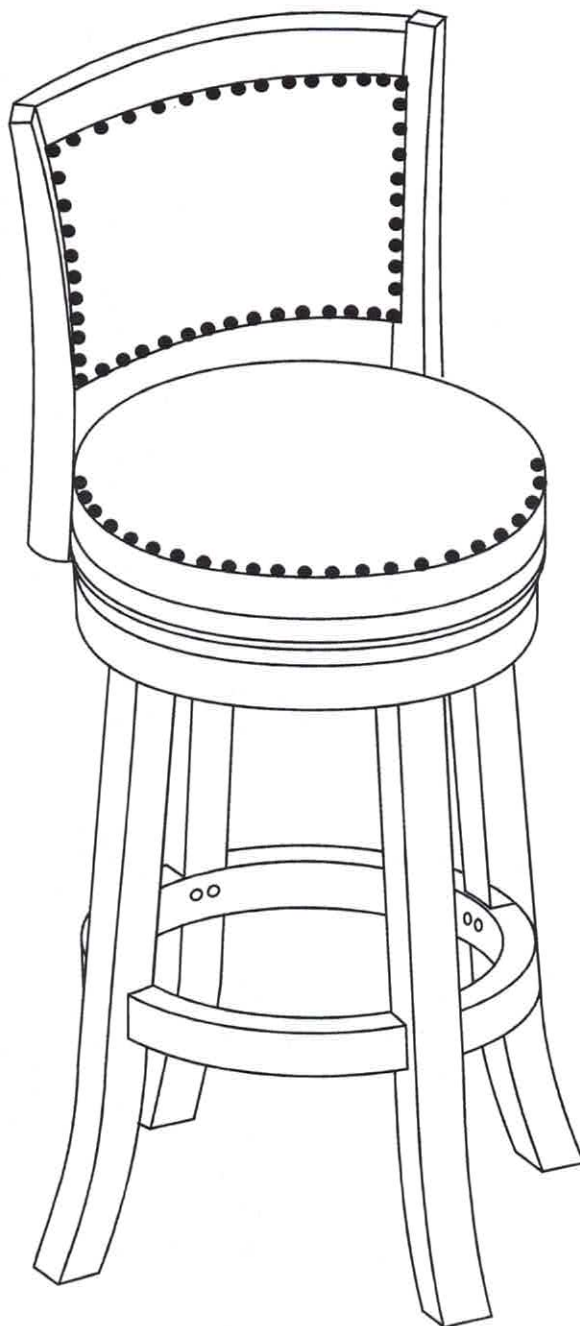
42929, 42424, 42429, 42524, 42529, 42824, 42829, 42924

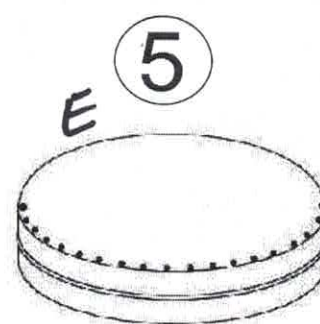
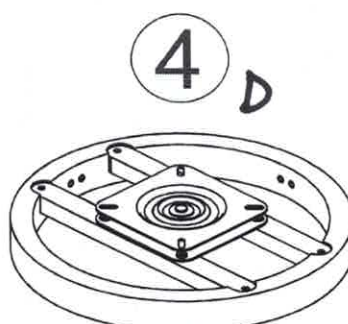
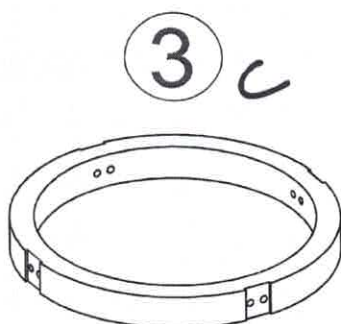
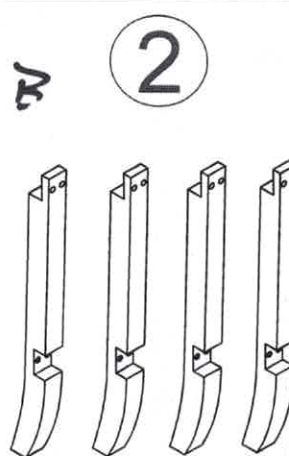
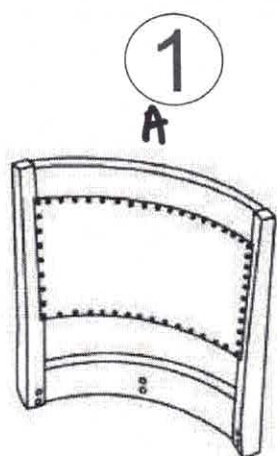
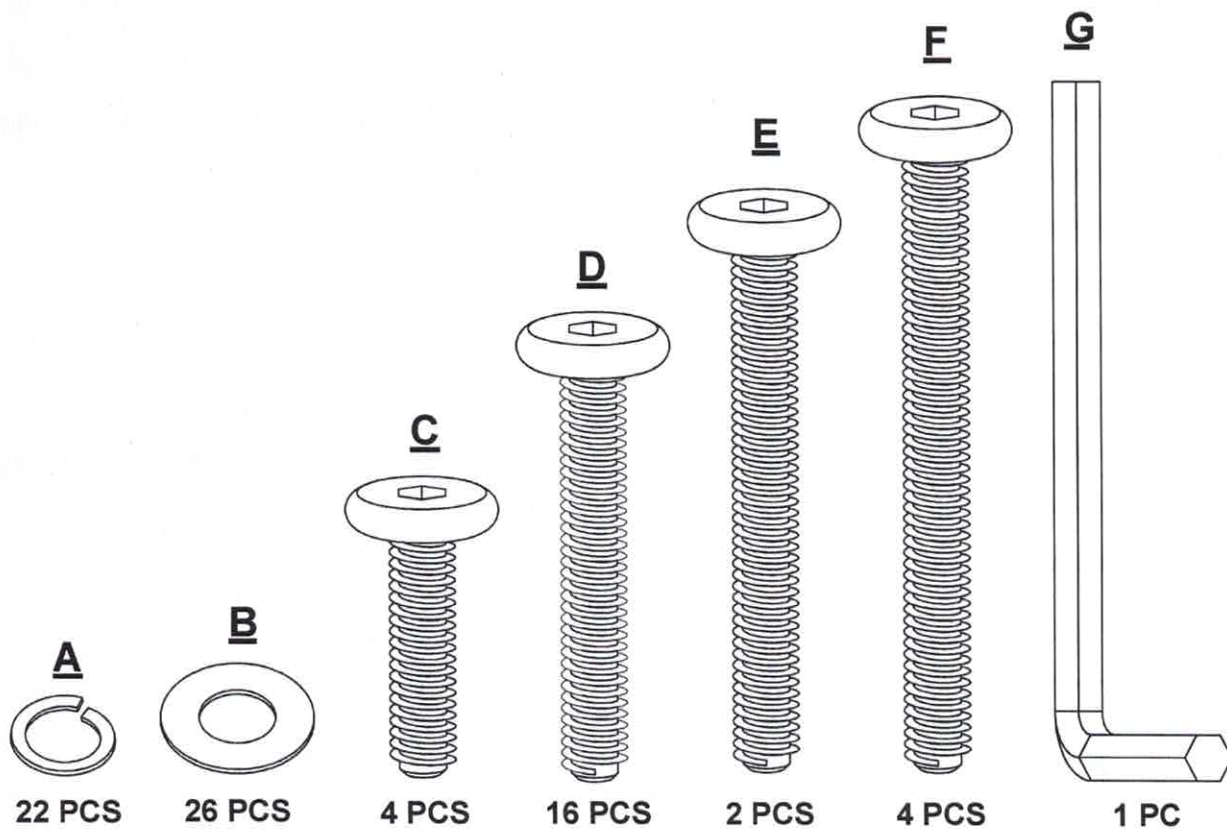


Boraam Industries

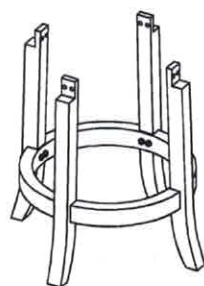
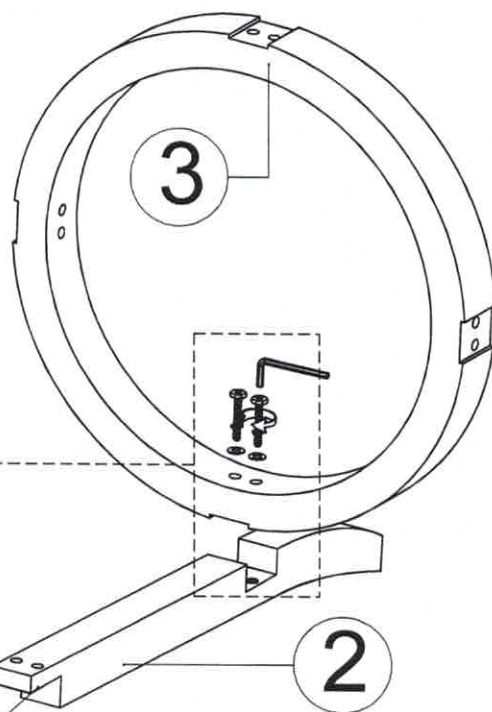
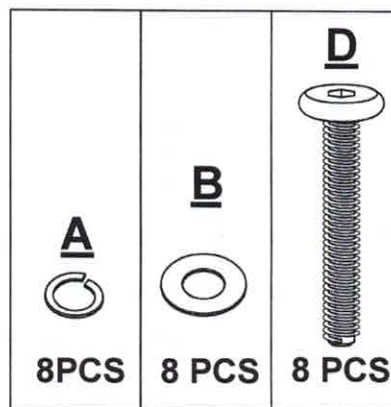
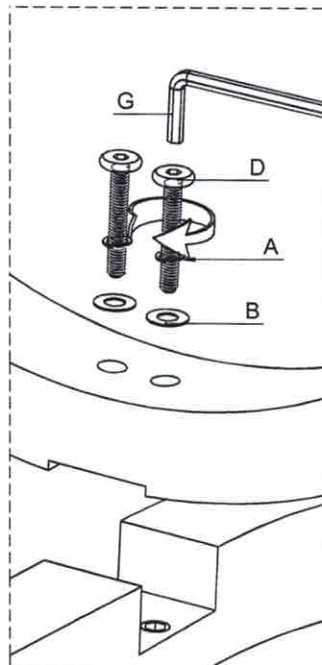
BRISTOL SWIVEL STOOL

ASSEMBLY INSTRUCTIONS



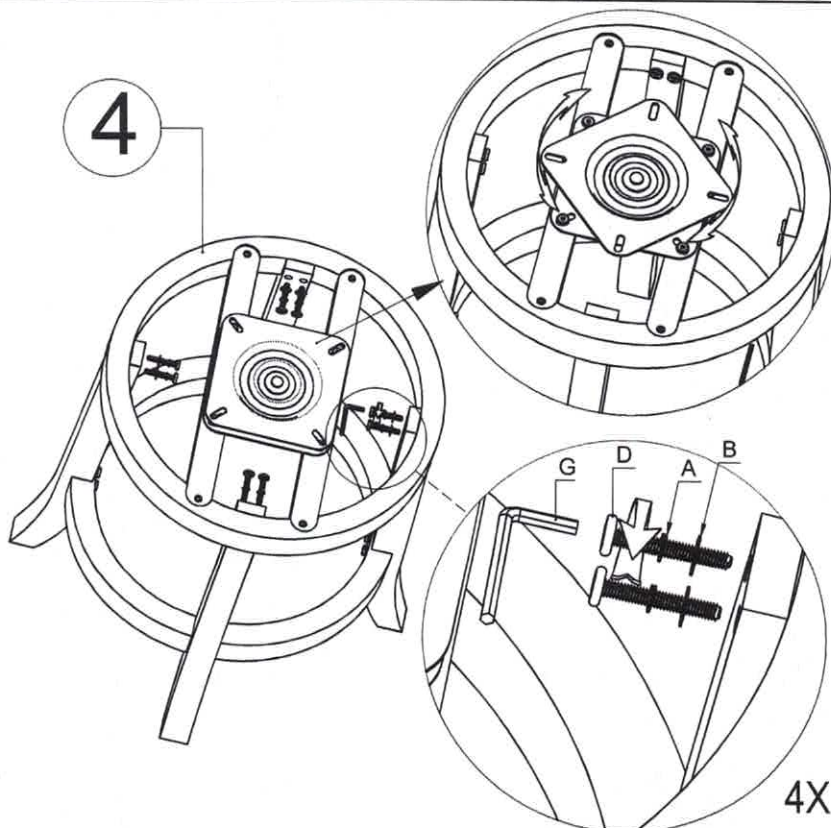
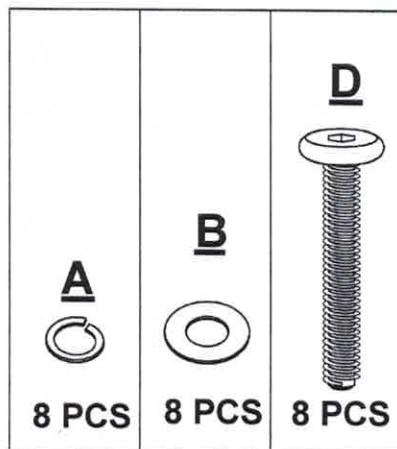


01



DO NOT TIGHTEN BOLT COMPLETELY.





02

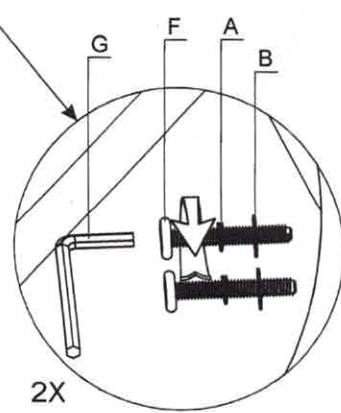
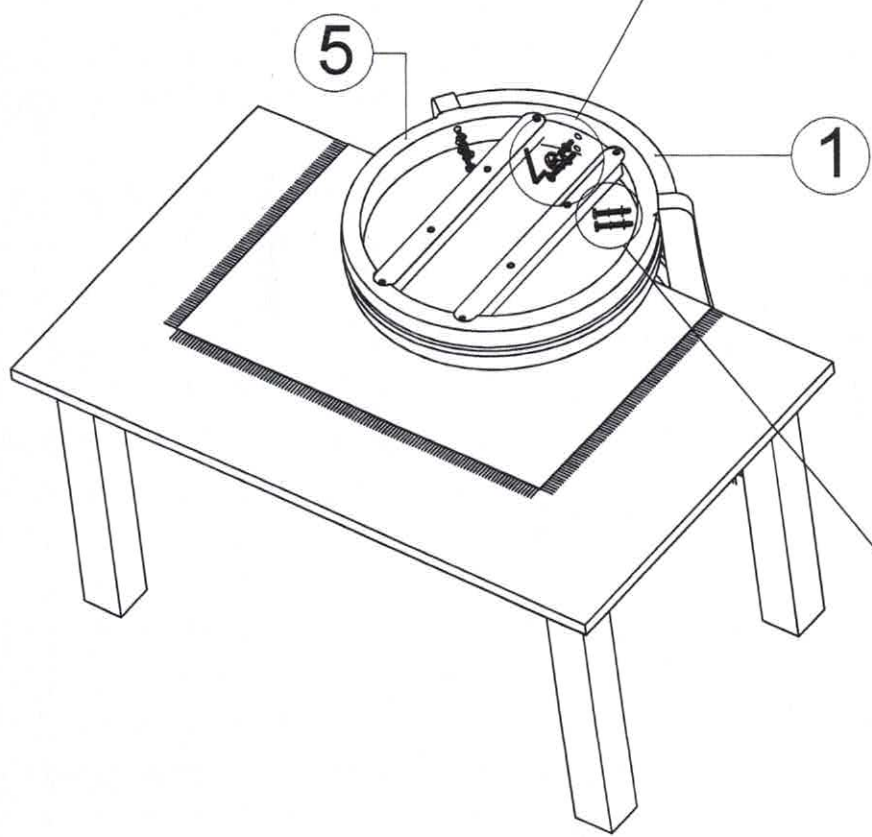
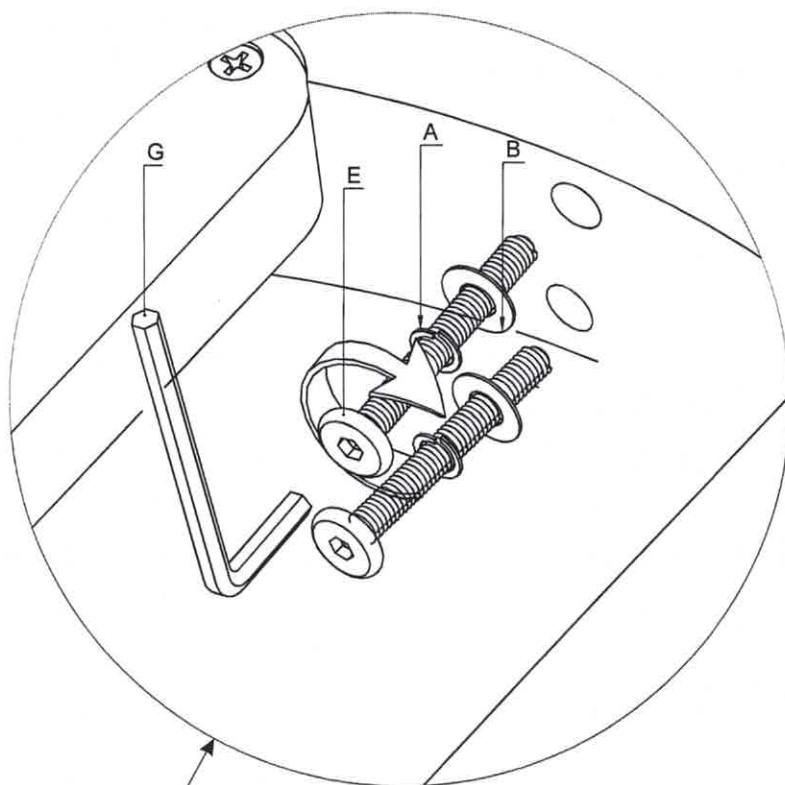


TIGHTEN BOLT COMPLETELY.

4X

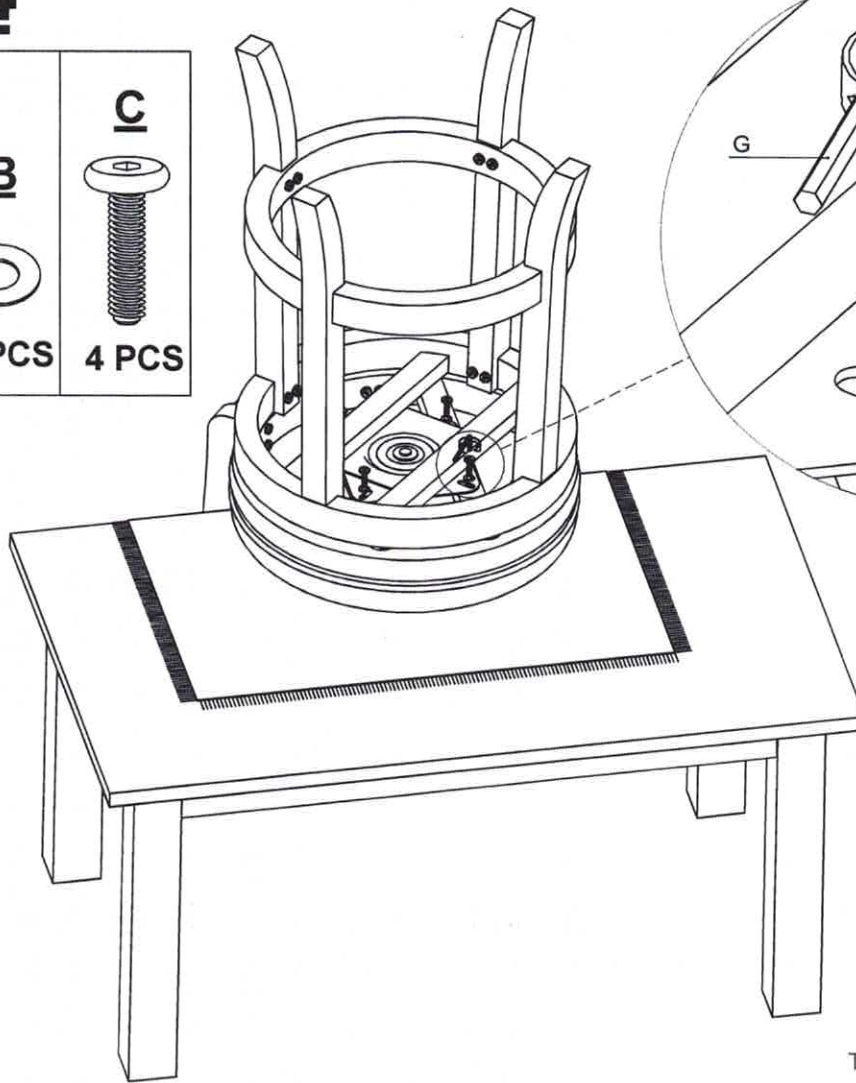
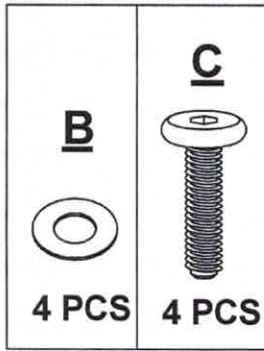
03

A	B	E	E
			
6 PCS	6 PCS	2 PCS	4 PCS

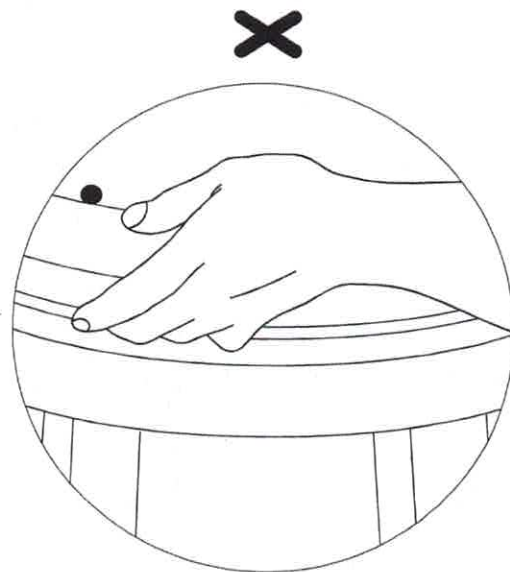
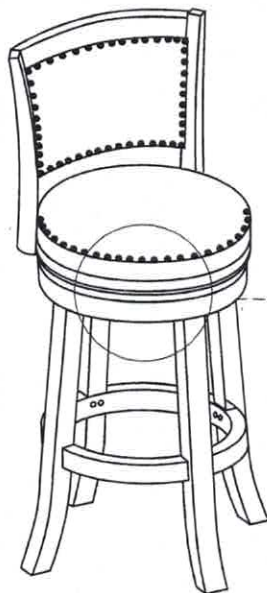


TIGHTEN BOLT COMPLETELY.

04



TIGHTEN BOLT COMPLETELY.



BE SURE TO CHECK ALL BOLTS ARE SECURELY
TIGHTENED PRIOR USING THIS STOOL.