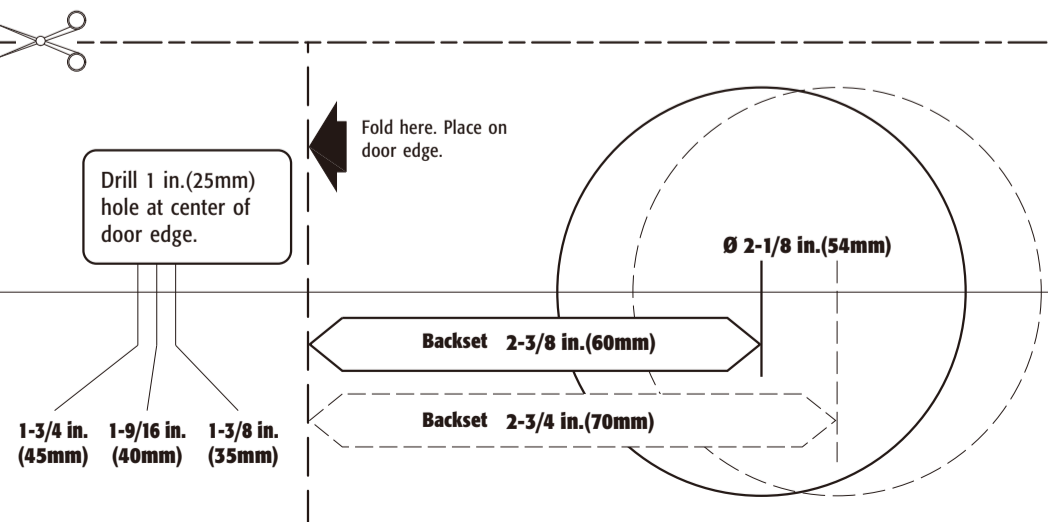
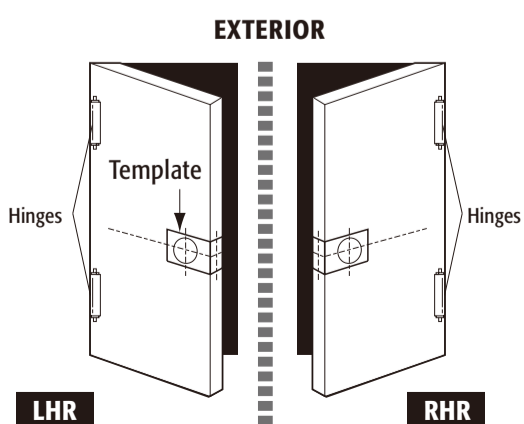
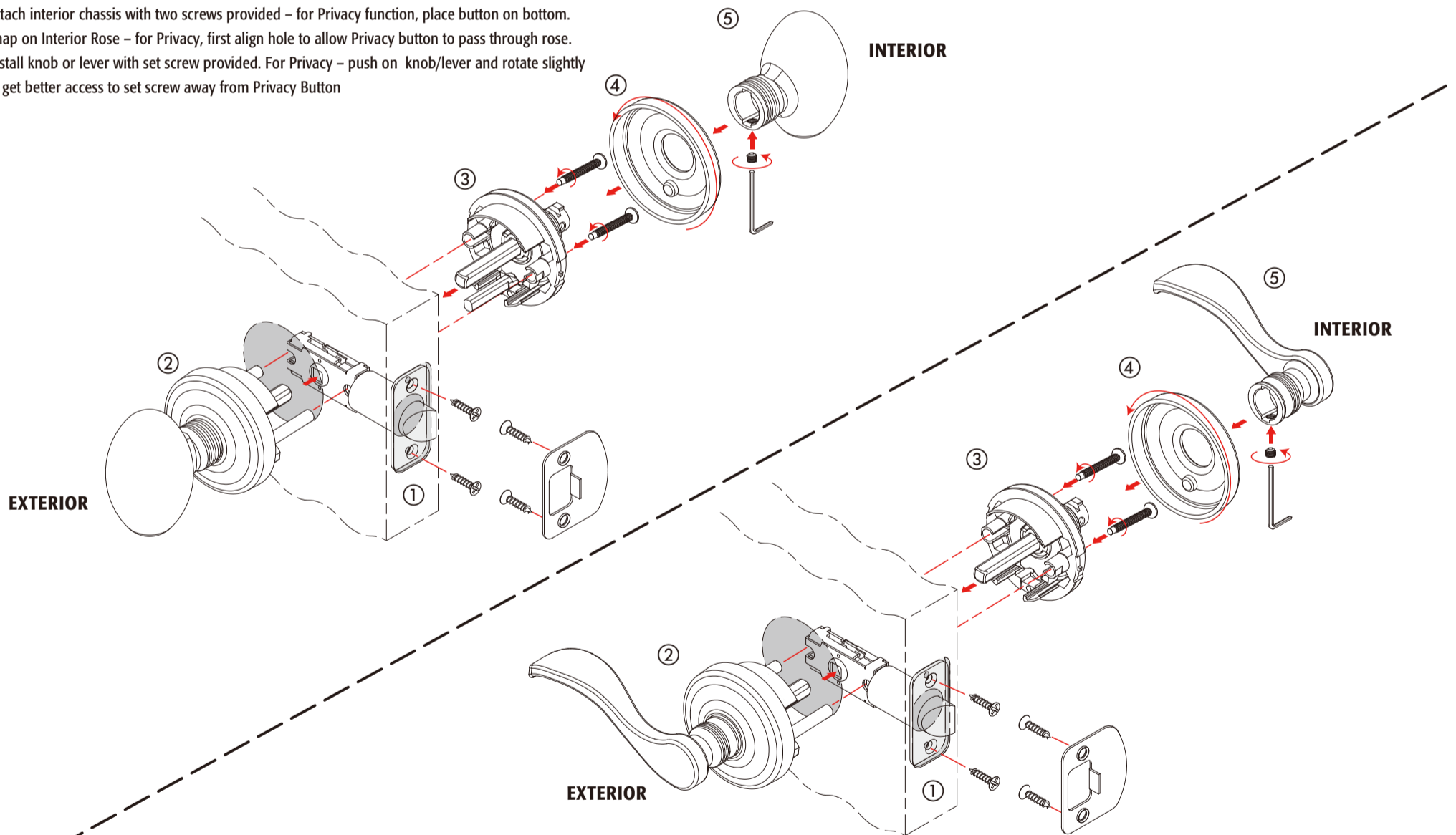


Passage and Privacy Installation

- ① Install latch into door, first adjusting for appropriate backset.
- ② Insert assembled Exterior half into door and through latch.
- ③ Attach interior chassis with two screws provided – for Privacy function, place button on bottom.
- ④ Snap on Interior Rose – for Privacy, first align hole to allow Privacy button to pass through rose.
- ⑤ Install knob or lever with set screw provided. For Privacy – push on knob/lever and rotate slightly to get better access to set screw away from Privacy Button.



CARE AND MAINTENANCE

- THE FOLLOWING CARE INSTRUCTIONS SHOULD BE FOLLOWED TO ENSURE A LONG LASTING FINISH:
1. Remove locks, or do not install locks, prior to painting your door.
 2. Periodically clean with mild soap and a soft cloth only. Do not use abrasives or harsh chemicals, and avoid sharp or scratching objects.