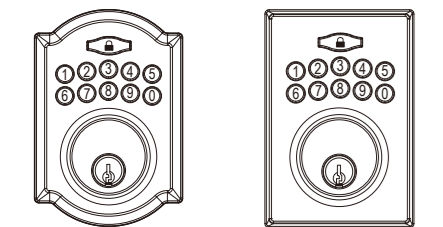


DEFIANT®

INSTALLATION GUIDE



FOR QUICK & EASY ASSEMBLY
FIND 3D INSTRUCTIONS
FOR THIS PRODUCT IN



WARRANTY

LIMITED LIFETIME MECHANICAL AND 1 YEAR ELECTRONIC WARRANTY

The retailer of this product, hereby warrants, subject to the conditions set forth below, that it will either repair or replace, at its option, this product if it proves to be defective by reason of improper workmanship or materials within the original purchaser's limited time. In order to obtain repairs or replacement under this limited warranty you must bring this product to the retailer's store in which you bought it.
Original purchaser: This limited warranty is limited to the original purchaser at retail of this product from retailer. Except to the extent prohibited by applicable law, no other warranties, whether express or implied, including the warranties of merchantability and fitness for a particular purpose, shall apply to this product. Under no circumstances shall retailer be liable for consequential or incidental damages in connection with this product. To the extent retailer is prohibited by applicable law from excluding implied warranties, the duration of such implied warranties which are not excludable shall be the original purchaser's lifetime. Some states do not allow the limitation on how long an implied warranty lasts, so the above limitation on the duration of implied warranties which are not excludable, if any, may not apply to you. Some states do not allow the exclusion or limitation of incidental or consequential damages, so the above limitation or exclusion of incidental or consequential damages may not apply to you. Retailer neither assumes nor authorizes any representative or other person to assume for it any obligation or liability other than such as is expressly set forth herein. This limited warranty gives you specific legal rights, and you may also have other rights which vary from state to state.



Contents in this package are **NOT** interchangeable with other units.
Please contact customer service for more information.

Questions, problems, missing parts?
Before returning to the store, call Defiant Customer Service
TOLL FREE HELP LINE 1-877-663-5625
HOMEDEPOT.COM
08:30 a.m.-05:30 p.m., EST, Monday - Friday

G32-KPDA712A-XQ
Rev. 20/06-00

IMPORTANT NOTICE

Please Read This Notice before Installing, Using, and Servicing the Product
The product is designed and manufactured for providing security. Please read carefully and follow the instructions given below. Lack of proper working knowledge or improper use could cause unexpected damage or loss to personal or commercial belongings.

Installation

- Please contact your local service provider prior to the installation as your door preparation may be different from the standard the product conforms to.
- Please perform the bolt direction determination **immediately after** the product is successfully mounted to the door. You may refer to **Page 10** for more details.
- Please change the master code (programming code) to prevent unauthorized individuals from gaining access.
- Any removal or replacement of parts in installation is NOT recommended and may invalidate the warranty of the product.
- Not to be used on an Emergency Exit.

Product Use

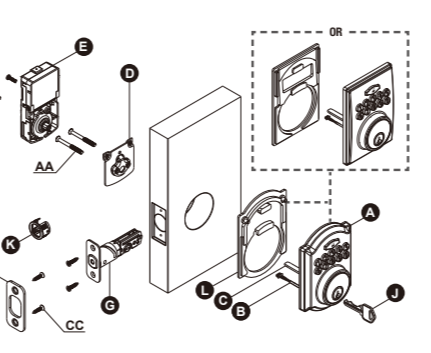
- **ALWAYS use authentic alkaline batteries.** It is the user's responsibility for damage caused by using unauthentic batteries.
- The product is made of mechanical and electronic components, which may be sensitive towards water, physical impact, and electric shock. Using the product with care prevents unexpected malfunction and optimizes the product life span.
- **DO NOT** disassemble the product without advice from qualified service provider. Unauthorized disassembly will void the product warranty.
- Please refer to TROUBLESHOOTING page if any problem occurs, or contact your local service provider for professional instructions.
- Remove all batteries from the lock at the same time and replace them with new batteries of the same size and type.
- Preserve battery and lock life by removing the batteries when the lock is not being used for more than 3 months.

Service and Maintenance

- **ALWAYS** refer to user's manual or seek advice from your local service provider on cleaning, moving, or maintaining the product.
- The information in this notice is subject to change without notice.

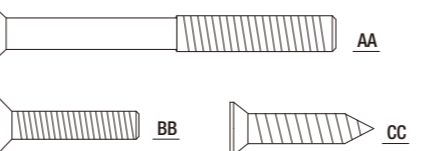
Package Contents List

Part	Description	Quantity
A	Exterior Assembly	1
B	Power Cable	1
C	Torque blade	1
D	Mounting Plate	1
E	Interior Assembly	1
F	Battery Cover	1
G	Latch	1
H	Strike Plate	1
I	Dust Box	1
J	Key	2
K	Drive-in Collar (Optional)	1
L	Exterior Gasket	1



Hardware Contents (Actual Size)

Part	Description	Quantity
AA	1-13/16" (46 mm) Mounting Bolt	2
BB	13/16" (20 mm) Screw	2
CC	3/4" (19 mm) Wood Screw	4



01

Safety Information

NOTE:
Before beginning installation of product, make sure all parts are present. If any part is missing or damaged, do not attempt to assemble, install or operate the product. Call the Customer Service Team or visit www.homedepot.com.

Do not use electric drill or electric screwdriver to tighten screws.



Read the precautions and instructions in this manual before installing and using this lock. Save this manual for future reference.

A. Do not attempt to disassemble any internal components of the lockset. Doing so will void the limited warranty.
B. Do not drop or hit the lockset. Too much shock may result in permanent damage.
C. Do not use pins or sharp objects to press the keypad.
D. Always create a backup of information you wish to keep (Master Code, User Codes, etc.)
E. Promptly change the Master Code before operating this lockset.
F. Restrict access to your lock's interior assembly and routinely check your settings to ensure they have not been altered without your knowledge.

CARE and MAINTENANCE:
The following instructions should be followed to properly protect and maintain your lockset:

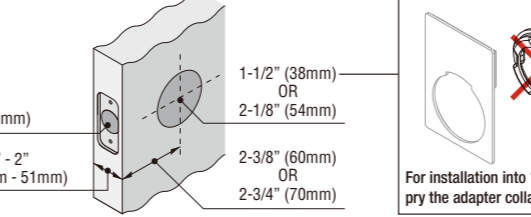
- A. Remove locks, or do not install locks, prior to painting your door.
- B. Periodically clean with mild soap and a soft cloth only.
- C. Do not use any abrasives or chemical products containing alcohol, benzene, acids, and avoid using sharp or abrasive objects to clean this lockset.
- D. Do not allow any water or liquids into the lockset during installation.

WARNING:
If the door needs to be drilled, please be familiar with how to use a drill safely and understand all of the door preparation steps before proceeding.

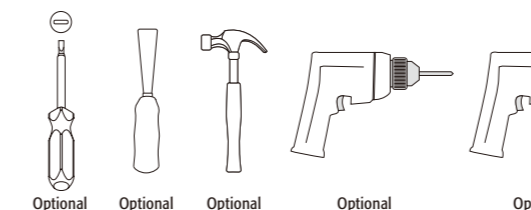
02

Before Proceeding

Check Dimensions



Tools Required



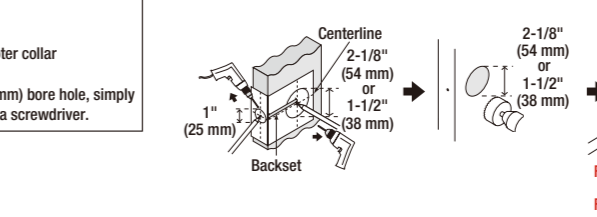
WARNING:
If the door needs to be drilled, please be familiar with how to use a drill safely and understand all of the door preparation steps before proceeding.

03

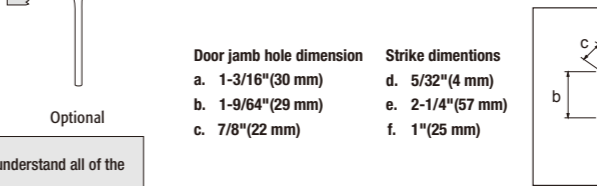
Step 1: Door Drilling For New Installation

1 Cut out TEMPLATE and use to mark the door, drill holes, and chisel out the mortise.

NOTE:
If your door already has holes, skip to **Step 2**



2 Prepare the door jamb – use the strike plate as a template to drill the latch and screw holes and chisel out the mortise. The strike plate must fit flush with the surface of the door jamb.

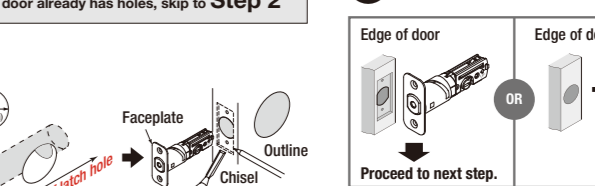


Proceed to next step.

04

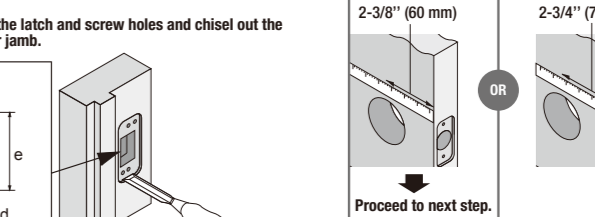
Step 2: Install the latch and strike

1 Choose faceplate



2 Set the latch backset

Your latch is set for 2-3/8" backset. It can be adjusted if needed to 2-3/4" (skip this if your door has a 2-3/8" backset).

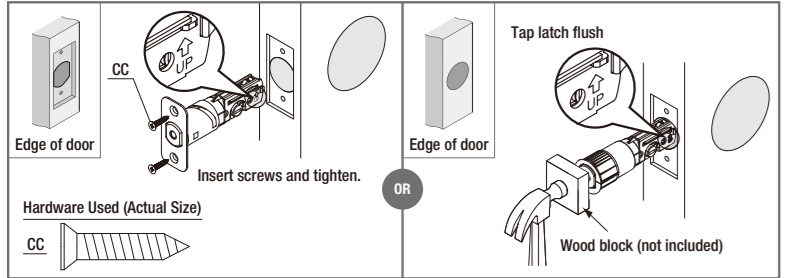


Proceed to next step.

05

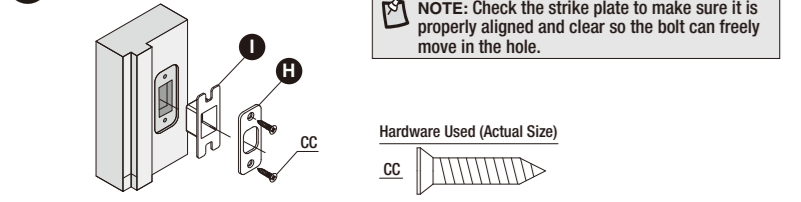
3 Install the latch

⚠ You must use the latch that was provided in the packaging.



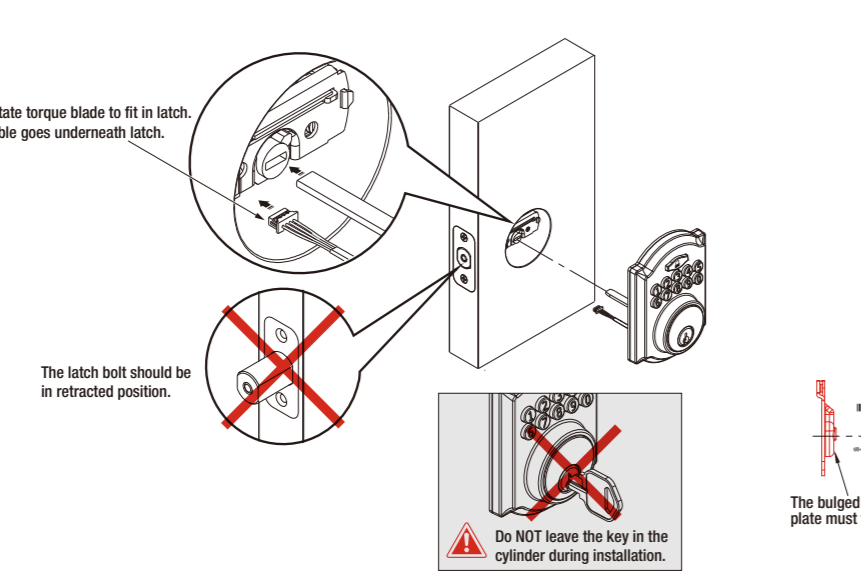
4 Install strike plate in door jamb

NOTE: Check the strike plate to make sure it is properly aligned and clear so the bolt can freely move in the hole.

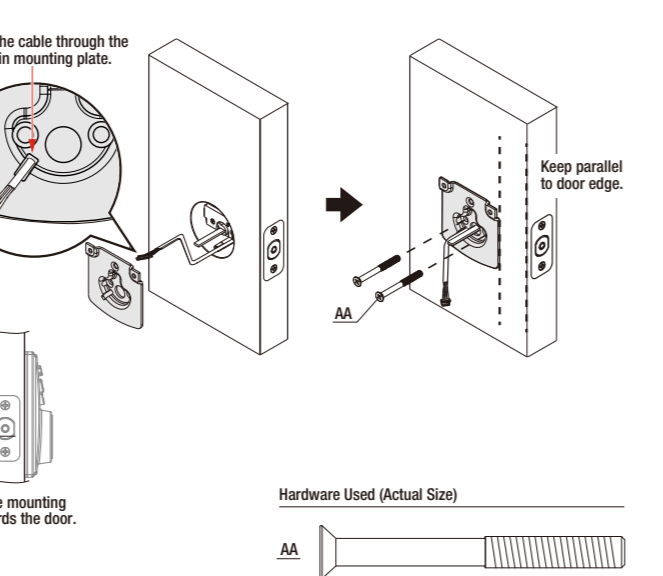


Step 3: Install Electronic Deadbolt

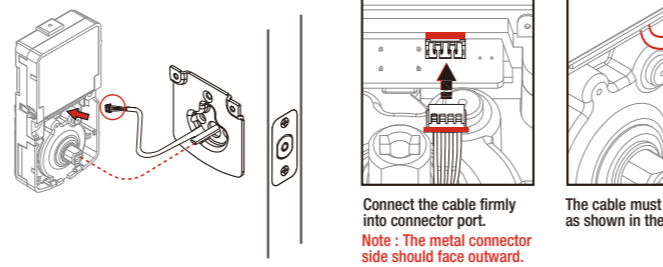
1 INSTALLING THE LOCK ASSEMBLIES



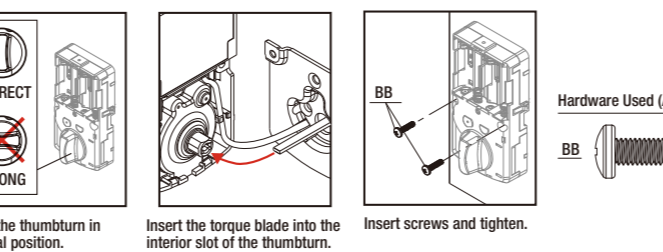
2 Fasten the mounting plate to door



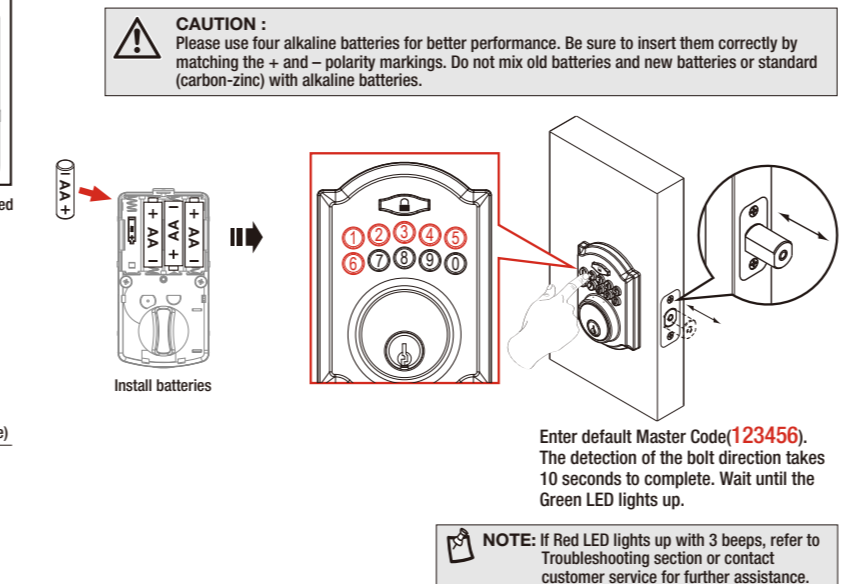
3 Connect the cable firmly into connector port



4 Install interior assembly



5 Install batteries and perform automatic bolt direction determination



Step 4: Test Lock

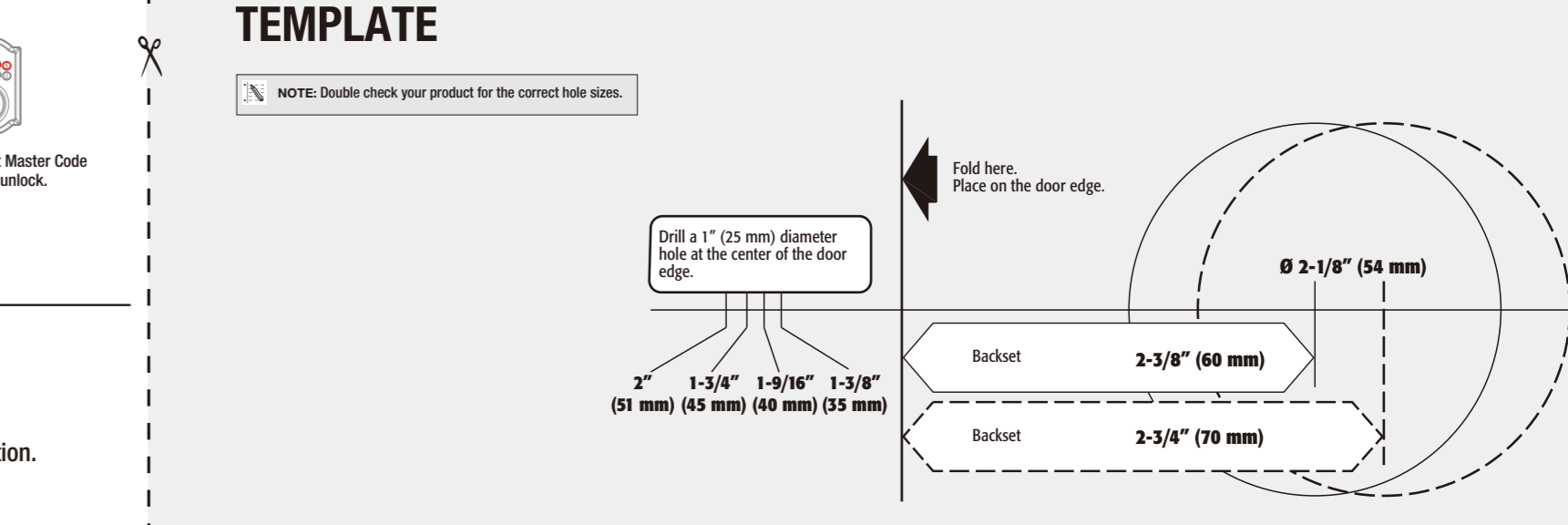
⚠ Test lock with door OPENED to avoid being locked out.



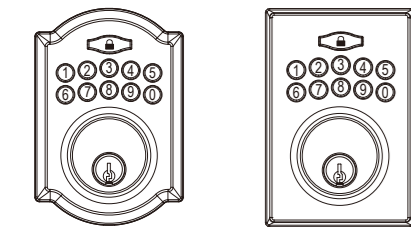
Step 5: Program Lock

⚠ Promptly change the Master Code before operating this lockset.

See the **User Guide** for additional information.



USER GUIDE



SCAN FOR PROGRAMMING



<https://bit.ly/3lpc0Zb>

Questions, problems, missing parts?
Before returning to the store, call Defiant Customer Service

TOLL FREE HELP LINE 1-877-663-5625

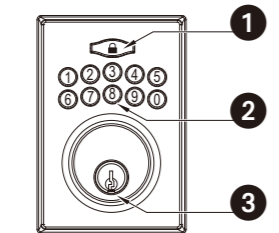
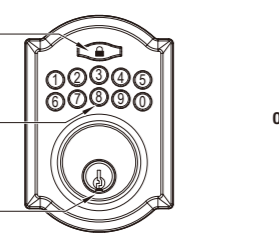
HOMEDEPOT.COM

08:30 a.m.-05:30 p.m., EST, Monday - Friday

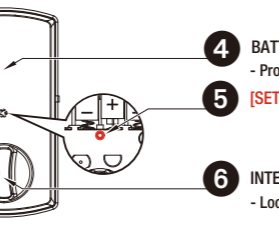
G32-KPDA712
Rev. 20/06-00

PROGRAMMING

OVERVIEW OF FUNCTIONS



OR



- 4** BATTERY COVER
- Protect the batteries from unexpected damage.
- 5** [SET] BUTTON
- 6** INTERIOR THUMBTURN
- Lock or unlock the lockset manually.

- 1** ENTER / LOCK BUTTON
1. Red light: Represents an incorrect entry or the unit is in programming mode.
2. Yellow light: Flashes when the batteries are low in power.
3. Green light: Represents a correct entry.
4. Press to activate or lock the lockset.
- 2** KEYPAD
1. Unlock the lockset by entering a valid User Code.
2. Program the lockset by entering a valid Master Code in Programming Mode.
- 3** MECHANICAL KEYWAY OVERRIDE
1. Lock or unlock the lockset by a valid key.

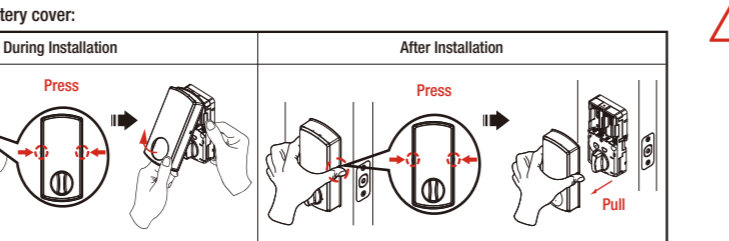


Table Of Contents

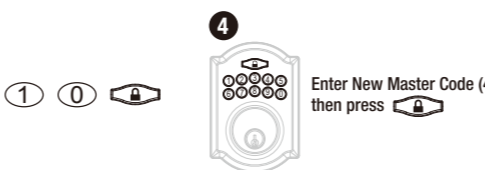
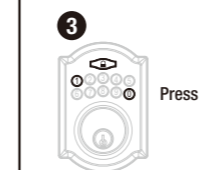
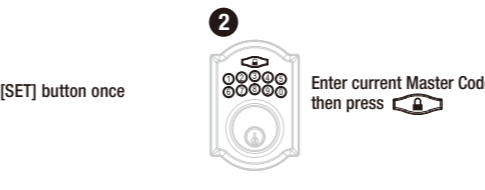
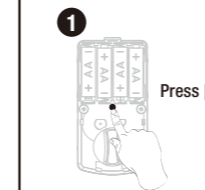
Programming Guide

- Change Master Code..... 01
- Add User Code(s)..... 02
- Delete Individual User or Single-entry Code(s)..... 03
- Delete all User / Single-entry Codes..... 04
- Add Single-entry Code(s)..... 05
- Vacation Mode..... 06
- Enable or Disable Beeper..... 07
- Auto-lock Function..... 08
- Auto-lock Delay Timer..... 09
- Restore To Factory Settings..... 10

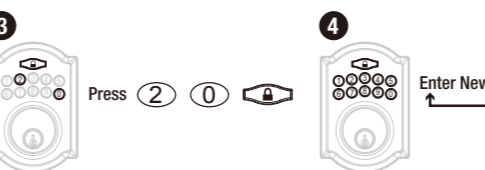
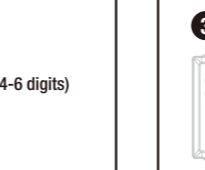
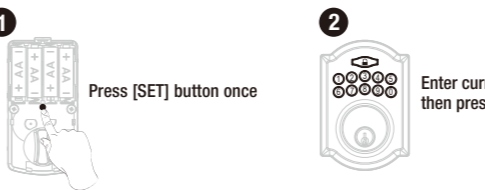
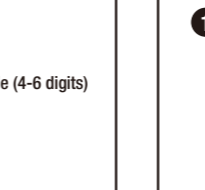
- Programming Mode will automatically time out after 30 seconds of inactivity.**
- If you make a mistake during programming, press the SET BUTTON to leave Programming Mode and start over.**

Change Master Code

- A Master Code can be used to program or unlock the lock.
- The preset Master Code is 123456.
- Please change the Master Code before operating the lock.



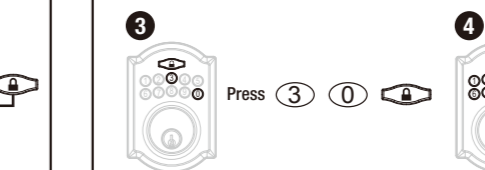
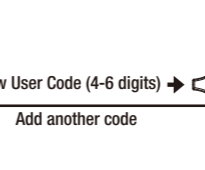
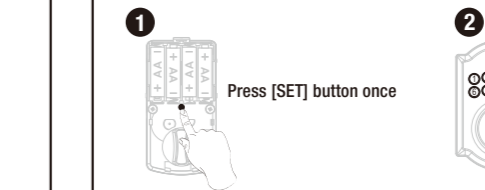
Press **SET BUTTON** to exit programming mode.



Press **SET BUTTON** to exit programming mode.

Add User Code(s)

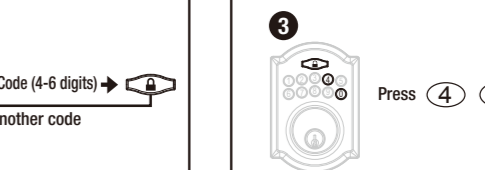
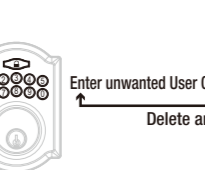
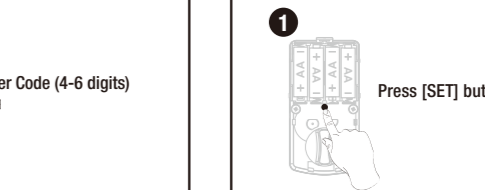
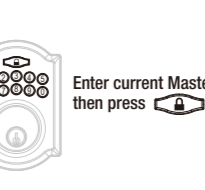
- The unit can store up to 10 customized User Codes (4-6 digits long).



Press **SET BUTTON** to exit programming mode.

Delete Individual User or Single-entry Code(s)

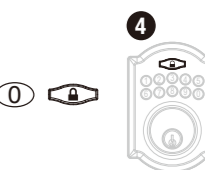
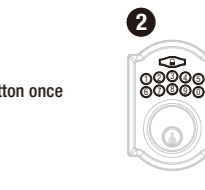
- Delete one or more codes at a time, including User Codes or Single-entry Codes.
- Users/Single-entry codes cannot be retrieved after they are deleted.



Press **SET BUTTON** to exit programming mode.

Delete all User / Single-entry Codes

- Delete ALL User Codes at once.
- Use the existing Master Code (4-6 digits) to unlock the unit after the deletion of User/Single-entry Codes.





Press **SET BUTTON** to exit programming mode.

1 INSTALLATION

QUESTIONS	ANSWERS
A. The latch does not operate correctly after installation.	<ol style="list-style-type: none"> 1. Make sure the backset on the latch is set to the proper length. Installation Guide P.05 2. Make sure prior to installation latch bolt is retracted and key is not in lockset when installing the deadbolt. Installation Guide P.07 3. Please restore to factory setting and enter the default Master Code to set up the lock. User Guide P.10
B. Feel a bump while turning the thumbturn or the key?	<ol style="list-style-type: none"> 1. Please execute lock & unlock function to allow the motor to reposition itself again. 2. The battery is low if the battery indicator light keeps flashing. Please replace with four new batteries. 3. Please restore to factory setting and enter the default Master Code to set up the lock. User Guide P.10
C. Fail to set up the lock.	<ol style="list-style-type: none"> 1. Please make sure the lock is installed correctly. 2. Please install the fresh batteries and make sure the cable is connected correctly. 3. After installation, enter default Master Code 123456 to complete the bolt direction setting.

2 OPERATION

QUESTIONS	ANSWERS
A. Battery indicator keeps flashing.	1. The batteries are getting low, please replace with four new batteries for the best performance (alkaline batteries only).
B. Keypad not responding.	<ol style="list-style-type: none"> 1. Make sure the batteries are installed properly. 2. The batteries are getting low if the battery indicator keeps flashing. please replace with four new batteries for the best performance (alkaline batteries only). 3. Make sure the cable is well-connected to the port, and was not damaged during installation. 4. Please make sure the lock has been set up and complete the bolt direction determination.
C. Master Code can not be changed.	1. Please refer to User Guide P.10 to restore factory setting and reprogram all codes.
D. What should I do if wrong code was entered?	1. Press  button once and continue to input code according to regular procedures.
E. Can not delete all User Codes.	<ol style="list-style-type: none"> 1. Make sure the whole code entering process is completed within 30 seconds, otherwise the unit will time out. 2. Make sure the Master Code has been entered correctly.
F. Can not add a new User Code.	<ol style="list-style-type: none"> 1. Make sure the whole code entering process is completed within 30 seconds, otherwise the unit will time out. 2. Make sure the Master Code has been entered correctly. 3. The new User Code will not be accepted when the capacity is full. Try to delete any or some existing User Codes and then add new one(s) again. A User Code must be at least 4 to 6 digits.
G. "Auto lock" does not function.	<ol style="list-style-type: none"> 1. The batteries are low on power if the battery indicator keeps flashing. Please replace with four new batteries for the best performance (Alkaline batteries only). 2. Please refer to User Guide P.08 to enable the Auto-Lock function.
H. Lockset is not able to unlock / lock by keypad.	<ol style="list-style-type: none"> 1. Make sure you have entered the correct User Code. 2. The battery is low if the battery indicator light keeps flashing. Please replace with four new batteries. 3. Make sure the cable is firmly connected. 4. Check the cable for any damage that may have occurred during installation. 5. Make sure the batteries are properly installed. (Alkaline batteries only) 6. Check the strike plate to make sure it is properly aligned and clear so the bolt can freely move in the hole.
I. Lockset is unable to reset.	<ol style="list-style-type: none"> 1. Please refer to User Guide P.10 to restore factory settings and reprogram all codes. 2. The battery is low if the battery indicator light keeps flashing. Please replace with four new batteries.
J. How to operate the lockset in darkness?	1. Press any button to activate the lockset back light.
K. The red indicator is still on after setting is completed.	<ol style="list-style-type: none"> 1. Check if [SET] button is jammed. 2. Re-install the batteries.
L. The lockset locks when I enter my code and unlocks when I press the  .	<ol style="list-style-type: none"> 1. Un-install the interior and exterior assemblies. Before re-installation, please follow these guidelines: Installation Guide P.07 <ol style="list-style-type: none"> 1) Make sure the bolt is in the retracted position. 2) Do not have any key in the cylinder during installation. 3) Make sure the torque blade is inserted horizontally. 2. Reset the unit to factory settings and reprogram the Master Code and User Codes.
M. I cannot remove my key unless it is in the locked position.	<ol style="list-style-type: none"> 1. Un-install the interior and exterior assemblies. Before re-installation, please follow these guidelines: Installation Guide P.07 <ol style="list-style-type: none"> 1) Make sure the bolt is in the retracted position. 2) Do not have any key in lock cylinder. 3) Make sure the torque blade is inserted horizontally.

If the lock appears to be damaged or does not operate properly, please contact customer service for further assistance.