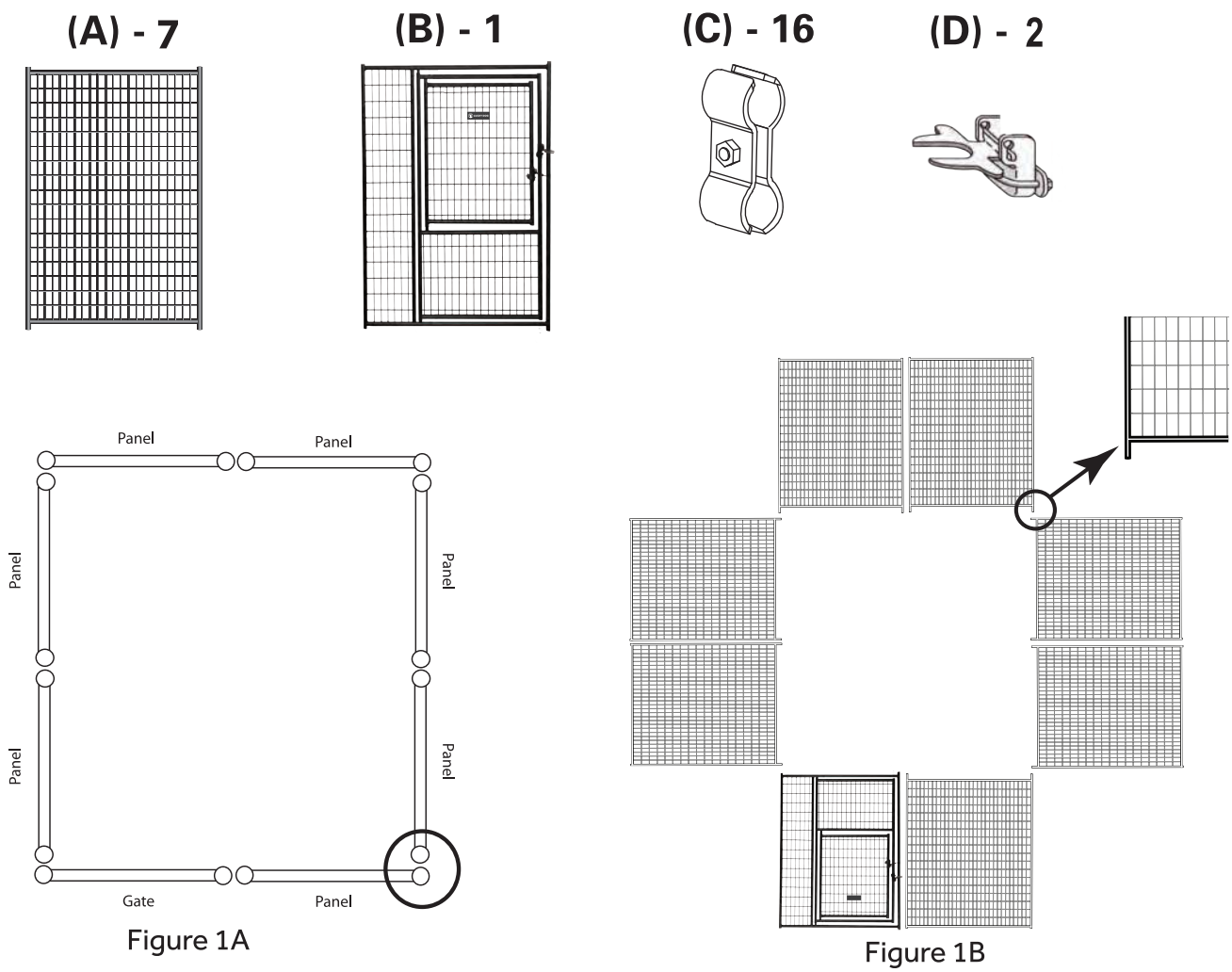


NOTE: Your Parts List may differ than the illustration below depending on your product model. Still refer to Steps 1 - 6 as guidance to build your custom kennel

Part ID	Qty/Description
(A)	(7) Kennel Panels
(B)	(1) Kennel Gate
(C)	(16) Clamps with nut & bolt
(D)	(3) Gate Latch

Tools Needed:
Adjustable Wrench

Recommend 2 people for full installation
Assembly time with 2 people: 45-90 minutes



KENNEL ASSEMBLY

Approximate assembly time with 2 people: 45-90 minutes

Each panel includes 2 panel clamps, and all hardware. Gate panel includes latches and hardware.

Step 1- Site Choice & Ground Preparation

Select a flat, level area for your kennel. Make sure the site is clear of dangerous objects and is protected from sun and other things that may be harmful to your pet.

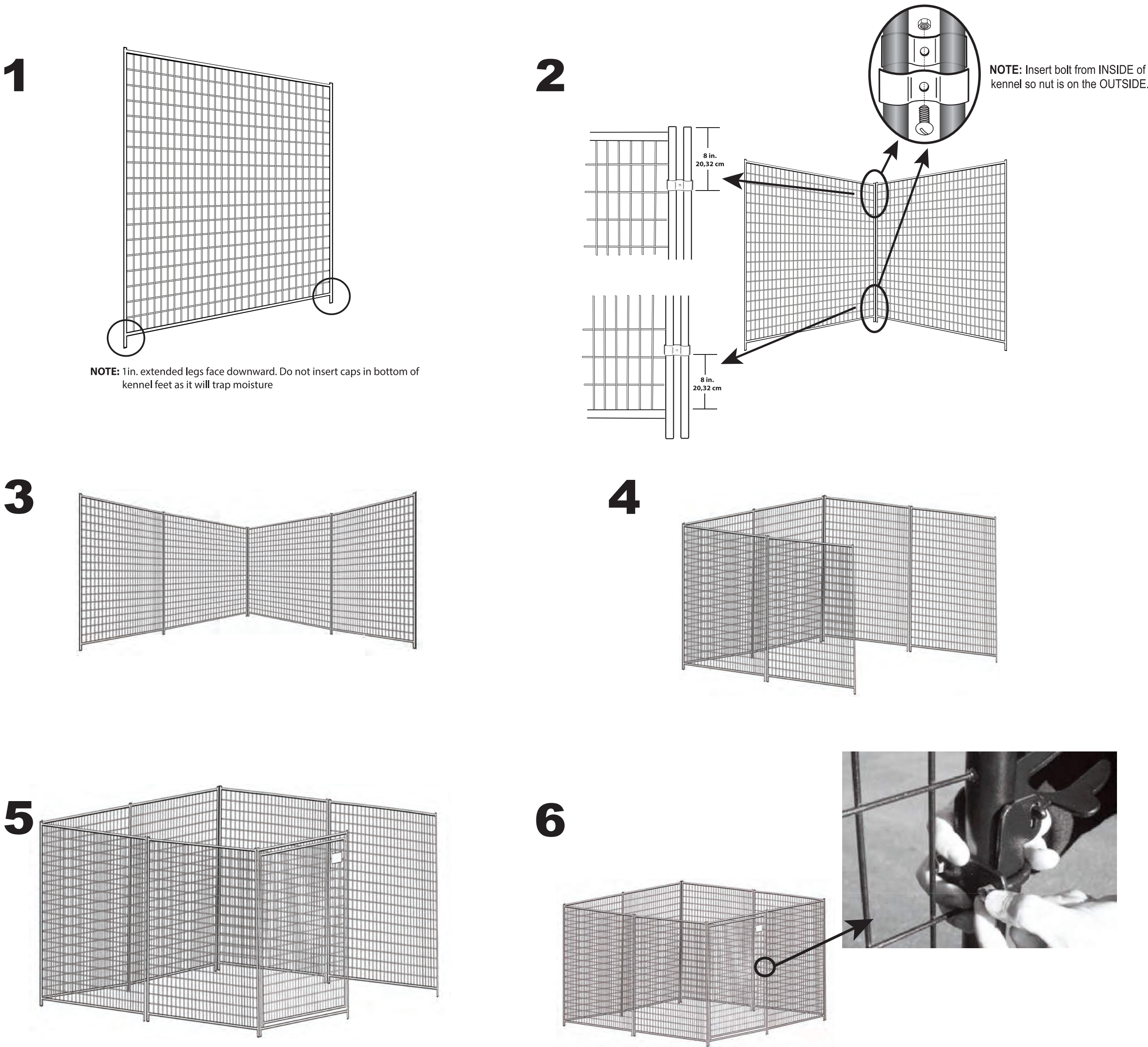
Steps 2 Through 5- Panel Assembly

Starting at the back of your kennel, have someone hold one panel up while you bolt one side panel into place, forming a 90° angle. Add panels, working your way around the kennel. The front and back panels will establish the width of your kennel (see Figure 1A above for correct placement of panels)
Note: Be sure you install bolts from the inside so that the nut is on the outside to avoid injury.

Step 6- Installing Gate/Latch

Install gate with Lucky Dog® Logo facing outward. Bolt gate into place and install latches, using 1 latch for the main door, and 1 latch for the upper access door.

Warning: Roof is non-load bearing
Remove Canopy cover from frame before wind or snow

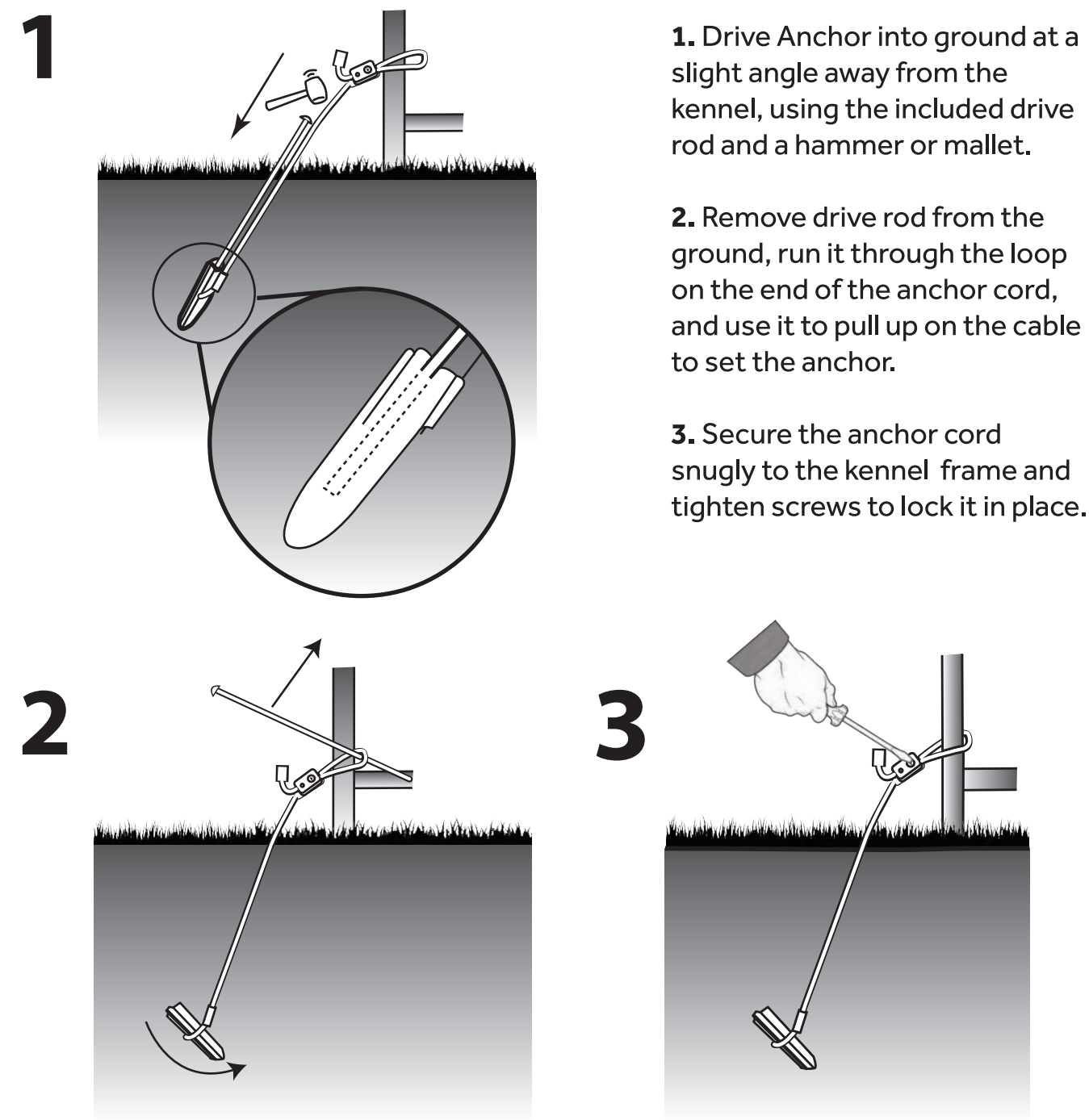


Anchoring System Installation



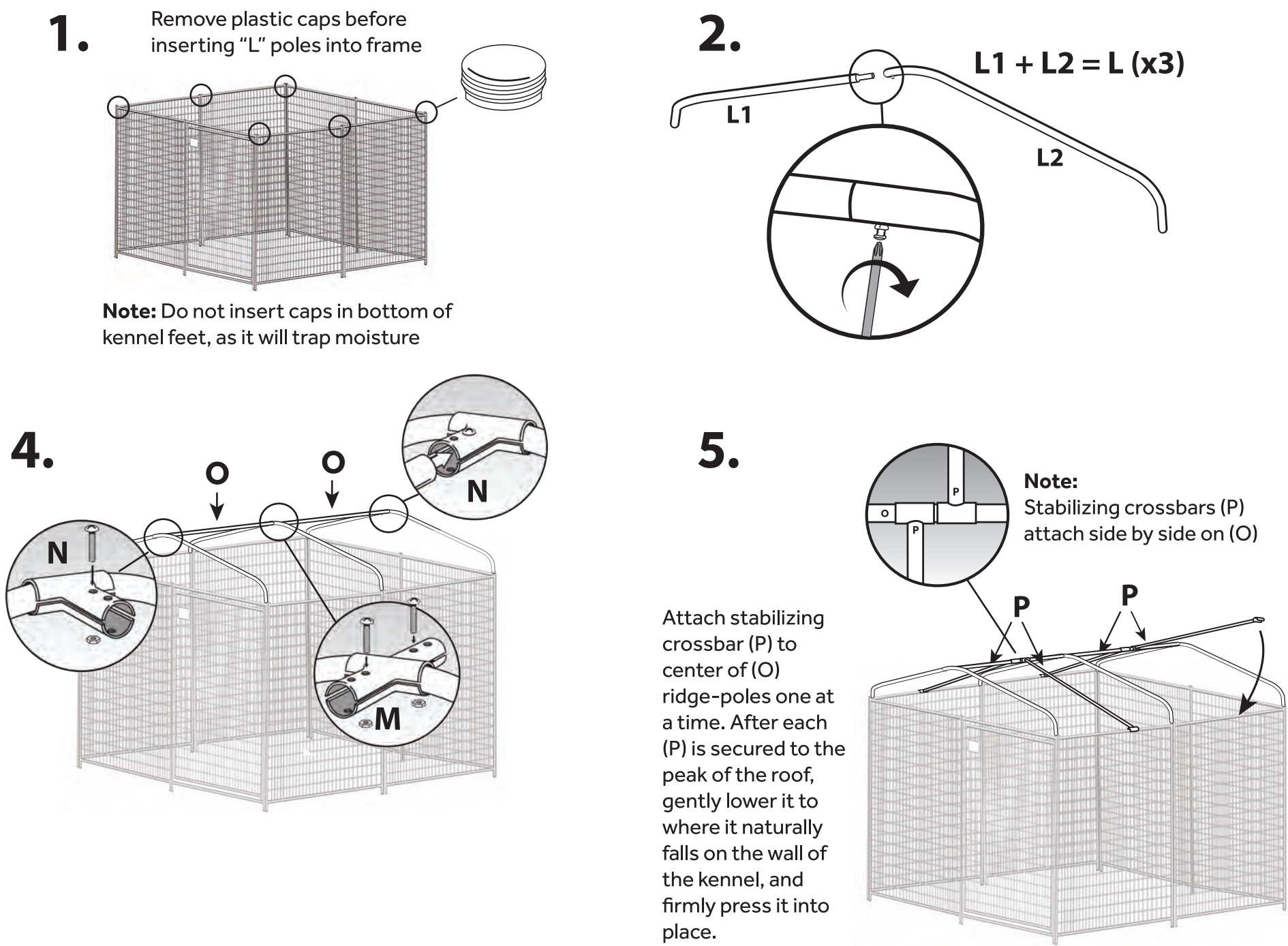
NOTE: Refer to these steps if your custom kennel includes Anchoring System Kit

Know what's below.
Call before you dig.

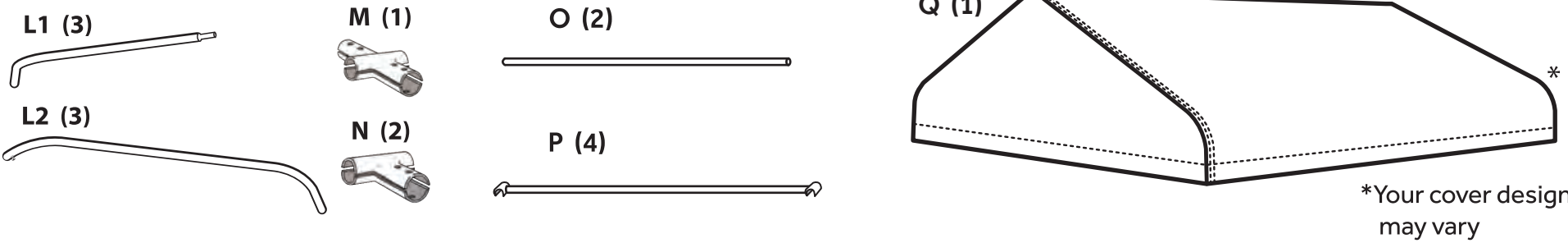


NOTE: Refer to these steps if your custom kennel includes the Kennel Cover and Roof System Kit

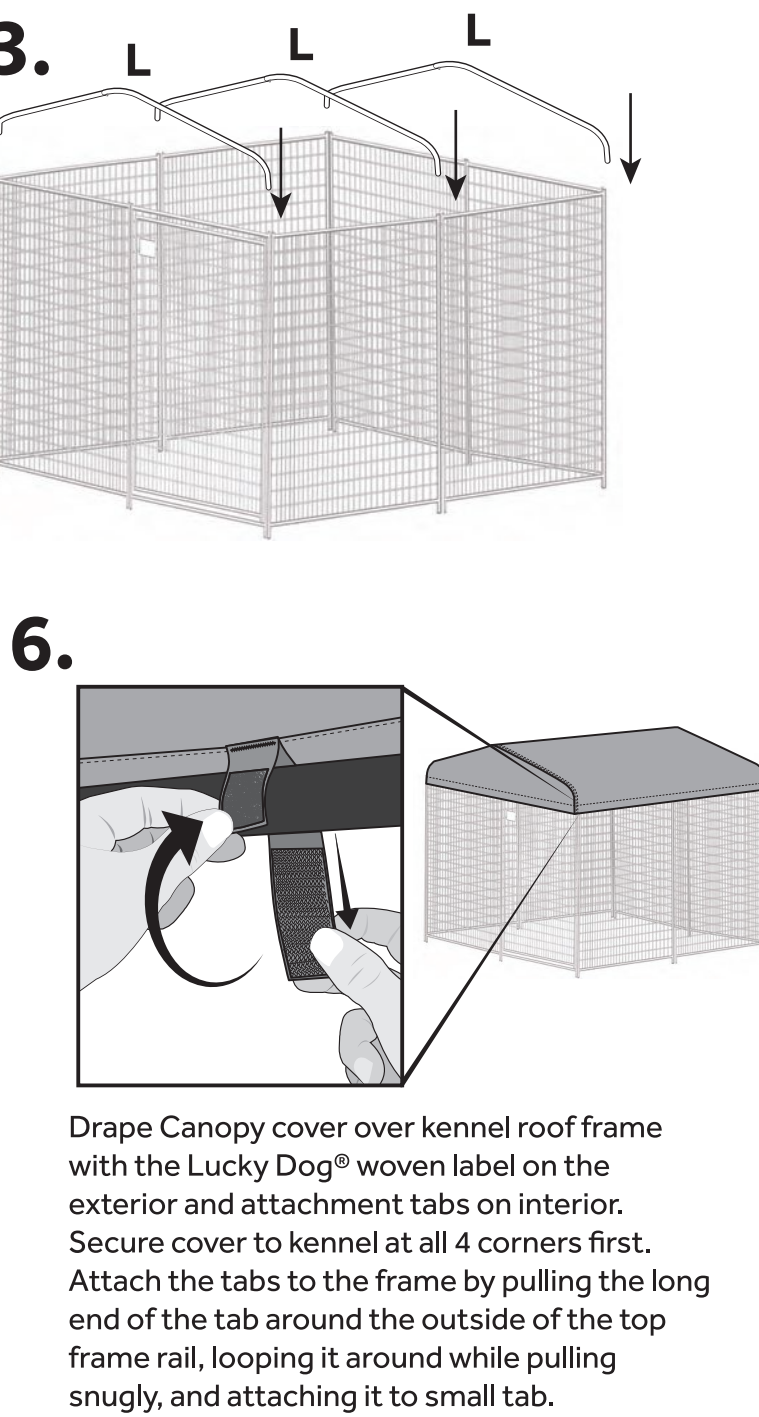
Tools needed:
Phillips screwdriver
Adjustable Wrench



10x10 Kennel Cover & Roof System Assembly



*Your cover design may vary



LUCKY DOG®

KPRM10- STAY series Kennels
KPRM8- STAY series Kennels

LIMITED EXPRESS WARRANTY

Jewett Cameron Companies warrants your outdoor kennel to be free of defects in workmanship and further warrants that under normal use will be free of problems for 2 full years from date of purchase by original purchaser.
Jewett Cameron Company WILL NOT HAVE OTHER OR GREATER LIABILITY FOR DEFECTS, NOR WILL Jewett Cameron Company HAVE ANY LIABILITIES FOR INCIDENTAL OR CONSEQUENTIAL DAMAGES.
Some states do not allow the exclusion or limitation of incidental or consequential damages, so the above limitation or exclusion may not apply to you. If you discover a defect in the kennel during the warranty period and wish to obtain replacement parts or have questions, send notice of claim to:

Jewett Cameron Company
PO Box 1010
North Plains, Oregon 97133

Include your return address, a copy of the original invoice or proof of purchase, plus a description of claimed defect. All implied warranties of merchantability and fitness for particular purpose are limited to a duration of two (2) years from date of purchase. Some states do not allow limitations on how long an implied warranty may last, so the above limitations may not apply to you. This warranty gives you specific legal rights and you may also have other rights, which may vary from state to state.

Designed in Oregon by:
Jewett Cameron Co.
CUSTOMER CARE & SERVICE:
1-800-955-2879
www.jewettcameron.com
©2017-2021 Jewett Cameron Co.
32275 NW Hillcrest, PO Box 1010
North Plains, OR 97133
MADE IN CHINA



WARNING: This product can expose you to chemicals including Lead which is known to the State of California to cause cancer and birth defects or other reproductive harm. For more information go to: www.P65Warnings.ca.gov

Rev. 2021-04-21