

PERFORMANCE®



The new degree of comfort.®

The PERFORMANCE® atmospheric gas water heaters feature a diagnostic gas valve and a six-year warranty

Efficiency

- .58 - .66 UEF

Performance

- FHR: 55 - 97 gallons
- Recovery: Up to 51 GPH at a 90° F rise, depending on model

Diagnostic Valve

- Self powered diagnostic gas control valve for improved monitoring and service



Low Emissions

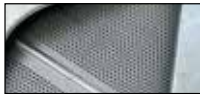
- Eco-friendly burner, low NOx design
- Meets 40 ng/J NOx requirements

Maintenance Free Burner System

- Exclusive air/fuel shut-off device
- Maintenance free – no filter to clean
- Disables the heater in the presence of flammable vapor accumulation



Combustion Shut-off System



Flame Arrester Plate



Maintenance Free

Longer Life

- Premium grade anode rod provides long-lasting tank protection

Plus...

- Easy to light – no matches required
- Temperature and pressure relief valve included
- Factory installed temperature and pressure relief valve on select models
- Low lead compliant
- Standard replacement parts

Warranty

- 6-Year limited warranty for tank and parts, 1-year full in-home labor warranty*

*See written warranty for complete details

Units meet or exceed ANSI requirements and have been tested according to D.O.E. procedures. Units meet or exceed the energy efficiency requirements of NAECA, ASHRAE standard 90, ICC Code and all state energy efficiency performance criteria.



PERFORMANCE
Atmospheric
29, 30, 40, 50 and 55-Gallon
Capacities
Up to 50,000 Btu/h



LEED Point = 1

See specifications chart on back.



The new degree of comfort.

PERFORMANCE[®] Atmospheric Gas Specifications

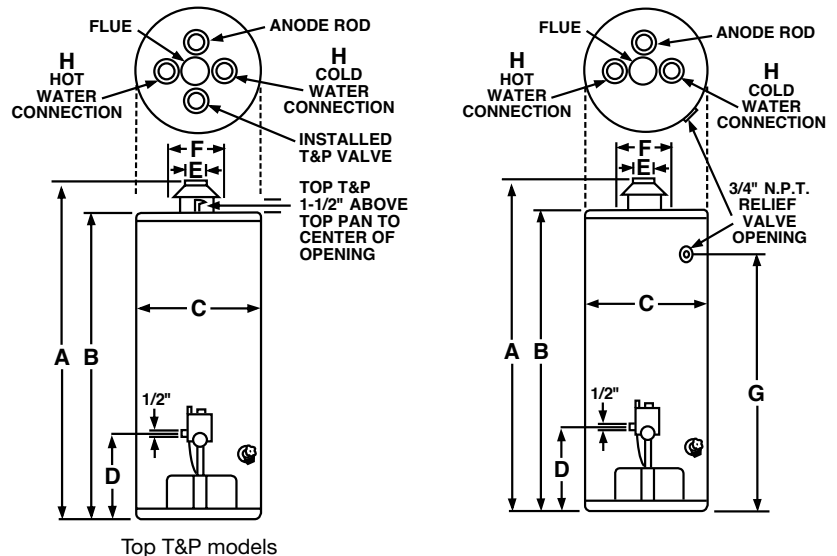
Fuel Type	Description	Nominal Gallon Capacity	Rated Gallon Capacity	Model Number	Gas Input in Thous. Btu/h	Recovery in G.P.H. 90° F Rise	First Hour Rating (Gallons)	Ht. to Vent A	Tank Height B	Diam. C	Ht. to Gas Conn. D	Vent Size E	Water Conn. Center F	Ht. to Side T&P Valve G	Water Conn. Size H	Ship Weight (LBS)	Uniform Energy Factor (UEF)	
Performance - Self Powered Diagnostic Control - High Demand																		
Natural Gas	Tall	55	55	XG55T06EC50U0 [†]	50	51	97	59-1/8	55-7/8	23-3/4	14-1/4	4	8	48-3/4	3/4	175	0.62	
Liquid Propane	Tall	55	55	XP55T06EC45U0 [†]	45	46	97	59-1/8	55-7/8	23-3/4	14-1/4	4	8	48-3/4	3/4	175	0.62	
Performance - Self Powered Diagnostic Control - High Efficiency																		
Natural Gas	Tall	50	48	XG50T06HE40U0 [†]	40	40.4	75	62-3/4	59-1/4	21-1/2	14-1/2	3 or 4	8	52-1/2	3/4	165	0.64	
Natural Gas	Tall	50	48	XG50T06TH40U0 [*]	40	40.4	75	62-3/4	59-1/4	21-1/2	14-1/2	3 or 4	8	52-1/2	3/4	165	0.64	
Natural Gas	Tall	40	38	XG40T06TH40U0 [*]	40	40.4	84	63-1/4	60	19-1/2	14	3 or 4	8	53-1/2	3/4	135	0.66	
Natural Gas	Short	40	39	XG40S06HE38U0 [†]	38	38.4	67	53-3/4	50-1/4	21-1/2	14-1/2	3	8	44	3/4	125	0.59	
Liquid Propane	Tall	50	48	XP50T06HE36U0 [†]	36	36.4	75	62-3/4	59-1/4	21-1/2	14-1/2	3 or 4	8	52-1/2	3/4	165	0.64	
Liquid Propane	Tall	40	38	XP40T06HE36U0 [†]	36	36.3	84	63-1/4	60	19-1/2	14	3 or 4	8	53-1/2	3/4	135	0.66	
Liquid Propane	Short	40	39	XP40S06HE36U0 [†]	36	36.4	67	53-3/4	50-1/4	21-1/2	14-1/2	3	8	44	3/4	125	0.59	
Performance - Self Powered Diagnostic Control																		
Natural Gas	Tall	50	48	XG50T06EC38U1	38	38.4	85	61-1/4	58-1/4	20-1/2	14-1/4	3 or 4	8	51-3/8	3/4	140	0.63	
Natural Gas	Tall	50	48	XG50T06TC38U1 [*]	38	38.4	85	61-1/4	58-1/4	20-1/2	14-1/4	3 or 4	8	51-3/8	3/4	140	0.63	
Natural Gas	Short	50	48	XG50S06EC40U1	40	40.4	86	54-1/4	51	23-3/4	14-1/4	3 or 4	8	44	3/4	186	0.64	
Natural Gas	Tall	40	38	XG40T06EC36U1	36	36.4	68	61-1/2	58-1/2	19	14-1/4	3 or 4	8	52-1/4	3/4	127	0.58	
Natural Gas	Tall	40	38	XG40T06TC36U1 [*]	36	36.4	68	61-1/2	58-1/2	19	14-1/4	3 or 4	8	52-1/4	3/4	127	0.58	
Natural Gas	Short	40	39	XG40S06EC34U0	34	34.3	64	52-1/8	49-1/4	21	14-1/4	3 or 4	8	42-3/4	3/4	120	0.58	
Natural Gas	Short	30	29	XG30S06EC30U1	30	30.3	55	49-7/8	46-1/4	19-3/4	14-1/4	3 or 4	8	40-3/8	3/4	112	0.60	
Natural Gas	Tall	29	28	XG29T06EC32U1	32	32.3	62	59-3/4	56-1/2	16-1/2	14-1/4	3 or 4	8	50-3/4	3/4	110	0.60	
Liquid Propane	Tall	50	48	XP50T06EC36U1	36	36.4	85	61-1/4	58-1/4	20-1/2	14-1/4	3 or 4	8	51-3/8	3/4	125	0.63	
Liquid Propane	Tall	40	38	XP40T06EC32U1	32	32.3	67	61-1/2	58-1/2	18-1/2	14-1/4	3 or 4	8	52-1/4	3/4	125	0.61	
Liquid Propane	Tall	29	28	XP29T06EC30U1	30	30.3	62	59-3/4	56-1/2	16-1/2	14-1/4	3 or 4	8	50-3/4	3/4	110	0.60	

Uniform Energy Factor and rated gallon capacity based on Department of Energy (DOE) requirements.

[†]Models with installed top T&P.



1LEED Point = 1



In keeping with its policy of continuous progress and product improvement, Rheem reserves the right to make changes without notice.

Rheem Water Heating • 1115 Northmeadow Parkway, Suite 100
Roswell, Georgia 30076 • www.rheem.com