

Garage Instant Screen™ Instructions

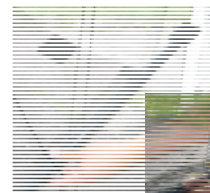
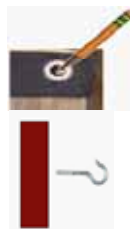
Attach with Velcro™

1. Peel off backing from Velcro™ strip
2. Place Velcro™ strips evenly spaced over the top of the opening.
3. Attach Instant Screen™
4. Place rods in bottom of the screen through the premade slots with butterfly ends on the outside and insert two rods together.



Attach with Screw Hooks

1. With a pencil through the eye holes in the Instant Screen™, mark spacing on the opening you will be attaching the hooks.
2. Screw the hooks in your marking, which should be evenly spaced across the opening. If screwing into sheetrock, use the sheetrock anchors provided.
3. Attach the Instant Screen™.
4. Place rods in bottom of the screen through the premade slots with butterfly ends on the outside and insert two rods together.



Attach the Optional Roll-up Accessory

1. To attach the roll-up accessory, you must first install the screen via the Screw Hooks. You can install additional hooks for the strings only adjacent to screen hooks to create less tension.
2. Strings are in four sizes. Use the longest string for the farthest point from the pull-up point –the shortest strings for the closest to the pull-up point.
3. Lace the strings thru the hook, down the front of the screen, underneath the screen, up the back of the screen, and then through the hook.
4. Lace all four strings thru the hooks on top to the end hook and let the strings hang down.
5. Test the roll-up by pulling on the strings.
6. Attach the tie-off clip with screws.
7. Tie strings together and loop over the hook to tie-off clip.

