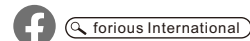


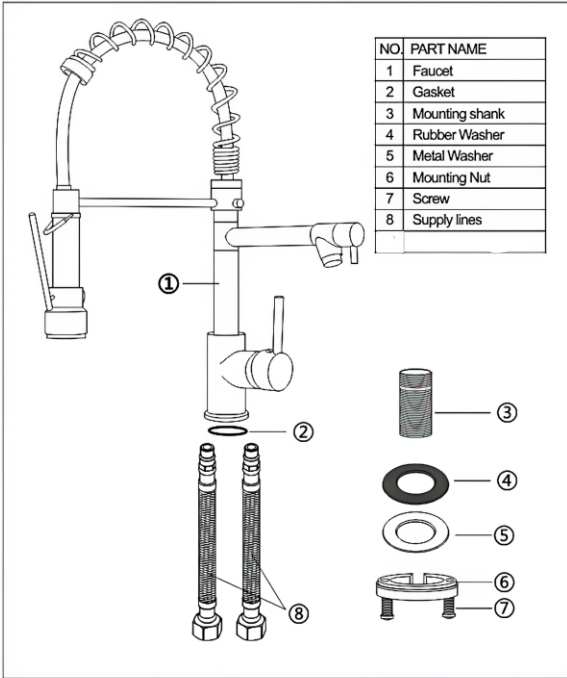
FORIOUS

Kitchen Faucet
Installation Instruction

Contact Us



- Thank you for purchasing our kitchen faucet
- Please read this manual carefully before you install it
- Please keep this maunal properly for the reference in the future



01

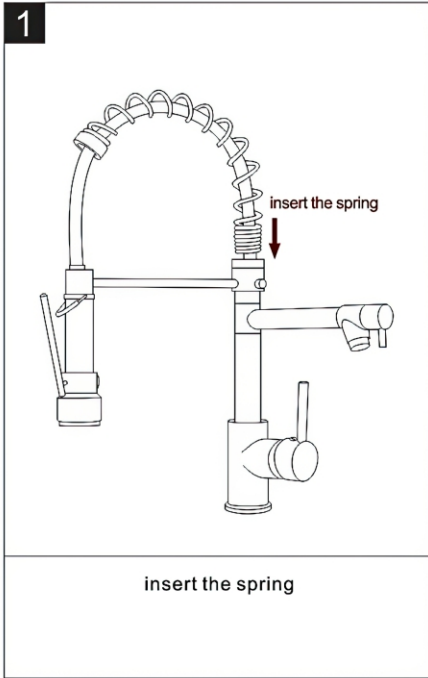
Model CFLT-2020

Read all instructions prior to installation.

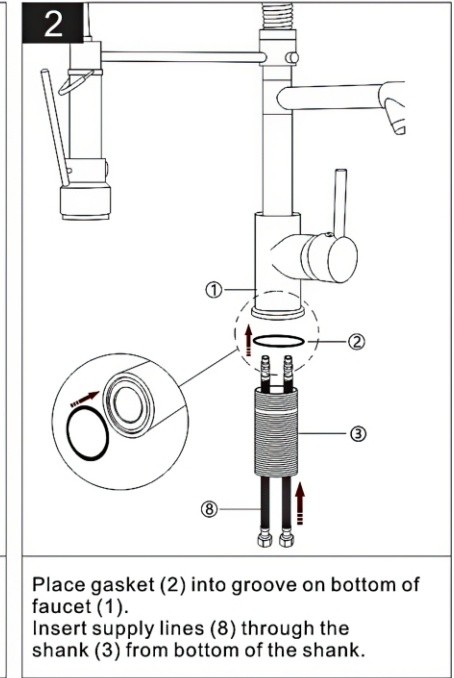
CAUTION

Failure to read these instructions prior to installation may result in personal injury, property damage, or product failure. Manufacturer assumes no responsibility for product failure due to improper installation.

You may need:

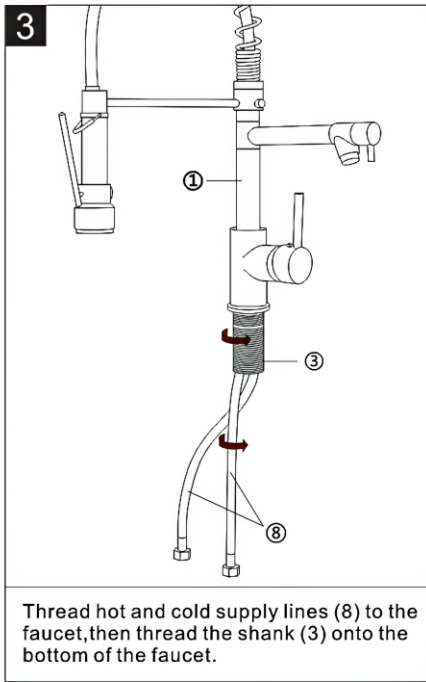


insert the spring



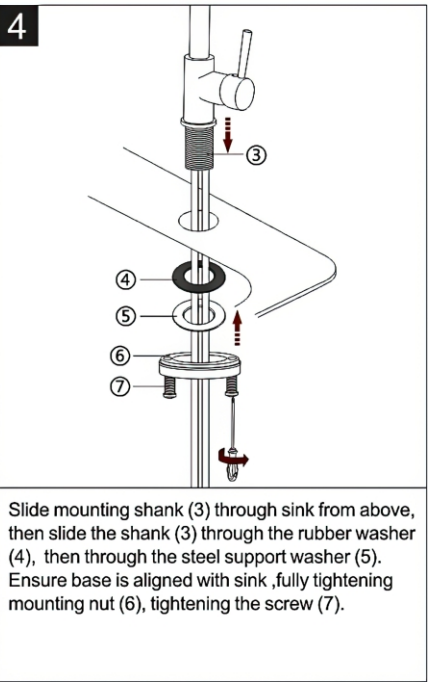
Place gasket (2) into groove on bottom of faucet (1). Insert supply lines (8) through the shank (3) from bottom of the shank.

02

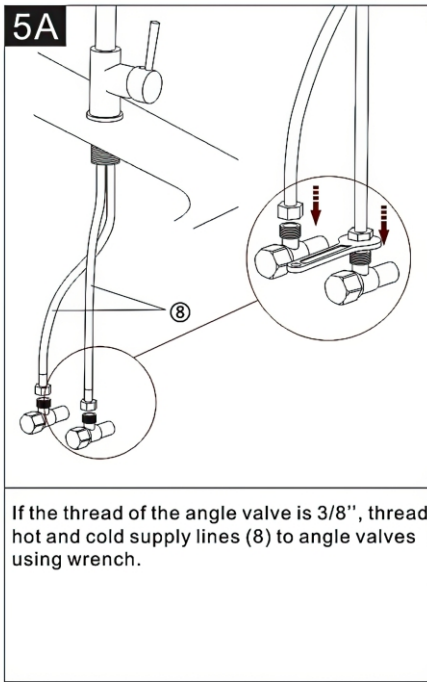


Thread hot and cold supply lines (8) to the faucet, then thread the shank (3) onto the bottom of the faucet.

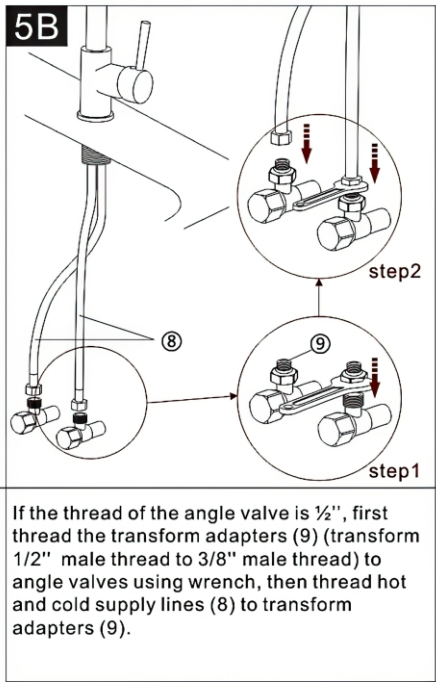
03



Slide mounting shank (3) through sink from above, then slide the shank (3) through the rubber washer (4), then through the steel support washer (5). Ensure base is aligned with sink, fully tightening mounting nut (6), tightening the screw (7).

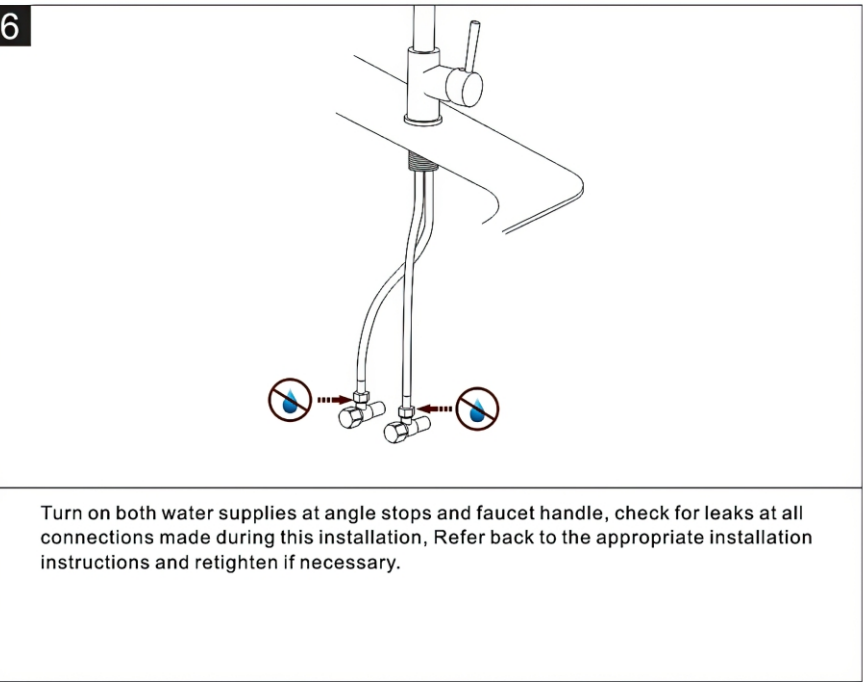


If the thread of the angle valve is 3/8", thread hot and cold supply lines (8) to angle valves using wrench.



If the thread of the angle valve is 1/2", first thread the transform adapters (9) (transform 1/2" male thread to 3/8" male thread) to angle valves using wrench, then thread hot and cold supply lines (8) to transform adapters (9).

04



Turn on both water supplies at angle stops and faucet handle, check for leaks at all connections made during this installation. Refer back to the appropriate installation instructions and retighten if necessary.

05