

DOUBLE DRAPERY ROD INSTALLATION GUIDE

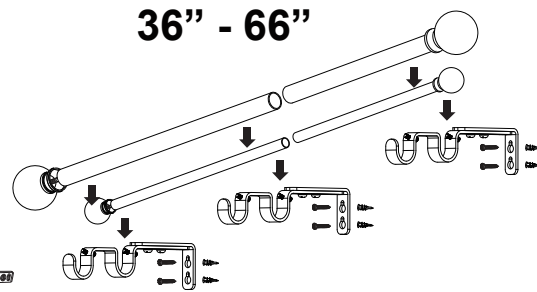
DOUBLE DRAPERY ROD INSTALLATION GUIDE

Note:

Finial shown is for illustration purposes only. It may not represent the style of finial purchased. For larger width windows, two persons may be required for easier leveling.

Tools needed:

Tape Measure, Pencil, Drill & Bit Set, Philips head Screwdriver, Level

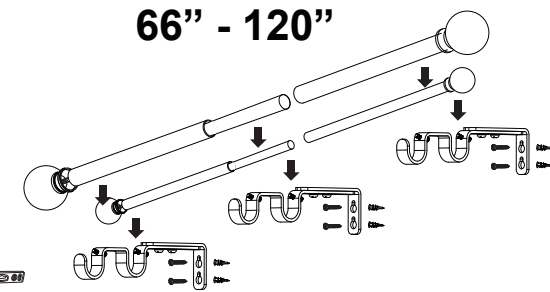


Note:

Finial shown is for illustration purposes only. It may not represent the style of finial purchased. For larger width windows, two persons may be required for easier leveling.

Tools needed:

Tape Measure, Pencil, Drill & Bit Set, Philips head Screwdriver, Level



BRACKET INSTALLATION

STEP 1.

Place brackets against wall or ceiling at desired locations and mark screw holes. Use a tape measure and level to make sure marked screw holes are horizontal to each other.

STEP 2A. (FOR MOUNTING TO DRYWALL, CEILING OR PANELING)

Pre-drill two pilot holes for each bracket (1/4" drill bit). Screw anchors into the pilot holes (do not use hammer or tap-in), and then fasten screws into wall anchors.

STEP 2B. (FOR MOUNTING TO WOOD OR STUDS)

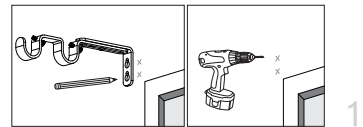
Pre-drill two pilot holes for each bracket (1/8" drill bit) and insert the screws.

STEP 3.

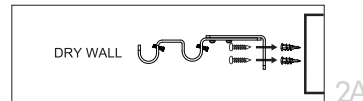
Insert the brackets through the screws and gently pull down to tighten the screw against the narrower portion of the bracket key hole.

STEP 4.

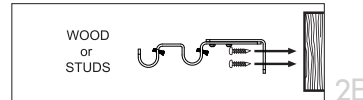
Determine projection of brackets. Loosen projection screw, slide bracket to desire position and tighten projection screw. Repeat for each bracket.



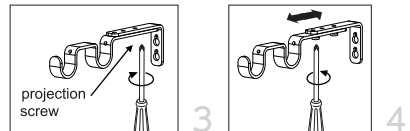
1



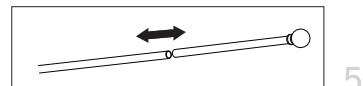
2A



2B



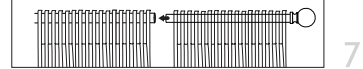
3



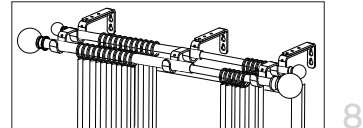
4



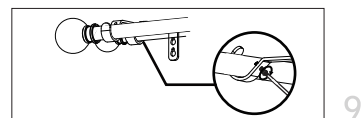
5



6



7



8



9

ROD INSTALLATION

STEP 5.

Extend the smaller diameter telescopic sheer rod until they separate.

STEP 6.

Feed half of the sheer panels (not included) onto one sheer rod and the other half of the sheer panels (not included) onto the second sheer rod.

STEP 7.

Connect the two sheer rods to make it a telescopic sheer rod.

STEP 8.

Place telescopic sheer rod onto the rear rod holder of all three brackets.

FINAL ADJUSTMENT

STEP 9.

Secure each rod by tightening screws provided.

BRACKET INSTALLATION

STEP 1.

Place brackets against wall or ceiling at desired locations and mark screw holes. Use a tape measure and level to make sure marked screw holes are horizontal to each other.

STEP 2A. (FOR MOUNTING TO DRYWALL, CEILING OR PANELING)

Pre-drill two pilot holes for each bracket (1/4" drill bit). Screw anchors into the pilot holes (do not use hammer or tap-in), and then fasten screws into wall anchors.

STEP 2B. (FOR MOUNTING TO WOOD OR STUDS)

Pre-drill two pilot holes for each bracket (1/8" drill bit) and insert the screws.

STEP 3.

Insert the brackets through the screws and gently pull down to tighten the screw against the narrower portion of the bracket key hole.

STEP 4.

Determine projection of brackets. Loosen projection screw, slide bracket to desire position and tighten projection screw. Repeat for each bracket.

ROD INSTALLATION

STEP 5.

Detach finial from inner rod.

STEP 6.

Attach the drapery treatment onto the outer rod that is connected with an inner rod. Place the rod onto the middle and right brackets.

STEP 7.

Attach the remaining finial and drapery treatment onto the other outer rod. Place the rod onto the left bracket.

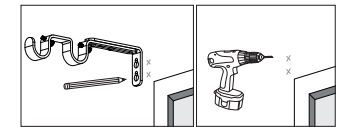
STEP 8.

Slide the left outer rod over the inner rod.

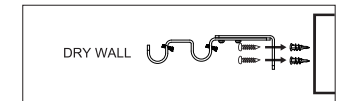
FINAL ADJUSTMENT

STEP 9.

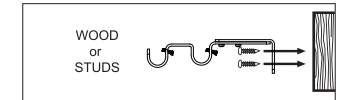
Secure each rod by tightening screws provided.



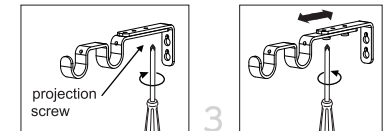
1



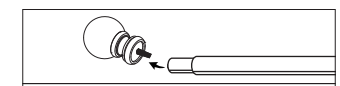
2A



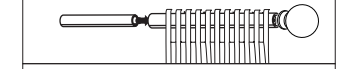
2B



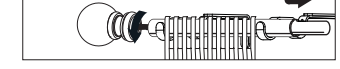
3



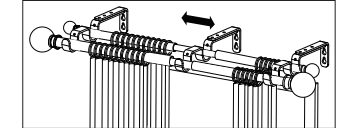
4



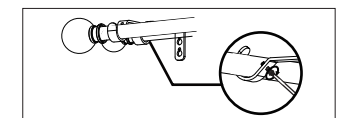
5



6



7



8



9